

### Braking Efficiency Can Be Improved By Equalizing Force At Each Wheel

"Traffic safety demands braking efficiency," he continued. "In ability sufficient to the projective fact," he continued. Maximum acceleration cannot be used while mobile," says G. B. Allen, chief driving instructor in traffic when it is most

needed) if the deceleration is not in direct proportion. Acceleration gains have been made by the use of high compression engines by the employment of eight-cylinder engines furnishing a great amount of torque at low speeds and also by means of improved cam shapes, manifolding

and combustion chamber design. Improvements in this direction are still going on and with the tendency throughout the industry towards the use of larger engines furnishing greater power-weight ratio, it is likely that even the present accelerative rate will be exceeded.

"Obviously greater attention must be given to braking efficiency. Four-wheel brakes have afforded a tremendous improvement over the old two-wheel types. But now that we have four-wheel brakes, the stopping effort is being applied to all the surface that it can be applied to. There is only one way that a further gain can be made and that is to make certain that each of the four wheels is doing its full share of the work needed to bring the car to a stop.

"Engineers have proven that maximum retarding force is being exerted when the wheel is just short of being locked. Naturally it is necessary that equal braking effort be applied to all four wheels, and this was the aim of engineers in designing the braking system for Dodge Brothers cars.

"Brakes on the Dodge Brothers Eight-in-Line are of the self-equalizing, internal hydraulic type. Every resource at the disposal of a vast engineering organization has been concentrated on the matter of equalization because without 100 per cent equalization there cannot be 100 per cent efficiency, simply because all brakes cannot exert their maximum power simultaneously.

"Connected with the brake pedal is a piston working in a master cylinder. Leading from this master cylinder to a cylinder in each of the brake drums are copper tubes and reinforced hose connections. In each brake drum cylinder are two pistons which press against the upper ends of the brake shoes. All cylinders and lines are full of liquid, all air having been expelled in the filling of the system.

"When the foot pedal is depressed, the piston in the master cylinder exerts a pressure upon the liquid in the lines sufficient to force out the piston in each of the brake drum cylinders until the brake shoe facings come in contact with the inside of the drums.

"There can be no braking pressure applied to any one drum until all the facings are in contact with their drums. Thus when the brakes actually apply the force that brings the car to a stop, it is automatically equal on each wheel. This is governed by the physical law that pressure exerted on each column of fluid is expanded equally in all directions." Since equalization is the pre-eminent factor in putting deceleration on a par with acceleration, Dodge Brothers are particularly fortunate in that a fundamental law of physics accomplishes this as surely, positively and dependably as the earth turns on its axis.

1929 line of seat covers are offered in handsome colors and fabrics that anticipate every automotive use, both in price and design. "No matter what may be the make or model, appearance of any car can be improved and summer driving can be made more comfortable by the addition of seat covers."

### Everybody Home For Census Count

OSHING, N. Y., April 18.—(AP)—Enumerator John Sheehy Jr. found everybody in his district home today when he started out to take the census.

He listed 2,178 persons in a comparatively short time and only with slight difficulty. He found one conscientious objector who refused to be counted in the census without his beard, which had been shaved off.

Sheehy's district was Sing Sing prison. "Look and see how much we've got, will you?" "It points to 2, but I don't know whether it means half full or half empty."

RIO DE JANEIRO—Cardinal Do Arcoveade, archbishop of Rio De Janeiro, dies.

### MORE TOURISTS THAN CALIFORNIA

(Continued from Page One)

in Oregon" aptly expresses Oregon's tourist problem.

Total non-resident permits issued for year 1929:

State	Oregon	Calif.
Alabama	51	182
Alaska	41	48
Arizona	767	5,100
Arkansas	106	530
Australia	1	1
Bahia	1	1
Belgium	1	1
Brazil	1	1
Canada	1,828	800
Canal Zone	11	1
China	1	4
Colombia	1,262	6,000
Connecticut	65	350
Cuba	1	4
Delaware	10	43
District of Columbia	79	344
England	3	8
Florida	158	530
France	2	8
Georgia	43	102
Germany	1	4
Greece	1	4
Hawaii	100	248
Idaho	4,884	2,650
Illinois	1,027	4,550
Indiana	411	2,100
Iowa	658	2,550
Italy	1	1
Japan	1	1
Jawa	1	1
Kansas	177	2,420
Kentucky	48	240
Louisiana	76	311
Maine	20	151
Maryland	44	232
Massachusetts	170	700
Mexico	1	50
Michigan	717	3,580
Minnesota	776	2,100
Mississippi	26	96
Missouri	525	2,240
Montana	1,207	1,340
Nebraska	741	2,140
Nevada	524	2,150
New Hampshire	15	162
New Jersey	157	540
New Mexico	170	890
New York	595	3,240
New Zealand	1	1
North Carolina	35	155
North Dakota	324	630
Nova Scotia	1	2
Ohio	684	3,400
Oklahoma	520	2,040
Oregon	102,008	50,682
Panama	1	18
Pennsylvania	414	1,800
Philippine Is.	14	14
Rhode Island	74	185
South America	1	2
So. Carolina	20	52
South Dakota	328	510
Tennessee	73	372
Texas	759	4,380
Utah	895	2,760
Vermont	13	71
Virginia	67	224
Washington	18,551	11,312
West India	1	1
West Virginia	53	215
Wisconsin	476	1,280
Wyoming	402	908
California	61,104	1,104
Totals	102,008	50,682

### SEAT COVERS ADD COLOR TO AUTOMOBILES

"In the spring, the auto's fancy" accessories and seat covers are very much in demand, according to C. D. Hask, local manager of the Western Auto Supply company where new and attractive patterns in the 1930 line of automobile seat covers are being displayed.

"Women motorists are particularly enthusiastic about having their cars equipped with seat covers as they combine smart appearance, utmost riding comfort and complete clothing protection," says Mr. Hask.

"That the unweary upholsterer is a collector of dirt and dust is plainly shown by a simple test. Slap the upholstered seat cushion in the car, smelly, then feel the dust and grime between the fingers. It is easy to imagine the damage this dirt causes, both to clothing and the upholstery.

"Beautiful car interiors retain their original beauty with fine tailored, snug fitting seat covers and there is great satisfaction in knowing that the durable materials from which they are made will keep the upholstery like new for the life of the car. Our new

### Color Harmony now Demanded



Sally Blane, of Radio Pictures, is shown at left, selecting a set of seat covers for her car from the new Western Auto seat cover sample book. Above picture shows her selection installed on the car.

Attractive, new patterns and fabrics, designed to harmonize with the prevailing color trend in car bodies and upholstery, are among automobile seat covers one of the most popular automobile accessories, according to the Western Auto Supply Company.

### AND HOWEVER—

Grand in a speedy car. Pushed the throttle down too far? Twinkle, twinkle, little star. Music by the D. A. R.

Argentina Car Imports Rise  
BUENOS AIRES (AP)—Argentina's imports of American passenger automobiles increased 21 per cent in 1929 over 1928. Rising popularity of cars quoted under \$700 was noted in the fact that 76 per cent of the imports were in the low-price class.

The best way to settle a problem is to sleep over it while it settles itself.

**Miss Majestic Contest**  
**VOTE COUPON**  
Good for 100 votes for credit of

M \_\_\_\_\_  
Address \_\_\_\_\_

When properly filled out and deposited in ballot box at the Arcade Theater

Many Bargains Listed on Want Ad Page

## Don't trust WORN tires...



# The U.S. ROYAL

is designed for safety

Worn tires may skid in a pinch—they may blow out at high speed or under quick braking. They are as untrustworthy in an emergency as worn-out brakes.

Insure your safety and that of your passengers by outfitting with non-skid, durable tires of the very highest quality. And that means U. S. Royals—built by the world's largest producer of rubber.

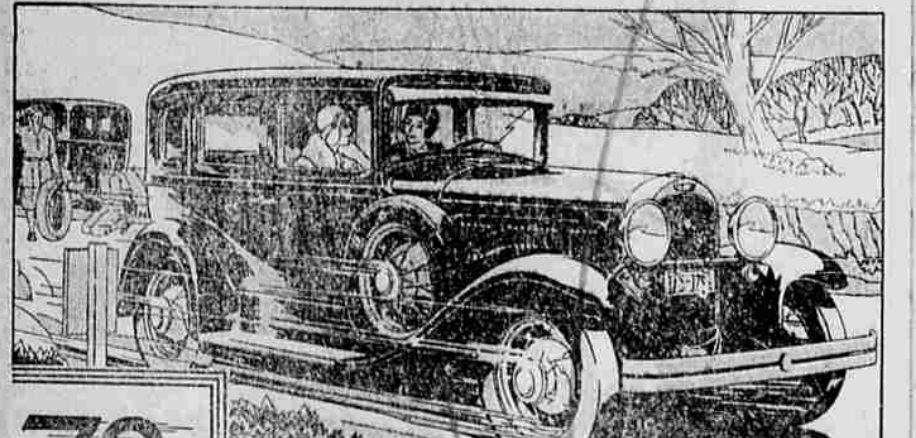
**The Tread That Gives Maximum Road Grip**  
The deep-notched tread of U. S. Royals is designed to give maximum road grip, sure braking and an increase in driving ease. And this same tread is made so tough that U. S. Royals last for thousands of miles longer than other tires of the same price. You can't duplicate this quality and you can't match our prices.

We back the U. S. Royal as the finest tire in the world! GUARANTEED FOR LIFE!

29x4.40	30x4.50
\$5.80	\$7.00
29x4.50	31x5.00
\$6.90	\$9.60

**BLUE MOUNTAIN GARAGE**  
M. A. Harrison, Mgr. Opposite Post Office

# SPEED AND POWER FAR BEYOND ITS PRICE!



## 72 MILES AN HOUR

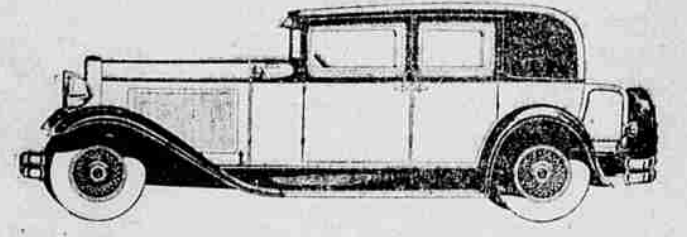
SEDAN DE LUXE DOWN PAYMENT ONLY \$355  
48 IN SECOND GEAR... 65 HORSEPOWER... RICH BROADCLOTH UPHOLSTERY... INTERNAL 4-WHEEL BRAKES... RUBBER INSULATED ENGINE.....

# WILLYS SIX

PRODUCT OF WILLYS-OVERLAND, INC., TOLEDO, OHIO

**GETTINGS & HANKS**  
Jefferson Ave.

## Invest in Dependability



A distinguishing feature of the Nash "400" is its dependability. Nash engineers and Nash craftsmen have designed and built the car for permanence and long life. Only the finest of materials that money can buy are deemed good enough for Nash. And Nash precision standards of manufacture are most exacting. That is why the Nash "400" is such a sound investment. That is why it repays its purchase price more richly in finer performance, in greater comfort, and in longer dependability.

SINGLE SIX \$935 to \$1155	TWIN-IGNITION SIX \$1325 to \$1745	TWIN-IGNITION EIGHT \$1675 to \$2385
-------------------------------	---------------------------------------	---

All prices f. o. b. factory—Convenient Monthly Payment Plan if Desired

# NASH "400"

AUSTIN NASH CO.  
806 ADAMS AVE.



## Give a Chrysler things to do—it does them better!

Go through traffic in a Chrysler. Learn how nimbly and effortlessly it threads its way through the maze... how easily it handles... how safe and sure are its weatherproof 4-wheel hydraulic brakes. Take it out on the open road. Step on it... get the tingle of its speed... test its smoothness and quietness. Climb hills—hills up which you have struggled laboriously in other cars. Watch the Chrysler pass everything on the steepest grades. We will gladly place a Chrysler at your disposal so that you can give it things to do—difficult things—and learn for yourself how much better it does them than any other motor car that you have ever driven.

There is a Chrysler for every purse and need—Imperial, "77", "70", "66" and New Chrysler Six

**L. W. WEEKS**  
Greenwood & Jefferson

Seven Body Styles \$590 to \$675 Prices f. o. b. factory

LOWEST PRICED OF THE LOWEST PRICED CARS IN THE WORLD

**PLYMOUTH**

\$590 And up, f. o. b. factory