

PROVE ECONOMY AT HIGH SPEED

Tests at 20 Miles an Hour Useless, According to Willys-Overland Men.

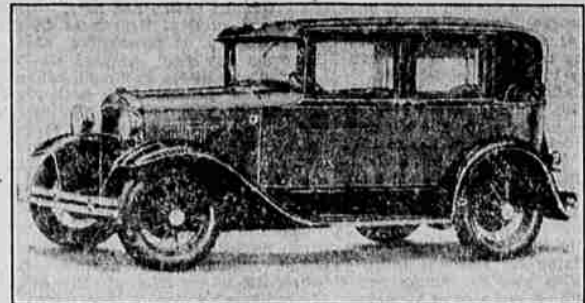
TOLEDO, O., Mar. 1.—All claims for economy for the new Willys-Overland sedan...

Oakland Eight In Speed Tests In California

Shipping up to an high as 50 miles per hour on open stretches, and showing amazing pulling power in high gear, a 1929 Oakland eight sedan made a test run over the Big Oak Flat road to Yosemite recently...

A. H. Patterson piloted the Oakland sedan from Stockton at 4:20 a. m. on a Friday. The fog was so dense that the turn into the Barnston road was missed and so the car continued on the longer Colgate-Valley Home route.

The New Two-Window Fordor Sedan



A FEATURE of the new Ford bodies is the variety of colors offered for the selection of every purchaser. The new Two-Window Fordor Sedan is shown here in Thorne Brown, with black belt and moulding, and straw color striping.

Here Is Good News For Tourists; 'Muddy Iowa' Mops Up Its Roads

DES MOINES (AP)—'Muddy Iowa' through one county. This map will be closed during this year.

Three completely paved transcontinental highways, U. S. 30, 32, and 34, will be waiting at the end of 1930 to speed the motorist on his way and, undoubtedly, to lighten the load of vocabulary which herefore has been an essential to cross the state of the tall corn.

With 2,400 miles of paved highways already in use as a result of three years of intensive effort to deliver itself permanently from the mud, highways will get another \$30,000,000 this year.

Today it is possible to cross the state from east to west without having to drive over a dirt road. U. S. highway No. 30, the Lincoln transcontinental highway, lacks but 20 miles of being completely paved from the Mississippi to the Missouri. These 20 miles will be paved this year, and gravel now makes the gap mud-proof.

U. S. No. 32 running west from Davenport to Council Bluffs still needs 100 miles more paving to be laid during 1930. U. S. No. 34, Burlington to Council Bluffs, is already all paved.

The Jefferson highway, connecting Little Rock, Ark., and Minneapolis, is now paved over its entire distance across Iowa except crossing on a dangerous curve with full knowledge of the road ahead.

Traffic Signs Being Tried By Oregon Officers

PORTLAND, Ore., Mar. 1 (Special)—In line with scientific studies made for the purpose of coping with present day traffic problems and diminishing the number of automobile accidents, officials of the Oregon state highway department are observing closely the utility of new reflective traffic signs, one of which has been installed at Oswego and the other at Oswego.

These new highway warnings have been designated by some traffic experts as "invulnerable signs" for a motorist driving at night as they indicate the dangerous portions of a road as surely and definitely as the standardized highway signs accomplish their object in daylight.

Recently a group of traffic experts in a Marquette sedan investigated the practicability of the new reflector signaling device. A night test was first made of the railroad crossing marker at Oswego and the party found that the radiant silver "R R" on a bright crimson background was reflected to the eyes of the occupants of the car several hundred feet before the sign was reached.

A close examination of the highway marker disclosed that the scintillating warning is produced by a cupped glass reflector, over which is placed a red section of glass cut to emit any required symbol or word. One of the traffic engineers in the Marquette party explained that the same characters can be placed on these reflecting signs as are now being used on the official painted warning. If this type of sign is adopted, a motorist driving at night will be warned that he is approaching a cross-road, "R" turn, railroad crossing or a dangerous curve with full knowledge of the road ahead.

FUEL SYSTEM HELPS ESSEX SMOOTHNESS

A new fuel system contributes much to the inherent smoothness of the new Essex Challenger. With the introduction of the super-six principle some years ago Essex engineers took the lead as exponents of the then new trend to smooth, effortless driving. These engineers have now further improved this feature.

Driving strain has been practically eliminated as far as the mechanical operation by the driver is concerned. A new, two-jet marvel carburetor of the expansion automatic air valve, heat control type removes many of the petty annoyances formerly experienced when driving in winter weather.



The above picture shows a Union Oil dealer introducing the new high compression motor oil to Mr. John Pughle.

MISTAKE TO USE STICK ON RADICAL

So Says August Vollmer, Professor of Police Administration.

By R. H. Hippel (Associated Press Staff Writer) (CINCINNATI, Mar. 1 (AP)—Three distinguished authorities on social science—all professors at the University of Chicago and representing the field of political science, police administration and labor—presented for The Associated Press their views on the wave of unrest.

One was Prof. Charles E. Merriam, head of the political science department and a member of President Hoover's society survey commission; another was August Vollmer, professor of police administration; the third was H. M. Squires, labor expert, professor of graduate courses in economics and arbitrator of the Chicago clothing industry.

In Squires' opinion, the unemployment situation is acute and it would be impossible, he added, for anyone to estimate the number of those out of work.

"There has been an attempt on the part of business, industry and other agencies to minimize the present wave of unemployment, but, despite this, the situation is as serious as in the depression years of 1920 and 1921."

Mistake to 'Use Stick' After a resume of what he termed "communist outbreaks" in Los Angeles, Chicago, Milwaukee, Vancouver, Cleveland, New York and other centers, Prof. Vollmer said it was a mistake for police to attempt "suppression with the stick."

"Let these agitators have their soap boxes; let them about their protests to the street for after all, there is no harm done," he said. Describing the "communist follower" as "usually a psychopathic and queerly-typed individual," Vollmer pointed out that it was the agitator's wish to be disturbed by police "for then, he will be a martyr in the eyes of the preceding unemployed."

In Prof. Vollmer's opinion, police have no right to halt "protest meetings" until "some overt act, destruction of property or injury by force" is attempted.

Vollmer's opinion found an echo in the remarks of Prof. Merriam. "We are in a period of readjustment," Prof. Merriam said. "It is only natural for those out of work to protest and the use of force in suppressing these protest meetings only creates sympathy for them in the eyes of the general public."

Reaching a recent outbreak of what he termed "so-called young communists" in Washington, Merriam said: "President Hoover had the proper idea in meeting such a disturbance. He urged, or practically ordered, them to be released by police."

As a final word, Merriam admonished that it was "up to the people to meet those protests with intelligent methods."

Columbus, O.—Book, executed for murder of Theora Hix; confessed to warden.

Seattle Plant Output Of Cars To Be Doubled

SEATTLE, Wash., Mar. 1 (AP)—Contemplating doubling the output of assembled cars in Seattle in a new \$2,000,000 plant, 30 acres of south end water front property have been purchased at a cost of approximately \$1,000,000 by the Ford Motor company, it is here, Seattle branch manager, announced here Friday.

While the initial plans of the project call for an assembly plant of 115,000 square feet of floor space with dock facilities for the Ford ships, the large area will be used for future expansion, Hines explained. The cost of the original plant will be about \$2,000,000 he said.

No plans have been drawn but, Hines said the new plant will be ready for occupancy early in 1931.

Between 1,000 and 1,500 men will be employed in the new plant with a payroll of between \$1,500,000 and \$2,000,000 annually, Hines said. Approximately 400 to 600 men have been employed in the old plant.

The Seattle assembly plant serves the state of Washington, the Panhandle of Idaho and Western Montana.

LARGE SURVEY PLANNED

WASHINGTON (AP)—Airlines and cameras will enable the British to conduct a survey of Rhodesia and Sudan in 15 months that otherwise would take 15 years. A total of 100,000 square miles will be surveyed and mapped.

New Motor Oil Will Be Placed On Sale Mar. 4

LOS ANGELES (AP)—A new motor oil, developed after four years of experimentation and laboratory research work, will be placed on sale Tuesday by the Union Oil company at all of its Pacific coast marketing stations. V. H. Kelly, manager of district distribution, announced here.

Greater mileage than has heretofore been credited to motor oils is claimed for the new lubricant, which is being marketed under the trade name, "Motorite." It is said to possess among other attributes a super dilution which assures complete lubrication of pistons, cylinders, valves and bearings under the heaviest load conditions. This, coupled with its variable viscosity, or body, which keeps a compression seal within the cylinders at all times, retaining the full power of the motor, is declared to mark the new oil as one of the finest high compression motor lubricants that has yet been placed on the market.

The importance of having an oil with a variable viscosity is explained by lubrication engineers by pointing out that when a motor is cold, the clearance between the piston and cylinder wall is considerably greater than it is after the motor has been run for some time and has become heated. To assure smooth operation they declare it is essential that an oil have a reasonably heavy body at cold temperatures and yet be capable of adjusting itself to diminishing clearances within the cylinders as the motor heats up.

The fact that the new oil will do this and at the same time keep a compression seal within the cylinders is said to make it an ideal lubricant for high compression motors.

It is also claimed for the new oil that it possesses a natural resistance to dilution from gasoline, is free from acid forming properties and forms only a minimum residue of light, fluffy carbon which blows out the exhaust.

Only selected California crude oils are used in manufacturing this new oil, according to Mr. Kelly.

ALLEGED EMBEZZLER JAILED

OREGON CITY, Ore., Feb. 28 (AP)—Accused of embezzling the city of Gladstone funds to the amount of \$7000, E. E. Teeple, prominent resident of Clackamas county, was jailed last night in lieu of \$10,000 bond.

People resigned as Gladstone treasurer on Dec. 3 and a check of the books is alleged to have revealed a shortage starting about eight months previous.

RECOVERS JEWELRY

BERLIN, Mar. 1 (AP)—Pola Negri today recovered possession of her jewelry which had been attached under a writ obtained by Sam Hershman, theatrical agent who has brought into litigation her alleged breach of contract. The actress deposited \$1,000 marks security pending the court's decision in Hershman's suit which asks \$65,000.

Tardieu to Form French Cabinet

PARIS, Feb. 28 (AP)—Andre Tardieu formally assured President Doumergue this afternoon that he would form a cabinet.

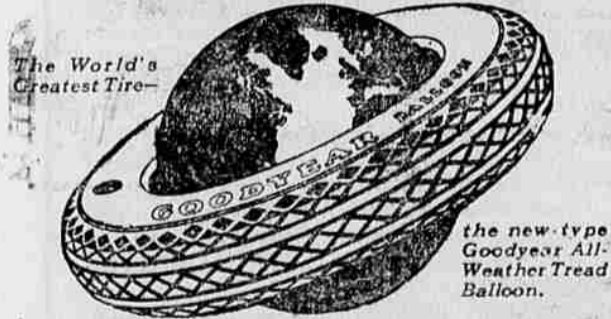
Two southern tennis champions, William Hines, junior title holder, and Bryan Grant, junior champion, are members of the North Carolina freshmen basketball team.

Florida has been in a dual track meet with the University of Havana in the Cuban city March 14 and 15. It will be Florida's third invasion of the island.

Most of the jobs around the house are done by electricity now. The system will not be perfect, however, until some high-voltage invention is worked out for discharging the coal.

STOP! NOW you can get ALL of the Automobile Insurance You Need in one contract with one institution THE TRAVELERS HARTFORD, CONNECTICUT the largest multiple-life insurance organization in the world and pay for it on EASY TERMS U.S. INVESTMENT CO. O. W. Warnock, Mgr.

When You Buy Tires On Time Payments—Why Not Buy the Best?



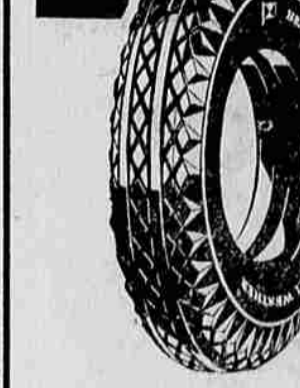
Buy high-quality tires and you'll never regret it—buy Goodyear Tires, and Tubes, and enjoy the very same satisfaction that the man who pays cash has always received.

We offer you a complete line of Goodyear Tires, and Goodyear-made Pathfinders, on easy terms, knowing that their service from the very start will make you a firm customer. No delays, no embarrassment. Simply drive your car over; get one, two, or more tires, just as you please. A small down payment, and that's all—thereafter you pay as you ride.

Genuine GOODYEARS BRAND NEW FIRSTS ON CREDIT

W. H. Bohnenkamp Co.

a really STUNNING new tire you ought to see!



The Bigger, Handsomer Goodyear HEAVY DUTY

It's for extra STYLE, extra mileage, extra road protection. Your car looks smarter on these bigger, handsomer, stronger New Goodyears with their deep-cut, extra-thick All-Weather treads, the outer blocks of which are primed down into silver-striped side-walls. Be sure to see these really stunning new Goodyears before you again buy tires. NO INCREASE IN PRICE!

We also offer low 1930 prices on GOODYEAR Pathfinder Full Oversized Balloon

29x4.40 \$5.79

New style Pathfinders, superior to many high-priced makes. Values possible because Goodyear builds more than 1/4 of all tires sold in America. All firsts—standard life-time guarantee. Careful mounting free.



Playle Oil Company