

Motorists May Receive Income Tax Deductions

WASHINGTON (AP)—Nine deductions from gross income may be made by automobile owners who must file federal income tax returns and two items of expense may not be deducted.

Deductions are allowed on the following items: State and local taxes paid as registration fees, driver's license, state, personal property taxes and municipal taxes.

The total paid as a gasoline tax where it is a consumer's tax. Interest on money borrowed for the purchase of an automobile.

Operating and maintenance expenses, including depreciation, on automobiles used wholly for business, or a pro rata share representing business use where a passenger car is used chiefly for business.

Automobile insurance on cars used for business. Uncompensated losses sustained by reason of damage to any automobile used for either pleasure or business.

Damages paid for injuries to persons or destruction of property provided the automobile at the time of the accident was being used for business.

Finance charges on automobiles purchased which covers interest and risk on the loan, but not the amount covering the premium on insurance to protect the finance company's interest.

Loss sustained where an automobile used for business purposes is traded in for a new car.

Deductions are not allowed for the amount paid for an automobile used either for business or pleasure and loss sustained where an automobile used for pleasure is traded in for a new car.

Moslems Trek Back to Homes In Jugo-Slavia

By Robert M. Berry (Associated Press Correspondent) BELGRADE, Jugo-Slavia (AP)—This kingdom is preparing to welcome back to Moslem communities in Bosnia and Herzegovina several thousand adherents of Mohammedanism who went to Turkey after the World war.

Permission for the return trek has been obtained through the Jugo-Slavian minister to Ankara. About 150,000 Mussulman chose Turkish citizenship under the optional clauses of the post-war treaties when the Austro-Hungarian empire broke up. Turkey did its best for them, furnishing lands and offering such other encouragements as the condition of its treasury would permit.

But many of them found they could not withstand the rigors of the climate in the sections to which they were assigned. Another outstanding handicap was language, the transplanted folk speaking only Serbian and finding it next to impossible, with their talents to master Turkish.

Many others became dissatisfied when Mustafa Kemal started his westernization reforms. The Balkan Moslems are nothing if not conservative and the edicts against such distinctly Mohammedan customs as the veiling of women and the wearing of the fez by men, irked them sorely.

This was illustrated by a scene witnessed recently on an international express train making the journey from Vienna to Belgrade. In one of the compartments was a woman dressed in a well-cut tailor-made dress, smart hat, silk stockings and elegant foot-wear with powdered cheeks and lightly colored lips.

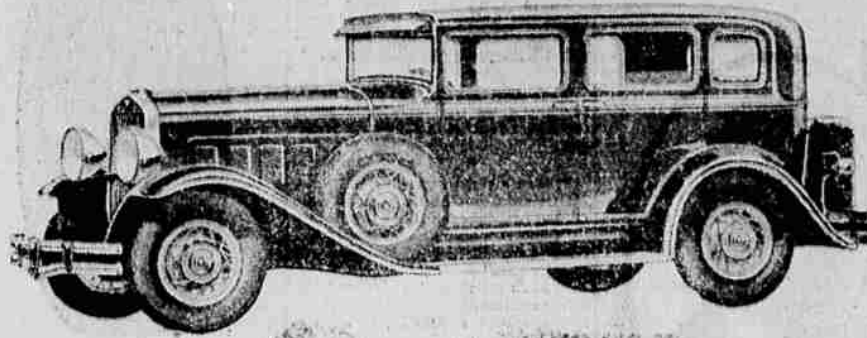
As the train approached Brod, where a change has to be made for the Bosnian line, the woman took down a suitcase, carefully laid her stylish hat in it, threw over her shoulders a long blue mantle which reached her heels, fixed a broad white linen collar round her neck and covered her face with a thick veil.

The train stopped and she got out. She was met by a man wearing a fez, and as the train moved on the ex-fashionable woman could be seen walking meekly behind her husband.

Inquiries probed the explanation that it was impossible for any Bosnian woman to adopt modern ideas or dress publicly, as it would mean ostracism.

Smart Alec (greeting on bus): Morning, Noah, is your old ark full? Driver: Nope. Only one jackass so far. Come on in.

Stylish Modern Lines Mark Hudson's Great 8 Sedan



The stylish modernistic motif which adds distinction to this Hudson Great Eight Standard Sedan has been carried through to the smallest detail in color, appointments, upholstery and fittings. Body, chassis and motor are all produced in Hudson plants, thus providing a completely balanced car and insuring maximum smoothness from the new Great Eight Motor.

SMOKIES BECOME NATIONAL PARK

Federal Government Accepts Title to 150,000 Acres of Mountains.

By John F. Osborne (Associated Press Staff Writer) KNOXVILLE, Tenn. (AP)—The peaks and valleys of the Unaka range—called the Great Smokies because of the clouds that hug their sides and veil their summits—have become a haven instead of a wilderness.

When the federal government accepted title to 150,000 acres of Tennessee and North Carolina mountain country from Gov. O. Max Gardner of North Carolina and Gov. Henry H. Horton of Tennessee February 4, the title of the late Gov. Austin Peay of Tennessee for a national park embracing Eastern America's highest peaks had borne fruit.

Negotiations for 227,000 additional acres necessary before the national park system developed the area on a basis comparable to Yellowstone and the other great parks of the west is under way.

In the meantime, the government will take the 150,000 acres for administration and protection as a national playground.

One spring day in 1924, Governor Peay rode on horseback to the top of a pile of rock called Gregory's Bald.

Before him stretched the outline of bald-faced rocky peaks, softening by the haze of springtime and slipping into wooded valleys dotted with the homes of mountaineers whose ancestors wrested the hills from the Indians.

The governor, inspired by that view, started the park movement. He helped to obtain state grants of \$1,500,000 and had a hand in negotiations with North Carolina, which appropriated \$2,000,000.

He died in office after the business of purchasing lands was under way, in the hands of state commissions headed by Col. D. C. Chapman, Tennessee, and Mark Squires, North Carolina.

Before Peay got behind the project a small group, including Col. Chapman, had struggled along and was about to admit defeat. Afterward the Lura Spellman Rockefeller foundation put up a \$6,000,000 trust fund and matched every dollar obtained from other sources. Then came recognition from the interior department and approval by congress.

The cloudy ranges, 704,000 acres of which are suitable for park purposes, are within 500 miles of the homes of half the population of the United States.

The great peaks, rising more than 6,000 feet above sea level, include Mt. LeConte, Mt. Glief, Thunderhead, Silver Bald and Gregory's Bald—"bald" because they tower as bare rock.

Asheville, N. C., and Knoxville are the principal entrance cities to the park.

ALLOYS FORECAST GREAT MACHINES

New Age is in Prospect, With Many New Metals Likely, is Belief.

CAMBRIDGE, Mass. (AP)—An age of alloys is in prospect, an era of discovering new metals with which to make machines capable of doing still more of the mental tasks of men and women.

One great undertaking in this direction is outlined by Dr. G. H. Waterhouse, professor of metallurgy of the Massachusetts Institute of Technology and head of the committee recently appointed by the engineering foundation to organize research into iron and steel alloys.

Alloys are made by combining metals, and sometimes the addition of very small amounts of the right substance cause surprising changes. "The creating of special steels" he says, "already has influenced the daily life of nearly every person. The public has marveled at endurance flights lasting hundreds of hours, seldom realizing what changes in aircraft engines made the records possible."

The perfect function of these engines depends largely upon valves made of special steel capable of standing up under terrific stresses. We would not have had these remarkable engines if these special steels had not been developed.

Special steel may develop other significance in aviation for the framework of one of Great Britain's new dirigibles is built of this material.

Large locomotives that work under unprecedented steam pressures are another tribute to special steels. It was necessary to develop steels which would not "creep" under high temperatures.

These new steels also make possible the use of 1200-pound pressures to the square inch in steam-electric plants.

Germany's newest cruiser held by treaty to 10,000 tons, was built of special steels that Dr. Waterhouse says has set engineers elsewhere to studying. These steels contributed to the Bremen's trans-Atlantic records.

Pony Goes to Court CAMBRIDGE, Mass. (AP)—A pony put in an appearance in superior court here during a \$30,000 suit in which a woman complained of being knocked down by the animal. The animal climbed three flights of stairs.

High Mileage Registered NEW YORK (AP)—Flying 5,657,923 miles in scheduled operation, planes of the Aviation Corporation accounted for more than one-third of the estimated total of passenger, mail and express regular service by air.

Yankee Pilots Fly China WASHINGTON (AP)—American pilots fly Chinese passenger and mail services, according to Granville Woodard, department of commerce trade commissioner.

Prisoner: My name is Sparks, I am an electrician, and I am charged with battery. Judge (after recovering his equilibrium): Officer, put this guy in a dry cell.

SMOKIES BECOME NATIONAL PARK

Federal Government Accepts Title to 150,000 Acres of Mountains.

By John F. Osborne (Associated Press Staff Writer) KNOXVILLE, Tenn. (AP)—The peaks and valleys of the Unaka range—called the Great Smokies because of the clouds that hug their sides and veil their summits—have become a haven instead of a wilderness.

When the federal government accepted title to 150,000 acres of Tennessee and North Carolina mountain country from Gov. O. Max Gardner of North Carolina and Gov. Henry H. Horton of Tennessee February 4, the title of the late Gov. Austin Peay of Tennessee for a national park embracing Eastern America's highest peaks had borne fruit.

Negotiations for 227,000 additional acres necessary before the national park system developed the area on a basis comparable to Yellowstone and the other great parks of the west is under way.

In the meantime, the government will take the 150,000 acres for administration and protection as a national playground.

One spring day in 1924, Governor Peay rode on horseback to the top of a pile of rock called Gregory's Bald.

Before him stretched the outline of bald-faced rocky peaks, softening by the haze of springtime and slipping into wooded valleys dotted with the homes of mountaineers whose ancestors wrested the hills from the Indians.

The governor, inspired by that view, started the park movement. He helped to obtain state grants of \$1,500,000 and had a hand in negotiations with North Carolina, which appropriated \$2,000,000.

He died in office after the business of purchasing lands was under way, in the hands of state commissions headed by Col. D. C. Chapman, Tennessee, and Mark Squires, North Carolina.

Before Peay got behind the project a small group, including Col. Chapman, had struggled along and was about to admit defeat. Afterward the Lura Spellman Rockefeller foundation put up a \$6,000,000 trust fund and matched every dollar obtained from other sources. Then came recognition from the interior department and approval by congress.

The cloudy ranges, 704,000 acres of which are suitable for park purposes, are within 500 miles of the homes of half the population of the United States.

The great peaks, rising more than 6,000 feet above sea level, include Mt. LeConte, Mt. Glief, Thunderhead, Silver Bald and Gregory's Bald—"bald" because they tower as bare rock.

Asheville, N. C., and Knoxville are the principal entrance cities to the park.

GARAGE GOSSIP

Chevrolet Purchases—M. E. Ruddle, of Cove, has purchased a Chevrolet coupe from the Larson Chevrolet garage.

Other Chevrolet sales are: Oregon Trail garage, ton and a half truck, coupe and sedan; J. H. Berry, Route 1, La Grande, Imperial sedan; Albert Kimball, government trapper, Kamah, club sedan; White Line Freight, truck; Claude Puckett, coach, and William H. Berry a de luxe sedan.

Carload of Cars—A carload of new Chevrolet has been received at the Perkins Motor company this month.

New Cars Received—Two carloads of Ford cars have been unloaded by the Perkins Motor company this week.

New Territory Representative—O. O. Gooch of Portland is replacing C. G. Lund, territory representative for the Kelly-Springfield tire company, for the Eastern Oregon district. Mr. Lund has gone to Portland, after making his home in this city for two years.

FIVE-ELEMENT TUBE CAUSES LIVELY TALK

By C. E. Butterfield Radio Editor (Associated Press Feature Service)

Appearance of the pentode, or five-element tube, has created lively discussion in the radio industry.

On the one hand is a statement questioning the need of the tube to the industry at the present time, while on the other are statements that in tests the pentode has shown a gain three times over that of the screen grid tube.

There is a certain amount of confusion between the English type of pentode and the one available in America. The English tube is a power output, designed to give a greater voltage swing in the last audio stage of the receiver. The American pentode is a radio frequency amplifier, which also can be used as a detector.

Pat Flanagan, WBBM sports announcer, wears a baseball mask when he goes to the ring side to report a boxing match. Before he masked he got a black eye from an over-enthusiastic fight fan.

Whether the tube will have reached the stage required for its adoption in commercial receivers this year cannot be determined.

Venetian Ball To Climax Season

MIAMI BEACH, Fla. (AP)—Delights of Venice will end a sixteenth century spill over the second annual subscription ball here February 14.

The ball will climax formal soiree affairs of Miami's winter season.

Elaborate and costly costumes, specially built scenery and the warm caress of the Gulf stream breeze will mark the mid-winter affair.

The committee of one hundred, made up of the nation's socially elegant who winter in the Miami area, has announced through Clayton Sedgwick Cooper, its president, that the ball will outdo in brilliance all other functions of the season, and will rival the famous Beaux Arts ball of New York.

The guest list, aside from names of members, will not be made public until shortly before the ball is held at the Nautilus hotel.

Costume designers have established a branch office here for the several hundred couples—from 400 to 1,000—whose names will be on the guest list. Sponsors have been rigid in their study of social history in selecting guests, and have ruled that costumes must be worn to conform with the general theme of the ball.

Mr. Farmer,

Is the Magneto on your Truck or Tractor ready to go?

IF NOT

We are equipped to make it go.

WE CAN SHOW YOU

GIVE US A CHANCE

Automotive Electric Co.

213 Greenwood Phone M. 520

Across from L. W. Week's, Chrysler Dealer

THE FASTEST, MOST BEAUTIFUL WILLYS-KNIGHT EVER BUILT



GREAT SIX SEDAN \$1795

Great Six Coupe, Roadster, 5-passenger Coupe at same price. "70-B" models, \$1775 to \$1195. Equipment, either than standard, extra. Prices f.o.b. Toledo, O., and specifications subject to change without notice. Wire Wheels.

\$100.00 Additional POWER AND TORQUE BEYOND ANY 6-CYLINDER ENGINE OF ITS SIZE. BEAUTY THAT WINS INSTANT ADMIRATION AND DETAILS THAT REWARD YOUR CLOSEST SCRUTINY.

The design of the 1930 Willys-Knight Great Six—in line, color blending and detail—is different from that of any other fine car. In performance, too, the Great Six is different, its 87-horsepower engine reaching new heights of speed, smoothness and efficiency even for the patented double sleeve-valve motor. The 1930 "70-B" is offered at a record low price for so large, so beautiful and so powerful a Knight-engineered car. WILLYS-OVERLAND, INC., TOLEDO, OHIO

GETTINGS & HANKS FIR AND JEFFERSON

HUDSON'S Great 8



Questions the Wisdom of ever paying more for any car. Its rich appointment and appearance; its outstanding performance, remarkable economy and its pride of ownership, in every particular of motor car satisfaction, questions the wisdom of ever paying more for any car.

It is a question that motorists are everywhere asking. It is revealed in hosts of new owners turning to Hudson from every size and price field. It is confirmed in the most spontaneous welcome ever extended an eight-cylinder car. This is the car which all Hudson's past achievements are set aside to produce. That fact alone speaks for a remarkable development. When you see and ride in it you will understand that an entirely new standard of motor value has been established. It genuinely questions the wisdom of paying more for any car.

Table with 2 columns: Model and Price. Includes Standard Length Chassis-Coupe, Roadster, Phaeton, and Long Wheelbase models.

Blue Mountain Garage M. A. Harrison Mgr. Opposite P. O.

ONCE UPON A TIME-



Senator John Thomas, of Idaho, taught country school for two terms. He was born on his father's homestead in Kansas in a rock dugout which was the family home. That was Jan. 4, 1874.