

### Traffic Accidents In Oregon In 1929 Resulted In Deaths Of 189

SALEM, Ore., Feb. 5 (AP)—Traffic accidents in Oregon during 1929 resulted in the death of 189 persons and injuries to 4711, says the annual report of T. A. Haffety, chief state traffic inspector. The total number of accidents was 20,151. Fines for the year totaled \$34,333.82 and fees collected by the department \$89,514.82. The whole number of arrests was 13,559. Stolen cars recovered had a value of \$82,871 and stolen motorcycles \$175.

During the approximately 10-year period since the department was organized August 1, 1920, delinquent fees have been collected in the sum of \$167,397.14, fines imposed total \$375,917.48, the value of stolen cars recovered \$498,518, and collections on non-resident expired permits \$352,498.50.

During 1929 in addition to the collection of fees \$7,882.50 was collected for violations of the license laws.

"The matter of Oregon residents attempting to evade the provisions of requirements by operating on foreign license plates is a continual problem that must be confronted," says the report. "In the past year 2268 cases were handled and the fees so collected aggregated \$40,324.85."

"The overcrowding of trucks and consequent damage to highways is found to be a serious problem. Fines for this offense totaled \$242,007."

Non-resident registrations during the year totaled 103,008, and it is estimated that an additional 10 per cent operated in the state without procuring non-resident permits.

School buses in the state numbered 297, about 75 per cent of which are in good condition. In motor vehicle lighting it is estimated that 45 per cent efficiency exists.

Motor vehicle accidents increased 291 over 1928, personal injuries decreased 210 and deaths decreased 14.

Haffety gives city enforcement departments, the American Legion, civic organizations and motor clubs credit for helping to reduce fatalities.

### NEW 3-TON TRUCK MODEL OFFERED

#### Blue Mountain Garage Announces International's Latest "A-5."

The Blue Mountain garage dealer for International Harvester motor trucks, announces a new International 3-ton speed truck known as the model "A-5." This new model will be shown by the International Harvester company at their factory branch in Portland during the month of February. Deliveries will be made in a limited quantity during February.

Model A-5 is powered by International Harvester's six cylinder valve-in-head engine, with a 3 1/2-inch bore and a 4 1/2-inch stroke and 275-inch piston displacement. It is set in a three-point mounting with rubber cushioned rear supports.

The cylinder block is cast in one piece and the engine has removable cylinder sleeves, two piece head machined combustion chamber, seven bearing crankshaft of drop forged steel, carbon chrome nickel alloy pistons, heat treated stainless and dynamically balanced. Three wheelbase lengths are offered, of 156, 190 and 210 inches. The frame is of pressed steel channel, with a deep center section. Pressure foot lubrication is used on all main, connecting rod, cam and rocker arm shaft bearings. No pipes are used, as the drilled cam shaft acts as an oil distribution manifold.

The transmission, five speeds forward and one reverse, selective sliding gear type, is mounted in unit with the engine. Drop centered

I-beams are used for the front axle, steel forged and heat treated. Reverse Elliott type steering knuckles are of drop-forged, heat treated chrome molybdenum steel. Ball bearings have been used for vertical king pin load. In the rear a semi-floating spiral bevel gear type mechanism is employed with a heat-treated steel driving shaft, set in a malleable iron, banjo-type housing. The differential bearings are tapered rollers and pinion straddle mounted on ball bearings. Wheel bearings are of the combination straight and tapered roller type.

Standard equipment includes cowl and dash, front fenders, short running boards, front bumper, license brackets, starter, battery, horn, electric head, tail and dash lights, oil filter, air cleaner, jack and tool kit, speedometer, head indicator, ammeter, oil pressure gauge, choke and manifold heat control, mounted on the instrument panel on the dash.

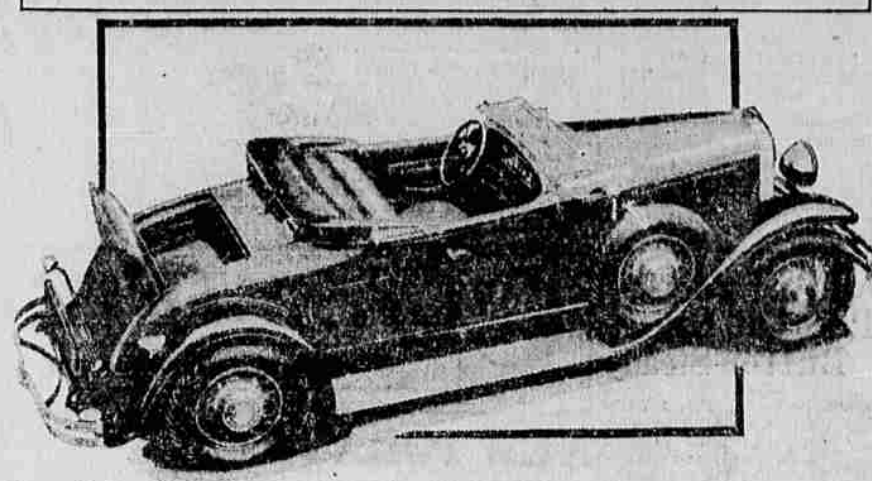
Rear brakes are being provided for installation.

A manually operated winter front has been provided for cold weather operation. This is designed to be easily removable and to be quickly installed.

**From the Bible**  
The expression "feet of clay" is found on a passage in the Bible—Daniel, 11:33. The reference concerns an idol "and the legs of iron, the feet part of iron and part of clay."

**Best Seller Hymn**  
What hymn is the most popular in the United States? A comprehensive national vote taken in 1924 showed that "Abide With Me" is by far the most popular.—American Magazine.

### Buick Presents New Roadster



Herewith is new Sport Model "64," Buick Motor Company's newest product, presented to the public for the first time at the 1930 January and February Automobile Shows. The new car is built on the long 132-inch wheelbase, and is powered by the great 99-horsepower valve-in-head motor.

#### Buick Roadster Is Displayed At West Coast Show

Buick's dashing new roadster, built on the long 132-inch wheelbase, made its first Pacific coast appearance at the Pacific Automobile show in San Francisco. With its chassis embodying all the qualities of Buick stamina and performance this new four-passenger roadster has been designed to present the ultimate in style, elegance and comfort. It is priced at \$1555 at the plant factory.

Long, low racy lines, with exceptional capacity in both front and rear compartments characterize the styling of the distinctive and beautiful body. Three selections of new and stylish color combinations are available, with fenders and other exterior parts colored to harmonize with the body. The smart, low top with tailored finish blends with the distinctive body lines. Two studies of fine, double-texture, top material are available.

The interior of the new Buick roadster is complete in every detail and has smooth, cushion type finish with low, luxurious adjustable seat designed to provide the maximum of driving comfort.

The three color combinations in which the new comes offers a wide variety of choice. One combination of colors is offered as follows: body in 7026 maroon with black moulding and Buick vermilion stripe, black fenders and sheet metal, black leather upholstery and natural wood wheels. Special wire wheels are offered in Arville red.

Another combination consists of predator green body with moulding in Bar Harbor tan and a cream stripe, fenders and sheet metal in Bar Harbor tan, brown leather upholstery and natural wood wheels. The wire wheels, as special equipment, are finished in Coronado tan.

The third selection presents the roadster in El Paso tan body, boulevard maroon moulding, Buick vermilion stripe, red leather upholstery, boulevard maroon fenders and steel metal and natural wood wheels. This special wire wheels are in Arville red.

#### Interior Of New Essex Is Roomy, Wider

The interior trim of the new Essex Challenger is unusually attractive and blends with the modernistic motif of decoration. The widening of the body has added great roominess whilst the increase in length insures ample leg room.

Seat coverings, both front and rear, are in wider buttoned seams, resembling the interior finish in much costlier cars. The new seats are exceptionally soft and restful and a newly designed arm rest in the rear seat is placed at just the right height for comfort. Adjustable front seats, an innovation of the 1929 Essex, the Challenger have been retained and further perfected.

A modernistic design is at once apparent in the new hardware and all hardware fittings are located in the most convenient and accessible places.

Front windshield adjustment has been facilitated by replacing the old side adjustments with a new toggle handle located at the bottom center of the windshield. Now the driver may open or close the windshield with a simple lever movement which will occupy but a moment of his time.

A new feature which retains unbroken lines in the rear interior is the disappearing curtain roll which opens and closes through a slit in the rear panel.

#### Performance Of New Willys Six Matches Beauty

With leadership in the low priced six cylinder field assured by its 65-horsepower development and speed of 72 miles an hour, the new Willys six brings to this class a beauty and harmony of design comparable only to the car's remarkable performance, and is considered by observers as Willys-Overland's major achievement in 22 years of automobile manufacturing.

Trim radiator, long sweeping body lines and tailored rear quarters produce an effective streamlining that suggests the car's great speed, while rich new colors and luxurious upholstery and fittings complete an effect of quality unusual in a car selling under \$1,000.

The Deluxe sedan and roadster, which are equipped with wire wheels, gain added smoothness by the mounting of the spare wheel in the right front fender web.

Closed models, the Deluxe sedan, standard sedan, coach and two and four passenger coupe, appear in loose blue of almost midnight hue, that is accentuated by the Tintooch cream striping and black moulding. The popular scrubbrush, or loamie green, is used for the four passenger roadster, with mouldings of daily green. The striping here also is tintooch cream, while the wire wheels are Harper green. The two passenger coupe is the popular blue gray, with black moulding and cream striping.

A fine grade of tan-brown fabric, in appearance and quality like that found in high priced cars, is used for upholstery in all the closed models.

In the four passenger roadster, real leather of walrus grain is utilized.

The careful attention to details which characterizes the new Willys six is noticeably in the arrangements of the dash, which contains in addition to the usual instruments, the manual heat control, and in the quality fittings found in all models.

Adjustable front seats are provided in the sedan models, while all models contain the numerous important items essential to the comfort and convenience of driver and passengers.

#### JAZZ DEFINITION

EUGENE, Ore., Feb. 7 (AP)—A new definition for jazz music was given 300 students here today by Prof. S. Stephenson Smith who said that jazz "is a good broad musical joke done in the explosive American manner."

#### INJURIES NOT DANGEROUS

GRANTS PASS, Ore., Feb. 7 (AP)—Physicians attending Charles Ebb, former member of the University of California football team, announced today the injuries he received yesterday when his automobile crashed into a ten-ton oil truck were not as severe as at first thought.

**ANNOUNCEMENT!**

# \$585

F.O.B. TOLDO, O.

**THIS NEW PRICE MAKES THE WHIPPET THE LOWEST PRICED OF ALL 4-DOOR SEDANS**

It is Willys-Overland's 1930 contribution to economical transportation, an impressive reduction on a great car with a great future . . . .

## 1930 Whippet

GETTINGS & HANKS  
Fir & Jefferson

#### HOOVER HEARS OF EXPECTED AUTO OUTPUT

WASHINGTON, Feb. 8 (AP)—John N. Willys, chairman of the board of the Willys-Overland company, told President Hoover this week the automobile industry expects to produce 500,000 more automobiles in 1930 than in the previous year.

Willys was accompanied to the White House by Senator Fessenden of Ohio. The manufacturer said the automobile business this year would be as good as from the standpoint of profits as it was last year because the depression which followed the steel market decline had caused drastic cuts in overhead charges.

The sale of automobiles, he said,

#### Interest Gains In Road Beautifying

PORTLAND, Ore., (AP)—Interest in the movement to beautify Oregon's highways being sponsored by the Menzies Gardens Highway Association is growing rapidly, declares Wells Gilbert, secretary.

The work of the association, primarily interested in encouraging the planting of trees along highways, at present is centered on disseminating information and supplying ideas and suggestions.

A valuable aid in this movement, Gilbert says, is the publication

#### Harvard Man Held As Blackmailer

BOSTON, Feb. 7 (AP)—A 25-year-old former Harvard student, Allen R. Burke was held today on a warrant charging him with mail threat aimed at the debilitated daughter of Donald McKay Frost, Boston lawyer.

Investigation by police and private agencies, with the surveillance of Burke and his associates the past week, led to his arrest last night. The arrest of other persons, including a woman, police said, is expected.

# STOP!

## NOW

you can get

# ALL

of the

## Automobile Insurance

# You Need

in one contract with one institution

THE TRAVELERS HARTFORD, CONNECTICUT

the largest multiple-life insurance organization in the world and pay for it on

## EASY TERMS

# U.S. INVESTMENT CO.

O. W. Warnock, Mgr.

## A 3-TON 6-CYLINDER SPEED TRUCK

Here is the new 3-ton 6-cylinder International Speed Truck—Model A-5.

Sponsored by twenty-six years of automotive achievement, this latest member of the International line of trucks is definitely designed to provide the widest range of modern hauling service ever embodied in one truck.

The chassis itself, ready alike for high-speed transport and for the severe punishment of dump truck service, is being hailed as an outstanding advancement in automotive engineering. Read the specifications given at the left. And Model A-5 is as attractive in appearance as it is powerful in performance.

**Brief Specifications of Model A-5**

Wheelbase: 156, 170, 190 or 210 inches.  
Engine: International design and manufacture; 6-cylinder, valve-in-head, 7-bearing camshaft, removable cylinders; 3-point mounting with rubber-cushioned rear supports; pressure lubrication.  
Clutch: Single plate, with built-in vibration damper.

Final Drive: Spiral bevel gear type.  
Frame: Pressed-steel channel type, with deep middle section.  
Spring: Semi-elliptic, front and rear; Auxiliary springs, quarter-elliptic.  
Tires: 31x7 front, 31x7 dual rear, pneumatic, mounted on all-steel spoke-type wheels.  
Brakes: Service, 4-wheel mechanical, reverse, internal expanding. Emergency, internal expanding on rear.

It's

# CHRYSLER-

always Chrysler—for PERFORMANCE!

There are all kinds of cars at all kinds of prices—but no other car can give you performance comparable to the brilliant speed and pick-up of a new Multi-Range Chrysler.

With larger and far more powerful engines, with new Down-Draft carburetion such as is found in the latest airplanes—and with the sensational Multi-Range four-speed transmission and gear shift—Chrysler gives motoring an entirely new vigor.

Never before have you known such performance—such brisk aliveness of pick-up—such speed with silky smoothness—such ease, quickness and non-clashing quietness of gear-shifting—such fast time up hills.

And added to the thrill of this new performance is the splendid pride appeal of new and larger bodies—richly upholstered—jewelry-fine interior fittings executed by Cartier et Cie. Thus today, more than ever, a Chrysler inspires a pride of ownership all its own.

**MULTI-RANGE CHRYSLER**

Copyright 1930 by Chrysler Corporation

CHRYSLER INSPIRES A PRIDE ALL ITS OWN

L. W. WEEKS  
Greenwood & Jefferson