

Ford Roadster Makes Record On Ohio Track

Five hundred hours and one minute comprised the non-stop endurance run performed by a Ford car on the Cincinnati and Hamilton speedway track recently under the sponsorship of the Greater Cincinnati dealers. A stock model A sport roadster was used, and a distance of 14,544 miles was traversed between the time of starting, 8:25 p. m. November 17, and the time of ending, 8:25 p. m. December 2.

The car was driven by Ralph Greenleaf, Jr., and Henry Schloer, alternating at the wheel. The weather included heavy rain and snow, and the temperature on several days was zero or below.

Gasoline was supplied by the use of containers filled by guards on the grounds, and hauled the drivers while the car was passing by. The skimming and changing of oil was performed while the car was in operation by an attendant, the car having been provided for the work by fitting a small board platform on the front bumper and support of the car.

The drivers at no time left the car, their meals were served with the car in motion, and they slept in the roomy rear deck of the car. While no attempt was made to establish a speed record, an average speed of but a fraction less than 15 miles per hour was maintained throughout the 700 hours and 1 minute of non-stop running.

When the run was completed a large crowd, composed of dealers and citizens of Cincinnati and Hamilton, including K. B. McVey, one of the official starters, greeted

Chrysler Sales During 1929 On Par With 1928

Sales to the public of Chrysler built cars, trucks, buses, motor coaches and commercial vehicles during the year 1929 practically equaled the number sold in 1928, according to the best preliminary estimates which can be made at this time.

This splendid record depends for Chrysler credit together with the maintenance of production during the latter part of 1929 his materially reduced field stocks and places their dealers in the enviable position of entering the new year with approximately 25 per cent less cars on hand than a year ago.

December factory shipments totaled 12,428 cars, made up as follows: Dodge passenger cars 5,741; the Chrysler Lines including the '28', '29', '30' and Imperial 1,287; De Soto 1,533; Plymouth 1,114; Dodge commercial cars 2,881 and Fargo commercial cars 241. This brings the 1929 total factory shipments to within approximately 10 per cent of last year's record.

Colds Cut With Artificial Sun

Cornell University Finds Apparatus Reduces Winter Illness.

ITHACA, N. Y. (AP)—In a clerical room up under the rafters of the old armory, Cornell university this winter is making artificial summer sunshine to help guard its students against colds.

Electric apparatus makes the light in two kinds, one for boys and the other for girls, offering for the first time to large numbers of students a method of preventing colds that is based on three years of successful experimenting upon small selected groups.

Hundreds of students took the place for it require only 10 to 15 minutes each a week to absorb the sunshine armor.

During the men's hours the boys arrive about a dozen at a time under an allotted schedule. They disrobe and dress for the light in not much more than a pair of dark socks to protect their eyes.

Awaiting them is a room that at a turn of a switch shimmers in the glow from a dozen mercury-vapor tubes, blue-green, with shafts of light more than an inch in diameter, each standing in vertical position upon the floor and as tall as a man.

These lights are placed around 11 o'clock and down the middle of the room. In front of each, footprints painted on the floor show the proper distance to stand, 18 inches away from the light.

The boys stand on these marks and at regular intervals shift to another light, thereby moving through a cycle that in 10 minutes gives an equal portion of direct rays to every part of the body.

An electric clock rings the time signals for shifting from one light to another. The tubes radiate the ultra-violet light that causes tan, but the boys do not remain long enough to acquire even redness. In this secrecy of treatment appears to be the secret of success of the Cornell method.

It is a technique worked out in experiments each winter since 1926 by Dr. George H. Maughan and Dr. Ivan J. Smiley, head of the Cornell health department, under a grant from the Sage fund.

Previously some light treatments elsewhere had indicated negative results for colds. Scientific theories, the Cornell scientists decided that possibly factors had been due to poor exposure and accordingly used a mild dosage.

They found that this mild use of light "will in most instances reduce by at least 40 per cent the incidence of cold in cold-weather individuals."

They concluded also that it "is not a complete panacea for the prevention of colds" because lack of ultra-violet light is but one of several known factors in colds.

All these preliminary experiments were made upon men, but Dr. Maughan said there should be no difference in the effects of the light upon women.

But because the girls are more subject to anemia, a different set of lights was installed for them, giving off infra-red, or heat rays, in addition to a high per cent of violet and the comparatively cold ultra-violet.

These combination rays are made by two lights, in which the carbon-arc light special rays to intensify the health rays.

The apparatus used in this winter sun parlor would cost about \$2500. A small fee is charged students taking the treatment.

U. S. LEADS IN CARS; EUROPE WITH ROADS

CHICAGO (AP)—A graphic picture of motor car competition in the United States is furnished in the analysis of world roadway conditions completed by the National Industrial Conference board.

The United States has more than three times as many automobiles as the rest of the world, but Europe has more than four times as much surfaced roadway as the United States.

ADVERTISING AIDS TEXAS TO SETTLE RANCH DISTRICT

LUBBOCK, Tex. (AP)—The South Plains area of Texas has found that it pays to advertise its ranch opportunities.

A year ago Lubbock started a campaign to bring settlers to the section that farming was now being laid. This fall about 600 families moved into the district, and more than 20,000 acres were sold at low prices.

Several large ranches that once spread over thousands of acres have been split up into farms averaging 100 acres apiece.

Next year in an effort to increase its population still more, Lubbock will spend \$12,000 for national advertising on the South Plains advertising, even, sodas, grocers, wheat, grain merchants and live stock are drawn on the former ranch land.

GENS MAKE FERTILIZER

NEW YORK (AP)—A peace time use for cannon barrels, says H. C. Sherman, Mitchell professor of chemistry at Columbia university, is to make high percentage fertilizer apparatus for producing ammonia salts for farm fertilizer.

STUDENTS ESCAPE FIRE

COLUMBIA, Mo., Jan. 24 (AP)—Fire of undetermined origin, which destroyed one rooming house and damaged two others, drove twenty University of Missouri students from their beds early today into near zero temperatures, scantily attired. No one was injured.

FLOOD LESS MENACING

INDIANAPOLIS, Ind., Jan. 24 (AP)—Anxiety over the flood situation at Griffin, Ind., which has been menaced by the flood waters of the Wabash river, was ended today when word came that Illinois Central Railroad telegraph wires that the town is in no danger.



No More OLD Cars

NO car need show the marks of a hard life. For we have here a splendid body service that keeps nicks, dents and scratches from ruining the outer appearance of your car. It gets every bump and keeps cars sparkling new. No smash too big or small—we can fix it. Save money on new parts this way. Try it today!

BILL BUNCH GARAGE

Auto Cowcatchers May Be Required

LONDON (AP)—A cow catcher attached to the front of all motor vehicles is the latest device being tested by the ministry of transport in an effort to reduce the growing toll of fatal street accidents in Great Britain. Deaths average 15 a day.

The new safeguard is fitted to cover the front wheels of cars, much like a cow-catcher on a train, and is designed to carry the car's weight along the road. High pressure hose of the guard is fitted with a sponge-like material, and at the bottom, a rubber fender prevents legs of arms from getting under the wheels.

Tests by the ministry of transport included long hours with a dummy figure that was thrown into the path of a fast moving motor truck from all conceivable angles. The dummy was not once run over.

DRIVE PRESIDENT ONE ON 'BLACK MARIA' NOW

COLUMBUS, Ga. (AP)—Look, less kids who juggle stars in the "Black Maria" here may have whatever satisfaction there is in knowing that their driver once was chauffeur to a president of the United States.

A. J. Pearson, who heads the city patrol wagon, was the private chauffeur of William Howard Taft during 22 months of his term as president.

Pearson drove Taft's car during a visit to Columbus and on impressed him by his careful driving that after entering the White House the president offered him the chauffeur's post.

COMMITTEE SECURE

ST. LOUIS, Jan. 24 (AP)—Miss Heston Greer, 45, heir to one third of the \$444,000 estate of her father, Henry Greer, commission merchant, plunged to her death early today from a window on her sixth floor room at the Forest Park hotel.

Employees at the hotel, where she had resided for three years, said the woman had been in ill health for some time.

TAKE NO CHANCES

Have Your Lights Adjusted
Your generator inspected & oiled
Your Battery Tested

PLAY IT SAFE

Willard
TRADE MARK BATTERIES
Service Batteries

Automotive Electric Co.
213 Greenwood Phone M. 520
Across from L. W. Weeks, Chrysler dealer.

NARCOTIC VACCINE FOUND IN FRANCE

PARIS (AP)—Experiments in attempting to release craving for narcotics by hypodermic injections of substance taken from the drug addict are described in the Academy of Medicine, Paris, by Dr. Medin.

He says he prepares a serum from reactions taking place near the spot where a hypodermic drug needle pierces the skin.

COAL AND WATER POWER IN CLOSE UTILITY RACE

NEW YORK (AP)—Steam power will not be supplanted by hydro-electric power, says a report of William W. Traft of Jackson, Mich., to the American Society of Mechanical Engineers.

Instead, he says a power system combining both steam and hydro-electric plants can generate power more cheaply than either kind alone.

TRUST THE GUY

"What we want is a candidate who isn't too radical nor yet too conservative, in short, a middle-of-the-road man."

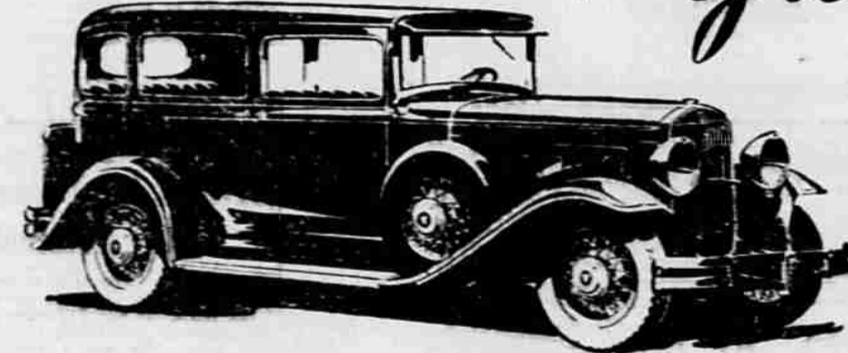
That language is the man to nominate. He's been a best driver for years.—Boston Herald.

Two Entirely New Cars

HUDSON'S

Great

IN TEN BODY TYPES, AND AT NO EXTRA COST, A WIDE VARIETY OF COLORS TO SUIT YOUR OWN GOOD TASTE.



... a fine—fast—powerful Eight

We count this our greatest achievement. From front end to tail light it is a new design. In appearance and finish it is commandingly beautiful. And in smoothness it surpasses anything we know.

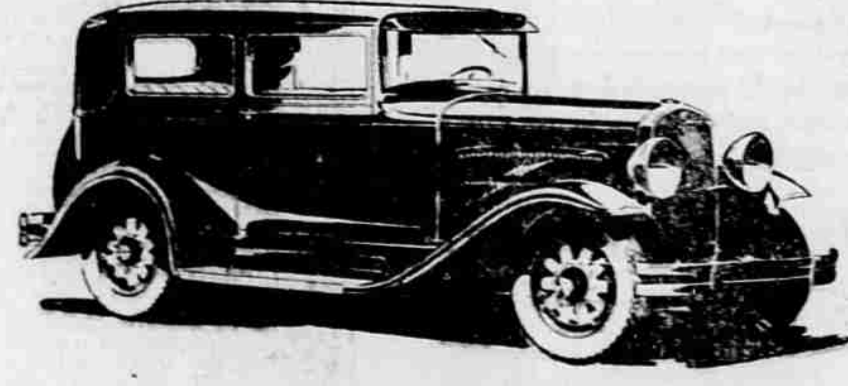
It outranks anything we have ever done in design, performance or value.

The roadability and riding ease are not excelled by any car at any price. And the price at which it sells questions the wisdom of ever paying more for any car.

and

ESSEX

the Challenger



with even faster speed . . . with greater power . . . with quicker get-away . . . also challenges in good looks—in real values—in reliability and in price . . .

Its challenge is distinctive and unusual in those fine qualities which owners prize most highly. In appearance it is a completely changed and modern car. The bodies are longer, wider, lower. It challenges your interest with big car spaciousness and comfort.

The motor is larger and smoother. The performance range is notably increased. It gets quickly away at the stop, is strong on the hills and swift on the straight-away.

You won't be content with any less comfortable or less good looking or less distinctive car. It is a thoroughbred automobile and it challenges your attention because of its price.

In 4 Body Types, and at equivalent cost, a wide variety of colors to suit your individual taste.



New Chrysler "777" Royal Coach, \$1725 (Special Equipment Extra)

PERFORMANCE that belongs to Chrysler ALONE!

AFTER all is said and done, performance is the true index of a motor car—a car's one way of proving how good it is in basic engineering. And today, by all tests, all standards and all comparisons, the new Multi-Range Chryslers, with four-speed transmission and gear shift, are first among all motor cars in performance ability under all conditions.

This is not a mere claim, but a fact; not something you have to take on anybody's say-so, but something you can easily verify. Demonstration and comparison furnish the proof. One ride in a new Multi-Range Chrysler will prove why ownership of a Chrysler inspires a pride all its own.

FEATURES: LARGE AND POWERFUL ENGINES . . . 7-BEARING COUNTER-SHAFT . . . MULTI-RANGE FOUR-SPEED TRANSMISSION AND GEAR SHIFT . . . RUBBER SPRING SHOCKLES . . . CHRYSLER WEATHER-PROOF FOUR-WHEEL HYDRAULIC BRAKES . . . LARGER, ROOMIER BODIES OF DREADNOUGHT CONSTRUCTION . . . ADJUSTABLE FRONT SEATS . . . METALWARE BY CARRIER

MULTI-RANGE CHRYSLER

CHRYSLER INSPIRES A PRIDE ALL ITS OWN

L. W. WEEKS
Greenwood & Jefferson

BLUE MOUNTAIN GARAGE
Opposite Post Office
M. A. Harrison, Mgr.