

Ward's JANUARY CLEARANCE BEGINS TOMORROW



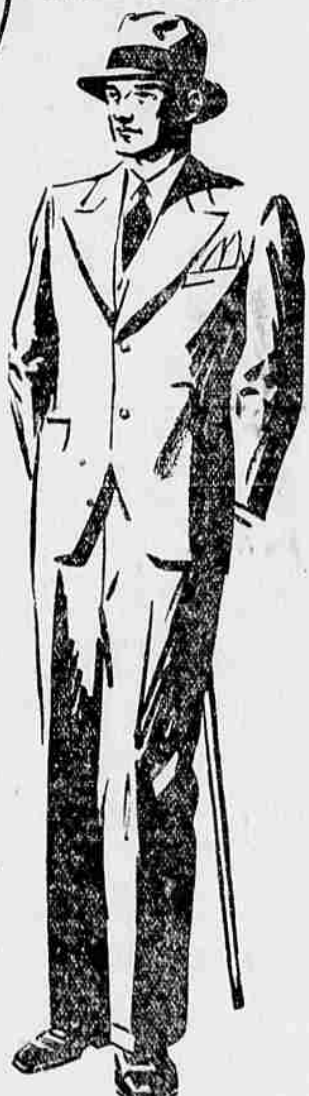
Special Lot of MEN'S SUITS AND OVERCOATS

EVERY SUIT WITH
2 PAIRS OF PANTS

Formerly
\$19.00 to \$34.00

NOW
\$12.95 to \$23.00

1/3 OFF



VALUES . . . too big to be matched anywhere else this season! Burly, warm overcoats in the style you want. Man-O-Fashion Suits, Satisfashion Suits tailored in styles ranging from the popular two-button single breasted model to smart double breasted models. Handsome woolen fabrics of the finer qualities that STAY good looking after months of wear.

Shop
Early
Quantities
Limited

BUY NOW
SAVE 25%
ON MEN'S SUITS & OVERCOATS



You hard-to-please fellows . . . Here's the group for you! The style your good taste demands at savings your good sense won't let you pass up. Heavy weights, mid-weights, all warm, all smart. Top coats in the styles and fabrics that are always right.

And Suits! Get this . . . Hand Tailored Suits with the custom tailored look! Man-O-Fashion Suits, Satisfashion Suits. You'll say they're what you've waited for. Wait no longer! Come in today!

Boys, Your Overcoats! Parents, Your Price!

Overcoats with the manly smartness every boy wants — Chinchillas, Boucles, Fleeces, Worsteds . . . warm as good woollens can be and with the stamina that will easily stand two or three seasons of wear. And at such low prices you parents can easily afford the GOOD overcoat you want your boy to have.

Boys' Suits—Collegiate Styles

Long trouser suits, knicker suits and suits with one pair of long trousers and one pair of knickers. The campus tailoring boys in school prefer. Rich, all wool fabrics that will stand the strain of school yard play. Now is an excellent time to buy. The styles will be good next Spring and think of the savings you make!

1/3 off

CRINCHILLAS
BOUCLES
FLEECES
WORSTEDS

1/4 off

Long Trouser Suits
Knickeer Suits
Suits with Long
Trousers and
Knickeers

MONTGOMERY WARD & Co.
1101-3 Washington Ave. Phone 18 La Grande, Ore.

Year End VALUES

All Wool
Flannel Shirt
\$2.97

Western Inc.
Men's Wear.

COLD WAVE DESCENDS ON EAST OREGON

(Continued from Page One)

blizzard-like proportions swept over the Cascade mountains and tore down miles of telephone and telegraph wires. Interrupted rail and highway traffic and deposited a heavy mantle of snow in the highlands. Reports indicated the district between Glendale and Grants Pass, Ore., received the brunt of the storm. Rain fell in Portland.

In Seattle, snow started falling late yesterday but ceased late at night after coating the streets with a two inch blanket. Automobiles had difficulty but there was no interference with street railway travel.

A trace of snow fell in Tacoma, while communities north and northeast of here reported between three and four inches. Spokane and vicinity received a trace of snow while the mountains eastward received an inch of snow.

Communications Disrupted

Telegraphic communication between Eastern Canada and Vancouver, B. C., was disrupted by a sleet, snow and rain storm in Fraser valley, east of Vancouver.

Except in the extreme north portion and in the Sierra Nevada, California was promised generally fair and colder weather. Local frosts in the San Joaquin, Sacramento and Santa Clara valleys were predicted but it was not believed possible that they would be necessary to protect orchards. The weather bureau expected unsettled conditions to prevail in extreme Northern California and predicted more snow for the Sierra Nevada where temperatures were falling. Southern California, which received its first wetting in four months recorded precipitation ranging from one half to 1.31 inches. The rainstorm moved eastward during the night, however, and sunny skies again were promised by the weather bureau. The main extension as far south as the mountain summits west of Imperial valley, giving San Diego one half inch of precipitation.

Snow Flows in Use

At Truckee, Cal., snow flows were put into use as the blizzard which deposited more than a foot of snow, continued unabated.

In the Yosemite valley, the first snow of the season fell, closing roads but marking the opening of winter sports.

All roads in the vicinity of Tahoe City, Cal., were blocked by heavy snow. Sixteen inches of snow fell overnight.

Weather observers said today the state would be treated to a taste of real winter with the mercury plunging lower and a clear cold day tomorrow.

Baker reported it clear and cold today, but no snow.

At Pendleton the mercury took a sudden drop during the night and went down to 19 degrees above zero. About three quarters of an inch of snow fell yesterday but did not remain on the ground. Today it was clear and cold.

A light flurry of snow covered the ground at Eugene today. Snow fell throughout Sunday on McKenzie Pass. About two feet of snow lay on the summit.

PORTLAND CASH

PORTLAND, Ore., Jan. 6 (AP) — Cash wheat: Big Bend bluestem, hard white \$3.57. Soft white \$3.26. Western white \$3.26. Hard winter \$3.24. Northern spring \$3.24. Western red \$3.24. Duro No. 2-28 H. white \$3.50. Today's car receipts: wheat 67, flour 15, corn 11, hay 8.

NEW YORK FRUIT

NEW YORK, Jan. 6 (AP) — Evaporated apples quiet: choice 12 1/2; fancy 11 1/2; primes steady California 8 1/2; Oregon 9 1/2 @ 17. Apples steady: standard 13 1/2; 15; choice 17 1/2 @ 18 1/2; extra choice 19 @ 22. Prunes steady: standard 14 1/2 @ 15; choice 15 @ 16 1/2; extra choice 16 @ 18 1/2.

SUGAR AND FLOUR

PORTLAND, Ore., Jan. 6 (AP) — Cane sugar (sacked basis) steady: cane, fruit or berry, \$5.49 per cwt.; beet sugar, \$5.25 cwt. Flour: (city delivery prices) steady: family patents, 48c, \$8.00; whole wheat, 45c, \$7.10; Graham, \$7.00; bakers' hard wheat, \$6.87; bakers' bluestem patents, \$6.87; pastry flour 49c, \$7.50.

SNOW FLURRY AT SALEM

SALEM, Ore., Jan. 6 (AP) — A light skiff of snow fell in Salem around midnight but had disappeared by morning. Surrounding hills are thinly covered with snow today. Temperature was 25.

Dakota Bird Life Passing

Bird life is diminishing on the rolling prairies of the Dakotas, since the homes of great herds of bison.

MARKET NEWS OF THE DAY

CHICAGO WHEAT			
	Open	High	Low
Mar.	1.29	1.30 1/2	1.28 1/2
May	1.33	1.34	1.32 1/2
July	1.33 1/2	1.34 1/2	1.33 1/2

PORTLAND WHEAT			
	Open	High	Low
Mar.	1.28	1.28 1/2	1.28
May	1.31 1/2	1.31 1/2	1.31 1/2
July	1.31	1.31	1.31

WHEAT MARKETS ARE UNSETTLED

Both Domestic and Export Demand for Wheat in Moderate Volume.

WASHINGTON, Jan. 6 — The wheat market was rather unsettled during the first week of the new year, with corn and other food grains barely steady, according to the Weekly Grain Market Review of the United States bureau of Agricultural Economics. Both domestic and export demand for wheat continued of only moderate volume although export sales were reported larger than for some time. The movement of corn increased slightly but the moisture content is still unusually heavy and practically none of the arrivals in grading higher than No. 5. Discounts on lower grades have widened. The market for both oats and barley held fairly steady, influenced by the weakness in corn. The limited offerings of rye were being readily taken by domestic mills while some increases in crusher demand for flat strengthened the market for that commodity.

There were no new developments of importance in the general wheat market situation. Relatively large offerings of native wheats continued to restrict European demand for foreign grains. France is reported to have sold some wheat to England during the week, while shipments of about 20,000 bushels were reported sold to Italy from Bessarabia, a former Russian province. Canadian wheat is also being offered to other European countries for shipment up into the spring months. Argentine offerings, on the other hand, have slackened although Argentine wheat is still underselling United States wheat in English markets. India is expected to be in the market for wheat before their new crop is available and less wheat remains for export in Australia than at this time last season. North American market news, however, are about as follows: The large supply in store a year ago, so that the amount of wheat available for export in the principal surplus producing countries between January 1 and July 1 is about as large as exports from these countries during the corresponding periods of other recent years, with the exception of last season when the world exports were unusually large because of relatively low wheat prices and the short European crop of feed grains. With this relationship existing between prospective demand and apparent supplies attention is being drawn to the new winter wheat crop prospects. The condition of the crop in the United States at the first of January remains generally good, particularly in the Southern Great plains. Conditions in Kansas are reported the best since 1918. The most critical period of the winter, however, is during the next 60 to 90 days, when adequate freezing and thawing frequently causes serious damage.

Domestic cash wheat markets held generally steady during the week although demand was only moderately active. Receipts of winter wheat at Kansas City were larger than during the previous week and on some days a few samples had to be carried over.

Soft winter wheat prices held steady at most markets although milling demand was only moderately active. Country offerings increased slightly at St. Louis but the expected increase in mill demand did not materialize.

Spring wheat markets had a firm tone with receipts very light and mill demand fairly active.

Pacific coast markets held steady and prices remained practically unchanged. Holiday dullness continued to prevail at San Francisco and trade in both milling and feed wheat was of limited volume. Continued drought in the wheat-growing areas of the San Joaquin valley is restricting country offerings and giving the market a firm tone in that area. Flour stocks are

J. C. Penney Co.

108 Depot St. La Grande, Ore.

Night Shirts Of Amoskeag

Warm flannel nightshirts that are cut extra full, 54 inches long. Come in assorted stripe patterns. Excellent values at

98c

reported to be relatively small and this is expected to cause some increase in the demand for milling wheat shortly. Some Washington and Oregon wheat is being shipped in for mixing purposes, but quotations on this wheat are too high to compete to any great extent with local wheats. No. 1 hard white and 2 soft white were quoted at San Francisco Jan. 3 at \$2.25-\$2.25 per 100, while heavier dockage wheat was selling at \$2.20-\$2.25. Good milling wheat was quoted at Los Angeles at \$2.30-\$2.25 with feed wheat selling at \$2.25-\$2.30. Receipts in that market totaled only about 40 cars but were ample to meet the local trade demand. A large percentage of the arrivals at Los Angeles were from Utah and Idaho and these sold in competition with the local wheat. No. 5 soft white wheat from Utah and Idaho was being offered 6 c. in Los Angeles at \$2.25 per 100.

Pacific northwestern wheat markets were firm, particularly on soft and western white and red wheats, for which there was an improved export inquiry. Export sales at Portland during the week were reported at approximately 1,500,000 bushels, principally to the United Kingdom and the continent. This was principally soft and western white wheat with a small amount of western red. Bids from the Orient were still below current quotations and no sales were reported. Milling demand was rather dull at both Portland and Seattle, but prices held steady and crushers were reported to have disposed of around 1,000,000 bushels during the last few days of December. At the close of the market Jan. 3, No. 1 Big Bend bluestem hard white was quoted at Portland and Seattle at \$1.35. No. 1 soft and western white was quoted at Portland at \$1.25 and at Seattle at \$1.27 1/2. No. 1 hard winter, northern spring and western red were quoted at Portland at \$1.26 per bushel. No. 1 dark northern spring from Montana with 1 1/2 per cent protein was quoted at Seattle in bulk at \$1.27, while No. 1 dark hard winter of 14 per cent protein from Washington was quoted sacked at \$1.20 per bushel.

EGG, BUTTER MARKET WEAK; STOCKS LARGE

PORTLAND, Ore., Jan. 6 (AP) — The old law of supply and demand, with supply dominant in this instance, is raising havoc with egg and butter prices.

This applies especially to butter (storage stocks of which are so large that the prevailing quotations are the lowest experienced at this time of the year for a decade. The egg market is slightly better off than the butter market, but is still unusually weak. Two more cents were cut off egg prices today bringing the price of fresh extras to retailers to 28c and the medium grades to 27c.

The hop market is reported to be demoralized more than at any period for some time. With 65,000 or 70,000 bags of the old product still unsold, prices ranging from 5c for the poorest to 11 1/2 for the best were quoted in most quarters. The hop outlook was declared to be anything but bright.

Always the Lowest Prices in Town

Work shoes, heavy stock, Maffson last, composition soles, strong and durable \$2.95

King Shirts, heavy all wool Oregon flannel, double sleeves and back "Boss of the Road" \$5.95

Men's heavy all wool blazers of the well known Neustadter make, in attractive stripes and plaids \$8.95

Men's heavy cotton ribbed union suits, wet made and good fitting, regular \$1.50 value 98c

Heavy all wool men in grey and white, special 2 pair for \$1.00

Rubber Footwear for the Whole Family

Men's dress rubbers 95c

Women's storm rubbers 60c

Boys' & Children's Rubbers 65c to 75c

Women's Galoshes, Rubber or cloth \$1.70 & \$1.89

Men's 4-buckle overshoes \$2.05

NEW YORK STORE

Chinese Product: The word "kibin" is Chinese. This important clay was found on a group of hills called Kao Ling which meant high hills.

Wooden Worry: Don't worry if your job is small and your rewards are few. Remember that the mighty oak was once a acorn. —Boston Transcript.

Easily Satisfied: Any man who comes up to his own idea of greatness must always have had a very low standard of greatness. —Washington Star.

Not Acknowledged: News that the onion is a member of the lily family certainly didn't come from the lily. —Arkansas Gazette.

The Thrill Quest: Modern life consists of seeking more dangers than we avoid. —Sun and Leather Reporter.

Know When to "No": What you don't know may not hurt you, but what you don't know frequently does. —Arkansas Gazette.

Actions Reveal Thoughts: I have always thought the actions of men the best interpreters of their thoughts. —Exchange.

Anger Shows Weakness: The angry person in a controversy is the one most likely to be in the wrong. —Tribune.

Dakota Bird Life Passing: Bird life is diminishing on the rolling prairies of the Dakotas, since the homes of great herds of bison.