

# LaGrande Evening Observer

(Incorporated)  
An Independent Newspaper  
**RANK B. APPELBY**, Editor and Publisher  
**HARVEY F. MATTHEWS**, Business Manager  
Published evenings, except Sunday, at 1416 Adams Avenue, Grande, Oregon. The Observer-Star published every Friday. Entered at the Postoffice at La Grande, Oregon, as Second Class Mail Matter under act of March 2, 1879.  
OFFICIAL PAPER OF UNION COUNTY AND THE CITY OF LA GRANDE

MEMBER OF ASSOCIATED PRESS  
Associated Press is exclusively entitled to use for publication all news dispatches credited to it or not otherwise credited thereto in this paper, and also the local news herein also are used.  
National Advertising Representative  
**M. C. MOGENSEN & CO., Inc.**  
San Francisco, Los Angeles, Seattle, Portland, Chicago, Detroit, New York

SUBSCRIPTION RATES  
By Carrier  
Daily, per month in advance..... 75c  
Daily, six months in advance..... \$4.50  
Daily, single copy..... 5c  
By Mail  
Daily, per month in advance..... 50c  
Daily, per six months in advance..... \$2.50  
Daily, per year in advance..... \$5.00  
Weekly Observer-Star, per year..... \$2.00

ADVERTISING RATES  
Display, foreign, per column inch..... 42c  
Display, local, per column inch..... 40c  
Time contract prices on application.

THE PROMISE FULFILLED—He hath filled the hungry with good things; and the rich he hath sent empty away. He hath holden his servant Israel in remembrance of his mercy; As he spake to our fathers, to Abraham, and to his seed forever.—Luke 1:53, 54.

A federal liquor agent gets 50 years in the pen for shooting a farmer during a booze raid. That should make prohibition agents a bit more careful about the use of guns and federal authority.

The question of a tariff on shingles has revolved into a tussle between congressmen from the northwest and those from the rest of the country. Legislators who live in states where lumber is not an important industry, and especially those where there is no serious competition with Canadian products produced with cheap oriental labor, favor putting shingles on the free list. That's one reason why a perfect and thoroughly equitable tariff is never possible. Each state has some pet that rightly needs protection. The trouble is in selling other states on the justice of their contention. The result is that industries located in the east—heavily populated areas with a greater community of interest—get the favor of the majority. The rest of the country is fortunate if it gets an even break.

There are lots of things about the railroad business that an ordinary layman cannot understand, and a decision on the proposed extension of the Great Northern south from Klamath Falls to connect with the Western Pacific's line to San Francisco is a matter for experts and the interstate commerce commission. It will be the most important rail fight in many years—especially important for the northwest. Now there is no direct outlet beyond Portland from the San Francisco bay district. Would the public interest be well served by allowing the construction of this connecting link and giving a northern road an entrance to the bay district? The answer to that question will be the deciding factor. If the decision is against the Great Northern, we believe it only a question of time until they will accomplish their desire to break into San Francisco by auto truck lines feeding north. Freight by truck is anticipated more and more by the railroads. Wider highways, double-track highways in the next 10 years will facilitate short haul freighting with trucks by rail companies. There is no stopping transportation development.

### FOR WOMEN

Strange, perhaps, but business is conducted mostly for women in this era of many paradoxes. It wasn't so long ago that the majority of the stores traded with men, that advertisements were written to attract men and that the manufacturers were busy supplying the needs of men.

The new woman has three exclusive ladies' wear shops to one men's shop. Every man knows how the bobbed hair craze created "bobber" shops and beauty parlors for women only in sufficient numbers and spaciousness to completely overshadow the male tonsorial institutions. Automobile manufacturers are accentuating the appointments for women afforded by their models, and where they formerly advertised that their motors were accessible to men drivers they now herald the fact that the operating levers and pedals are easily accessible to women. Department stores cater almost exclusively to feminine shoppers, and the cosmetic counters now consume the greater part of the floor space in the corner drug store.

A few years ago womanhood had to be content with one or two small and poorly edited magazines, for the large majority of the weekly and monthly periodicals were published for men. A census taken at any news stand today would show magazines for women predominating. The modern woman's magazine is larger and carries more advertising than the more popular men's magazine and while there are many periodicals strictly for women there are few strictly men's publications. The office girls are even making encroachments on man's traditional morning newspaper, as the advertisements and departments bear witness.

This metamorphosis has not been the result of granting the vote to women. The ballot for women came with the rest of the revolution. The greatest factor in the transformation was the increase, during the war and since, in the number of financially independent women. More women working meant more women to buy. Better wages for husbands have given wives more money to spend and more time to shop. And, most important of all, men realize that their wives can usually spend most of the family income with greater thrift, greater intelligence than they can themselves.

### Abe Martin



"I didn't realize what was up till our police dog rushed in the house and crawled under the bed," said Mrs. Gabe Crow, in telling of her experience with burglars last night. Say what you please about Al Capone, he comes in mighty handy when there's no other news.

### THE GARDEN

#### SOW EARLY SPINACH THIS FALL

There is not a great deal to be done in the vegetable garden in the way of fall planting with the exception of asparagus and rhubarb for permanent plantings. The bulk of the work is cleaning up, possibly spading, and leaving the soil in the best condition to go to work in the spring.  
One vegetable, however, may be sown this fall, late, with excellent results and this is spinach. Sow the seed in rows and give it a mulch of straw, hay or leaves to prevent it being washed by the heavy fall rains and the spinach patch for next spring is started. Spinach is an early season crop and must be grown in the cool days of spring in the home garden. With the first warm weather, it spins up to seed in a hurry, even the best of the newer types which do not show as much seedling speed as the old-time varieties.

There is no use basting with the old-fashioned small leaved spinach when the now heavy, crinkled leaved varieties are so much finer and give so much better yield per plant. Danish gardening experts have done wonders in developing spinach into heavy leaved, heart shaped sorts which are vastly superior and much more economical to grow. Spinach has become one of the most popular market crops and we can now start in the fall with fresh spinach from the market and have it all winter until the fresh supply in our own gardens is ready.

The one requisite for growing good spinach is rich soil, manure and cool weather. Feed like the spinach bed liberally with stable manure if it can be procured and if not with commercial fertilizers. Do not sow the seed too thick. Good gardeners now know that there is more waste in planting spinach so thick that the plants can't possibly develop good leaves than there is in planting. Be prepared to thin it out to two inches apart, and then watch the leaves develop. With the heavier leaved kinds, the crop can be prolonged by cutting the leaves and leaving the plant to produce more. Usually it is the custom to pull up the entire plant so that it produces only a single crop. Sow spinach the last of October or early November so the seed will not germinate until spring. It will then be the first thing up in the garden and on its way before the soil has dried out sufficiently to be worked for spring planting.

### MERCURY SLUMPS TO NEW MINIMUM

(Continued from Page 1)

Alfred Salazar, 37, was the only man who was only slightly above zero, victim of the storm so far as known. He and two companions set out last week to gather wood in the Sanger de Cristo range, southwest of Pueblo, Colo. A sudden snowstorm caused a team used by the boys to break away, leaving the youths to foot their way to heaven. Salazar died in the arms of one of his companions.

### SNOW ON MCKENZIE PASS

EUGENE, Ore., Nov. 12 (AP)—Eight inches of snow fell on the McKenzie Pass and a warning was posted today by state highway officials for motorists in the region to use chains as the snow melts during afternoons and causes the road to become slippery.

The Cascade mountains are blanketed with snow.

### PENDLETON CHILLY

PENDLETON, Ore., Nov. 12 (AP)—Pendleton had the coldest November night in five years last night when the mercury slipped to 17 degrees above. The sky has remained clear since Monday.

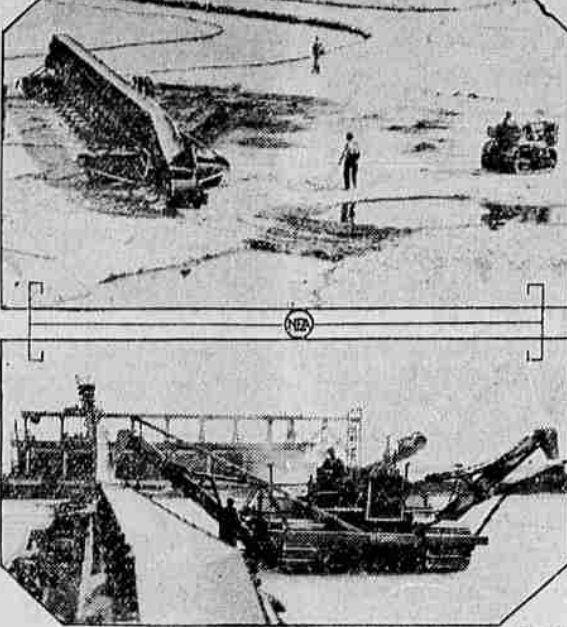
### COLD AT SALEM

SALEM, Ore., Nov. 12 (AP)—Salem experienced the coldest weather of the fall season so far when the mercury dropped to 25 degrees early Wednesday morning. The maximum temperature Tuesday was 48 degrees.

### Game Commission Reduces Expenses

PORTLAND, Ore., Nov. 12 (AP)—The Oregon state game commission shaved six thousand dollars a month for the next four months from its funds yesterday after

### Harvest California Salt Crop



Now they "harvest" salt instead of mining it. These pictures show the first "crop" of the 1500-acre, \$7,000,000 salt farm at Alviso, Calif., near San Francisco, being harvested. Each acre produced from three to five inches of salt, an inch yielding approximately 100 tons. Above is a general view of the salt farm; below, one of the huge harvesting machines pouring salt on a conveyor belt.

### Resigns Post as Envoy to Canada

WASHINGTON, Nov. 12 (AP)—William Phillips has resigned as minister to Canada.  
Mr. Phillips, who is a career man and one of the leading American diplomatic plans to quit the diplomatic service probably late next month and settle with his family in New England.  
President Hoover accepted the resignation with great reluctance and sought to induce Mr. Phillips to remain in the public service.

### MENUS

By Sister Mary  
Many mothers who realize that liver is a valuable food are in a quandary as to the best method of cooking it for small children.

Children as young as two years of age may be given properly cooked liver, but the dish as it appears on the average family table is not suitable for the child or preschool age.

Fresh calf, beef and chicken liver may be used. The liver of the Sunday chicken will be more than enough to supply the day's allowance of meat for a three-year-old child.

When liver is first introduced into the two-year-old's diet, not more than one teaspoonful should be given. This can be gradually increased until one tablespoonful is allowed for a meal. The liver is best when it is served in a puree.

The "Food Value" of Liver  
Liver is especially valuable for its iron and vitamin content. As the abundance of leafy green vegetables decrease, other foods rich in iron become more necessary. Iron is essential for every blood cell and "raily" lips, but as calcium is needed to make bones and teeth.

It is best to boil liver for small children. After this first cooking, it is finely chopped or mashed and seasoned for serving in various ways.

Wipe one small slice of liver with a damp cloth. Cover with boiling water and simmer gently until tender. It will take about 15 minutes for calf or chicken liver and 20 to 25 minutes for beef liver. Drain and remove all coarse parts and membranes. Run through the fine knife of the food chopper or mash with a fork. When smooth and of a paste-like consistency, add a few grains of salt. This paste can be spread on strips of crisp toast or dry bread and used in place of grated, baked or fried egg yolk or beef juice at noon for two-year-old children. As they grow older, and grated raw vegetables are added to their list of foods, the liver paste can be combined with grated raw carrots, celery, onion, cabbage or lettuce and used as a sandwich filling with whole wheat bread.

The liver paste also can be added to soup or any hot mashed vegetable the child is allowed to eat. Children four years old will like a tiny patty made by shaping the paste in a flat cake and pan broiling it in a hot, ungreased frying pan.

Baked potatoes can be removed from the shells, mashed and seasoned. Line the shell with a little prepared potato, add a spoonful of liver paste and pile remaining potato lightly over liver. Return to oven long enough to heat thoroughly and serve with mashed cooked carrot, crisp whole-wheat toast, milk, baked apple.

### DOLLEY ACQUITTED

LOS ANGELES, Nov. 12 (AP)—Harold Dolley, former federal prohibition agent, was acquitted today of charges of importing with a state's witness in the recent criminal assault trial of Alexander Panagos, multi-millionaire showman.

### ITCHING ENDS WHEN ZEMO TOUCHES SKIN

—Thousands say, it's wonderful the way soothing, cooling Zemo brings relief to skin which itches and burns. Even in most severe cases, itching disappears almost as soon as Zemo touches the tender and inflamed surface. To draw out local infection and help to clear away unsightly blemishes, we know of nothing better than invisible Zemo. Always keep this family antiseptic on hand. Use it freely. It's safe as can be seen, 50c and \$1.00. All dealers.

**FALK'S LA GRANDE STORE**  
Successors to N.K. WEST & CO.

**NEW LOW PRICES for FINE BLANKETS!**

FOR THESE CHILLY NIGHTS  
A New Cotton and Wool Mix at \$4.95



Golden fleece cotton and wool blanket in the popular 66x80 size. The new process of mercerizing this blanket gives it a soft feel of an all-wool blanket; has sateen-bound ends. A regular \$6 blanket value at—

**\$4.95**

**100% Wool Comforter \$6.45**  
A pure wool filled comforter covered with good quality challie in a 72x84 size. Comes in several colors. Weight 3 1/2 lbs.

**100% Wool Blanket \$8.50**  
The Rockingham—soft, fleecy wool in colors of tan, blue, rose, in 66x80 size double. An exceptional blanket value.

**New! Cotton Patch Work Quilt \$4.85**

"Modern" in all new patterns and colors, this real utility quilt comes in a number of color combinations and in the popular size of 72x90. Scalloped edges all around, closely quilted. A real value at—



**Double Cotton \$2.45**  
333—a double cotton blanket, size 66x76, in popular plaids of rose, blue, grey and yellow. Made of long fiber, soft cotton.

**No. 555 Blanket \$3.95**  
A convenient size double cotton blanket in plaid patterns of tan, rose, lavender, blue and yellow, in 70x80 size. A blanket value at—

**New Two-Tone Pendleton Blanket \$13.50**

A new note in blankets this year, comes in two sizes—the 72x84 at \$14.50—the 60x84 size is quoted below. Colors of coral-buff, lavender-peach, green-lavender, blue-old rose—beautifully bound satin edges—at



**The "Pendleton" \$13.50**  
A beautiful 2-inch alternating plaid blanket in 60x84 size, with nicely bound satin ends. Comes in rose and white, and blue and white.

**The "Yellowstone" \$11.00**  
In plain white with four-inch stripes across each end, in a 66x80 size; also in tan with brown stripes, felt bound ends.

**An Exceptional Pillow Value at \$1.50**

A full size 20x26, 8-oz. sateen-covered bed pillow filled with curled hen and turkey feathers; all new materials that comply with Oregon laws. A real value, each—

**\$1.50**

murder committed in Missouri. McDonald has retained Mannix as his attorney.

**Blue Mountain Milk**

DRINK IT and PLENTY OF IT

Day after day, the whole year round, in our home this good milk is found!

**Blue Mountain Creamery**  
PHONE MAIN 60  
AT YOUR STORE OR DELIVERED TO YOUR DOOR

**It's a Health Drink that builds up your Health and Strength**

**Vitality in liquid form, Drink More of it each day.**

**Same Price FOR OVER 38 YEARS**

**25 ounces for 25¢**

**KC BAKING POWDER**

Guaranteed Pure Use KC for fine texture and large volume in your bakings

Millions of pounds used by our Government

When In Portland for the Pacific International Stock Show

Discriminating Union County People will choose

The **Heathman Hotels**

THE HEATHMAN, NEW HEATHMAN

NEW... LUXURIOUS... COURTEOUS... MODERATE IN RATES...

The New Heathman Coffee Shop is one of the most popular eating places in all Portland. You'll like it, too!

**Heathman Hotels**

Broadway and Salmon Park and Salmon

G. E. Heathman, Owner-Mgr.  
Geo. M. King, C. C. Pierce, Asst. Mgrs.

**Blue Mountain Milk**

DRINK IT and PLENTY OF IT

Day after day, the whole year round, in our home this good milk is found!

**Blue Mountain Creamery**  
PHONE MAIN 60  
AT YOUR STORE OR DELIVERED TO YOUR DOOR

**It's a Health Drink that builds up your Health and Strength**

**Vitality in liquid form, Drink More of it each day.**