

RUST RESISTANCE FIND ENCOURAGING

Canadian Discovery Brings Hope to American Wheat Growers.

By Frank I. Weller (Associated Press Farm Editor) WASHINGTON (AP)—Dr. J. H. Grisdale, deputy minister of the Canadian department of agriculture, is quoted in Ottawa as announcing the development of wheats which can resist rust.

Seed will not be available in large quantities for two or three years, but it is expected that eventually the new wheat will save Canadian farmers millions of dollars every year.

The announcement is of deep interest to wheat specialists in the United States, where black stem rust causes probably greater loss to the spring wheat crop than all other diseases combined.

The federal plant-disease survey estimates that stem rust has caused losses of spring and winter wheat during recent years ranging from 665,000 bushels in 1918 to about 180,000,000 in 1916, with an average annual loss of nearly 35,000,000 bushels in the 13 north-central states.

Efforts to halt the tremendous destruction include eradication of the common barberry, host plant of black stem rust; the growing of rust-resistant varieties; and the use of improved methods of field culture.

Production of varieties resistant to rust is a complex problem, since the disease consists of many biologic forms which differ in their pathogenicity for certain varieties of wheat.

That explains why the same variety may be resistant when grown in one locality and susceptible when grown in another, or why a variety may be resistant in the same locality in one year and susceptible in the next.

It is obvious, plant pathologists say, that if wheat is to be resistant in the field it must be resistant to all biologic forms present in the locality in which it is to be grown. Whether the Canadians have accomplished this feat remains to be determined. Until that time there is a question whether the wheat, although resistant in Canada's spring wheat provinces, would be resistant in the United States.

The United States department of agriculture has had varied success in developing resistance in pure strains and in crosses but has been unable to find a wheat uniformly resistant in all regions in all seasons. Twenty-one biologic forms of rust have been found in the up-

per half of the Mississippi valley. A winter wheat, Kanred, is resistant to two of these forms and immune from 11.

One of the chief difficulties is to find a hardy wheat that at the same time is prolific and of high protein content. Kola apparently is highly resistant in the spring wheat areas, but its straw is weak.

Lincoln's Buggy Sells For \$3.25

GALESBURG, Ill., (AP)—The buggy used by Abraham Lincoln in his campaign in 1858 brought only \$3.25 when it was put up for sale.

H. K. Tabler, a farmer near Plymouth, Ill., bought it and placed it on exhibition in the courthouse here. Recently he refused a \$500 offer.

The buggy was a very fancy article in its day and was 30 years old when Lincoln used it. No two nuts are alike, all being hand-made, and the axle is wooden.

Pigment Denied Responsibility For Skin Color

BOSTON, (AP)—The differing skin colors of various races, and the coloring of individuals, depends largely upon other factors than pigment.

How this fact has been ascertained by photography and spectroscopic analysis was described to the Thirteenth International Physiological congress at Harvard Medical school by Dr. Charles Sheard and Dr. Louis A. Brunsting of Rochester, Minn.

"They find that the dominant skin color is spectral yellow. 'Pigment,' says their report, 'is not a racial characteristic. Pigment does not disturb the hue or purity of the color of the skin, but tends to lower the values of relative luminosity.'

"The blood of the superficial capillaries exerts a marked influence on the reflection of light and therefore on the color of the skin. An abundance of oxygenated blood near the surface tends to shift the dominant wavelength of reflected light toward the red end of the spectrum; an abundance of blood of the veins produces a shifting of the dominant wavelength toward the blue end of the spectrum."

Catty A somewhat witted beauty was complaining that she had not been made queen of a certain apple blossom festival. Of course, this gave her rival an opportunity. "Never mind, dear. There's Prime week," she said soothingly.

Unearth Vault Beneath Capitol



Looks like someone was trying to undermine the government! Here's the entrance to an unexplained subterranean chamber, almost under the Capitol steps in Washington, discovered by workmen laying a pipe. There is no known record of the vault and no indication of what use it was put to. Fifty feet square, and three feet under ground, it is believed to have been intended for at least 50 years. A passageway to the Capitol basement had been sealed.

Governor's Term May Be Ended Before His Eligibility Is Settled

MADISON, Wis. (AP)—Political enemies of Gov. Walter J. Kohler, ever hit a long legal trail when they began an effort to bar him from office.

Charging he was disqualified through alleged violation of the corrupt practices act limiting personal expenditures. La Follette progressives began their effort to bar Kohler from the governor's chair before he was inaugurated.

Seven months have elapsed since he took office as the first non-progressive to gain election in a decade, and the legal battle, unprecedented in the state's history, has not passed the preliminary stage. In fact, the prospect looms that Governor Kohler's two-year term of office may have expired before the state courts finally give their decision on his right to hold the office.

Circuit Judge James C. Wickham will sit in Sheboygan, east of the county in which Walter Kohler has lived all his life, the first week in September and hear the arguments on the demurrer of the governor-plaintiff to the action commenced by the state at the instigation of four prominent members of the La Follette progressive faction. After that, the state supreme court will be called upon to decide whether the decision of Judge Wickham shall be upheld. If that is in favor of the governor, the case will end there. If not, then the way will be cleared to a trial on the merits of the case.

In its legal aspect, the unusual case hinges on whether the governor spent in excess of \$4,000 personally in his campaign to win the republican nomination for governor, and if so, whether he thereby was disqualified to hold the office to which he was elected last November. Contending that a great public

Locomotive Has 3 Power Sources

CHICAGO (AP)—Terminal rail-roading and switching may be revolutionized by a new type electric locomotive being tested here by the Illinois Central railroad.

The new locomotive, smokeless and noiseless, can be operated from any one of three sources of power—overhead wires, gas engines and storage batteries.

Operating under trolley wires the locomotive can haul from 40 to 50 cars, tests have shown. Using power generated by its own storage batteries it can be used for switching cars on tracks that do not carry electric current.

The locomotive is mounted on two trucks, each provided with two electric motors. Two engines use gasoline at the start, but when warmed up burn oil similar to that used in heating residences. The engines can be used for traction purposes or to charge the batteries. The batteries also can be charged from a generator which operates when the locomotive works under a trolley.

Changing from one source of power to another is merely a matter of pushing a button.

Wild Roses

In the Bible we read of roses. They are wild roses. They thrive in warm countries. "The wilderness shall blossom as the rose."

The new locomotive, smokeless and noiseless, can be operated from any one of three sources of power—overhead wires, gas engines and storage batteries.

Operating under trolley wires the locomotive can haul from 40 to 50 cars, tests have shown. Using power generated by its own storage batteries it can be used for switching cars on tracks that do not carry electric current.

The locomotive is mounted on two trucks, each provided with two electric motors. Two engines use gasoline at the start, but when warmed up burn oil similar to that used in heating residences. The engines can be used for traction purposes or to charge the batteries. The batteries also can be charged from a generator which operates when the locomotive works under a trolley.

Changing from one source of power to another is merely a matter of pushing a button.

Ice Cubes freeze faster in FRIGIDAIRE



JESSE ROSENBAUM New Foley Bldg. La Grande, Ore.

FRIGIDAIRE has always been powered and designed to freeze ice cubes quickly. And now you can freeze them even more quickly.

Each Frigidaire household model is equipped with the new Cold Control... a simple patented device that speeds the freezing of ice and desserts.

See Frigidaire. Then learn how little it costs. Find out how easily any model may be purchased on General Motors liberal terms. Come in today.

E. O. L. & P. CO. La Grande, Ore.

BACK TO SCHOOL

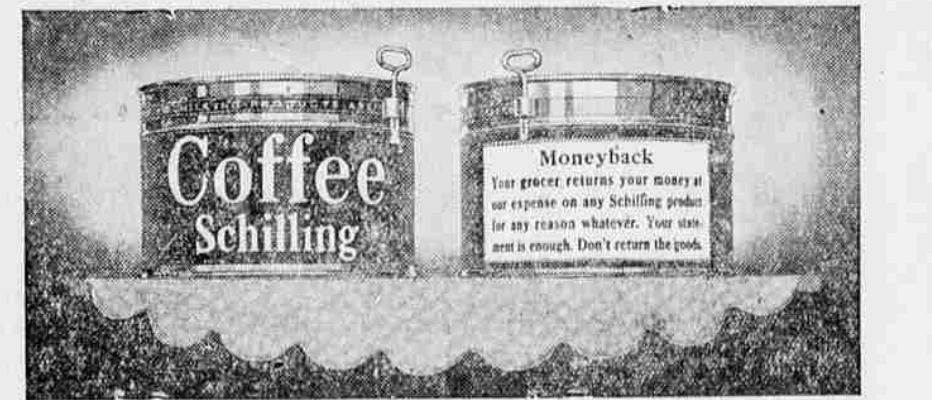


SELLING POWER

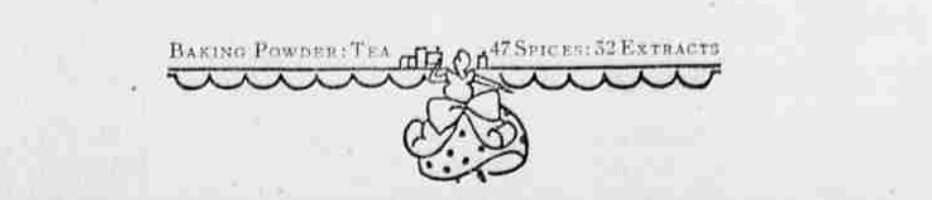
Buying power creates selling power. Mr. Max Sarlat, a member of this firm, lives in New York City, the largest market city on the North American continent. He specializes in buying merchandise and ranks as an expert in his line. With the valuable cooperation of Mr. Sarlat we are able to procure the best merchandise at the lowest prices possible and in turn offer it to you at prices that defy comparison.

- Boys' Suits: \$5.45 to \$9.85
Caps: 65c
Men's Dress Shoes: \$2.95 to \$5.95
Boys' Shirts: 49c to 69c
Men's Dress Shirts: 69c to \$1.25
Blazers: \$1.95
Women's Dresses: \$7.95 to \$12.95
Children's Footwear: \$1.75 to \$2.79
Men's Suits: \$10.95 to \$35.00
Women's Coats: \$16.50 to \$19.95
Boys' Shoes And Oxfords: \$1.95 to \$3.85
Novelty Pumps: \$2.89 to \$4.95

THIS is the one that never varies in fine flavor



Whether it is your 1st tin or your 61st - it never varies. A quality that never varies comes only from methods that never vary. That's why cheap coffee-making and fine coffee-making do not belong together - - for nothing is so contagious as "cheapness." There is one coffee roaster who specializes on fine coffee only. No 2nd or 3rd grades - no cheap blends - ever enter or leave the fragrant Schilling roasting rooms - - - the only place in America where that is true.



NEW YORK STORE

"Destroyers of High Prices."