

GRAIN MARKET IS FIRMER IN WEEK

Wheat Higher on Lighter Movement — Canadian Spring Yield 11 Bushels



COME...

ATTEND THIS STYLE EXHIBIT

SEE THE STYLES

THE BEST-DRESSED MEN WILL SPONSOR

Aug 21, 22 & 23

During this unusual Style Exhibit, a representative of the Society Brand Establishment, one of the oldest, largest and most reliable makers of fine clothes, will present their complete lines of new fall styles and custom tailoring woolsens.

This will be an outstanding exhibit of smart styles, fine quality and exceptional values.

Visitors may be measured by Society Brand's tailoring expert for either ready-to-wear or made-to-measure clothes. Come—be our guest.

Westenhaver Inc.

Men's Wear.

SOCIETY BRAND CLOTHES

WASHINGTON, Aug. 20 (Special)—Early declines in grain prices were more than offset by advances in the latter part of the week ending August 17, states the weekly grain market review of the United States bureau of agricultural economics. A decrease in the heavy movement of new crop winter wheat and poor threshing returns in the northwest and Canada were the principal strengthening factors in the wheat market, despite unusually heavy supplies in store at the principal markets. The market failed to display the same relative market strength as old wheat but prices averaged higher. Corn and oats were firmer, but barley declined with the heavy offerings meeting a dull inquiry. Flax was lower.

The official report of the Canadian spring wheat crop indicated a yield of around 11 bushels per acre which on the reported acreage plus the winter wheat crop would suggest a total output of only about 250,000,000 bushels of all wheat. The total wheat accounted for from the 1923 Canadian wheat crop is now officially placed at 567,000,000 bushels which included exports during the crop year of 355,000,000 bushels of wheat and flour and a carry-over into the current season of 104,000,000 bushels of grain. Statistics of the quality of the grain included in the carry-over are not complete but partial data of the quality of grain in store indicates that around one-third of these stocks are of No. 3 northern or better with around two-thirds falling into the lower grades. Last season the carry-over of old crop grain was placed at 75,000,000 bushels.

Europeans Harvesting. Harvesting in the European countries was progressing northward under generally favorable weather conditions. Offerings of new crop grains are liberal and the quality is good although yields are somewhat irregular in certain areas. The estimate of the Rumanian wheat crop has been revised downward and is now placed at 92,000,000 bushels compared with 115,000,000 bushels harvested a year ago. Trade estimates place the exportable surplus of wheat from the lower Danubian countries at around 46,000,000 bushels notwithstanding the reduction of nearly 80,000,000 bushels in the crops as stock of old grain carried forward are unusually large and the more favorable prospects of feed grains suggest a material reduction in the use of wheat for livestock during the coming year. Weather in the Argentine continued dry. Trade reports suggest considerable late seeding as a result of the recent strengthening of the world wheat markets and the new extensive use of modern machinery in seeding. Rainfall in the

dry areas of Australia resulted in New South Wales and North-western Victoria. Conditions have been generally favorable in Western Australia throughout the season to date.

Cash hard winter wheat prices advanced with light receipts. Storage facilities continued limited at most central western markets. Mill demand, especially for the better quality of wheat, was good and premiums for this class of wheat advanced, but the lower grades were in slow request. Shipments from Kansas City exceeded receipts but stocks in store increased as a result of deliveries from the large number of cars on tracks following the recent heavy movement. Receipts at Omaha were decreasing but were still relatively heavy and shipments out were moderately large on former sales. Demand from all sources at that market appeared good. The light offerings met a good inquiry at St. Louis. Elevator and mill storage was limited in that market but larger loadings and the lighter receipts tended to prevent any material congestion. The differential between cash and future prices was narrowed and 12 per cent protein No. 2 hard winter was quoted August 19 at Kansas City at \$1.29 1/2, \$1.32 compared with \$1.25 1/2-\$1.27 per bushel a week ago. No. 2 hard winter was quoted at St. Louis at \$1.33 1/2-\$1.34 and at Cincinnati \$1.32 1/2-\$1.34 per bushel. Mills were bidding \$1.34 1/2-\$1.35 per bushel for ordinary hard milling wheat delivered Texas common points. No. 2 hard winter was quoted at Liverpool at the close of the week at \$1.42 1/2, as compared with sales at London at the same date of 63 pound Roaso, September delivery at \$1.45 per bushel.

The soft winter wheat market also developed a firmer tone with light receipts in good demand. Inquiry from mills in and around St. Louis was active for the better grades but the supply was light. Southeastern mills were reported buying cheaper wheat from Ohio river points. Demand for wheat for storage was excellent at Cincinnati but the increased premiums tended to curtail temporarily export and mill inquiry. No. 2 red winter was quoted at St. Louis at \$1.37 1/2-\$1.38, at Cincinnati \$1.35 1/2-\$1.36, or about 20c to 4c over No. 2 hard winter. Sales of No. 2 red winter were light at Kansas City and were reported at \$1.32 per bushel.

Buy where you see the Violet Color

FOR VACATION DAYS IN GLACIER PARK

The cash spring wheat market was firm to strong with only moderate pressure from offerings. Protein content of all wheat at Minneapolis is reported somewhat below general expectations. The average protein content of over 4,000 cars was 12.44 per cent with 12.50 per cent the maximum per cent and 9 per cent protein in the lowest. Later spring wheat receipts, however, are expected to average higher, according to trade reports. Future prices showed a not gain of around 1c at Minneapolis and protein premiums advanced 2c during the week.

PORTLAND PRODUCE
PORTLAND, Ore., Aug. 20 (AP)—Butter: extras half cent and prime firsts cent higher; cubes: extras 4c; standards 4c; prime firsts 4 1/2c; firsts, 4c; creamery 5 1/2c.

Link's Business College and Secretarial School
Boise, Idaho
Announces its Fall Term Opening Dates
Tuesday, Sept. 3, and Monday, Sept. 9.
Office will be open Monday, Sept. 2, for registration only.
Good Office Positions at Good Salaries for all who graduate from our Complete Business Training Course.
We assist our students in securing work to help defray expenses while attending school. Send for Full Information.
Stenotype Classes organized on above dates.

prices: prints, 2c over cube standards.
Eggs: extras two cents higher and standards one cent higher; prices to retailers: fresh extras 40c; standard firsts, 37c; fresh medium extras 32c; fresh medium firsts 32c.
Eggs: prices to wholesalers: fresh extras 38c; standard firsts 35c; fresh medium extras 31c; medium firsts, 30c.
Milk: steady; raw milk (40 per cent) \$2.25 c. w. l.; delivered Portland 45c truck, 46c; delivered at Portland 46c; truck, 46c; delivered at Portland 48c.
Potatoes, onions, potatoes, wool, nuts, hay, cascara bark and hops steady and unchanged.

CHICAGO CASH
CHICAGO, Aug. 20 (AP)—Wheat: No. 3 red \$1.20 1/4; No. 2 mixed \$1.26.
Corn: No. 2 yellow \$1.03; sample grade white 97.
Oats: No. 3 white 42 3/4; 44; No. 4 white 40 1/2.
Rye: No. 2 \$1.01.
Barley: quotable range 50 1/2-65.
Timothy seed: \$4.05 1/2-4.80.
Clover seed: \$15.50 1/2-23.50.

BUTTERFAT
SAN FRANCISCO, Aug. 20 (AP)—Butterfat f. o. b. San Francisco, firsts 43 1/2c; firsts, 41c; creamery 5 1/2c.

J.C. PENNEY CO.

108 Depot St.
La Grande, Ore.

This Shoe Is As Good As It Looks

Look at the semi-hard box that spells comfort, the rubber tapped heels to take the jars and the clever stitching. In Gun Metal or Medium Dark Tan.

\$4.98

WE BUY FOR LESS WE SELL FOR LESS

Merchandise of merit at money saving prices in our August Cleanup Sale.

Children's shoes and oxfords 98c & \$1.95
Boys' Caps 65c

Just a few sleeveless silk dresses left at \$2.58

YOU be the one to get these.

NEW YORK STORE

Destroyers of High Prices

MARKET NEWS OF THE DAY

PORTLAND GRAIN			
Sept.	1.28	1.29	1.27
Dec.	1.33 1/2	1.35 1/2	1.33
May	1.41	1.42 1/2	1.41

CHICAGO WHEAT			
Sept.	1.35 1/2	1.37 1/2	1.31 1/2
Dec.	1.41 1/2	1.43 1/2	1.40 1/2
Mar.	1.49 1/2	1.51 1/2	1.51 1/2
May	1.52 1/2	1.54	1.52

each of six dozen ears; peaches 85 cents and \$1 a box; French beans 2 to 2 1/2 cents; shell beans 5 cents; peas 8 cents; lettuce \$1; celery 75 cents; celery hearts, \$1.25; peppers 50 cents box; Italian squash 35 to 40 cents box; summer squash 25 cents; apples \$1.25 a box.

POULTRY
SAN FRANCISCO, Aug. 20 (Federal-State Market News Service)—Broilers: high 12-16 lbs. per doz., 29 1/2c.

PORTLAND LIVESTOCK
PORTLAND, Ore., Aug. 20 (AP)—Cattle and calves: show, weak; medium and under grade steers and she-stock hard to move; receipts, cattle 52; calves, 125.
Shears: 1100-1200 lbs. \$11.50 to \$12.25; good \$11.25 to \$12.25; medium \$10.00 to \$11.50; common \$7 to \$10.00. Homers, good \$9.50 to \$10; common to medium \$7.75 to \$9.50. Cows, good \$8.50 to \$9.50; common to medium \$6.00 to \$8.50; low cutter \$3.00 to \$6.00; good beef \$7.00 to \$7.25; cutter to medium \$5.00 to \$7.00. Calves, medium to choice \$10.00 to \$12.50; calf to common \$7.50 to \$10.00; vealers, milk fed, good to choice \$12.00 to \$14.50; medium \$11.00 to \$12.00; calf to common \$8.00 to \$11.00.
Hogs: slow, around steady; 25 to 25 cents lower, receipts 250, including 84 direct. Heavyweight (250-350 lbs.) medium to choice \$10.00 to \$12.50; medium weight (200-250 lbs.) medium to choice \$11.00 to \$12.50; light weight (150-200 lbs.) medium to choice \$12.50 to \$15.50; light (120-140 lbs.) medium to choice \$11.75 to \$12.50; packing hogs, rough and smooth \$8.50 to \$9.50; slaughter pigs (50-120 lbs.) medium to choice \$11.00.

CHICAGO LIVESTOCK
CHICAGO, Aug. 20 (U. S. D. A.)—Hogs, 22,000; slow, steady; 15 to 25c lower; 250-300 lbs. \$10.00 to \$10.50; 300-400 lbs. \$10.25 to \$11.25.
Cattle, 9,000; calves, 2,000; very uneven, sluggish trade; weak to 25c lower; steers, 1200-1500 lbs. \$13.00 to \$17.00; 500-1100 lbs. \$12 to \$17; 600 yearlings 7.50-9.50; \$12.25 to \$16.50; vealers \$10.50 to \$17.50; stocker and feeder steers \$10.75 to \$12.50.
Sheep, 17,000; slow, steady; market lambs \$12.25 to \$13.50; ranges mostly fat ewes \$5.00 to \$6.00; feeding lambs, medium, lambs, 92 lbs. down \$13.00 to \$13.80; ewes, 150 lbs. down \$4.75 to \$5.50; feeder lambs \$12.25 to \$13.50.

FIND IT HERE

Copy for this column must be in by 9 a. m.

AUTOMOBILE OWNERS ATTENTION
For quick service, finest glass, and reasonable prices have your windshield and auto glasses fitted at Richardson's Art and Gift Shop. Specialists in all kinds of glass work.
8-16-20

YOUR PICTURES
Will be most natural when enlarged and hand tinted by Richardson's "The Art Man." He takes the same personal care with your pictures that he does with his own scenic views. Visit his shop and inspect his work, at Richardson's Art & Gift Shop.
8-16-20

NEW GIFTS
For every occasion are arriving daily at Richardson's Art and Gift Shop.
8-16-20

Rem-stitching, planting button holes, etc. Norton's Kibbie Shop.
—Adv.
Sidney Lyte, the piano tuner, will be at La Grande hotel week of Sept. 8th.
7-27-20

Top Grade Eggs Higher Today In Oregon Market

PORTLAND, Ore., Aug. 20 (AP)—Because of a sharp decrease in supplies, top grade eggs have been advanced. Extras are up two cents and standards one cent. Mediums are unchanged.

The car advance had been expected for several days in view of higher quotations at other markets. The latter price also has been advanced, bidding at the Portland produce exchange adding extra 1/2 cent higher to 46 and putting fresh up one cent at 45 1/2. Fresh remained at 41 cents. The price of butterfat was not disturbed. Prices at the East Side market of the Gardeners' and Banners' association played battleship and basketball today, some products going down, others up. Potatoes sold for \$2.15 a box of 100 pounds or \$2.50 for a sack of 100 pounds. Cauliflower brought \$1.25 a case, carrots 20 cents a dozen, bunches, seed onions 20 cents a dozen, bunches, turnips 80 cents a dozen, bunches, tomatoes, No. 1, 80 cents, No. 2, 80 cents; corn \$1.40.

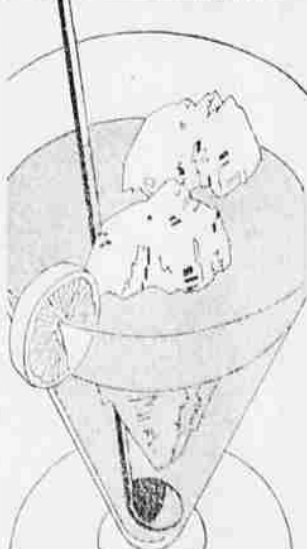


JAMES G. LARUE

had almost wrecked my health. I've gained weight and strength and feel like a new man. "For over two years I was in poor health. I couldn't even eat simple foods without upsetting my stomach and I was so weak the slightest exertion would tire me completely out. My kidneys worried me a lot and I became nervous. I hardly ever got any good sound sleep. I was always taking something for constipation, too. "Three bottles of Sargon and the sore Mass Pills have entirely restored my health. I feel better all the time and digest everything perfectly. The kidney trouble is gone and I sleep well all night. The pills relieved my constipation and the way my strength and energy is coming back is wonderful. I'm now hale and hearty and feel many years younger than I really am." The above statement was recently made by James G. LaRue, 2029 W. Broadway, Astoria, Spokane. Sargon may be obtained in La Grande from the Red Cross Drug Store.

Sargon Brought Him New Health

"The Sargon treatment not only toned up my whole system and restored my health but it ended the stomach and kidney troubles that



Glacier National Park, that magnificent Rocky Mountain area, is a vast scenic vacation land on the main line of the Great Northern Railway. Tree Tea is served in the Glacier Park Hotels, and on all the trains of the Great Northern. There's cool enjoyment in a fragrant glass of Tree Tea Orange Pekoe Iced. Relaxing, refreshing, a treat for vacation days everywhere.

TREE TEA

Served by the GREAT NORTHERN RAILWAY and Glacier Park Hotels

THERE is no substitute for Cream of Tartar for fine baking

There are substitutes, but none that produce fine baking. Ask any domestic science teacher which she prefers - - a cream of tartar baking powder - - or one that contains a substitute. Ask any doctor. Ask any pure food department. Any good baking powder is acceptable - - but if it contains cream of tartar, you are on the safe side - - that's all. But that's enough for millions of housewives.

Baking Insurance
If you find any fault whatever in this baking powder, or think you do, your grocer will return your money and also pay for the eggs, butter, flour, etc., you have used.

Schilling product

1 pound

All cream of tartar baking powders are about the same, and sell at about the same price. But Western women have known for many years that one of them (Schilling) contains a full pound for their pound price (not 12 oz.). They know that it means 10c in the purse every time they buy Schilling full-weight baking powder.

47 Spices
32 Extracts
Coffee Tea