

### ADD MODELS TO CHRYSLER GROUP

#### Three New Lines of 6-Cylinder Cars Are Announced Today.

Walter P. Chrysler today announces the introduction of three new lines of 6-cylinder cars bearing his name, according to L. W. Weeks, local dealer.

The three new Chryslers have been christened the "77," the "79" and the "76." The "76" is the first six under \$1,000 to bear the Chrysler name.

Many noteworthy engineering advancements have been embodied in the new cars. Among the wholly original features introduced by the "77" and "79" are:

The multi-range gear shift, an entirely new principle in power control; the synchronized power system, engineered as a unit from radiator to rear axle; downward facilitation, a scientific advancement in carburetion; larger and more powerful engines, for increased speed and wider performance possibilities; parallel spring suspension and Chrysler-type rubber shock insulators, affording the best word in comfort; archaic hood, new in the science of their design and construction; new smartness and style that transcend all existing ideals and new interior luxury and elegance with true Chrysler finesse. These outstanding features are in every make of the new original and make their appearance for the first time in the new "77" and "79."

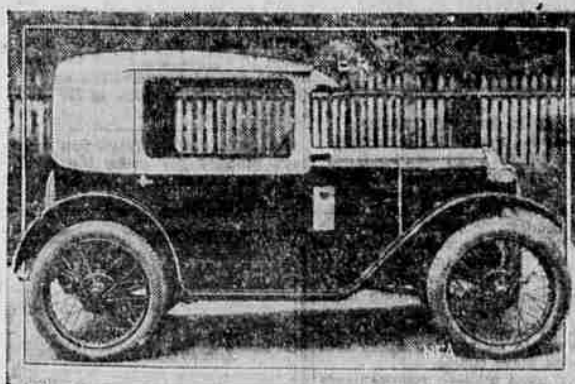
**New Development**  
The "Aerodynamic" principle of body construction in an exclusive Chrysler development, the revolutionizes the science of body building. This structure of deadweight strength, braced and reinforced with pillars and joints of welded steel, possesses immeasurably increased safety. Low wind and lateral shifting action of the body have been reduced to a minimum and the elimination of metal contacts and the use of hardwood throughout disposes of all annoying squeaks, rattle and rumbles.

The new synchronized power system, completely balanced and engineered as a unit from the radiator to the rear axle, attains the effect of one scientifically unified mechanism. All models are powered with engines of the famous Chrysler Silver Dome principle, which gives high compression, power with ordinary fuel. In the "77" and the "79" the large crankshafts are fully counterweighted and supported by seven inter-hung double main bearings of generous size. They have aluminum pistons with T-bar struts and tongue-and-groove piston rings, a rigidly welded crankcase, full-force feed lubrication, impulse neutralizer, oil filter and scores of other refinements.

The "77" develops a maximum of 35 H.P. at the brake. It has a bore of 3 3/8, a stroke of 5 inches and displacement of 218.4 cubic inches. The "79" has a bore of 3 1/8, a stroke of 4 3/4 inches and displacement of 218.6 cubic inches. It develops 35 H.P.

**Control More Simple**  
An important element of the synchronized power system, the exclusive Chrysler-built multi-range gear shift, unlike any other gear shift in use today, Chrysler engineers say, renders the control of a car far more simple, more effective and safer than ever before. It has four forward speed ranges; heavy duty—starting—accelerating and

### Austin Car Invades U. S.



One of the smallest automobiles in the world, the Austin, above, is to be manufactured in the United States at Butler, Pa. Sir Herbert Austin, English manufacturer, has announced. Its four-cylinder engine develops only seven horsepower, yet it can do 30 miles an hour and is reported to get 20 miles on a gallon of gasoline. It is 9 feet 2 inches long and weighs only 850 pounds.

driving range. The accelerating range permits unequalled pick-up and hill climbing, while the driving range is a direct drive and allows high car speed with comparably slow engine speed. The shifting arrangement is standard, the starting, accelerating and driving range positions being located the same as first, second and high of the ordinary transmission. The heavy duty range is intended solely for very hard pulling, in deep mud or sand. It is latched out of the shifting quadrant by a strong spring and is located to the left of the starting range.

Chrysler presents for the first time the revolutionary downward carburetion, a principle of facilitation new in automobile engineering. Airplanes have had a somewhat similar system but it has not been used heretofore on passenger cars. The carburetor is mounted above the engine instead of at the side, permitting the fuel to flow downward aided by the force of gravity.

The body types available in the new "77" include three sedan models—the Royal, town and crown sedan. There are four coupes, royal, crown, business and convertible, and the open models are the 5-passenger Phaeton and roadster with rumble seat. The "79" model has six body styles—royal and business coupes, royal sedan, phaeton, phaeton and roadster. A variety of colors, with upholstery to match, are available.

### New School Bus Models Product Of Dodge Bros.

Introduction of two new models of six cylinder school buses with increased carrying capacities at low lower prices, and reductions up to \$220 on other models of school buses have been announced by the bus and motor coach division of Dodge Brothers. Production schedules have been revised to supply the heavy seasonal demands for school buses through the nationwide Dodge dealer organization.

"Record breaking sales leading to volume production in the immense manufacturing facilities of Dodge Brothers have made it possible to offer these larger and improved school buses at reduced prices," said A. H. Ferrandou, director of the company's bus and motor department. "The tradition-

### GARAGE GOSSIP

**On Business**  
M. A. Harrison, manager of the Blue Mountain garage, recently returned from a business trip to Portland.

**Two ton truck**  
Leol Clark recently purchased an International two ton truck from the Blue Mountain garage.

**Important Visitors**  
C. J. Hubbard, of the Ford Motor company from the Portland branch, is visiting at the Perkins Motor company over the weekend. P. J. Brennan, cashier of the Ford Motor company, of Portland, who is travelling in Eastern Oregon for his vacation, called at the Perkins Motor company yesterday.

**New Carload**  
The Perkins Motor company unloaded two carloads of new Fords yesterday, consisting of ten passenger cars.

**Accepts Position**  
Paul Graham has accepted a position as auto salesman at the Blue Mountain garage.

**Accepts Position**  
Mrs. H. Scott has accepted a position in the office of the Perkins motor company.

**Chevrolet Sales**  
Stewart Pennington recently bought a Chevrolet landau from the G. L. L. Brothers, Oakland. The Oregon Trail garage of Union, bought a new truck, J. T. Coffler, of Elgin, a new truck, Van Petten Lumber company, a truck, and the Hot

Lake sanitorium, a new truck.

**New Cars**  
The Harrison Chevrolet Co. unloaded a shipment of cars today. The shipment consisted of four passenger cars.

**Buy Chrysler Coupe**  
Joe B. Laucifex recently purchased a new 65 Chrysler coupe from the L. W. Weeks garage.

**New Cars**  
The Chrysler garage have two beautiful models of 70 and 77 Royal sedans on display. The cars feature the new ventilated hoods, new parking light, which are on either side of the windshield, directly under the visor.

**Meets Former Friend**  
Yesterday, William Cooper, who is in charge of the distribution of Oakland-Pontiac cars, traveling out of Spokane, was in La Grande. He happened to call at the Perkins Motor Co. garage and found that W. C. Perkins, a friend who was in business in Lewiston, Mont., at the same time he was, is now owner of the Ford Motor company here.

**Here on Business**  
N. W. Wood, Firestone representative, was a business caller at the Perkins Motor company this week.

### Wood-Chopper Has 150 In His Family

**BAROMONTIERS, France (AP)**  
—"Papa" Rene Schwaller wants a medal of some sort. He is patriarch of a family of 15. He isn't particular about the decoration. "Any one will do and I think I deserve it," he says.

Schwaller, 92, was born in this village, near Strasbourg. All his life he has been a wood-chopper. By his first wife he had eleven children and by his second three. There are 46 grandchildren and 39 great-grandchildren, besides three score daughters and sons-in-law. What pleases him most is to get

### Graf Zeppelin Uses Veedol On World Journey

Official information was delivered to Dr. Hugo Eckener, commander of the Graf Zeppelin upon the airship's arrival at Lakehurst that all arrangements had been completed in one of the important phases of the Graf Zeppelin's journey around the world—the lubrication of the five Baybach motors which are relied upon to take the huge dirigible on her 18,000 mile voyage.

Dr. Eckener was notified by the Tide Water Oil company that in addition to two tons of Veedol on hand at Lakehurst and ready to pump into the ship's oil tanks, great supplies of the motor oil had been assembled at Friedrichshafen, at Tokio and at Los Angeles.

In all eight tons of Veedol are awaiting the ship at strategic points around the world. The oil supplied is the same as that which was used by the Graf Zeppelin on her first journey from Friedrichshafen to Lakehurst and home again, and on the journey which she has just completed from Friedrichshafen.

a few minutes ride in an automobile, a thing of mystery to him. His advice to those who wish to grow old gracefully is: "Drink plenty, smoke much and work hard."

Ray: So you are to be operated on, eh?  
Jay: Yes, Doc said he wants to take out my appendix, but I think what he really wants to get out of me is a new car. (Sir Laughalot.)

Grandpa in a speedy car  
Pushed the throttle down too far!  
Twinkle, twinkle, little star,  
Music by the D. A. R.  
— Rochester Democrat and Chronicle.

**Auto Salesman:** And what kind of a horn would you like best? Do you care for a good loud blast?  
**Haughty Customer:** No; I want something that just sneers.

**Madge:** Would you still love Harry if he didn't have a car?  
**Mildred:** Oh, yes, if he promised to get one right away.

scared nowadays is when he meets another horse—North Jersey Motorist.  
Ohio's wheat crop this year is valued at \$48,000,000.

AGE... *One year*  
BUSINESS... *81,065 Sales*  
REMARKS... *All-time record for first-year cars*

De Soto Six—one year old—August 4, 1929. During the past twelve months, 81,065 De Soto Sixes were sold—breaking all records for a first-year car in the entire history of the industry.

It is not surprising that a car so handsome, so comfortable and responsive—and so safe and easy to drive as De Soto Six—should find a ready market. But it is significant that even such a car as this should set a new sales record for the industry in the first year of its existence.

This unprecedented public acceptance is your assurance that no matter what model you may choose for your own, you will possess a car whose distinction and quality will afford lasting pride and satisfaction—such as no other car at its price can offer.

Test De Soto Six in any way that you desire—drive it yourself. A demonstration will enable you to confirm for yourself the popular judgment that has made De Soto Six a record-breaker in its first year.

PRICES AS LOW AS  
**\$845**  
AT THE FACTORY

## DE SOTO SIX

CHRYSLER MOTORS PRODUCT

BUCHANAN-MUNHALL MOTOR CO.  
1114 Jefferson Ave.

## Custom beauty, sleeve-valve power

IN THE COMPLETE WILLYS-KNIGHT LINE

FROM THE LOW-PRICED "70-B" TO THE LUXURIOUS NEW GREAT SIX . . . . .

The brilliant success of the new style Willys-Knight "70-B" proves its value as the largest, smartest, and most powerful Knight-engined car ever offered at such a low cost.

The new Willys-Knight Great Six is distinguished by an individuality that reveals itself in a higher order of design, luxury and performance. Some of the car's many advanced mechanical features are: Bijur one-shot lubrication system, heavier seven-bearing crankshaft, extra strong and rigid frame, full internal four-wheel brakes, manual heat control and automatic radiator shutters.



GREAT SIX SEDAN \$1895 "70-B" COACH \$1045

All Coupe, 5-pass. Coupe, Roadster, at same price. Buick wheels, trunk rack included. All Willys-Knight prices include Tolls, O., and specifications subject to change without notice.

WILLYS-OVERLAND, INC. TOLEDO, OHIO

## NEW STYLE WILLYS-KNIGHT

Gettings & Hanks  
Jefferson Ave.

## FASTER...SMOOTHER MORE POWERFUL

than any other six of equally low price

## PONTIAC BIG

PRODUCT OF GENERAL MOTORS

When you drive the Pontiac Big Six and actually experience its exclusive performance qualities—it's easy to understand why thousands of buyers are turning to this outstanding General Motors product!

**745**  
J. O. B. Pontiac, Mich.  
Five-Passenger Two-Door Sedan Body by Fisher  
The down payment is low—and a few dollars a month take care of the balance. Come in to see how much more Pontiac Big Six offers—and bring your car for our appraisal.  
Consider the delivered price as well as the list price when comparing automobiles. Pontiac delivered prices include only reasonable charges for handling and for financing when the Time Payment Plan is used.

**FASTER . . . . . SAFER . . . . .**  
**EASIER TO DRIVE . . . . . SMOOTHER . . . . .**  
**MORE ECONOMICAL . . . . . MORE POWERFUL**

LA GRANDE MOTOR CO.  
Adams Avenue  
Hall Motor Co. Enterprise

### A Clean, Convenient Station and we are ON THE JUMP

To give you prompt, pleasant service. Making a profit is one thing, but our primary concern is making you satisfied. Texaco products help us a lot, too!

### Heasty's Filling Station

### Who Wants to be THE GOAT?

NO ONE of Course BUT

An Auto Accident Can Make You One Unless You are Protected—

Auto Insurance on the Instalment Plan

### UNITED STATES INVESTMENT CO.

O. W. Warnock, Mgr. 113 Depot St.