

### STUDEBAKER HAS NEW MODEL OUT

#### One-Ton Panel and Screen Delivery Car is Announced Today.

A new one-ton panel and screen delivery car of 146-inch wheelbase, powered by a Studebaker-built six cylinder motor, is announced by Studebaker. It is already in production and shipments are being made.

Among the features of the new unit is a 75 horsepower motor, bodies in two sizes (155.3 and 181.3 cubic feet loading capacity), tilting and adjustable seats with a removable seat alongside the driver, permitting when necessary the delivery of extra long packages, mechanical four-wheel brakes and a 17-inch steel-only steering wheel.

Throughout, the unit has been designed not only for longevity, but for sustained good performance and economy. The wheelbase of 146 inches has several outstanding advantages of special importance to the merchant, chief of which is proper load distribution and less overhang of the body.

The loading capacity of 181.3 cubic feet for the 181 inch body and 155.3 cubic feet for the 96 inch body affords plenty of space for packages. The low loading platform, 27 inches from the ground, permits packages to be loaded and moved quickly and conveniently.

Four doors, 47 inches wide, are provided with ventilating louvers. The front doors are 35 inches wide. Here again the generous width makes it possible for packages (those directly back of the driver's seat) to be moved easily and quickly. An added feature is the provision that has been made for interior illumination through the addition of a dome light.

The motor has a bore and stroke of 3 1/2 by 4 1/2 inches which gives a piston displacement of 248 cubic inches with an 8. A. K. rating of 27 horsepower. A semi-automatic choke control eliminates over-choking and reduces crankcase dilution.

### Durant Takes Artist Through Tough Country

OAKLAND, Cal., June 22.—For the second time within the year, Carl Sammons, nationally famous artist, whose reputation has come through his colorful presentations of western scenes, has completed an extensive motor tour of the western states.

"The gifted artist, whose canvases grace the homes of many of America's greatest men, pays a high price for his contributions to American art. Sammons goes out into the desert and catches the colors that are found there when the desert sun is brightest. He does not paint that are found there when the sun is dim, but he catches the colors that cannot be created in the imagination. As a result of Sammons' accurate reproductions of western scenery, his canvases have a strong appeal for both men and women who love the West.

Sammons largely attributes his reputation as an artist to his motor car. He says that his "partner" in his Durant six coupe, in which he travels to the farthest corners of the Western region in his search for scenes that will win the approval of lovers of Western art.

The roads over which Sammons travels in his Durant six coupe are not the much-traveled highways for which the West is famous. In prospecting for pictorial material, Sammons travels over sandy wastes, up rocky chrysoth, and along dry arroyo beds.

### GARAGE GOSSIP

#### New Trucks Arrive—

L. W. Weeks, of the Chrysler garage, unloaded a carload of automobiles recently, including two large trucks and two Chryslers, a "35" coupe and a "45" sedan. The new trucks, which are Chrysler-made, are the latest product of the company and include many new features both in design and in appearance.

**Chevrolet Sale—** Several Chevrolet sales were made by the Larson Chevrolet Motor company this week, including J. T. Cron, roadster; Hamann brothers, ton and a half truck; D. W. Edwards, of Baker, coupe; Mrs. Dorothy Meyers, roadster; Mrs. J. H. Allen, sedan; S. F. Runney, cabriolet; Mrs. Edward Life, Hot Lake, coupe, and Mr. and Mrs. A. H. Wall, a coupe.

**Studebaker—** The Studebaker garage here reports the sale of a Studebaker eight sedan to Helen Allen and a Studebaker Commander sedan to Aldie Hessel. The Enterprise Furniture company of Enterprise also purchased a Studebaker Arlington hearse from M. J. Ross.

**Chrysler—** Claude Berry purchased a new Chrysler "35" sedan from the Chrysler garage this week.

**United Trucks—** A carload consisting of five International trucks, were unloaded by the Blue Mountain garage Friday.

**Used Cars Selling—** Several car salesmen along automobile row report that used car sales have been fairly good during recent weeks.

**Visiting Here—** J. T. Murphy, of the Oakland-Pontiac people, with headquarters in Spokane, is a visitor in La

Grande this week. Mr. Murphy's home is in Walla Walla.

**Sells Pontiac—** The La Grande Motor company sold a Pontiac four-door sedan this week to M. V. Herring of Walla Walla.

### HOW FAST CAN YOU STOP IS HIS QUESTION

"Unequaled brakes cause abnormal tire wear and make safe driving impossible," states W. C. Perkins, local Firestone dealer. "You may drive safely for years—never have even a minor accident but suddenly you meet an emergency. You may be driving along perfectly at ease with muscles relaxed then comes a shudder of agony. You come face to face with your emergency and you do not have time to wonder if your brakes will hold.

"Streaks of black are common on hard highways. These streaks are evidence of improperly adjusted brakes. Someone is driving along, suddenly he puts on the brakes and one or two wheels lock, grinding off good tread rubber.

"The testing of brakes is not a simple job. Automobile manufacturers have equipment which does it accurately. Satisfactory equipment, however, is costly and requires considerable space to install it. For these reasons many service stations do not have it.

"The Cowdrey Dynamic Brake Tester is the only scientific machine that enables proper testing and equalization of brakes. The car is driven on the tester, the wheels of the car with brakes set, are turned by electric motors and every inequality of drum, brake lining or brake adjustment is immediately indicated to the operator."

Mr. Perkins went on to say that faulty brake adjustment is no longer excusable. He has installed a Cowdrey Brake Tester and all brake tests are free. Adjustments and retuning are handled at reasonable rates.

### Plan Celebration Of Plymouth Car's First Anniversary June 29

DETROIT, June 22.—When the Pilgrim fathers landed in December of 1620 near the famous Rock and settled what they later called Plymouth, they began to make history. The struggle of these Puritans against all natural odds, their physical and moral stamina, their success in establishing colonies in the wilderness of the north east part of North America, has earned for them everlasting fame.

When the engineering experts of Chrysler Motors, more than a year ago, conceived and completed plans for a new low-priced Chrysler-built automobile, a suitable name was sought. So studiously had the new car been designed in every point, so rugged was it in construction, so free was it from those limitations generally associated with lower priced cars, that it seemed entirely fitting to name the car Plymouth, because of the association of the name with that dauntless band of stalwart Pilgrims, who were among the first American colonists.

A year has rolled by since the Plymouth car was first introduced to the public. Today, while the country is preparing to celebrate on July 4th the birth of the nation, the Plymouth Motor corporation and its dealers throughout the country are preparing to celebrate the first anniversary of the Plymouth car.

Just as the Pilgrim fathers overcame all obstacles which beset them when they first landed on these shores, so has the Plymouth car forged ahead in its field, making new history in the automobile industry, both from the viewpoint of public reception as well as production. The public which a year ago knew the Plymouth car only as a name, today is waiting with interest the opportunity to view

### LEFTY O'DOUL FINDS BUICKS "JUST RIGHT"

He has done plenty of "running home" on those two lightning-like legs of his—has this Frank "Lefty" O'Doul.

He is the soaking sensation of baseball this year and right now is pepping the outfield boards to the tune of almost 400 per cent. He is the hit of the kid fans and the answer to the prayer of the owners and supporters of the Philadelphia "Phillies."

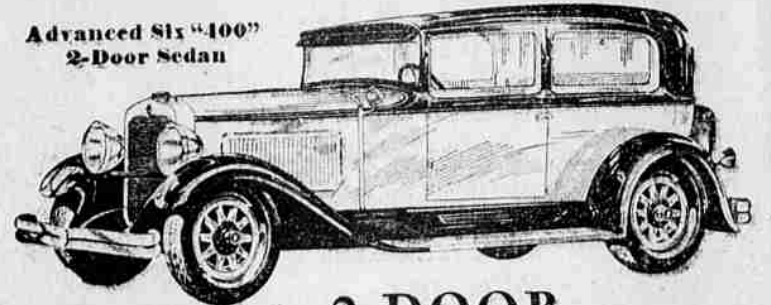
The hitting sensation of the coast. According to Bill Larn, member of the Pacific Coast Buick club and close friend of O'Doul, the popular ball player will again call Buick for transportation on his return to California at the conclusion of the present playing season. Bill has received specific instructions to meet the O'Doul limited with the latest thing in Buick motor cars. And he will be right on the job.

**Stock Dealings Old**  
The stock exchange business is said to have been in active operation in Holland as far back as the Seventeenth century.

# NASH "400"

Leads the World in Motor Car Value

Advanced Six "400" 2-Door Sedan



## 2-DOOR 3 SEDANS

STANDARD SIX Delivered, Fully Equipped

SPECIAL SIX Delivered, Fully Equipped

ADVANCED SIX Delivered, Fully Equipped

**\$1071 \$1485 \$1730**

Lower, Delivered, Completely Equipped Prices

**SMARTLY** designed—luxuriously finished—brilliant in performance—exceptionally attractive in price—you should certainly see the three Nash "400" 2-Door Sedans before deciding.

The Standard Six 2-Door Sedan is the style and performance leader of the \$900 field.

It has big Chromium-nickel headlamps, cowl lamps and stop light. Chromium-nickel fenders, and smartly flared, one-piece bumpers. The engine is a new high compression type with a 7-bearing crankshaft, Bohnalite pistons and torsional vibration damper.

Delivered, Fully Equipped, Price Range of 23 Nash "400" Models, \$1066 to \$2248 including Touring, Roadster, Coupe, Cabriolet, Victoria and Sedan Models

McKennon Nash Motor Co.

806 Adams Avenue,

Main 650.

### Let Us Quote You A Price On A Set of Samson Tires

Trade in your old ones before they blow out — It pays. We ask a trial from you on our tire repairing. Oiling and Greasing.

### BECK & ROBBINS SERVICE

Here to Serve You

Standard Oil Products.

### The Cost of Insuring a Ford Fire & Theft

New car	\$9.50
Six months old	6.50
Over 18 months	5.00

#### Collision

(Damage to your car)	
Full collision coverage	
Open car	\$32.00
Closed car	36.00

#### Modified Full Coverage

Open car	19.00
Closed car	22.00

#### \$50.00 Deductible

Open car	8.00
Closed car	9.00

(Modified Full Coverage excludes certain parts of the car except when an accident amounts to 5 per cent of the list price, it then becomes full coverage.)

#### Public Liability

(Covers personal injury claims against the assured arising from the use of your car)	
\$5,000/10,000	\$11.00
\$10,000/20,000	13.20
\$25,000/50,000	14.96
\$100,000/300,000	16.83

\$5,000/10,000 means that the insurance companies limits of liability are \$5,000 for any one person or \$10,000 for any one accident involving more than one person.

#### Property Damage

(Covers damage to other peoples property for which you may be liable)	
\$1,000	\$6.00
\$1,500	6.60
\$2,000	6.90
\$5,000	7.80
\$100,000	9.00

Public Liability and Property Damage costs are subject to 10 per cent credits in cases where the assured has not been involved in an accident in the last two year period.

For example—To figure complete coverage on a sedan a year old—

Fire & Theft	\$ 6.50
Collision	36.00
Public Liability \$10,000/20,000	13.20
Property Damage \$1,000	6.00

Total (Less \$1.92 if not involved in an accident in two year period) 1.92

Cost 59.78

The cost of not insuring your car may be many times greater — Have your car insured now before the crash.

### United States Investment Co.

O. W. Warnock, Mgr. 113 Depot St.

### Who Wants to Drive a Shabby Car?

No one of course—and now our expert lacquer work is available at such a moderate price that everyone can afford

## An Auto Paint Job

Prices gladly given—Bring in your car.

**BILL BUNCH GARAGE CO.**  
Directly Opposite of U. P. Depot.

# The Price

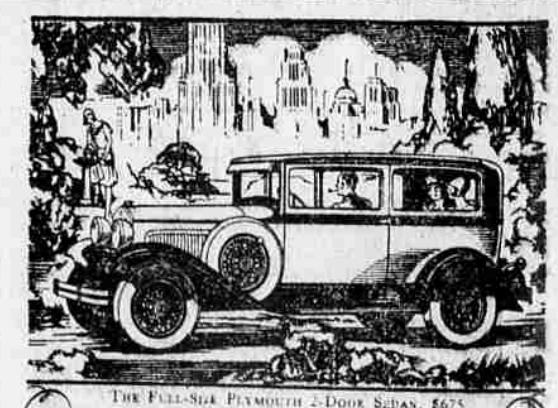
of Car Painting

# Explodes!

Expert Lacquer Work  
ASK FOR PRICES

## PLAYLE OIL CO.

SUPER SERVICE STATION  
Stalcup & Zimmerman  
Phone Main 165 Cor. Adams St. and Greenwood  
"Always as Near as Your Phone."



### Results heretofore unheard of in a Low-Priced motor car

There never before has been a car at anywhere near the price that could be driven comfortably at top speed hour after hour. There never before has been a car in the low-priced field so smooth and flexible. Plymouth, bear in mind, is the only low-priced car with the advanced scientific advantages of Chrysler engineering. That, in and of itself, explains the thrilling superiority of Plymouth performance in every respect. Plymouth is the only low-priced motor car with Chrysler weatherproof 4-wheel hydraulic brakes. That is the reason why

**PLYMOUTH**  
AMERICA'S LOWEST PRICED FULL-SIZE CAR

L. W. WEEKS  
Greenwood & Jefferson