

ISSUE PERMIT TO ERECT NEW HOME

Bird Bennett to Build on Thirteenth—Year's Total now \$77,515.

Two building permits were issued during last week and another this morning, totaling \$2880, and bringing the year's total here to \$77,515.

Bird Bennett, local building contractor, took out a permit this morning to erect a one-story modern home on Thirteenth street, which will cost \$3000.

Permits issued since June 14, follow:

June 16—R. R. Anderson, to erect a garage on Cedar street between Jefferson and Grandy, to cost \$80.

June 12—C. G. DeGreeve, to alter and repair a home on Main avenue between second and Third streets, to cost \$800. (This is the home that was recently damaged by fire.)

June 17—Bird Bennett, to erect a one-story dwelling place on Thirteenth street between Washington and I avenues, to cost \$3000.

G. E. Refrigerator Said Worry Proof

In these busy days, when the housewife has numerous interests outside the home, it is necessary for the manufacturer of home appliances to make his product as free from mechanical worry as possible, without interfering with its efficiency.

The busy housewife cannot be expected to remember to call the mechanism, yet in most machines it is necessary that this attention be given at regular intervals to prevent serious damage and expense. Then, too, there is the inconvenience suffered by being temporarily deprived of some much needed household aid.

"The General Electric refrigerator is one that can be plugged in the nearest convenient outlet and actually forgotten, in so far as the mechanics of the machine are concerned," states Hal Bohnenkamp of the W. H. Bohnenkamp company. "However, the very beauty of the machine and the perfect service it renders keeps it from becoming forgotten once it is installed in the kitchen," he continued. "We have had a number of inquiries from women who have seen General Electric refrigerators in the homes of their friends. Its extreme simplicity invariably makes a lasting impression on them and has been the cause of quite a number of the machines being installed in homes throughout the city."

Professor Parrington, his wife and their son, were touring the Cotswold hills. Mrs. Parrington left her husband at his typewriter shortly after noon yesterday while she went to lunch. When she returned she found him dead on his bed.

STAMBOUL (AP)—The fishermen's association whose members work in the Black Sea, the Bosphorus and the Sea of Marmora, presented the Turkish government with a plane to add to the country's air force. The government in gratitude has named the machine "Fishermen of Stamboul."

LENINGRAD (AP)—The first regular meteorological station of the Soviet union north of the Arctic circle, was opened May 1 on the Kola Peninsula. The station is at an altitude of 2,800 feet.

WINCHESTER, Gloucestershire, England, June 17 (AP)—Vernon Louis Parrington, professor of English literature in the University of Washington at Seattle, died suddenly here yesterday.

Professor Parrington, his wife and their son, were touring the Cotswold hills. Mrs. Parrington left her husband at his typewriter shortly after noon yesterday while she went to lunch. When she returned she found him dead on his bed.

STAMBOUL (AP)—The fishermen's association whose members work in the Black Sea, the Bosphorus and the Sea of Marmora, presented the Turkish government with a plane to add to the country's air force. The government in gratitude has named the machine "Fishermen of Stamboul."

LENINGRAD (AP)—The first regular meteorological station of the Soviet union north of the Arctic circle, was opened May 1 on the Kola Peninsula. The station is at an altitude of 2,800 feet.

WINCHESTER, Gloucestershire, England, June 17 (AP)—Vernon Louis Parrington, professor of English literature in the University of Washington at Seattle, died suddenly here yesterday.

Professor Parrington, his wife and their son, were touring the Cotswold hills. Mrs. Parrington left her husband at his typewriter shortly after noon yesterday while she went to lunch. When she returned she found him dead on his bed.

STAMBOUL (AP)—The fishermen's association whose members work in the Black Sea, the Bosphorus and the Sea of Marmora, presented the Turkish government with a plane to add to the country's air force. The government in gratitude has named the machine "Fishermen of Stamboul."

LENINGRAD (AP)—The first regular meteorological station of the Soviet union north of the Arctic circle, was opened May 1 on the Kola Peninsula. The station is at an altitude of 2,800 feet.

WINCHESTER, Gloucestershire, England, June 17 (AP)—Vernon Louis Parrington, professor of English literature in the University of Washington at Seattle, died suddenly here yesterday.

Professor Parrington, his wife and their son, were touring the Cotswold hills. Mrs. Parrington left her husband at his typewriter shortly after noon yesterday while she went to lunch. When she returned she found him dead on his bed.

STAMBOUL (AP)—The fishermen's association whose members work in the Black Sea, the Bosphorus and the Sea of Marmora, presented the Turkish government with a plane to add to the country's air force. The government in gratitude has named the machine "Fishermen of Stamboul."

LENINGRAD (AP)—The first regular meteorological station of the Soviet union north of the Arctic circle, was opened May 1 on the Kola Peninsula. The station is at an altitude of 2,800 feet.

WINCHESTER, Gloucestershire, England, June 17 (AP)—Vernon Louis Parrington, professor of English literature in the University of Washington at Seattle, died suddenly here yesterday.

Professor Parrington, his wife and their son, were touring the Cotswold hills. Mrs. Parrington left her husband at his typewriter shortly after noon yesterday while she went to lunch. When she returned she found him dead on his bed.

STAMBOUL (AP)—The fishermen's association whose members work in the Black Sea, the Bosphorus and the Sea of Marmora, presented the Turkish government with a plane to add to the country's air force. The government in gratitude has named the machine "Fishermen of Stamboul."

LENINGRAD (AP)—The first regular meteorological station of the Soviet union north of the Arctic circle, was opened May 1 on the Kola Peninsula. The station is at an altitude of 2,800 feet.

WINCHESTER, Gloucestershire, England, June 17 (AP)—Vernon Louis Parrington, professor of English literature in the University of Washington at Seattle, died suddenly here yesterday.

Professor Parrington, his wife and their son, were touring the Cotswold hills. Mrs. Parrington left her husband at his typewriter shortly after noon yesterday while she went to lunch. When she returned she found him dead on his bed.

STAMBOUL (AP)—The fishermen's association whose members work in the Black Sea, the Bosphorus and the Sea of Marmora, presented the Turkish government with a plane to add to the country's air force. The government in gratitude has named the machine "Fishermen of Stamboul."

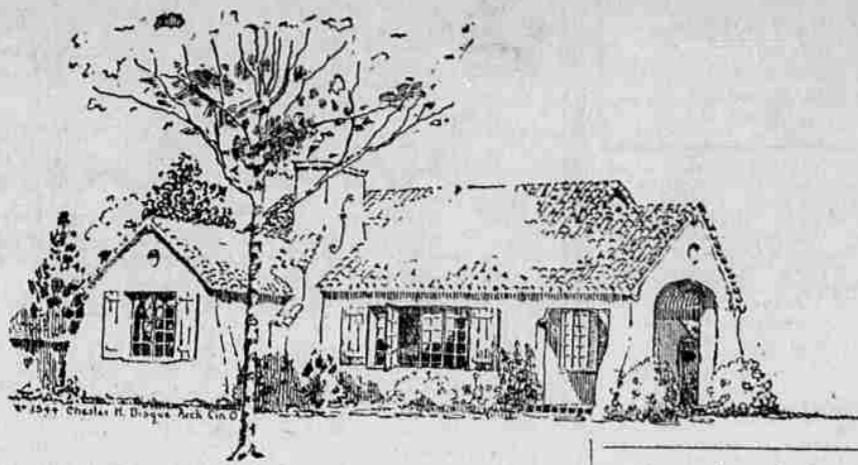
LENINGRAD (AP)—The first regular meteorological station of the Soviet union north of the Arctic circle, was opened May 1 on the Kola Peninsula. The station is at an altitude of 2,800 feet.

WINCHESTER, Gloucestershire, England, June 17 (AP)—Vernon Louis Parrington, professor of English literature in the University of Washington at Seattle, died suddenly here yesterday.

Professor Parrington, his wife and their son, were touring the Cotswold hills. Mrs. Parrington left her husband at his typewriter shortly after noon yesterday while she went to lunch. When she returned she found him dead on his bed.

STAMBOUL (AP)—The fishermen's association whose members work in the Black Sea, the Bosphorus and the Sea of Marmora, presented the Turkish government with a plane to add to the country's air force. The government in gratitude has named the machine "Fishermen of Stamboul."

A CALIFORNIA BUNGALOW



By Chester H. Dague

One floor plan houses that can be built on a thirty-five foot lot are indeed rather scarce and hard to find, especially if a porch is contained therein. The bungalow as illustrated above, can be contained on a lot of this width and not only has a front porch, but each room in the house has abundance of light and cross ventilation.

The location of the chimney and living-room fireplace helps to accomplish this and also admirably serves to tie the bedroom projection into the main part of the house. The treatment of the bedroom and porch gable walls are both distinctive and pleasing in their battered or sloping faces. The stairway to the basement is located, as shown in the floor plan, so as to conserve the outside wall areas for the breakfast nook, etc., which helps make for a more comfortable home.

The red roof of tile or other material is supported on the white rough cast stucco walls with a gay note of color being found in the dark blue green of the shutters and green foliage. The casement sash throughout and all exterior hardware being painted a deep rust color.

The living-room fireplace is designed to permit the burning of logs and is simply treated in a California Mission style with dark red tile hearth. An ash dump is also included here.

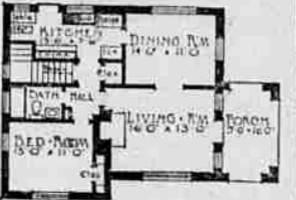
Hardwood floors, good grade of enameled plumbing fixture, fly screens of the rolling type, and cast iron hardware are used throughout. The porch floor and basement are cemented and usual laundry and heating apparatus are to be found in the basement, which extends under the entire house.

It is estimated that the house will cost between \$4,500 and \$5,000, exclusive of heating and plumbing.

WASHINGTON, D. C., June 17—The backlog of construction contracts signed last year served to maintain construction activities at a high comparable level during May despite recession in the rate at which building contracts are being signed this year, according to a statistical study just completed by the Associated General Contractors of America.

The volume of construction performance during May, as indicated by shipments of basic construction materials, rose 18 per cent over that of April and was the greatest for that month in any year on record. This despite the fact that building contracts have declined 14 per cent during the first four months of this year as compared with the first four months of last year.

PARIS (AP)—A collection of eighteenth century French drawings, pastels and gouaches, brought a total of \$40,000 at auction recently, although there was no outstanding work in the lot. The high price of \$10,000 was paid for a view of the Park of St. Cloud in gouache by Louis Gabriel Moreau, the Elder.



Orders Received By Mills During Week Are Given

SEATTLE, Wash., June 17—Orders received by 206 mills reporting to the West Coast Lumbermen's association for the week ending June 8 were 19.8 per cent above production and 7.6 per cent over shipments for the period. Both production and orders increased over last week, production rising 42 million feet and orders 31 million.

New business coming to the industry, as shown in these reports, increased in the mill, domestic and export trade and declined slightly in local sales. Orders taken by the 206 mills fluctuated greatly in the past three weeks and the current level is slightly in advance of the week ending May 25 and below that of May 18.

The average of orders in excess of production for the year to date as is shown by reports from 112 mills is now 7.6 per cent. Inventories are low, 102 mills now reporting a decrease in annual stocks of 10.59 per cent since January 1. With production for the past three weeks relatively low and below current orders since May 18, the situation is a strong one for the industry. Production and orders, however, are both below the levels of last year.

Production at 272 mills for the week ending June 8 totaled 294,781,850 feet, or 74 per cent of their rated weekly capacity.

over last week, production rising 42 million feet and orders 31 million.

New business coming to the industry, as shown in these reports, increased in the mill, domestic and export trade and declined slightly in local sales. Orders taken by the 206 mills fluctuated greatly in the past three weeks and the current level is slightly in advance of the week ending May 25 and below that of May 18.

The average of orders in excess of production for the year to date as is shown by reports from 112 mills is now 7.6 per cent. Inventories are low, 102 mills now reporting a decrease in annual stocks of 10.59 per cent since January 1. With production for the past three weeks relatively low and below current orders since May 18, the situation is a strong one for the industry. Production and orders, however, are both below the levels of last year.

Production at 272 mills for the week ending June 8 totaled 294,781,850 feet, or 74 per cent of their rated weekly capacity.

WASHINGTON, D. C., June 17—The backlog of construction contracts signed last year served to maintain construction activities at a high comparable level during May despite recession in the rate at which building contracts are being signed this year, according to a statistical study just completed by the Associated General Contractors of America.

The volume of construction performance during May, as indicated by shipments of basic construction materials, rose 18 per cent over that of April and was the greatest for that month in any year on record. This despite the fact that building contracts have declined 14 per cent during the first four months of this year as compared with the first four months of last year.

PARIS (AP)—A collection of eighteenth century French drawings, pastels and gouaches, brought a total of \$40,000 at auction recently, although there was no outstanding work in the lot. The high price of \$10,000 was paid for a view of the Park of St. Cloud in gouache by Louis Gabriel Moreau, the Elder.

Makes the old home look like a new one!

HOW simple these days to have an interesting, colorful roof put on right over the old one! And how much it adds to the worth of your home!



Our Certain-teed Mineral-Surfaced Shingles are bringing many homes out of the shadow of old age into the "progressive" class. Among the different kinds we carry, you will find one that architecturally is just suited to your type of house.

Certain-teed Shingles (Mineral-Surfaced)

We believe you will be surprised at the moderate cost entailed in putting a new Certain-teed Shingle roof over your old one. And, our acquaintance with leading contractors and builders puts us in a position to serve you in many of the building and repair problems you have. Call on this service.

Advertisement for VAN PETTEN LUMBER CO. with phone number 732.

Fix Up Your Room With BESTWALL PLASTER WALL BOARD

In your spare time. It comes in 4 foot widths and 6, 7, 8, 9, and 10 foot lengths. Easy to apply. One side sized ready for painting or kalsomining.

Advertisement for Home Lumber & Coal Co. with address 1802 Cove Ave. and phone number 248.

Improvement Gossip

Attractive Front—The Tiffin's new front, coupled with the stuccoing of the building by Harry Hoffman, makes a very attractive appearance. The new front is one of the most modern types in the city.

New Coat of Paint—The front of the La Grande National bank is receiving a new coat of paint. This work is being done by the Coolidge Paint shop.

Complete Window Shades—The installation of window shades at the normal school have been completed. This work was done by the Bohnenkamp Furnishings store.

Dutch Store Progressing—Work on the new Dutch store on Depot and Fifth street is nearing completion. The roof has been installed and the building stuccoed.

CANTERBURY, England (AP)—This ancient cathedral city has 24,000 inhabitants but only 35 policemen. Capt. W. Vansittart, the mayor, reports there has been no murder here for 40 years. There were eleven arrests for drunkenness last year but most of the offenders were petty thieves or violators of traffic regulations.



For Suburban Homes Low first cost Low operation cost. with a

FAIRBANKS-MORSE Home Water System

Ask for full details.

Nate Zweifel

PLUMBING --- HEATING New Ways for Old

FREE

Ironing Board Pad and Cover with each

\$6.00 Hotpoint Electric Iron

Sold During Month of June.

See Our Window We're Showing

THE LARGEST IRON IN THE WORLD!

H. & S. ELECTRIC CO., Inc.

Sommer Hotel Bldg. Phone Main 127.

SPLINTERS

Official Publication of THE VAN PETTEN LUMBER CO. Vol. 2

Today's problem: A Ford and a Packard are many miles apart, approaching each other. The Ford goes pretty fast, but the Packard goes 50% faster in mile a minute). A homing pigeon flies from the Ford to the Packard twice as fast as the Ford goes, and keeps flying from one car to the other, until they meet. The Packard driver met the Ford in two hours. He overheard his engine, and smoked four Camel cigarettes at 15¢ for 20¢. How far did the pigeon fly?

and weighs much more to the gallon than the average prepared paint. The price is real low.

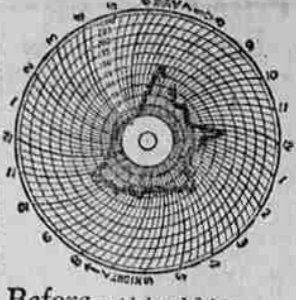
Our CERTAIN-FERD house paint has been giving excellent satisfaction. This is a guaranteed lead and oil paint

successful men are paid?" Olson: "Certainly, they come out on top."

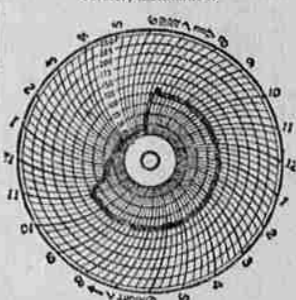
Compare our CERTAIN-FERD composition shingles with any other shingle on the market. The Certain-teed are using a method of applying the rock that makes it stick longer and wear better.

Incidentally "Whish ya lookin' for?" Cap: "We're looking for a drowned man." Incidentally: "Whish ya want one for?"

It's an oak floor you want, we surely have it. We can furnish you with most any kind of a floor you want and at a reasonable price.



Before—with hand firing Notice the wide variations in pressure between 7 A. M. and 11 P. M.; a pressure of 100 lbs. was desired, but could not be accurately maintained.



After—with the Iron Fireman See how the pressure rose immediately at 7 A. M. and was held practically constant at 100 lbs. until 11 P. M., when the automatic control brought it down to night pressure. Load varied constantly but not the pressure.

The IRON FIREMAN Automatic COAL Burner

Furnishes Automatic Even Heat Burns the Cheapest Coal

Fred Spaeth Next to Montgomery-Ward Company.

BUILDING MATERIAL For the Small Job

When you have a little job to do around home we can furnish the material and deliver it to your premises.

NORTHWEST HOUSE PAINT—LIME — PLASTER — CEMENT — PIONEER ROOFING.

Sawyer-Holmes Mercantile Company

Phone MAIN 17

Now Is the Time to Look After Your Furnace

Why not have your furnace inspected by our experts now, so that you will get maximum efficiency from your heating plant next winter. We will make a necessary repairs and put your furnace in first class condition. Now is the time to have this work done most economically.

LYNCH PLUMBING CO. Phone Main 179

DON'T TINKER

When you need electrical work of any kind, call us. We will send an experienced electrician at once, no matter how small the job, and you may be sure that the work will be done according to the underwriters code.

ELECTRIC SERVICE STORE 1412 Adams Ave. -- Phone Main 124. H. E. Williams



Use correct durable paints

What pleasure it is to decorate the home anew, both inside and out.

But how costly and disappointing when colors fade soon after they are on the surface.

ACME QUALITY Paint-Varnish-Lacquer for beautiful, sparkling, lasting colors. Protect your investment when you redecorate. Come to us. We carry the complete line of ACME finishes for everything in your home.

THE HOUSE OF COLOR W. K. Gilbert Co.