

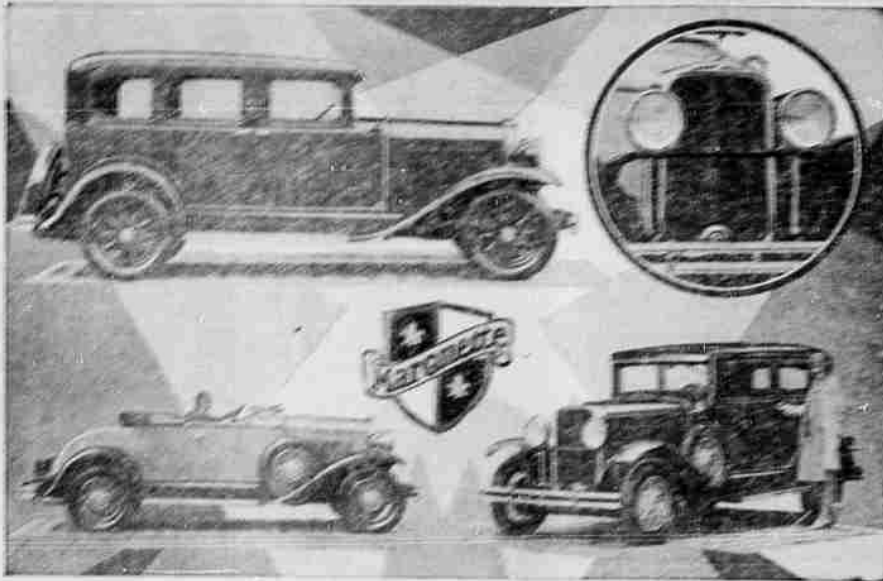
MARQUETTE NEW MODEL BY BUICK

Six-Cylinder Car Comes to Market a Thoroughly Proven Product.

Continuing in the production of Buick's latest masterpiece of the automobile, the new six-cylinder car designed by the Buick Motor Company, is the first that

the car, though seen to the public, actually comes to the automobile world a thoroughly proven product with a number of standard and advanced features and accessories, according to Buick's marketing men.

MARQUETTE MAKES ITS DEBUT



Marquette, Buick's newest model, is shown in the picture above. The car is shown from the side and front. The car is a six-cylinder model with a top and a spare tire mounted on the side.

GARAGE GOSSIP

Wells Buick—The Buick Motor Company reports the sale of a four-door Buick to G. A. Piment.

During the last few days, H. L. Boone purchased a '29 Buick. Edith Wadler bought a '29 Buick and E. B. Willis purchased a '29 Buick.

Displaying Plak products an including an instructive reel of a merchant's benefit. F. H. Manning, of Portland, was the chairman of the dinner.

Auto Parts—To Make Your Car Run Like New

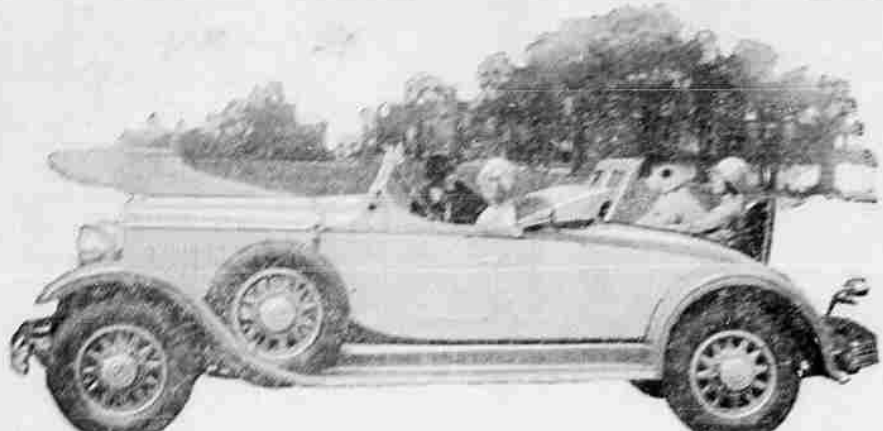
PERFECTION PERFECTION

SECRET TIMING GEARS SECRET TIMING GEARS

Ring Gears and Pinions

JACK ALLEN SUPPLY CO.

Newest Chrysler Imperial



With custom body by Locke & Company this Roadster is the newest creation in the Chrysler Imperial line and in the latest expression of smartness and individuality in sport types.

The Marquette is a car of brilliant performance. The experiments with the car's ability as a hill climber well illustrate the majority of the tests in which Buick engineers subjected their new product.

Further tests prove that the Marquette not only has a powerful capacity to climb the steepest hills, but is one that unusual combination of abilities so long sought after by all automotive engineers—quick get-away, flashing speed and rapid power. No one achievement has been sacrificed at the cost of the other.

The bright color scheme of the body rounds out the smartness of the model while the interior upholstery of heavy leather gives an added touch of luxury.

Its value is making every owner an Oakland enthusiast

Among owners of the New Oakland All-American Six . . . especially among those who have been driving this greatest of all Oaklands for a period of several months . . . enthusiasm is growing with every passing week.

LA GRANDE MOTOR CO.

Hall Motor Co. Adams Avenue Enterprise

The New OAKLAND ALL-AMERICAN SIX

PRODUCT OF GENERAL MOTORS

Whippet De Luxe Roadster Thrills The Younger Set

Although the new Whippet Six de Luxe roadster has enjoyed a wide acceptance since its introduction a few months ago, Willys-Overland dealers throughout the country report that with the coming of the warmer days of Spring the demand for this striking model has been of such a volume that would indicate one of the most popular types ever built by the Toledo manufacturer.

TO SLEEPY TOWN IN AUTO BED

Given Morbis of Chicago doesn't find going to bed such a dread-tal ordeal, for it is just like a joy ride with a bed that looks like a motor car. This is the latest idea in children's furniture.

ITS Engine wins YOUR LASTING Praise



ITS BEAUTY WINS YOUR INSTANT ADMIRATION

COACH \$1045

Crope \$1045; Sedan \$1245; Roadster \$1045; Touring \$1045. Wire wheels included. Price f.o.b. Toledo, Ohio, as a specification subject to change without notice. Equipment, other than standard, extra.

ONCE you have driven a car with the patented double sleeve-valve engine, with its smooth, quiet flow of power, you become a Willys-Knight enthusiast and cannot derive full satisfaction from any less modern type of motor.

WILLYS-OVERLAND, INC., TOLEDO, OHIO

NEW STYLE Willys-Knight

Gettings & Hanks

Jefferson Ave.

DUNLOP

Easy Payments on this First Grade Tire

Everything is in your favor. Peak quality Dunlops, on easy payments, with prices the lowest in history -- and a Surety Bond with each tire.

Grasp the opportunity. Come in. We have your size. Our service is dependable . . . Buy today, and pay as you ride. But insist on the best - ride on Dunlops.

WE HAVE YOUR SIZE	Size	Per Week
29x4.40		\$.70
30x5.00		.95
30x5.25		1.10
31x5.25		1.15
30x6.00		1.25
31x6.00		1.30
33x6.00		1.40

Pneumatic Truck Tires Guaranteed 25,000 Miles

PLAYLE OIL CO.

SUPER SERVICE STATION

Stalcup & Zimmerman

Phone Main 165 Cor. Adams St. and Greenwood

"Always as Near as Your Phone."