

### Pacific Railroads Lock Horns Over Right to Olympic Timber

By Wilbur A. Sanders  
Associated Press Staff Writer,  
SEATTLE, Wash. (AP)—Natu-  
re's quiet reign of many centuries  
over vast forests of the Olympic  
peninsula in western Washington  
will be broken soon by a battle of  
commercial interests for timber  
valued at more than \$100,000,000.  
Three transcontinental railroads  
and several large lumber compa-  
nies have become involved in the  
fight. First plans for developing  
the peninsula were announced by  
the Northern Pacific and Union  
Pacific railroads. These lines have  
started surveys for a proposed  
joint railroad extending nearly 60  
miles north into the district from  
Grays harbor.

Logging railroads followed by  
declaring their intention of build-  
ing south from Port Angeles on the  
northern tip of the peninsula.  
The Chicago, Milwaukee, St. Paul  
and Pacific railroad has extensive  
forests in the district and lumber-  
men expect the road to extend  
its line from the north.

Behind the railroad plans lies a  
struggle between big lumber compa-  
nies. Puget Sound interests say  
the Olympic timber is necessary for  
their mills and have thrown their

support to plans of the northern  
railroads. Grays harbor companies  
seek construction of roads from the  
south, thus diverting logs toward  
their mills.

United States and state forest  
officials have warned all factions  
that indiscriminate cutting of fed-  
eral and state reserves will not be  
permitted. Both the federal and  
state officials seek conservative  
cutting on a scale that will assure  
a perpetual supply through refore-  
station.

More than 50,000,000,000 board  
feet of timber, enough to build  
5,000,000 five-room houses, can be  
obtained from Clallam, Jefferson  
and Mason counties.

This is more than one-third of  
the amount that has been cut in  
the state since 1852 and more than  
was cut in America during the  
first 200 years after its discovery.

At present the annual timber  
harvest in the state is more than  
6,000,000,000 feet annually, being  
one-sixth of all the soft wood lum-  
ber used in the United States.

Trees of the Olympic forests in-  
clude the giant Douglas fir, averag-  
ing 200 to 250 feet in height,  
and western hemlock, Sitka spruce  
and western red cedar, all forest  
giants.

HEAVY ON THE "CLEAN-UP"  
COLLEGE PARK, Md. (AP)—  
Four members of the University of  
Maryland baseball team were  
"clean-up" hitters on their high  
school team.

**Same Price**  
**FOR OVER 38 YEARS**  
**25 ounces for 25¢**  
**KC**  
**BAKING POWDER**  
Guaranteed Pure  
Use KC for fine texture  
and large volume  
in your bakings

Millions of pounds used  
by our Government



# WELCOME

TO LA GRANDE—  
EASTERN OREGON NORMAL SCHOOL  
The Faculty—its Members and Students

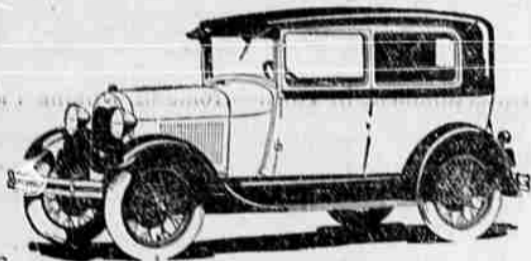
LA GRANDE'S leading store is proud of the new Normal build-  
ing! And proud to think of the chosen location—La Grande!  
For over 30 years this store has played a prominent part in the  
growth and development of this community, and has always main-  
tained the highest standard of service. We cordially invite you of  
the Normal School to become acquainted with this store and this  
service.

## N. K. WEST & CO., INC.

La Grande's Leading Store for Over 30 Years

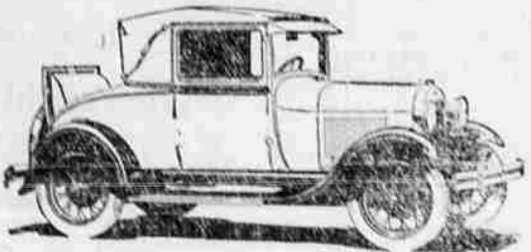
Note the smart  
low lines and  
substantial beauty  
of these new  
FORD closed cars

\$525



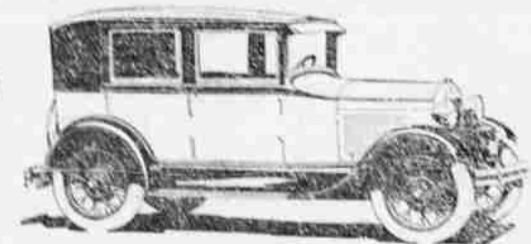
NEW FORD TUDOR SEDAN—Combines the features of all the new  
Ford cars. Beautiful low lines and choice of colors... quick acceleration  
... 55 to 65 miles an hour... vibration-absorbing engine support...  
four Houdaille hydraulic two-way shock absorbers... Triplex shatter-  
proof windshield... fully enclosed, silent six-brake system... typical  
Ford economy, reliability and long life.

\$550



NEW FORD SPORT COUPE—The new Ford Sport Coupe brings you  
smart style with speed, comfort and unusual handling ease. Low, sleek  
lines—distinguished by their substantial simplicity. Your choice of a  
number of beautiful two-tone color harmonies. Provoxin lacquer lifetime  
finish. Rumble seat included as standard equipment.

\$625



NEW FORDOR SEDAN—This good-looking Fordor Sedan has been  
built for comfort—and service. Generous seat space and ample leg room  
for all five passengers. Rich, durable upholstery. Deep cushions. Low  
light. Full-rickled hardware. Your choice of a number of colors. An  
unusually good family car because of its comfort, speed, safety, reliability,  
low first cost and low up-keep cost.

Call or telephone for a demonstration



Perkins Motor Company

4th & Adams Phone M 500

Welcome to the Normal School Regents,  
Faculty, Students! All Eastern Ore-  
gon Is Proud of This Fine Institution.

## Three More Great Bargain Days

THURSDAY  
FRIDAY  
SATURDAY



COTTONS have a Smart Place  
in SUMMER FASHIONS

YES, cottons are here with all the fashion prominence any fabric needs to make it a  
huge success. Smart women are wearing cottons—and in so many garments. Cot-  
ton dresses; cotton sport jackets; cotton beach pajamas; cotton undies, etc. See these  
new arrivals.

Pique—Broadcloth—Suitings—Gabradines  
Regular 60 and 65c Values

39c

With cotton so much in demand we are offer-  
ing for this Thursday, Friday and Sat-  
urday hundreds of yards of popular "cottons"  
at this special price. All new spring and  
summer colors, weaves and patterns at, yard

39c

PETER PAN—THE GUARANTEED FAST COLOR—32-INCH—ALL  
PURPOSE—SUMMER COTTON FABRIC—3 DAYS SPECIAL ..... 45c

REDUCED  
33 1/3%

OUR ENTIRE STOCK OF HIGH GRADE  
LADIES', MISSES' AND CHILDREN'S  
SPRING AND SUMMER COATS

REDUCED  
33 1/3%

## Here Are Bargains In Our Men's Store

Popular Boys' Longies  
In Sizes of 10 to 18 Years

REGULAR \$3.95 values, in wide bottom, full cut  
boys' longie trousers. Herringbone, flannel,  
tweed and cashmere weaves in colors of tan and  
grey mixtures, all sizes from 10 to 18 years. A real  
value at

\$2.95

Men's Golf Knickers

That formerly sold at \$8.50 to \$11.00

HERE is a real opportunity! Men's golf knickers  
in smart plaid, and diagonal weaves, small  
checks and stripes at this low price. Full cut roomy  
knickers in colors of tan and grey, priced specially at

\$5.95

Children's Play  
Sandals  
Sizes 8 1/2 to 2

A group of children's regular  
barefoot sandals with either  
leather or composition soles. Buckle  
strap fasteners all in a dark tan  
coloring, regular \$2 and \$2.50 val-  
ues on sale at

\$1.25

Mexican Shaped  
Straw Hats

THAT ordinarily sell at 75c and  
\$1.00 in a number of shapes  
and colors, some are tassel trim-  
med, all sizes in this lot priced at

45c

Summer Flannels  
All in Light Colors

TROUSERS that sell regularly  
at \$7 and \$8.50 are in this  
group. Plain colors and striped ef-  
fects in the popular colors of greys  
and tans. Wide bottoms and wide  
waist bands with large belt hooks.

\$3.95



La Grande's  
Leading  
Store

N. K. WEST & CO., INC.

For Over  
Thirty  
Years