

### GENERAL MOTORS EXPORTS HEAVY

Overseas Dealers Receive 54,212 During the First Quarter of 1929.

DETROIT, June 1.—In the first quarter of 1929 General Motors sales to overseas dealers amounted to 54,212 cars, as compared with 56,937 in the corresponding period of 1928. This reduction does not in any sense represent change in the demand but rather reflects the limitations on production due to an extensive revamping of certain of the corporation's models, which condition has also been reflected in the reports covering movement of cars in the domestic markets.

To number of cars sold to overseas dealers is shown by quarters in the following tabulation:

Number of Cars & Trucks Sold*		
1929	1928	
1st Qtr. ....	14,212	15,443
2nd Qtr. ....	16,523	15,009
3rd Qtr. ....	17,829	14,885
4th Qtr. ....	15,648	15,600
<b>Total</b> .....	<b>54,212</b>	<b>56,937</b>

\*Note: These figures represent

the sales to dealers by General Motors export organizations, of Chevrolet, Pontiac, Oldsmobile, Oakland, Buick, LaSalle and Cadillac in all countries of the world, except the United States and Dominion of Canada. They do not include sales of Vauxhall Motors, Ltd., or overseas sales of the products of Yellow Truck & Coach Manufacturing company.

### Safety Is Big Factor in Auto Building Today

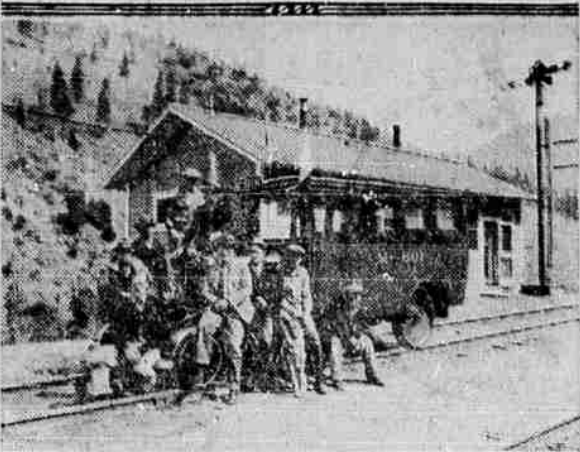
Modern traffic conditions both in cities and rural communities demand not only protection on the part of the automobile driver but details of construction in the car itself that will promote safety of operation.

The most important part of an automobile with regard to safety is the braking system. It is imperative, therefore, that the brake system should be of the most modern design, sure and positive of operation.

"Hydraulic internal expanding four-wheel brakes are used on all models of Chrysler cars," according to J. W. Frazer, general sales manager, "because they have been found to be the simplest in construction. Because they require less attention by the owner, they reduce the maintenance cost of the car as they eliminate numerous mechanical devices, including all cross rods, pull rods and cables. Inasmuch as they are absolutely positive in their operation, they pressure to all four wheels, they have proved to be the most satisfactory brakes we have been able to devise.

"In making the Chrysler a safe car to drive, however, we have not been content to confine our efforts to the braking system. These features of safety are incorporated in various parts of the car with the result that the owner of a Chrysler may be certain that his car will operate easily and safely at all times.

### A Railroad Automobile



The Western Pacific Railroad uses a Chevrolet "locomotive" for inspection trips by its executives over the company's lines. It covers the route from Sacramento through the steep Feather River Canyon to Salt Lake City. The car can make a speed of 45 miles an hour, and the Chevrolet transmission allows it to climb the steepest grades.

### GARAGE GOSSIP

**Buys New Ford**—Marion McClurg is among the owners of new Ford coupes. The car was purchased Saturday it is reported.

**Here From Portland**—E. A. Richards, of the Ford Motor company of Portland, was in La Grande Tuesday, visiting the Perkins Motor company, local dealer of Ford and Lincoln cars.

**Buys Straight Eight**—W. E. Moore, of Elgin, purchased a Studebaker President straight eight this week from the M. J. Goss garage.

**Unload Cars**—The Blue Mountain garage unloaded two shipments of cars this week. The first carload, consisting of two Essex coaches, one Essex sedan and one Hudson sedan, arrived here the first of the week. Yesterday the garage unloaded a carload of International trucks.

**New Marquette Here**—Verne Jennings of the Jennings Motor company, drove a new Marquette truck from Portland Wednesday and has it on display in his show room today. He invites all motorists to inspect the new model, which is a light six made in the Buick Motor company plant. Mr. Jennings left here for Portland Monday night.

**In Ontario**—Clyde Bunting, secretary and treasurer of the Bunting Tractor company, left for Ontario Thursday on a business trip. He is expected to return today.

**Buys Chrysler**—Claude Beale purchased a Chrysler 45 sedan this week from the Chrysler Motor company here.

**Here From San Leandro**—Wade Goodman, of the Caterpillar Tractor company of San Leandro, Cal., is visiting the Bunting Tractor company this weekend. He came to La Grande Friday.

**Buys Plymouth**—Florence Clay is among the owners of new Plymouth cars. She purchased a coupe from the Chrysler Motor company here this week.

# Who are the people who have made this car such an overwhelming success?

The New Pontiac Big Six is scoring a tremendous success. All previous Pontiac production records have been surpassed. But the most interesting phase of Pontiac's latest and greatest success lies, not in the number of people who are buying it, but in the kind of people. They give the real clue to the value this car provides.

Prices \$745 to \$1015, f. o. b. Pontiac, Michigan, plus delivery charges. Bumpers, spring covers and Lavaloy shock absorbers regular equipment at slight extra cost. General Motors Time Payment Plan available at minimum rate.

Consider the delivered price as well as the list price when comparing automobile values. . . . Oakland-Pontiac delivered prices include only reasonable charges for delivery and financing.

## LA GRANDE MOTOR CO.

Hall Motor Co. Enterprise

# THE NEW PONTIAC

## BIG 6 \$745 AND UP

LOOK OVER OUR WANT ADS FOR BARGAINS



With the right equipment and our long experience you'll receive a thoro job that is far different from just ordinary patching or compromising. The work we do costs no more than inferior results.

## Auto Body and Fender Shop

209 Greenwood P. O. Daniels

struction. Because they require less attention by the owner, they reduce the maintenance cost of the car as they eliminate numerous mechanical devices, including all cross rods, pull rods and cables. Inasmuch as they are absolutely positive in their operation, they pressure to all four wheels, they have proved to be the most satisfactory brakes we have been able to devise.

"In making the Chrysler a safe car to drive, however, we have not been content to confine our efforts to the braking system. These features of safety are incorporated in various parts of the car with the result that the owner of a Chrysler may be certain that his car will operate easily and safely at all times.

### Rifle King Is Now Driving His Eleventh Buick

There are very few, if any, communities on the Pacific coast and in the middle west where the name and fame of Captain A. H. Hardy, holder of world's marksmanship championships, are unknown. Captain Hardy has just completed one of the most strenuous exhibition itineraries ever undertaken during his long career and has emerged with a notable addition to his long list of shooting achievements. Among the newest achievements credited to the captain is a world record in chalking up 13,966 consecutive rifle hits on wood-bull targets.

The policeman entered the restaurant and with great dignity announced to the man at the table next to ours: "Your car awaits without."

"Without what?" retorted the rather loud-mouthed gentleman.

"Without lights," said the cop.

"Here's your ticket," said Pointers.

"How did you manage to get that long one?"

"A charity lottery."

"Managed to draw the winning number?"

"No, I got up in the lottery."

# NOW! A New Double Guarantee AT A LOWER PRICE

## See The Zenith Tire

Guaranteed 16,000 Miles  
Another step forward in our efforts to give you the best in—

## Automotive Supplies

Read the details of the new Double Guarantee issued on our Zenith Tires. In every way you are fully protected. The guarantee has been phrased in the most liberal terms ever offered on a tire of this kind. The tire is first grade in every respect. Guaranteed 16,000 miles. It must be good to put a double guarantee on it. The world's largest organization of its kind is back of us. We offer highest possible quality at big savings. Come in for batteries, spark plugs, patching outfits and save on any one of several hundred automotive needs we stock and sell.

Our big Stock of Tires, Tubes and Auto Accessories represents more opportunities to get genuine quality at a saving.



29x4.40 Zenith Balloon 6.15

## W. K. Gilbert Co.



# Drive the Chevrolet Six

-and learn what marvelous performance you can get in a low-priced car

The COACH \$595

The ROADSTER	\$525
The CABRIOLET	\$525
The COUPE	\$595
The SEDAN	\$675
The Sport CABRIOLET	\$695
The Convertible LANDAU	\$725
The Sedan Delivery	\$595
The Light Delivery Chassis	\$460
The 1 1/2 Ton Chassis	\$545
The 1 1/2 Ton Chassis with Cab	\$650

All prices f. o. b. factory, Flint, Michigan.

COMPARE the delivered price as well as the list price in considering automobile values. Chevrolet's delivered price includes only reasonable extra charges for delivery and financing.

If you are one who has always believed that truly fine car performance can only be had in a high-priced automobile—come take the wheel of a Chevrolet Six and go for a ride!

Here, in the price range of the four and with economy of better than 20 miles to the gallon of gasoline, is offered a type of overall performance that will literally amaze and delight you—

—marvelous six-cylinder smoothness that eliminates vibration and body rattle—power that takes you over the steepest hills—acceleration and speed that make every mile a pleasure—and handling ease that leaves you refreshed at the end of the longest drive!

Emphasizing this outstanding six-cylinder performance are the beauty and comfort of smart new bodies by Fisher. Created by master designers—they represent, in every detail, an order of craftsmanship never before approached in a low-priced automobile.

We cordially invite you to come in today and drive the Chevrolet Six!

# Larison Chevrolet Co.

1414-16 Adams Ave. Next to Observer G. L. Larison Mgr.

A SIX IN THE PRICE RANGE OF THE FOUR