

THREE PRINTING SHOPS IN CITY

Adequate to Serve County's Needs—All Have Modern Equipment.

La Grande is fortunately supplied in reference to printing, a basic product that is used in every branch of business and in almost every family in some form or other.

Three printing companies, all of the most modern type, are fully equipped to satisfy practically every demand of this county with the possible exception of a few jobs, which are only necessary infrequently.

In addition to doing the usual commercial job printing and carrying a complete stock of printer's papers, cardboards and social stationery, the company specializes in made-to-order envelopes in large quantities, by which one of the biggest mills on the coast supplies the paper for any make of envelopes and prints them in gangs while they are yet flat paper.

Sticker stamps, stamping ink, numbering machines, rebuilt type-writers, and adding machines are side line stocks of this company. Also this firm was one of the pioneers of Eastern Oregon in selling Christmas cards on an exclusive basis where no other customers can buy identical Christmas cards.

The company has three presses, expert employees and a re-registered type face. A. W. Nelson is manager, S. C. Happersett is compositor and G. O. Craig is the pressman. In addition, Virgil Koehneberger is an after-school apprentice.

The La Grande Printing Company, which is located on Elm street in the West-Jacobsen building, is another splendidly equipped printing shop, well prepared to take care of all the demands made of it by the community.

Started in Printing at 12. C. N. Palmer, the proprietor, was only 12 years old when he entered the printing and newspaper game, and has been following it ever since. He and his family came to La Grande from Oklahoma, and his son Otto, and his wife, assist him in conducting the business.

The company has three modern presses, a new linotype, installed a few days ago to take place of the linotype which had been in use for many years, and also an automatic feeder.

The modern equipment, adequate stock of supplies, and experience enable the company to feature its service as well as the wide variety of printing.

As an example of the quality of the work produced, the company is the official state printer for the Oregon American Legion auxiliary. The company moved into its present quarters in 1913, which were arranged especially for the printing firm.

Ray Currey has the third printing company, located in a modern shop next to the municipal building on Elm street. He has operated his business there since 1924 and maintains a high standard of workmanship.

Modern Presses. As in the other printing companies, Mr. Currey has three modern presses and a large supply of stocks and sufficient equipment to satisfy the demands of the community. Service is featured, and in general this shop can handle any kind of printing.

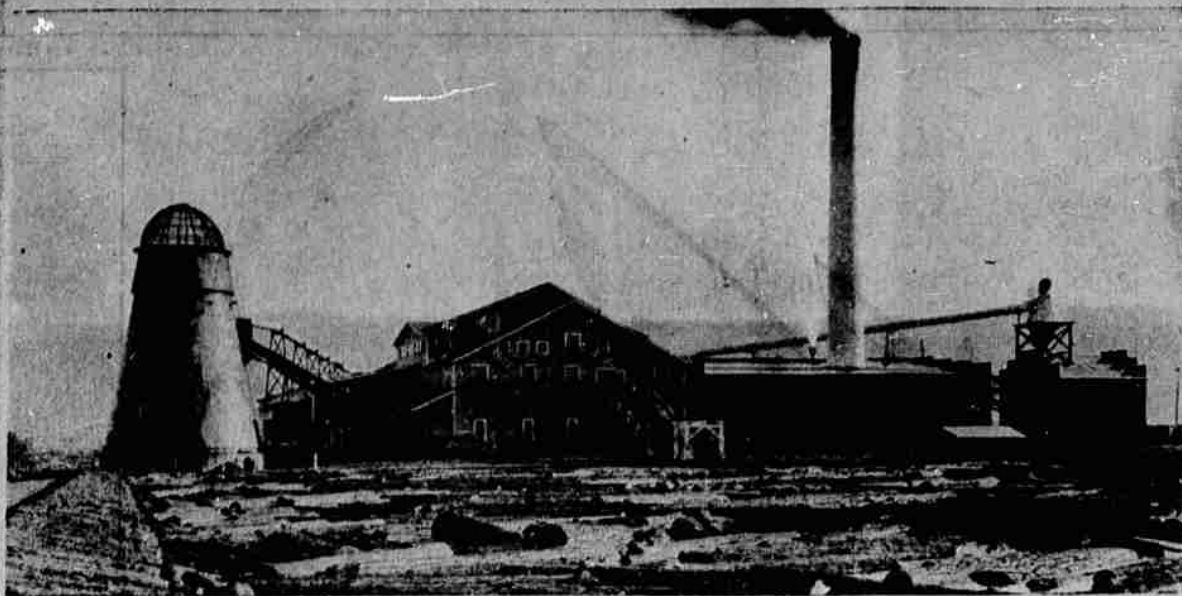
The Currey Press was established in the present location in 1914, and since then has been serving a large circle of patrons.

Speaking of the printing business in this community, Mr. Currey said: "In general there is enough printing equipment in La Grande to care for all the demands of the community."

All three companies compete successfully in prices with the out-of-county concerns, as well as keeping the quality of the products on a high plane.

Russian Names. The Soviet Union Information bureau says that the masculine endings for Russian patronymics are "ovich," "evich" or "itch," the corresponding feminine ending being "ovna" or "evna." In the example cited Anna Petrovna is equivalent to Anna, daughter of Peter, meaning that her father's first name is Peter. Her brother, if his first name were Ivan, would be called Ivan Petrovich, meaning Ivan, son of Peter.

A VIEW OF THE MT. EMILY LUMBER COMPANY PLANT



The Mt. Emily Lumber company's sawmill, pictured above, is the largest in Eastern Oregon and anticipates a 50-year life at least in this territory. It began continuous operations here Jan. 29, 1928. The log pond is shown in the foreground and the giant burner to the left, is in close proximity to the mill. A glimpse of the mammoth dry shed may be had at the extreme right in the distance and the planing mill is near the dry shed.

Grande Ronde Meat Company Plant One of Larger Local Industries

One of the leading business firms of Eastern Oregon and one that deals entirely in home products as well as manufacturing its products in La Grande, is the Grande Ronde Meat company, with offices on Adams street, a few doors from Depot street, and with its packing plant on the corner of Jefferson avenue and Chestnut street in a large brick structure. The company also operates a modern slaughter house, only recently rebuilt following a destructive fire, and has three retail markets which feature the Grande Ronde products.

Employ 35 Men. At present there are 35 men employed by the company, resulting in an annual payroll of about \$70,000. Products, including hams, bacon, bologna, hard, etc., are shipped to many parts of Eastern Oregon, some by freight and some by parcel post. It is interesting to note that \$2,500 is spent each year for postage alone, and that one parcel post shipment, sent to Burns, consisted of 3,000 pounds, sent in 59 cases of 50 pounds each. The company ships into Portland on the west and as far east as Ontario, and as an example of the satisfied customer, private shipments have been sent as far east as New York City. Often people who have used Mt. Emily hams or bacon move to other districts and continue to send back to La Grande for their supplies. The equipment throughout the

packing plant and slaughter house is of the most modern type. After the slaughter house fire, a carload of new machinery was unloaded and installed, including automatic scrapers and polishers, operated by electricity. This equipment can handle as high as 250 hogs per hour without them being touched by men from the time they are killed until they are opened.

New Process. In the lard department the company has installed and is operating a steam process of rendering which is thoroughly modern in every respect—the same as in the large plants in the east except in size. Incidentally, large pails are purchased in carload shipments, one carload containing about 60,000 pails. It is necessary to replenish the supply of pails about every eight months, giving one an idea of the large production.

Field Mice. A good word might be said for field mice, usually set down categorically as "vermin." If the store of seeds recently taken from a mouse's nest in a ranch building in Yellowstone park can be taken as a fair sample, the cache of this tiny creature filled a five-pound lard pail. The seeds were all of the fanweed, one of the worst plant pests in Montana.

Old Stuff. A Chicago optometrist claims the color of the human eye can be changed by diet. Everybody knows how a beefsteak will change the pigmentation of a black eye.

Two Ice Machines. Two ice machines are kept operating continuously during the summer months and in the winter, one is in continuous operation. The demand for ice is so great in the warmer months, that it is necessary to store up a reserve during the colder months. It is estimated

that the company makes 1,600 tons of ice annually.

F. A. Epling is president of the Grande Ronde Meat company, which is incorporated for \$100,000. R. H. Smith is vice president and Frank McGuire is secretary-treasurer. "Efficiency and accuracy in all of the workings of the plant finds a duplicate in the company's offices, where two automatic posting machines are in use."

In general, the Grande Ronde Meat company makes every product that is produced by the nationally known packing plants, and also makes them of stock raised in the Grande Ronde valley by Union county farmers, and at the same time maintains such a high quality as to insure continued expansion of the business.

Concrete

for performance

Comparative cost over a period of years conclusively proves the economy of using concrete products. Our plant at Island City makes and carries in stock the following items—they are made up to a high standard—ask for prices.

Drain Tile [all sizes]

Culverts

Building Blocks

Washed and Crushed River Gravel for All Building and Road Work

Concrete Pipe Co.

Office and Plant, Island City, Ore.

ALL OF NATURE'S



Blue Mountain Milk and Cream

Your dealer can supply you or you can have delivery on our regular routes. Pasteurized or purified raw milk and cream—which ever you wish.—Milk is the perfect food for all ages.

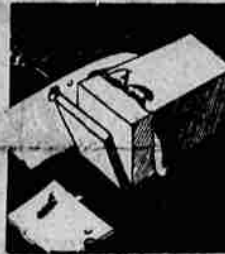
Goodness, Health and

Blue Mountain Butter

Churned fresh every day from selected cream—please—if not, tell your dealer and he will make it good. Butter is nature's food highly concentrated.



Sunshine Stored Up



Blue Mountain Ice Cream

The perfect desert after a dinner—good for the kiddies between meals. Ice Cream is a real food—for the sick and the well of all ages. Buy it in bricks or in bulk—all flavors. Ice Cream is enjoyed by all.

In These Rich Local Dairy Products

Ucoco Certified Eggs

Everyone tested—you can buy them in cartons and be sure of getting strictly fresh eggs that are carefully graded. They are guaranteed to be exactly as represented.

UCOCO—The Mark of Quality.



CALL FOR THEM BY NAME

Plan to attend the Home Products Show where we will have an interesting and instructive exhibit. The quality of the dairy products from the Grande Ronde valley compares favorably with that produced anywhere in the country. It is an industry that will grow and make more prosperity.

Blue Mountain Creamery

"Eat More Dairy Products"