

BOWMAN-HICKS MILL CUT FIFTY MILLION FEET DURING 1928

One of Principal Industrial Concerns in La Grande, Employing About 225 Men Here

One of the principal industrial concerns in La Grande, particularly in reference to the number of men employed and the volume of production, is the Bowman-Hicks Lumber company, with sawmills both here and at Wallowa. The company has headquarters in Kansas City and the only western branch is located in Union and Wallowa counties. The sawmill in La Grande includes two nine-foot head rigs and the one at Wallowa is equipped with one eight-foot head rig and a seven-foot resaw.

The plant in La Grande is at present employing about 225 men. However, in the two counties the sawmills and logging crews bring the total number of men employed to a much larger figure, with a total payroll of about \$39,000 a month or nearly a million dollars a year. At present there are about 200 men at work in the woods.

Plenty of Timber

The Bowman-Hicks company has enough standing timber in its

own right and enough more available to keep it operating continuously for a great many years, according to officials.

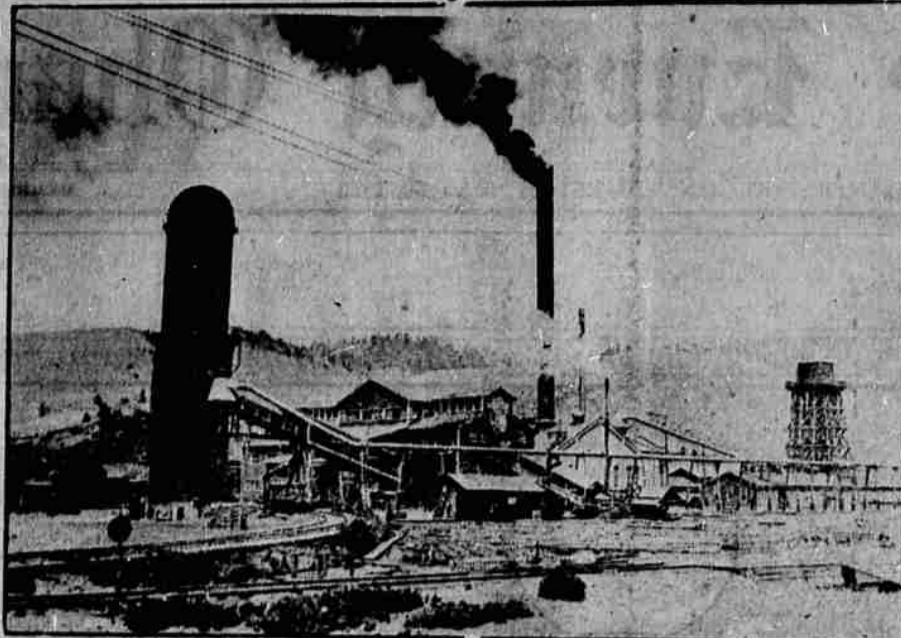
Because of the condition of the lumber market, the cuts during the last two years have not been as large as in the previous years. In 1927 the total cut was 48,000,000 feet and last year the total increased to 50,000,000. This year's production is expected to be on par with 1928. In 1925 the cut was 84,000,000 and in 1926 it was 71,000,000.

Of the 50,000,000 feet cut last year, about 36,000,000 were cut in La Grande, the remaining 14,000,000 being turned out in the Wallowa mill. The local payroll averages about \$25,000 a month, or \$300,000 a year, it is said, and whenever market conditions necessitate an additional shift, the payroll increases proportionately.

Complete Plants

The plants both here and at Wallowa are complete, consisting of sawmill, planing mill, drying kilns, etc., and the logs from the woods are divided among the two plants, according to their capacity. All of the Bowman-Hicks logging operations are now in or near Maxville

THE BOWMAN-HICKS LUMBER COMPANY



Here is a view of the Bowman-Hicks Lumber company plant. The sawmill, in connection with a smaller one at Wallowa, cuts millions of feet of lumber annually and gives employment to several hundred men the year around. Two log ponds are maintained at the La Grande plant and a large building which houses the planing mill and other departments is not included in the picture. Only a birds-eye view of the plant could include the entire list of buildings, the log ponds and the lumber yard.

Breakfast Cereal "Health Nuggets" Prepared in Ed Jasper's Plant

The breakfast cereal "Health Nuggets" is certainly a "home" product.

In the fall, or early spring, the seed wheat is planted on the big wheat ranch of Ed Jasper in the Valeria district. In the course of time it comes to maturity, is harvested, finds its way to Mr. Jasper's mill at Island City, comes out a finished product, is done up in attractive four pound packages, through local distributors it finds a place on the grocer's shelf and eventually comes to hundreds of breakfast tables in the Grande Ronde valley.

For more than two years, Mr. Jasper has been putting his cereal on the market and it has found an ever increasing volume of sales. At first, the nuggets were ground out by the use of a small mill out at the farm, but this proved to be too small, too costly and altogether inadequate. There is now in operation in Island City, a very sizable plant, with machinery of Mr. Jasper's own designing and arranging, and placed according to Mr. Jasper's own ideas. So well did he plan that, during the two years the mill has been running, only one or two minor changes have been necessary. The present plant has a capacity of from 10 to 12 bushels per hour.

This year Mr. Jasper is using the Federation wheat. He first started out with the old stand-by Forty-fold, used the club wheat, Hybrid No. 128.

The grain is first placed in a hopper from which it is carried to the screening machine, where the white caps are removed and as much of the other foreign substances as possible. It is next taken through the Carter disc cleaner, where foreign grains, such as wild oats etc. are removed. The hardest things of all to get rid of, according to Mr. Jasper, are the bits of the cob and when these are the size of the grains of wheat, they remain with the wheat until they pass through the blower, which is the third process.

After this cleaning process comes the grinding. After passing through the first grinder, the material is sifted and the graham flour taken off in a separate receptacle. Two more grindings are necessary until the material reaches the finished state. The complete process requires about ten minutes time.

In inspecting Mr. Jasper's plant, one is impressed by its compactness, efficiency and cleanliness.

The produce from this mill finds its way to the consumer in two different forms, "Health Nuggets" and Graham flour. As stated, the former is marketed in four pound packages, and the latter in five and ten pound sacks. The La Grande Grocery company has handled its distribution in this county.

Mattress Shop Offers Variety Of Products

Twenty-five years of experience in mattress making and weaving provides the background for the La Grande Mattress Shop and Weaving Works, located at M and Hall, east of the flour mill. The business, housed in a modern structure with a floor space of 1,500 square feet, is managed by Charles Edwards, and he is assisted in the work by members of his family. Mr. Edwards opened his place here some 11 years ago, and since that time has built up a successful business.

At present mattresses are made and in between Minam and Wallowa.

The history of the mill throughout, from its founding in 1907 by Mr. Palmer, and through the seven years under which it has been operating as the Bowman-Hicks Lumber company, has been one of progress. New processes are adopted when they are found to be superior to ones already in use and additions are made to the plant whenever they are required.

H. N. Ashby, of La Grande, is general western manager of the company, with headquarters here, and Dan R. Tanner is superintendent of the Union and Wallowa county plants and logging operations.

on special orders, the company specializing in rebuilding and recovering mattresses and in upholstering overstuffed furniture, also in weaving, particularly rug and colonial rugs. According to Mr. Edwards, the mattresses made by his company are on par with any others, coming up to their standards and competing with them in price. Everything is done under state inspection and a high standard is maintained, with sanitation carefully provided for.

There is about \$2,000 worth of modern machinery in operation at the mattress and weaving plant, arranged in the various departments of the building.

Religion in the Navy

Religion plays an important part in the United States navy. Divine services are held on board ships and shore establishments having chaplains every Sunday. Among the 75 chaplains in the navy practically every denomination is represented. Giving worldly is voluntary in all military organizations.

Much of the petty trade of rural Mexico is still done by barter. "Give me an egg's worth of salt and I'll give you a woman will tell a grocer."

SPARKLING FOUNTAINS OF VITALITY

BUY IT BY THE CASE

From Your Nearest Dealer

It's economy to buy our health giving beverages in case lots—and then, too, you will always be prepared for unexpected guests as well as for planned parties.

Coca Cola Olympic Club Near Beer Sodas

See Our Exhibit at the Home Products Show

COCA COLA BOTTLING WORKS

LOOK OVER OUR WANT ADS FOR BARGAINS

Whose Birthday or Wedding Anniversary Comes in June?

1929	JUNE							1929
SUN	MON	TUE	WED	THU	FRI	SAT		
1	2	3	4	5	6	7	8	
9	10	11	12	13	14	15	16	
17	18	19	20	21	22	23	24	
25	26	27	28	29				

OUR FLOWERS ARE A HOME PRODUCT

Our spacious greenhouses and gardens, located on the west end of Adams Ave., produce flowers and potted plants of every variety. Our home grown flowers are available every month of the year—for all occasions they are the perfect gift for all ages.

See our exhibit at the Home Products Show.

Clark's Florists

1115 1/2 Adams Ave.

Attend the Home Products Show

JUST Quality BUTTER

—THAT'S ALL

One Name—One Product—One Quality

Ask For

MEADOW HARVEST

Made in La Grande by

UNION CREAMERY CO.

Nothing Finer Than Our

Bakery Goods

Bread and Rolls

In making Mother Hubbard Bread we take extra care to see that the ingredients are the best obtainable. We want this bread to be safe for growing children—and now many La Grande mother's insist that their dealers supply them with Mother Hubbard for they have found it is just the thing for the hungry boys and girls.

Every week we feature different rolls—you will always enjoy giving the family something different now and then and our rolls will fill the bill.

See our exhibit at the Home Products Show.

Gwilliams' Electric Bakery

Across from Observer Office

Masterpieces of the Baker's Art

Tell us what you want in the cake line and if it can be made anywhere we can make it right here in La Grande for you. Special, color, designs and decorations to suit any occasion is one of our services to this community. We feel a little like bragging when it comes to cakes—the next time you want something real special, let us know and you will not be disappointed.