

\$5000 HOME TO BE ERECTED HERE

George Richardson Takes out Permit for New Residence on Pennsylvania.

A permit for the second \$5,000 residence to be taken out in La Grande during this month was issued by City Recorder J. E. Stearns last week to George Richardson.

Mr. Richardson is erecting a modern one and a half story dwelling place on Pennsylvania between Cedar and First. Cameron and Hager are the contractors.

This permit brings the total for the year to \$69,410 in La Grande.

FIVE-DAY WEEK RECOMMENDED AT 4L SESSION

PORTLAND, Ore. (Special)—Recommendations that the entire lumber industry of the United States balance its production with consumption of its product by the general adoption of a five-day working week was the leading subject discussed by the 4L board of directors at its 21st semi-annual meeting held here last week. Facts and figures regarding foreign and domestic market trends, as well as economic changes, marked the deliberations of the board, which is composed of 12 employers and 12 employees in the lumber industry of the Pacific northwest.

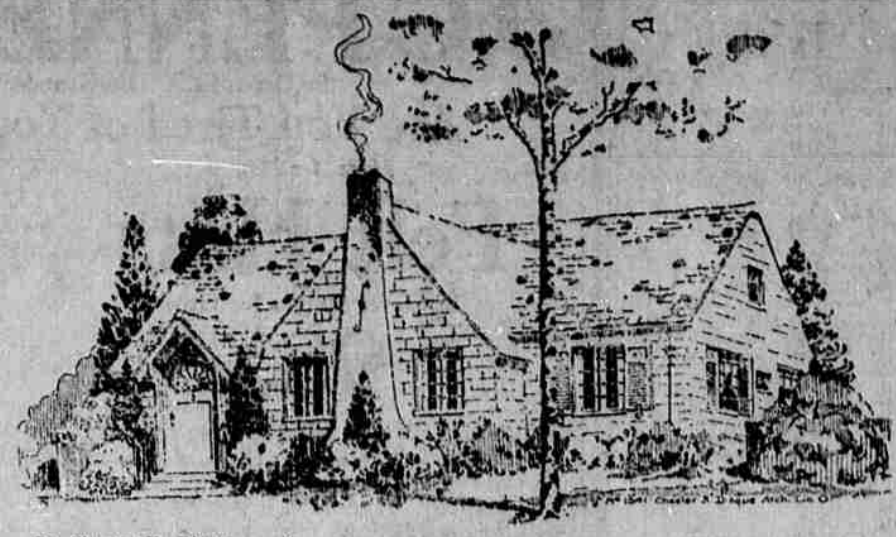
That the 4L board considers the subject of national importance, as well as to the northwest, it voted the following resolution to the National Lumber Manufacturers association, Washington, D. C., and also to all regional lumber associations in the south, California and other lumber producing sections of the country:

"That, whereas, the problem of adjusting supply to demand is the most serious one now confronting the lumber industry, be it:

"Resolved, that the 4L, through its Board of Directors, recommend to all the regional Lumber Manufacturers' associations in the United States the establishment of a national 8-hour day in the lumber industry, and the board commend the attitude of these employees in the Northwest who have patiently and loyally accepted the conditions imposed on them by the necessary curtailment which this 8-hour industry has practiced by running a five-day week, and otherwise shortening the operating time, while already on a shorter day than that in effect in other competing territories."

W. C. Buegnitz, 4L president, was in the chair. He reported steady progress and increased activity of the organization. Group disability, old-age pensions, unemployment, wood promotion and other subjects of industrial interest were discussed by the board.

A COLONIAL COTTAGE



By Chester H. Disque

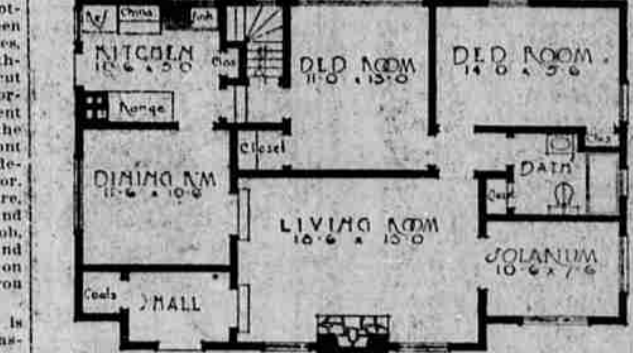
The white side walls of this cottage demand the weathered green projecting roof of wood shingles. This color scheme being strengthened by the dark red wire cut brick chimney with its white mortar joints. The curves of the bent chimney iron are repeated in the railing at the steps to the front door and again in the unusual design of the fan light in this door. Highly polished brass hardware, consisting of door knockers and large handle instead of door knob, is used on the front door and brass is again used in the ball on top of each newel of the iron railing.

The interior arrangement is found to be very distinctive, inasmuch as the entrance hall, dining-room and kitchen are on a level a few steps above the balance of the house. This condition not only permits the popular difference in floor levels, but also allows the garage to be contained in the basement beneath this portion without an excessive amount of excavation. Although this is a six room house on one floor, a minimum amount of hall space has been devoted to the hall serving the bath and bedrooms. One panel door are most appropriate in this case and are used throughout, being provided with brass hardware as specified for the front door and are stained a light olive green to match the balance of other inside woodwork.

There is an abundance of closet space and many other features are included, such as rolling screens, hardwood floors, hard wall plaster, quartz glass in the solarium, cement floor in basement and warm air heat.

It is estimated that the cost of this house is between \$6000 and \$8000, exclusive of heating and plumbing.

Coley stalks or leaves remove the odor of onions from hands, dishes and kitchen utensils.



Lumber Orders Not Up To The Output Increase

SEATTLE, Wash. (Special)—While the new business accepted by West Coast lumber mills for the week ending May 11 exceeded the current production by 4.77 per cent the average of orders in excess of production since January 1 is now 5.30 per cent, according to the West Coast Lumbermen's association. New business continuing to come to the industry, although in heavy volume has not kept pace with a gradual production increase during the past sixty days.

Studies made by the association on identical mill reports show that orders have been 5.51 per cent less during the first twenty weeks of this year than last. Production during the same period has averaged 7.22 per cent below that of last year. Inventories are low and unfilled orders high.

Production, orders and shipments at 207 mills in the Douglas fir region were reported, for the week ending May 18 to the association as follows:

Mills	207
Production	194,227,475
Orders	203,561,875
Shipments	208,749,814
Orders were 4.77 per cent over production and shipments 7.47 over.	

A total of 293 mills, whose production, orders and shipment records for four weeks past are complete at the association office, reported the following for the week ending May 18:

Production	191,780,752; orders 197,456,102, and shipments 207,163,499 board feet. Detail of orders and shipments as reported by these mills follow:
Orders:	
Tail	\$1,913,332
Domestic Cargo	66,853,646
Export	37,021,740
Local	11,607,385
Shipments:	
Tail	\$4,211,618
Domestic Cargo	75,496,562
Export	35,787,934
Local	11,607,285

Unfilled orders for these mills total 750,409,390 board feet at the close of the week or nearly 30 days cutting for these plants.

270 mills reported production of 221,786,245 board feet for the week ending May 18 or 51 per cent of their rated capacity amounting to 274,098,393 board feet. 264 mills produced last week 220,253,229.



A modern Colorful Roof—in a few hours!

"MODERN", is the decree of today's trend in roofs. With a large, colorful selection of Certain-teed Shingles to choose from; with an experienced staff of roofing men. Our service is equipped to put a charming new roof right over your old one, at a most reasonable price.

Certain-teed Shingles (Mineral-Surfaced)
Phone or write now for full data on our service.
Van Petten Lumber Co.
Phone M. 732.

THE GARDEN

HEALTH VALUE OF BEETS

The health giving properties of the beet are seldom considered except when it is eaten in the form of "greens" but it has important qualities in the diet. It has one of the largest potassium contents of any of the common garden vegetables. Potassium salts have an important function in the body. They are found to a large extent in the soft solid tissues such as the muscles, in the blood corpuscles and in other organs, particularly some of the glands which secrete fluids necessary to good health.

Scientists tell us there is a relation between the craving for salt and potassium. "Without salt," one scientist declares, "we should have a strong disinclination to eat much of the vegetables rich in potassium." Potassium tends to increase sodium elimination, sodium being one of the constituents of salt. Scientists seem to agree that we are accustomed to eating too much salt with our food and the potassium salts tend to strike a balance by driving out the salt.

The potassium content of the beet is 353 per cent. Potassium salts occur in all vegetables but are especially rich in the beet.

Compared with the beet, the carrot has 237 per cent.

The beet composition so far as food value is concerned in other respects is as follows: proteins, 1.8 per cent; fats, .1 per cent; carbohydrates, 9.7 per cent.

So in eating tender young beets and the more mature vegetables

Pioneer Roofing

Economical - Lasting

Your Choice of Many Colors

Sawyer-Holmes Mercantile Company

Phone MAIN 17

That Odd Job Of Wiring

No matter how small the job of wiring may be, we will give it our prompt attention... And you may rest assured that whatever we do will conform with the rigid requirements of the fire underwriters. The materials will be up to standard and an experienced electrician will do the work. It doesn't pay to tinker with electric wiring. The risk is too great—have an expert change those wires.

ELECTRIC SERVICE STORE
1412 Adams Ave. - Phone Main 124.
H. E. Williams

New Fixtures for Old

Perhaps your present electric lighting fixtures were installed years ago when the science of modern lighting was in its infancy. Great strides have been made in designing the electric chandeliers to give beauty and also much more efficient lighting qualities.

These new units are here for you. See them today—they are priced reasonably.

"You Phone For Us—We'll Wire For You."

H. & S. ELECTRIC CO., Inc.
Sommer Hotel Bldg. Phone Main 127.

Do You Need Cement or Lime?

We can supply you any quantity—from a pound to a carload.

Call us for any building materials—paint—or wall paper. Quality right—prices right.

HOME LUMBER & COAL COMPANY
Phone MAIN 248
Successors to Claude C. Pratt Lumber Co.

How Does Your House Look Inside?

Ceiling Spotted? Walls Faded? Woodwork Stained?

You can't afford to let the house "run-down" in interior appearance—and it's so easy and inexpensive to have it redecorated to look pretty, fresh and clean. All our new wallpapers are on display now—lovely new patterns—and we will be glad to estimate the cost of papering and painting one room or the whole house. Our workmen are expert and we guarantee your complete satisfaction. Just phone that you'd like an estimate—there's no obligation.

BUGG PAINT CO.
Elm St.
Decorators --- Contractors --- Paints & Supplies

Be color-correct

Use Acme Quality Paint, Varnish and Lacquer. This is the latest, most popular shade of color, correctly used, both inside and outside the home. It is up to us to know our colors.

You cannot afford to choose colors inadvicely. Only quality paint can be authentic in color, beautiful and enduring.

Just be sure the ACME QUALITY label is on the paints you buy and you will be color-correct. An ACME color scheme brings you authentic harmonies in the latest, most popular shades. And it brings you lasting harmony—for ACME colors retain their beauty, insure years of service.

You cannot afford to choose colors inadvicely. Only quality paint can be authentic in color, beautiful and enduring.

Just be sure the ACME QUALITY label is on the paints you buy and you will be color-correct. An ACME color scheme brings you authentic harmonies in the latest, most popular shades. And it brings you lasting harmony—for ACME colors retain their beauty, insure years of service.

Because we like to give our customers the top quality in any product, we sell ACME QUALITY Paint, Enamel, Lacquer and Varnish—a finish for any need inside or outside your home.

It is spring-time to decorate now. Let us advise you.

ACME QUALITY Paint-Varnish-Lacquer

W. K. Gilbert Co.

Forced Underfiring with the Iron Fireman

Saves 15 to 50 % on fuel costs.

Ask about the De Luxe Model for Homes.

Fred Spaeth

"Plumbing & Heating"
Montgomery Ward & Co. Are Next Door to Us.

SPLINTERS

No. 24 Official Publication of THE VAN PETTEN LUMBER CO. Vol. 8

Our ear of oak flooring will be in town tomorrow or Wednesday. Come down and look this flooring over if you are contemplating a new floor in your home.

Milo Smith just re-roofed the home of Ben Noyes on Washington Street with our CERTAIN-TILED Red-Glo Shingles. Drive around that way and look the roof over.

It is some consolation to a barber to know that he is in close touch with the heads of many organizations.

Hans Nielsen is putting up the framework on the first of the Dutch windmills across the street from Smith's garage. We are anxious to see what one of them looks like when finished.

Sow in the time of ear to bulb that little fence. Nothing adds beauty to a place like a little fence or some inexpensive trellis work.

FAIRY STORY: Once upon a time there was a prospective car buyer who walked around the automobile of his choice without once kicking the tires.

When you buy your screen door or wire screen from us ask for a fly swatter. We will give 'em away as long as they last.

"You can buy it on easy payments—"

*Dinna try to fool me. There's naa such thing as an easy payment."

VAN PETTEN LUMBER CO.