

### John N. Willys Goes To Europe To Visit Plants

NEW YORK, May 23.—John N. Willys, president of the Willys-Overland company and chairman of the foreign trade committee of the National chamber of commerce, sailed recently on the Borussia for a two weeks' inspection tour of the company's factories in Manchester, England, and Berlin, Germany. The primary objective of the trip is to consult with the company's European executives on plans for handling the greatly increased Willys-Overland overseas business.

"In the first four months of 1929," said Mr. Willys, "we exported 17,002 Willys-Knight and Whippets. This is a new high record. April exports totaled 4,325 cars and indications are that May exports will show better than a 50 per cent gain over May of last year."

"In excess in foreign business are widespread. Not only Europe but South America, Australia, New Zealand and the Far East are giving us large volume of orders. Numerous foreign distributing points are ordering from 25 to 250 per cent more cars than last year. Immediate plans include the export of a large volume of the new 1-1/2 ton Whippet Six commercial units besides the line of passenger cars in which six cylinder sales show a marked increase."

### President Eight Roadster Stages Amazing Climb

With twelve men packed in the trunk and clinging to the running boards and fenders, a stock eight roadster recently staged an amazing hill climbing feat by ascending a 47 per cent grade on a test hill near Alhambra, California. The car was driven by Ab Jenkins, whose holding is breaking records with Hudson cars.

The hill, located on the outskirts of Alhambra, is nearly a quarter of a mile long and rises steadily with more than a 40 per cent grade, the steepest pitch measuring 47 per cent. Several thousand people who had gathered to see the demonstration of The President Eight's power saw Jenkins take his car up the hill repeatedly carrying ten to twelve people.

Carrying only four passengers The President sped up the steep grade in second gear. To prove that the achievement was not merely a matter of skillful driving, a bystander who was asked to take the wheel negotiated the hill with the same certainty and ease as Jenkins.

To prove the safety factor in Hudson's amplified action four wheel braking system, Jenkins several times brought the car down the hill carrying the same twelve passenger load which he made the climb, stopping and holding the car on the hill as the descent was made.

On account of the extreme lightness of this type of body, and the low center of gravity found in this model, Hudson engineers have found it practicable to incorporate an overdrive, which makes it possible to combine safety with the tremendous speed which this car attains.

By means of special construction which makes it possible to lower the back of the seat to the floor, it is possible to convert the entire rear of the car into a very comfortable bed.

nearest object for support. He coughs and coughs in a series of short, sharp bursts without drawing his breath until the end of the spell, when he draws in a long breath with such a force that a loud whooping sound results. During this spell tears are in his eyes, his face becomes red or even purple, and the veins stand out on his head and neck. This performance may be repeated several times in quick succession until the child gasps or vomits, spitting up a plume of mucus, after which he seems relieved and is perfectly normal for a longer or shorter time. It is very striking to see how suddenly a child can recover from such a severe spell of coughing in which he may even lose consciousness. Two or three minutes after the paroxysm is over he may be playing about as usual, apparently perfectly normal. The number of these paroxysms may vary from 10 to as high as 100, or in very severe cases to even 150 in 24 hours. In untreated cases of whooping-cough, the paroxysmal stage lasts from 2 to 7 weeks and sometimes as long as 12 weeks.

### HEALTH

#### No Age Exempt From Whooping Cough Commonest During Spring And Early Summer

By Benjamin Tappan, M. D., Babies Milk Fund Association, Baltimore, Md.

Whooping-cough is a very widespread and a very serious disease. Any illness that kills over 10,000 children a year in this country alone can scarcely be dismissed as of no consequence. Most of these deaths occur in children under the age of 5. The chief reason for avoiding whooping-cough as long as possible is because the younger the child, the more liable he is to die. When you consider that out of every 100 children under 5 who die in this country, taking into account all possible causes of death, 3 out of each 100 die as a result of whooping-cough, you must admit that it is worth while taking some trouble to avoid it, and that it is worthwhile protecting others from it.

Whooping-cough is commonest during the spring and early summer months, but some cases are always present at any time of the year. There is no age at which the disease cannot occur, but the vast majority of cases are found in children between the ages of 2 and 7.

There are a certain number of children who have what we call a natural immunity to the disease, which means that they are able to withstand the ordinary exposure without catching whooping-cough. Unfortunately, we have no way of knowing ahead of time which children are immune.

In the typical case, the disease may be divided into three stages, the course of which is briefly as follows:

The first stage, called the stage of invasion or the catarrhal stage, is characterized by a dry cough, sneezing and redness of the eyes. There is no fever, usually, and the cough is much like any other cough, not having developed the characteristics that appear later. Unfortunately, in this stage the disease is very infectious and yet is extremely difficult to diagnose. If a physician examines the child at this period and can find no signs at all of bronchitis or of any other condition that would be liable to cause such a cough, whooping-cough should be suspected, particularly if the cough is getting steadily worse and if there are cases of the disease in the neighborhood or in the school that the child attends.

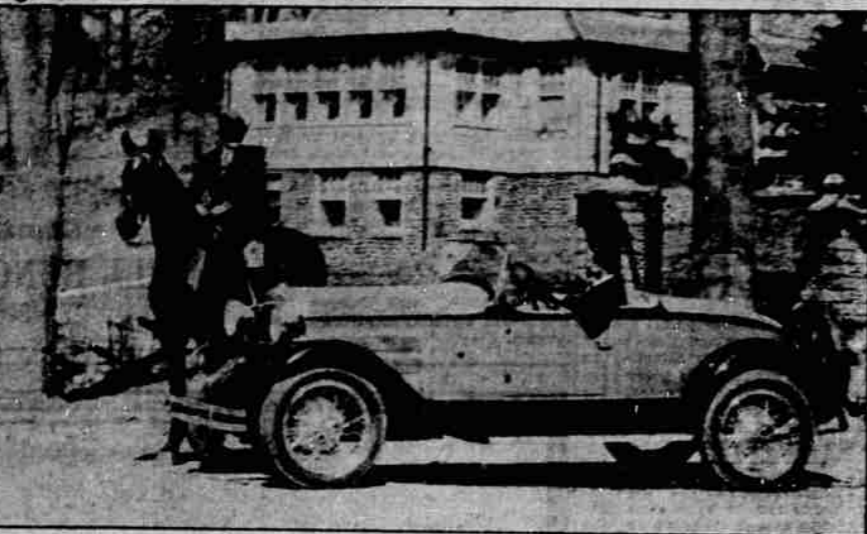
The first stage passes gradually into the second stage, which we call the paroxysmal or spasmodic stage. The cough now comes in definite spells, in which the child coughs so hard that frequently he runs to his mother or gasps the

### Six Dodge Cars in One Family



A big parade of Dodge Brothers cars starts when this family decides on a motor outing. S. M. Cook (extreme right) of Chico, Calif. has a Senior, and his four sons and one daughter have other Dodge models. Since last July, Mr. Cook has purchased nine Dodge cars, and since 1917, he has owned 16 cars of that make.

### NEW ESSEX MODEL



The most recent addition to the 1929 line of the Hudson Motor Car company is this flashy, ultra-stylish, special "eighty" speedster mounted on an Essex the Challenger chassis. The body, custom built by Hiddle and Sharp, is low and suggestive of the fastest of race cars. It is equipped with a folding windshield and there is a surprising large "fumble seat" in the rear deck. A top and side curtains are included as part of the standard equipment.

The car comes in a variety of colors and all bright work is chromium plated as on all Greater Hudson and Essex the Challenger models.

The sudden popularity of Hibbles registers in inscribing their names in several Chicago hotels was attributed to the inactivity of last year.

### Plymouth Plant Creates Record For Production

Production of less cars a day would mean months from the time its first car was manufactured to the record recently established by the Plymouth Motor Corporation at Detroit. "This is not only a record for the Plymouth," according to A. Van Der Zee, general sales manager, "but the entire industry, no other car ever reaching such an enormous production in such a short period of time."

"Although every effort is being made to meet the demand for cars, orders continue to be in excess of production figures," he says. "At the Plymouth plant, which is one of the most modern in the industry, everything is being done to install the latest automatic machinery and time and labor saving devices to speed up production in order to meet the growing demand for the Plymouth. The speed of the assembly lines has been gradually increased until now a complete car is coming off every thirty seconds."

"The unusual demand for the Plymouth car is proof of the fact that the motor buying public is becoming more and more experienced in the finer points of automobile construction and that it appreciates real quality in a low priced car."

AUNTIN, Tex. (AP)—What started as a holiday for Mark W. Austin, secretary of Governor Moody, has become profitable. He began with a few chickens in the back yard. In the last two months he sold 27,000 eggs from his 625 hens.

A man named Speed, arrested for road driving in Liverpool, Ia., was represented by Attorney Swift. The only thing needed to complete the case would be the jurisdiction of the Gale jurist, Judge Days.

### BEFORE MIDNIGHT

#### SUNDAY PROGRAMS

The National Broadcasting company program for Sunday night follows: 6:15 to 6:45, transcriptional concert; 7:45 to 8, Melodie; Pacific Coast and Rocky Mountain stations on the NBC chain include: KSL, KOA, KGO, KFI, KPO, KOMO, KGW. Time after NBC programs will be devoted Sunday to church services and musical programs.

The American Broadcasting company program for Sunday night follows: 7 to 8, Vic Meyers recording orchestra; 8, piano recital; 8:30 to 9, Hurper's corner; 9 to 10, Salon orchestra; 10 to 11, dance music. Pacific Coast stations on the ABC chain include: KEX, KJR and KGA.

Other stations on the air Sunday night include: KNX (7, screen personalities; 8, features; 9, concert); KVI (musical programs); KPRC (7, features; 10, Amos and Andy; 10:15, dance music).

MONDAY PROGRAMS  
NBC: 7 to 8, In Town; 8 to 9, symphonic; 9, musical program; 9:30, Plantation Echoes; 10 to 11, chamber hour.  
ABC: 7, orchestra; 8, "Musical Gems"; 9, feature program; 9:30, string quartet; 10, "Hour on Broadway"; 11 to 12, Golden Gate Gypsies.

KNX: 7, features; 10 to 1, dance music.  
KPRC: 7, features; 8, Blue Monday jamboree; 10, Amos and Andy; 10:15, dance music.

Washington State college is the first land grant college to be granted a charter by Phil Beta Kappa, honorary scholastic fraternity, which is 122 years old.

**East Oregon Fast Freight, Inc.**  
Over Night Express Service at Freight Rates  
Insured Carrier  
**Auto Freight Terminal**  
Phone Main 673 1413 Jefferson Ave.

### The GENERAL TIRE

—goes a long way to make friends



**Playing no Favorites with Big Mileage**

Big claims won't produce big mileage, but after rolling along on a set of Generals month after month you can look to your speedometer for the real big mileage story.

Users' records all over the country prove that General plays no favorites in rolling up big mileage. . . . Easy riding comfort, safety and distinctive good looks all contribute to General's outstanding preference among car owners, but in the final analysis mileage is a tire's strongest good-will builder.

### JACK ALLEN SUPPLY Co.

### Look Over Our Want Ads for Bargains

**Known the World Over**

## DUNLOP TIRES

Sold on Easy Terms

Our new plan of selling Dunlop Tires puts them within the reach of all. No need now to buy an inferior tire when you can buy a genuine first grade Dunlop by making a small payment down and then paying the balance in divided installments.

The name Dunlop alone assures extreme high quality but we sell you quality plus a guarantee that takes away all risk of high mile cost no matter what happens.

Need Tires? Get our price on a set of four.

**Iron Clad Guarantee**

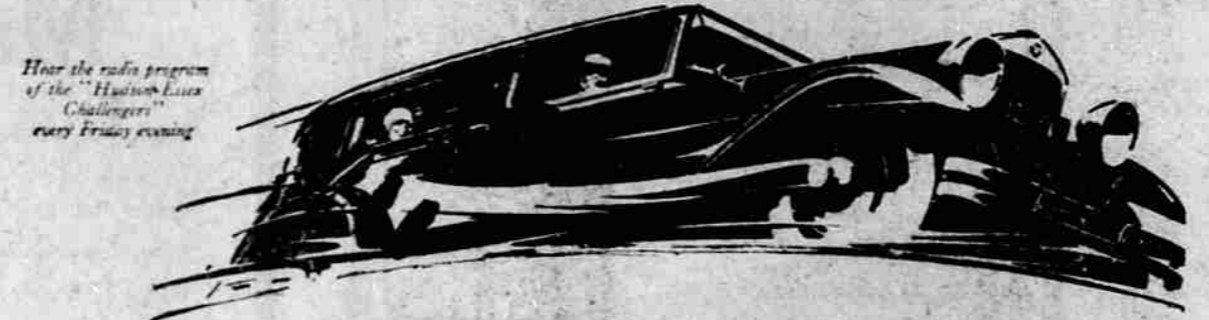
Car Painting by an Expert  
Lacquer Man

## Playle Oil Co.

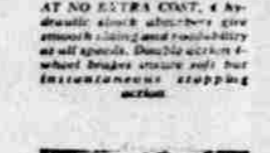
SUPER SERVICE STATION  
Stalcup & Zimmerman  
Cor. Adams St. and Greenwood  
"Always as Near as Your Phone."

# ESSEX THE CHALLENGER

A Wide Variety of Colors at no Extra Cost



## COMPLETENESS that challenges the Finest, Costliest Cars..



Big values, easy to see, easy to buy, easy to maintain, are giving Essex the greatest business it ever enjoyed—the outstanding "Six" of motor history—the season's sensation.

Here is a big, adult-size "Six"—fine to look at—roomy and comfortable. There is such a wide variety of colors that no matter what your choice, you may have almost individual distinction, at no extra cost. Ask for a ride and WATCH THE ESSEX.

Hydraulic shock absorbers and new type double-action 4-wheel brakes are standard—they do not cost one cent extra. The same with radiator shutters, glare proof rear view mirror, air cleaner, windshield wiper, safety lock, chromium-plated bright parts. Add up for yourself the extras Essex offers at no added cost and you will see above \$100 in extra value in those items alone.

With its Super-Six motor, challenging up to 70 miles an hour and economy averaging 18 to 20

miles to the gallon and upward, Essex challenges also in fine car comfort, fine car completeness and fine car luxury of appointment, convenience and detail.

**Easy to Buy FOR INSTANCE, in this city your First Payment, with your present car included, may be as low as \$300, and your monthly payments \$38.87.**

Your present car will probably cover the entire first payment. The H. M. C. Purchase Plan offers the lowest terms available on the balance.



## BLUE MOUNTAIN GARAGE

M. A. HARRISON, Mgr. Opposite P. O.