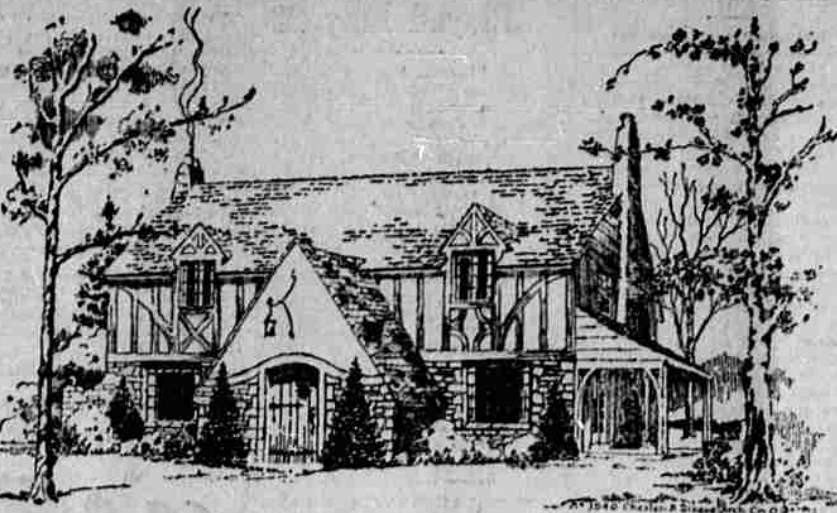


### 80 Pct. Gain In Construction Is Noted in April

Official reports made to S. W. Straus & Co. of building permits issued or plans filed in 599 leading cities and towns in the forty-eight states indicate an unmistakable upward trend in building activities at this time. While plans filed in New York City, prior to the signing of the Multiple Dwelling Bill by Governor Roosevelt were doubtless of abnormal proportions, the figures for the rest of the country clearly demonstrated that the trend, temporarily at least, is upward. April permits granted in the 599 cities totaled \$355,146,731 compared with \$237,249,525 in April last year, the gain being 50 per cent. With the \$279,174,265 in plans filed in New York excluded, there remained \$77,972,466 for the rest of the country, a gain over last April of 5 per cent.

A similarly encouraging conclusion is reached when a study is made of the seasonal variation. The total of plans and permits officially reported in March this year was \$408,657,002; the gain from March to April, therefore, was 32 per cent. This was in contrast with the normal seasonal variation between the two months, which is a 1 per cent decline. Examining New York City, we find the upward trend from March to April was 18 per cent, which is the approximate normal variation for these two months in the territory indicated.

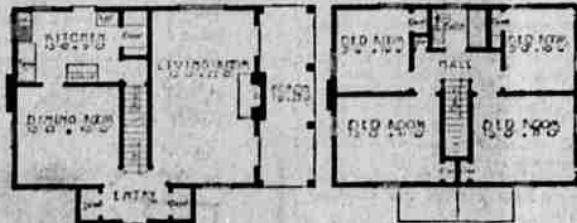
### POPULAR HALF-TIMBERED DESIGN



By Chester H. Disque

The above sketch owes its origin to an ancient English tavern. The broad entrance gable with its low sweep roof, successfully ties the house into its surroundings in a most natural manner, creating a very domestic or homelike feeling.

The broad areas of the stucco work are relieved by the half-timbering of rough-sawn unstained oak and a feeling of solid and permanent construction is accom-



plished by the introduction of the slender or cement blocks of random sizes and shapes, representing stone, which are spray-painted with light gray waterproof cement paint.

The specifications call for slate or shingles of various colors with a large proportion of dark purples being used, or dark reddish brown flat tile of random widths. Steel casement windows are used throughout and are painted a deep rust color so as to harmonize with the roof and weathered woodwork of the half timbering, porch and main entrance door.

The floor plans of this house are very compact and is a practical layout as may be readily seen by the fact that four good sized bedrooms with closets in each are to be found on the second floor. The porch floor and basement are cement while oak is used in the living room and dining room and rift sawn yellow pine in the kitchen and bed rooms on the second floor; tile floor and base being used in the bathroom.

All the interior doors are of the one panel type and are provided with a good grade of statuary bronze hardware. No ceiling fixtures are used in any room, the lighting being accomplished in all cases by means of portable lamps and wall brackets. Such items as rolling screens, warm air furnace, tile hearth, brick mantel, enamel plumbing fixtures, built-in tub and

medicine cabinet are to be found in the specifications.

It is estimated that this house can be built for between \$6000 and \$8000, exclusive of plumbing and heating.

### 74 To Graduate From Baker High On 28th of May

BAKER, Ore., May 20—The graduating class of Baker high school will consist of 74 members this year according to the report of Principal Fred Wolf. These seniors will take their final examinations next week. All who make their credits will receive a diploma the night of commencement which will be Tuesday, May 28. Following is the list:

- Althea A. Allen, Norva Inman, Gene Inon, William Beard, Durward Best, Walter Jacobson, Donna King, Ellen Bond, Graham F. Kadau, Marjorie Baird, Noble Hostwick, Marie Kirkland, Maxine Lewis, Margaret Baird, Sealy V. Carson, Jerry Louise Lewis, Geneva Landroth, Beatrice Cochrane, Eileen Cockrane, Kendall Lott, ridge, Myrin Crockett, M. J. Llancher, Violet Muxy, Lily Dale, Harry Day, Louise Melvin, Dolores MacFarlane, Henry Dunstan, Louel Irvington, Doris MacFarlane, James McCann, Beryl Engstrom, Delray Funk, Elton Nelson, Geraldine Phillips, Joseph Freeman, Marjorie Fong, Clementine Phillips, Julia Alice Putnam, Marion

### FIND IT HERE

Copy for this column must be in by 9 a. m.

#### GRADUATION

Is one time in life of the girl and boy when just the right kind of a gift is necessary. The careful selection of suitable gifts for the graduates is a special feature with Richard's Art and Gift Shop. They will show you the very latest and most appropriate gifts for both the girl and the boy graduate. They invite you to see the beautiful line of imported costume jewelry just received for this occasion. 5-20-27.

#### HOSE SPECIAL

See our window, Melville's. 5-20-27

#### NOTICE TO CONTRACTORS

Sealed bids will be received on the following project by the Oregon State Highway Commission in Multnomah County Court House, Portland, Oregon, at 10:00 o'clock a. m., Thursday, May 23rd, 1929.

The work consists of the construction of a maintenance building at Ontario, Malheur County, Oregon.

Proposed blanks, plans and specifications may be obtained at the office of the State Highway Commission, La Grande, Oregon. Oregon State Highway Commission. 5-15-29

Do you have a piano in your home? If not, send your children to the Eastern Oregon Music Co. for free piano lessons. No obligations. 5-20-27

#### BEAUTIFUL LEATHER

See the attractive things in hand tooled and imported leather just received for the graduate at Richard's Art and Gift Shop. 5-20-27

#### PLANTS—PLANTS

See Mrs. Wilson at MacMarr's (formerly Stones) for all kinds of plants. 5-20-27.

Hemstitching, petting, buttonholes, etc. Norton's Kiddle Shop.

#### GIFTS FOR THE GIRL GRADUATE

Beauty vases, candy jars, perfume bottles, vanity sets, powder-puff boxes and India prints at Melville's. 5-20-27

#### LAWN MOWER SPECIAL

See us first, Melville's. 5-20-27.



First: When is a man thinner than a whingle?  
Second: That's a hard one; when is he?  
First: When he's a shaving.

A doctor some time ago declared that death is no more painful than a bad toothache, but somehow this assurance does not seem to sell us the idea.

He: "Well, my father has an-

other wife to support now."  
She: "Heaven! Is he a bigamist?"  
He: "No, but I just got married."  
Judge: "I understand that you prefer charges against this man."  
Garage Man: "No, sir. I prefer cash, and that is what I had him brought here for."  
"Do you think he'll make a good husband, Amy?"  
"Sure, kid, ain't he already educated to goin' down town for his breakfast?"  
"How long had you known your husband before you were married?"  
"I didn't know him at all. I only thought I did."



### inside—outside

Inside your home—outside your home, color is "the thing" today. You are judged by your tasteful use of color. you are assured the top quality which means lasting life in color, whether it is the exterior or interior you are painting.

But however charming your home is when just decorated in this new vogue for color, only quality colors can make it retain its charm. That is why we recommend ACME QUALITY Paint, Varnish and Lacquer. A very fine color scheme can be arranged that will be suitable for your house. We will be very glad to aid you in the selection of the proper colors.

Colors must be durable to retain their harmonious effect. In ACME QUALITY Paint, Varnish and Lacquer

"THE HOUSE OF COLOR"

W. K. Gilbert Co.



### REBUILD

for Modern Beauty

TIME and weather are the relentless enemies of your home . . . no matter how well your house was built it is sure to show the ravages of these two foes. Let us help you renew the beauty and increase the value of your home by remodeling it this spring. Call us for an estimate.

Monarch 100% pure Paint and Fuller's Kalsomine.

### HOME LUMBER & COAL COMPANY

Phone MAIN 248  
Successors to Claude C. Pratt Lumber Co.

### That Odd Job Of Wiring

No matter how small the job of wiring may be, we will give it our prompt attention. And you may rest assured that whatever we do will conform with the rigid requirements of the fire underwriters. The materials will be up to standard and an experienced electrician will do the work. It doesn't pay to tinker with electric wiring. The risk is too great—an expert change those wires.

### ELECTRIC SERVICE STORE

1412 Adams Ave. -- Phone Main 124.  
H. E. Williams

### Hot Weather Is Here!

### You'll Want That Refrigerator Now



Before You Decide—See

### THE NEW SILENT KELVINATOR

SO SILENT . . . so startlingly quiet even in starting and stopping . . . that you will watch this New Kelvinator and wonder whether it is running.

And coupled to silence, a host of tested, proven features including the Cold Keeper for quick freezing of desserts, new flexible rubber trays for quick ejection of ice cubes, temperature watchman and fully automatic electric operation.

Let us tell you about Kelvinator's attractive ReDisCo monthly budget plan, by which you may enjoy Kelvinator at once. K-32

### NATE ZWEIFEL

THERE ARE KELVINATOR ELECTRIC INSTALLATIONS FOR EVERY COMMERCIAL PURPOSE

### It's a Modern APARTMENT if it has an ALL-STEEL GENERAL ELECTRIC.



THE apartment hunter of today demands a truly modern apartment—and now she applies a new test. As she skims through the "suites for rent" she checks those which say "equipped with a General Electric Refrigerator."

Progressive owners and builders meet this new requirement gladly and at a profit by capitalizing upon the prestige and the reliability of the General Electric Refrigerator.

The new all-steel General Electric Apartment Model is automatic in operation, exceptionally quiet, economical to operate. Its mechanism, mounted on top, is permanently oiled and

hermetically sealed. It has a temperature control. It carries the General Electric two-year service guarantee.

The new all-steel, warp-proof cabinet is an exclusive General Electric feature. Built like a safe, its carefully fitted door retains the close fit that shuts heat out. The apartment model is especially low priced. Come in and examine it at our display rooms.

### GENERAL ELECTRIC ALL-STEEL REFRIGERATOR

### W. H. Bohnenkamp Co.

### SPLINTERS

Official Publication of THE VAN PETTEN LUMBER CO. Vol. 2

If you lost a key Saturday in front of the Post Office, call our office and we can tell you where it is.

A Hen House Maxim—An egg a day keeps the axe away.

Attention Farmers—We have almost anything you want in clear fir small timbers and heavy dimension. Lengths up to 22 feet.

HOUSEHOLD HINT: If you have the habit of striking matches on the furniture, always strike underneath, for the top is usually too shiny for successful use.

Our Screen doors

are here. Many styles and many sizes to pick from. Prices are lower in those that are "the best."

"Willie, if I saw a boy beating a donkey, and stopped him, what virtue would I be showing?"

Willie: "Brother—by love."

If you have a low spot in your lawn that causes the soil to become acid, sprinkle a little hydrated lime over the lawn and wash it in. We carry hydrated lime in 10 pound paper bags at 30c a bag.

### VAN PETTEN LUMBER CO.