

Speedway's Ban on Women Lifted; Two Enter Racing Cars

OLIS, May 11 (AP)—An old as the Indianapolis speedway—that women off the track and will end this year. In own cars entered in race May 30, and a manager for Louisiana racing champion.

car, and now seeks a pilot. Mrs. M. A. Yagte of Philadelphia is the owner of the car Ray Keech, former speed champion, will pilot. Mrs. Alice Hoffman-Trobak of Paris is Chiron's pit manager. Mrs. Batten brought her car to the local track in condition for the race.

Keech held the mile straightway record until it was shattered several weeks ago by Major H. O. D. Segrave of London. Keech finished fourth in the 500-mile race.

Batten, widow of driver who went down in her Vestris last winter, her husband's

Old Reliable Prune Fills New Role



Prospects of a record-breaking Coast prune crop this year, together with a concerted drive by hospitals and medical authorities to promote prune consumption as health aid, brings high optimism to orchardists this spring. Surveying the crop situation in a 1929 Buick sport roadster, these experts of the California Prune & Apricot Growers Association are discussing with nurses the recent adoption of prune dishes as a major diet in San Jose Hospital, situated in "prune capital" of California.

last year, and was runner-up for driving honors during the season. Since the speedway began operations 17 years ago women have been refused entrance to the pits and track. Whether the pit rule will be lifted for Mrs. Hoffman-Trobak has not been determined. Chiron said his chances to win will be reduced if his pit manager is eliminated because of the sex ban. Only two women ever have ridden over the uneven bricks of the two and one-half mile oval, Mary Bostwick, a feature writer of the Indianapolis Star, and another who was ejected before she had much of a thrill.

SURETY BOND IS PROTECTION TO TIRE BUYER

"The Surety Bond which each Dunlop tire is bonded and guaranteed is developing some interesting incidents," says Doyle Zimmerman, of the Playle Oil Co., local Dunlop representative.

"This bond," continued Mr. Zimmerman, "covers the user's tire against almost every possible hazard for a period of one year. It covers even accidents and abuses which the motorist knows was his fault. This last provision has given rise to these unusual incidents of which I speak.

"One owner of a high powered car equipped his machine with a full set of bonded tires. Just one month afterwards his car figured in a crash and one of the tires was damaged beyond repair. He reported the accident to the dealer and in a few minutes was out of the store with a brand new tire replaced at no additional cost to him. He still doesn't understand what happened.

"Another motorist bought a full set of bonded Dunlops. Then just control of his car at the top of a hill, slid to the bottom, smashed into a curb, tearing a big hole in a new front tire.

"Here's a sweet news," he told the Dunlop dealer. "A brand new

Shipments of Dodge Trucks Show Big Gain

Regaining a gain of 77 per cent in shipments of commercial cars and trucks for March compared to February, the truck division of Dodge Brothers is increasing production facilities to meet the record breaking demand from domestic and foreign markets. In carrying out this production schedule, a record of seven months' standing was broken with the shipment of 331 trucks on March 30th, exceeding any single day since August 22, 1928. The export of 1,735 units set an all time record for March shipments to foreign markets.

"The rapid construction of paved roads and wide highways, and the manufacturing facilities to build trucks particularly adapted to every line of business are awakening executives to the possibilities of motor transportation never dreamed of before," said Howard E. Sneathen, director of Dodge Brothers truck sales. "Operators of truck fleets are finding expansion profitable and necessary in a competitive market that demands economy, speed and dependability in transportation.

"Six cylinder engines, four wheel brakes and four speed transmissions on the heavier types of Dodge trucks provide speed and safety necessary for the most economical distribution of merchandise, whether it be on the country highways or congested city streets.

"The fifty-one types of trucks built by Dodge Brothers represent five capacities ranging from the light delivery merchant express to the heavy duty three ton truck, and meet the requirements of 98 per cent of all transportation. Hundreds of different truck types can be furnished from these capacities and types by varying equipment, and enable the company to offer the most extensive truck line in the industry."

Prove Ability Of Studebaker Spring Shackles

The ability of Studebaker's patented ball bearing spring shackles to stand up under the most severe type of service is emphasized in a recent statement made by Ralph Hepburn, the noted racing driver. Hepburn was one of the pilots who drove four Studebaker President eight's in new world speed and endurance records in the 30,000 mile run held at the Atlantic City speedway last summer. Since the completion of the run he has been driving No. 1 roadster—the car which finished the 30,000 miles at 26,326 minutes—on a tour of the country that has taken him through 29 states and registered more than 52,000 miles on the speedometer.

"The ball bearing spring shackles on my car are functioning perfectly, without the least noise and with no appreciable wear," Hepburn said. "To the best of my knowledge the only attention they had was ordinary lubrication at the completion of the 30,000 mile run, when they were examined by Studebaker engineers. Since then they have had no attention whatever, in spite of the fact that during my travels in the south this spring the car has had the hardest kind of service resulting from detours made necessary by flooded roads."

The same condition is reported by Ab Jenkins, transcontinental record breaker and another of the 30,000 mile run pilots. Jenkins is touring with the second of the two roadsters which covered 30,000 miles of battered board speedway and finished three minutes behind the leader. Jenkins' roadster has traveled more than 51,000 miles, but as in the case of Hepburn's car, the ball bearing shackles have had no other attention than inspection and lubrication at the end of the gruelling test run.

Home has been variously defined as a roof over a good woman, and also where unwashed dishes are in the sink.

Daytona Beach Speedway? The city of Daytona Beach, Fla., scene of many speed contests, has become so "gasoline-minded" that a group of men there are discussing the erection of a mile, banked gravel speedway, to be completed in time for the 1930 beach speed tournament. The speedway would stage a 100-mile championship event in conjunction with the beach trials. It is their plan to make the winter race for speedway drivers and cars an annual affair, and to hold three smaller races on summer holiday dates for Class B drivers and cars of the southeastern states.

"See here!" said the zealous traffic cop, "Keep on the proper side of the white line."

"What line?" inquired the motorist. "I can't see any white line."

"Well, ain't ye got any imagination?"—American Mutual Magazine.

They Come With Late Models Traffic Cop: What's the idea of balling up traffic like this? Why don't you use your noodle? Sweet Miss: Didn't know the car had one.

NASH '400'

Leads the World in Motor Car Value

\$1145

DELIVERED, FULLY EQUIPPED, NOTHING MORE TO BUY!



Twin-Ignition Performance

22% MORE POWER 5 MILES MORE PER HOUR IN SPEED 2 EXTRA MILES GALLON OF GASOLINE

Lower, Delivered, Completely Equipped Prices

THE Nash Motors Company employs one of the greatest engineering organizations in the automobile industry. This is evidenced by the advanced design found in the Nash "400" series.

The Nash "400" Twin Ignition motor produces 22% more horsepower, 5 miles per hour more speed, and 2 extra miles for every gallon of gasoline, as contrasted to the same motor with single ignition.

This great feature and many others are available to you at delivered, fully equipped prices substantially lower than you would pay for other cars of the same or lower factory price.

This is true because Nash factory-

equips each "400" model with the very finest equipment purchased at low factory-volume prices.

All Nash "400" Special and Advanced Six models are equipped with Bijur centralized chassis lubrication which automatically and scientifically lubricates all vital chassis points with a single depression of a foot pedal.

In addition, bumpers, hydraulic shock absorbers, spare tire lock and tire cover come with each Nash "400", without extra cost.

Don't think of buying any car today until you check its delivered, fully equipped price against the Nash "400" delivered, fully equipped price.

Delivered, Fully Equipped Price Range on 18 Nash "400" Models, \$1086 to \$2451

McKennon Nash Motor Co.

806 Adams Avenue,

Main 650.

(1-17)-10



In trying to avoid a collision, Cyril crashed into another machine. He was careful but he had no insurance.

Why get in Cyril's class when you can have a Travelers Automobile policy big enough to pay any claim.

You can pay for your Automobile Casualty Insurance in convenient monthly installments.

Have us quote rates on your car—no obligation.

UNITED STATES INVESTMENT CO.

O. W. WARNOCK, Mgr.

Free Baseball Tickets

For the Ball Game May 19th

With Every

CAR WASH

During week starting May 12th.

DUNLOP TIRES

Easy Terms—Guaranteed Bond Get Our Price on a set of four

Playle Oil Co.

SUPER SERVICE STATION

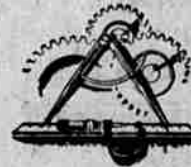
Stalcup & Zimmerman

one Main 165

Corner Adams St. and Greenwood

CHRYSLER

CHRYSLER MOTORS PRODUCT



HAIRBREADTH precision and custom care

A demonstration reveals surpassing results due to Chrysler's finer standards

CHRYSLER, by applying new and ingenious methods of scientific efficiency, introduced to volume production the fine precision standards heretofore associated only with hand-built cars.



The "75" ROYAL SEDAN, \$1535. Wire wheels extra.

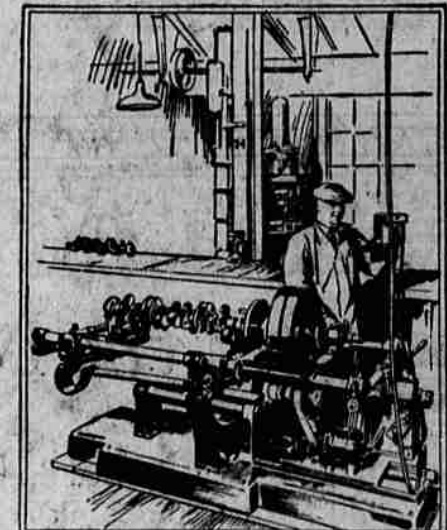
The man who buys a Chrysler Imperial, a Chrysler "75," a Chrysler "65," gets a car that is held to hairbreadth limits in every specification.

From raw material to finished product, Chrysler is applying to all phases of manufacture the

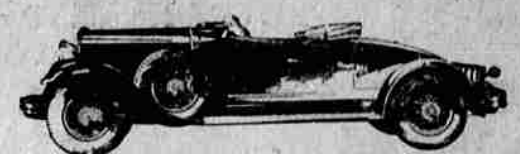
custom care and accuracy formerly possible only in costly hand-built cars. An elaborate system of inspections and tests safeguards the finest kind of craftsmanship, and makes certain that every part scales to the ultimate decimal of its prescribed weight and dimension.

The extreme to which Chrysler invariably goes in protecting quality and accuracy is something unique in the field of big production. Care guides skill in every move. Infallible instruments eliminate chances of human fallibility.

So it is that Chrysler cars, as they take to the road, are in every particular as fine and



Chrysler 7-bearing counter-weighted crankshafts are tested exactly for accuracy of both dynamic and static balance. This is only one of the many reasons for the smooth performance of every Chrysler motor.



CHRYSLER IMPERIAL ROADSTER (with rumble seat), \$2895. Wire wheels extra

fault-free as modern science and expert human craftsmanship can make them.

And as the natural outcome of all this standardized care and precision, plus the genius of Chrysler engineering, there is a distinct difference in Chrysler performance that is wholly and lastingly delightful. We invite you to take a demonstration and learn the difference for yourself.

CHRYSLER "65"—\$1040 to \$1145 Six Body Styles

CHRYSLER "75"—\$1535 to \$1795 Eight Body Styles

CHRYSLER IMPERIAL—\$2895 to \$3855 Nine Body Styles

All prices f. o. b. factory



THE CHRYSLER "65" TWO-DOOR SEDAN, \$1065

L. W. WEEKS Greenwood & Jefferson