

**GRAHAM-PAIGE  
OWNER PLEASED**

**Car Easy Running, Quiet and Smooth—Gas Mileage Is Excellent**

Graham-Paige, with its new line of 1929 models, continues to surpass production records, to meet the demand for the improved cars on five different chassis. March production of 3610 cars brought the total for the first quarter of 1929 to 25,284, nearly double the figures for the same period last year, when 13,125 cars were built.

A 612 model blue and ivory Graham-Paige was purchased for the Grande Ronde hospital recently from the Jennings Motor company. Its driver, Fred Mormon, manager of the hospital, has so far driven it 250 miles and announces that for a car of that price and weight he has never driven a more satisfactory one.

**Excellent Gas Mileage**  
"It is easy running, quiet, smooth. For a brand new car the gas mileage is excellent," Mr. Mormon says.

He mentions in particular the easy way in which it takes the bumps, the Chase mohair upholstery, the roominess, its elite appointments, the gas pump instead of vacuum tank and the air filler and gas filler.

The stop right now brakes also enter into the reason for Mr. Mormon's praise of the new car which he drives. For its type he thinks it superior to any he's ever driven and he's driven a good many, he says.

Mr. Jennings reports that Graham-Paige has brought out a two-door five-passenger sedan to complete the line of bodies supplied on the popular six-cylinder 112-inch wheelbase chassis, model 612.

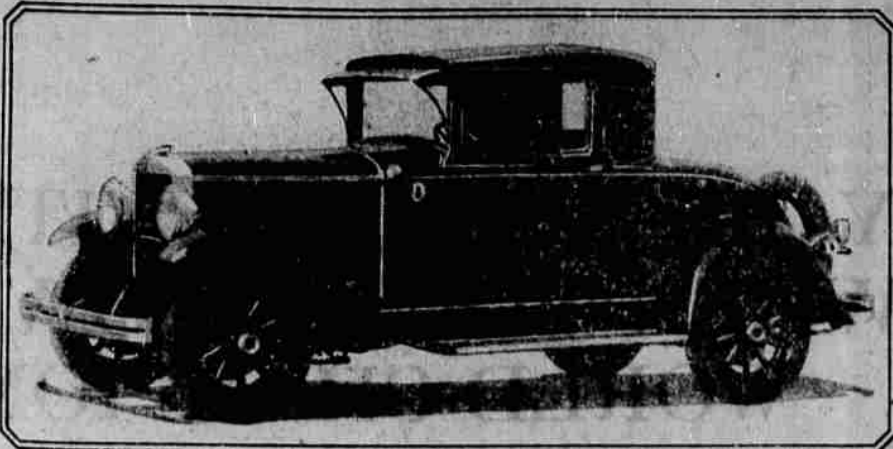
In style and comfort the new two-door closely follows the standards of the four-door model. Both exterior and interior carry the features that mark the full sedan type.

Standard equipment includes painted wood wheels, with 5.00-13 balloon tires; but the car may be obtained with steel or wire wheels—either five wheels with a spare tire carrier or six wheels with side mountings and a trunk rack.

The new sedan is finished in a light gray with moldings and reveals in a lighter gray, striped with emerald green. Both steel and wood wheels are in the lighter gray, emerald striped, while wire wheels are emerald green all over.

Of special interest to owners is the sliding arrangement for the two front seats. Passengers in either seat may, by releasing a convenient latch, roll forward, opening a clear passageway for those entering or leaving the rear compartment. The old draw-back of the two-door car—the inconvenience to front passengers who were compelled to get out of the car to admit others—is thus eliminated.

**GRAHAM-PAIGE 612 IN POPULAR TYPE COUPE**



The Graham-Paige, coupe model, with or without rumble seat for two extra passengers, was brought out after the automobile show season. Vera Jennings is the local dealer of Graham-Paige cars.

**ESSEX TOWS HEAVY LOCOMOTIVE**



Among the spectacular feats accomplished by Essex the Challenger, was the towing of a heavy freight locomotive at Nashville, Tenn. The powerful Essex motor emerged from the experiment none the worse, but the engineer of the locomotive was amazed. Avery Harrison is the local dealer for Hudson and Essex cars.

**Canadian-Mexican Link Seen In 1930**

SPRINGS, S. D. (AP)—The proposed Canada to Canal highway will, by the end of next year, connect Canada and Mexico with a concrete road, J. W. Parmley, of Ipswich, president of the highway association, predicts. By the end of 1930 the road will run from Brandon, Manitoba, to Mexico, opposite Laredo, Tex.

Eventually the association hopes to extend the highway to the Panama canal, touching nine countries. From Brandon it is to run through North and South Dakota, Nebraska, Kansas, Oklahoma and Texas, cross Mexico, Guatemala, Salvador, Honduras, Costa Rica and Panama.

Driving Instructor: Well, do you understand the car now?  
Beginner: Perfectly. There's only one thing I should like to ask: Do you put the water and the gasoline in the same hole?

**HARD TO REGULATE**

"How's your car running?"  
"Not so good; can't get her throttled down."  
"How's your wife?"  
"She's the same, thank you."  
—Carlisle Mercury

**Plenty of room  
in the NEW SUPERIOR Whippet**

An important advance of the new Superior Whippet Four and Six is "Finger-Tip Control"—one button in center of steering wheel which operates starter, lights and horn.



**T**HE larger bodies of the new Superior Whippet Four and Six afford more spacious interiors, with extra head room, leg room and elbow room.

The beautiful and ultra-modern design of the new Superior Whippet makes it the style authority in both the Four and light Six classes. Many tasteful refinements include longer lines, higher radiator and hood, chromium-plate and

sweeping one-piece full-crown fenders.

The faster speed and pick-up of the new Superior Whippet result from a higher compression engine, giving more than 20% added horsepower. Low consumption of gasoline and oil, and dependable performance, insure exceptional operating economy and minimum service costs.

WILLYS-OVERLAND, INC., TOLEDO, OHIO

**WHIPPET SIX COACH  
WITH T-BEARING CRANKSHAFT**

**\$695**

Coupe \$695; Coupe (with rumble seat) \$725; Sedan \$760; Dr. Lane Sedan \$800; Sport Dr. Lane Roadster \$830 (including rumble seat and extras).

**WHIPPET FOUR COACH**

**\$550**

Coupe \$550; 4-passenger Coupe \$580; Sedan \$615; Dr. Lane Sedan \$650; Roadster \$680; 4-passenger Roadster \$710; Collegester Roadster \$740; Touring Sport; Commercial Coach \$780. All Willys-Overland prices. J. & L. Toledo, Ohio, and specifications subject to change without notice.

**Gettings & Hanks**

Jefferson Ave.



**The Motorist's  
Guiding Star**

**WHEREVER YOU GO, FROM COAST TO COAST, YOU CAN GET TEXACO**

Nothing is more exasperating to the motorist who gives his car intelligent care than to have to mix different grades and qualities of gasoline and oil. He knows that the lubrication engineer who supervises the production of fine motor oil and high test gasoline eliminate just such haphazard methods in order to get an efficient product.

To make it possible for the careful motorists to have uniform quality always convenient, the Texas Company has expanded its facilities so that Texaco products can be had in every state in the union—the only gasoline and oil with a national, coast to coast, distribution.

**There Is Always a  
Convenient Texaco  
Station Near You**

Watch for the Texaco star—you'll find a courteous and trained dealer conveniently near you throughout Union and Wallowa counties—and all Oregon. Texaco stations must measure up to a uniform high standard of service as well as products. They know what your car requires—how to give you the most for your dollar.

The new motoring season is here. If your crankcase hasn't been drained of old oil, have it emptied and cleaned—put in a full measure of rich, pure, Golden Texaco. Your Texaco dealer will tell you why you are assured a smoother, longer-lived motor.

**Keep pace with modern transportation  
—Buy the New and Better Texaco Gas  
—Golden Texaco Oil!**

**THE TEXAS COMPANY**

AUDMER PLAYLE, Agent