

SOCIETY NEWS

With Easter Over, Social Life Will Resume Activity

Easter days have come and gone and with yesterday, the Easter day, a new year was begun all over Christendom. The significance of the Resurrection day in the beginning of life anew is greater to many than that of New Year's day on Jan. 1.

During the Lenten period social life throughout the nation was quieted but now, with the spring, comes an awakening from dormancy and many social affairs are soon to mature. For La Grande during the next few weeks a number of important social functions have been planned.

Easter events yesterday were in the form of sunrise breakfasts in churches, family dinners, quiet celebrations and the more spirited parties and easter egg hunts which children adore.

All the little Easter bunnies came to pay their respects yesterday and now all that remains for the kiddies is a joyous memory and the anticipation of the time when Easter will come again.

An event of Easter day was the wedding of Helen Walker, of La Grande and Charles Wells, of Huntington, at 2 o'clock at the South Methodist church.

The ceremony was performed by the Rev. W. S. Turgoyne and was attended by families of the bride and bridegroom. Mr. and Mrs. Wells will make their home at Huntington.

An evening of drama and music has been arranged for tomorrow night when the members of the La Grande Neighborhood club will have their husbands as their guests.

The program will begin at 8 o'clock and is in charge of Mrs. Donald Fague. It will include a one-act comedy, "Double Demon," by A. L. Herbert and musical numbers by Mrs. Florence Lynch Miller, Mrs. J. H. McNamee, Mrs. T. R. Maxwell and Miss Gladys Miller.

A business meeting will precede the program and will begin at 7:15 o'clock, announced Mrs. F. L. Meyers, president.

Piano Students Present Recital

An enjoyable recital of piano students was given Saturday afternoon at the Westview Inn by the pupils of Mrs. Clyde Webb with parents and friends as guests.

The program was as follows: "Laughing Waters," by Blake, and "Cradle Song," by Blake, Kay Andrews.

"School Bell," by Grey and "Canoë Ride," by Williams, Helene Young.

"The Elf and the Fairy," by Benson and "In the Country," by Burgenmuller, Nola Ray Mosby.

"Minuet," by Hayden and "Old Folks at Home," by Foster, Mildred Young.

"Fancies Dance," by Williams and "The Clock," by Williams, Constance Bailey.

Dance, Nola Ray Mosby.

"Playing Franks," by Lemont and "Song of the Drum," Hollister Rhine.

"The Contented Bird," by Howe, and "The Sleigh Ride," by Schmidt, Margaret Young.

"Giants," by Rogers and "Venetian Serenade," by Mathling, Fern Robertson.

"On the Blue Lagoon," Mathling, and "Fishe's Good Night Song," by Brown, Eva Daugherty.

A beautiful centerpiece of sweet peas and daffodils, following the color scheme of orchid and yellow, was used on the table from which Mrs. George J. Tins served when she entertained the members of the P. S. club with a delightful bridge afternoon at her home Saturday. Twelve were present.

Nut cups of orchid and yellow and Easter bunnies for favors were also used.

Mrs. Rex-Green was awarded



Sugar useful in diet

Famous food scientist recommends it

THERE are several plain facts that people who are dieting for weight control should remember.

No one under 25 years old should be at all under weight.

Extreme dieting is dangerous to health and may result in permanent injury to the delicate tissues and organs of the body.

Sugar, in dessert, is a useful part of the meal.

Eminent authorities emphasize the dangers of fasting and they should be borne in mind by every person who wishes to remain healthy. One of America's leading food biologists advocates desserts containing sugar. "The value of the sweet," he says, "in addition to giving energy is in furnishing a feeling of satiation that helps relieve an empty, unsatisfied feeling."

Starving is dangerous, and each person should eat regularly a variety of healthful foods, especially cereals, fresh and canned fruits and vegetables sweetened to bring out the delicious flavors. Cereals, fruits and vegetables are wholesome and delicious. The best cooks are generous with sugar.

The Sugar Institute.

THE GARDEN

FRUITS FOR THE CITY LOT

Very few people living in the city suburbs or in small towns have sufficient space to raise all of the fruit that an average family can use. As space is at a premium with a city man, he may prefer to grow only a few varieties of favorites. The person living on the farm can set aside enough space to grow all of the different varieties of fruits, which are necessary to give a continuous supply sufficient in quantity for the average family.

A Hint for the City Man

The city man may have to tuck in his strawberry plants in front of and underneath the grapevine and thus get two crops out of the same space.

Strawberries will be followed by the earliest cherries and by currants, raspberries and gooseberries. Fifty bushes of each of the two best sort of currants, one hundred each of two varieties of raspberries and 25 bushes of some good gooseberry will, if well cultivated, furnish an abundant supply. One dozen cherry trees will be enough. One hundred bushes of the blackberry will supply two quarts a day for some weeks toward the close of summer.

Fruits for the Main Crop

Apricots, peaches, early apples and a few of the earliest plums will bring on the season of abundance which, with the later varieties of these fruits will last nearly until winter. Winter apples and pears, if placed in a cool fruit room or cellar in the fall, will last until the commencement of the new supply of strawberries.

To obtain this supply there should be five or six apricot trees, the same number of peach trees, 10 or 20 of plum, 10 or 15 of summer and autumn pears and as many more of winter varieties, the same number of summer and autumn apples, and from 25 to 50 trees of winter apples. Forty or 50 well-managed grapevines will contribute materially to the variety of fruit. One hundred grapevines, in a well-cultivated vineyard, will be sufficient to furnish all the fresh grapes wanted by a large family through the autumn and winter months.

Space Required for Complete Fruit Garden

The extent of ground required will be about 10 or 12 square rods for the different summer fruits, and an acre and a half or two acres for all the others except the winter apples. The early summer apples might be placed in between the winter apples as fillers, as these are less permanent trees.

When you begin to garden, have a definite object in view. Make a comprehensive plan of development.

Announcements

The Riverside Ladies Aid will meet Thursday afternoon, Apr. 4, at the home of Mrs. A. L. Huff, 806 Crook Street, with Mrs. Huff and Mrs. Fay as joint hostesses. All members and friends are cordially invited to attend.

MENUS

By Sister Mary

The following list of food diets for the sick may suggest others of the same type to you:

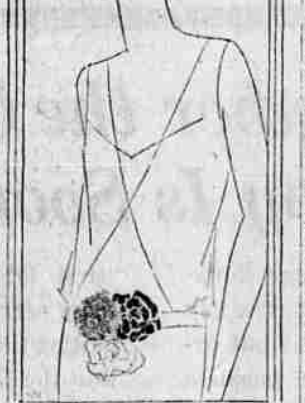
Breakfast: Orange juice, prune juice, sifted stewed prunes, sifted apple sauce, soft, well-cooked cereals with plenty of thin cream, milk, toast, cocoa made with milk and little sugar; soft cooked eggs poached or in the shell.

Luncheon: Cream of vegetable soup, meat broth plain and with strained vegetables, jellied bouillon and consommé, rice vegetable served with plenty of liquid, junket, custard, bread or cereal custard puddings, gelatin, Spanish cream, tapioca cream, soft cornstarch pudding, milk, or fruit juice.

Dinners: The same as luncheons with the addition of some refined and creamed meat or fish which has been broiled or roasted. The desserts should not be made too sweet. Honey is an excellent natural sweet source and can be used for sweetening desserts. Egg-nogs are nourishing and most beneficial when sweetened with honey rather than sugar and flavored with orange or lemon juice. Junket, ice cream and plain fruit ices and sherbets can be included among the desserts.

Spanish Cream

One and one-half tablespoons



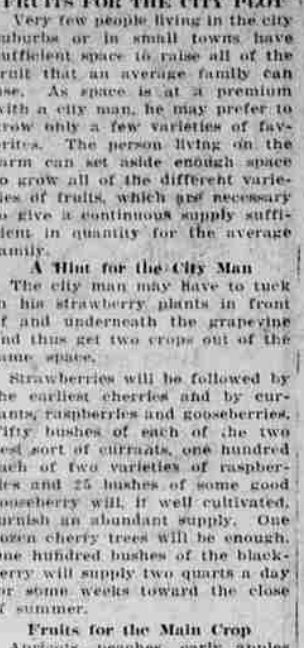
THREE VELVET tones, blue, magenta and green, emphasize and mark the normal waistlines of angeline silk net evening gown.

Not a Bathing Beauty



Mrs. Mary A. Brown is said to be the loveliest woman in the world and doesn't care who knows it. She is pictured here as she arrived in New York the other day to fill a circus engagement.

FLIERS SHOW LATEST STYLES FOR AVIATION



Above: Lady Heath (extreme left) with a group of her air minded sisters wearing the latest mode prescribed for the fashionable 1929 aviator. Center: Maude Holland wears an all-leather pilot flying suit. Lower left: Mrs. Helen Sheridan of Minneapolis chooses a cloth suit with heavy fur lining. Lower right: Marjorie Parzuber is wearing a polar flying suit suggested for those who plan to fly to the northland.

Neither will sodding bring about luxurious turf when the soil and conditions beneath are not right.

Summer flowering bulbs such as cammas, gladioli, dahlias, calladium, etc., should be looked over carefully. Excessive heat or moisture will start them into growth. Dampness and low temperature are apt to cause decay.

Avoid too much variety in mass planting, alternating or "salt and pepper" arrangement is not nearly so effective as grouping plants of each kind.

If you admire your neighbor's flowers and wish to have some as good, make sure you prepare the beds as well as he.

For front line or border planting especially, choose few varieties and plant more of them. The results will be more pleasing. Plant the taller things in the back of the border and with the lower growing ones alternating and the border plants in curves or groups. Never expect to get mass effect by straight-line planting.

Fertilizer of some kinds is like medicine. Given at regular intervals according to prescription, it will bring results. An overdose may kill.

Sharpen tools to prevent dull days.

Why not get a few houses where the birds can nest? A bath for the birds will give even more pleasure to you than to them.

Nobody wants to plant an oak—they seem so slow growing. Plant some, anyway. Others will benefit as we have.

TWO SHIPS COLLIDE

HORDEAUX, France, April 1 (AP)—The French steamship Ceylan was listing heavily as it approached this port today after collision yesterday in the bay of Biscay with the British steamer Clouddal. Wireless messages from

Announcements

The executive council of the County association of Parents and Teachers met Saturday afternoon at the home of E. A. Sykes to make plans for the county council meeting to be held in La Grande April 13.

Mrs. George Lyman, president, presided at the meeting.

The Riverside Ladies Aid will meet Thursday afternoon, Apr. 4, at the home of Mrs. A. L. Huff, 806 Crook Street, with Mrs. Huff and Mrs. Fay as joint hostesses. All members and friends are cordially invited to attend.

MENUS

By Sister Mary

The following list of food diets for the sick may suggest others of the same type to you:

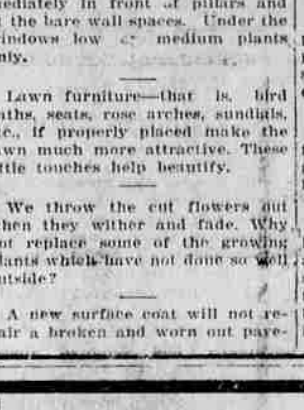
Breakfast: Orange juice, prune juice, sifted stewed prunes, sifted apple sauce, soft, well-cooked cereals with plenty of thin cream, milk, toast, cocoa made with milk and little sugar; soft cooked eggs poached or in the shell.

Luncheon: Cream of vegetable soup, meat broth plain and with strained vegetables, jellied bouillon and consommé, rice vegetable served with plenty of liquid, junket, custard, bread or cereal custard puddings, gelatin, Spanish cream, tapioca cream, soft cornstarch pudding, milk, or fruit juice.

Dinners: The same as luncheons with the addition of some refined and creamed meat or fish which has been broiled or roasted. The desserts should not be made too sweet. Honey is an excellent natural sweet source and can be used for sweetening desserts. Egg-nogs are nourishing and most beneficial when sweetened with honey rather than sugar and flavored with orange or lemon juice. Junket, ice cream and plain fruit ices and sherbets can be included among the desserts.

Spanish Cream

One and one-half tablespoons



Not a Bathing Beauty



Mrs. Mary A. Brown is said to be the loveliest woman in the world and doesn't care who knows it. She is pictured here as she arrived in New York the other day to fill a circus engagement.

Announcements

The executive council of the County association of Parents and Teachers met Saturday afternoon at the home of E. A. Sykes to make plans for the county council meeting to be held in La Grande April 13.

Mrs. George Lyman, president, presided at the meeting.

The Riverside Ladies Aid will meet Thursday afternoon, Apr. 4, at the home of Mrs. A. L. Huff, 806 Crook Street, with Mrs. Huff and Mrs. Fay as joint hostesses. All members and friends are cordially invited to attend.

MENUS

By Sister Mary

The following list of food diets for the sick may suggest others of the same type to you:

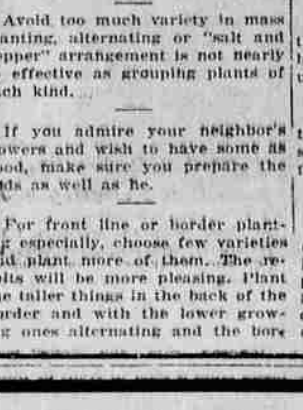
Breakfast: Orange juice, prune juice, sifted stewed prunes, sifted apple sauce, soft, well-cooked cereals with plenty of thin cream, milk, toast, cocoa made with milk and little sugar; soft cooked eggs poached or in the shell.

Luncheon: Cream of vegetable soup, meat broth plain and with strained vegetables, jellied bouillon and consommé, rice vegetable served with plenty of liquid, junket, custard, bread or cereal custard puddings, gelatin, Spanish cream, tapioca cream, soft cornstarch pudding, milk, or fruit juice.

Dinners: The same as luncheons with the addition of some refined and creamed meat or fish which has been broiled or roasted. The desserts should not be made too sweet. Honey is an excellent natural sweet source and can be used for sweetening desserts. Egg-nogs are nourishing and most beneficial when sweetened with honey rather than sugar and flavored with orange or lemon juice. Junket, ice cream and plain fruit ices and sherbets can be included among the desserts.

Spanish Cream

One and one-half tablespoons



Not a Bathing Beauty



Mrs. Mary A. Brown is said to be the loveliest woman in the world and doesn't care who knows it. She is pictured here as she arrived in New York the other day to fill a circus engagement.

Announcements

The executive council of the County association of Parents and Teachers met Saturday afternoon at the home of E. A. Sykes to make plans for the county council meeting to be held in La Grande April 13.

Mrs. George Lyman, president, presided at the meeting.

The Riverside Ladies Aid will meet Thursday afternoon, Apr. 4, at the home of Mrs. A. L. Huff, 806 Crook Street, with Mrs. Huff and Mrs. Fay as joint hostesses. All members and friends are cordially invited to attend.

MENUS

By Sister Mary

The following list of food diets for the sick may suggest others of the same type to you:

Breakfast: Orange juice, prune juice, sifted stewed prunes, sifted apple sauce, soft, well-cooked cereals with plenty of thin cream, milk, toast, cocoa made with milk and little sugar; soft cooked eggs poached or in the shell.

Luncheon: Cream of vegetable soup, meat broth plain and with strained vegetables, jellied bouillon and consommé, rice vegetable served with plenty of liquid, junket, custard, bread or cereal custard puddings, gelatin, Spanish cream, tapioca cream, soft cornstarch pudding, milk, or fruit juice.

Dinners: The same as luncheons with the addition of some refined and creamed meat or fish which has been broiled or roasted. The desserts should not be made too sweet. Honey is an excellent natural sweet source and can be used for sweetening desserts. Egg-nogs are nourishing and most beneficial when sweetened with honey rather than sugar and flavored with orange or lemon juice. Junket, ice cream and plain fruit ices and sherbets can be included among the desserts.

Spanish Cream

One and one-half tablespoons



Not a Bathing Beauty



Mrs. Mary A. Brown is said to be the loveliest woman in the world and doesn't care who knows it. She is pictured here as she arrived in New York the other day to fill a circus engagement.

PUTMAN'S

La Grande Exclusive Ready-to-Wear and Millinery

The vessel said the principal damage was above the water line and that this ship was in no danger of sinking.

STRADIVARIUS PURCHASED

PHILADELPHIA, Apr. 1 (AP)—The last violin made by Stradivarius has been purchased by Dr. Thaddeus Rich, concertmaster, with some 40 other rare instruments from the estate of Rodman Wanamaker.

PREDICTS WAR

BRIGHTON, England, April 1 (AP)—Seriously, the Rev. R. J. Campbell, just back from the

Lovely Women Are Now Wiser

They would not be without new wonderful MELLO-GLO Face Powder because it prevents large pores... stays on longer... spreads more smoothly and is famous for its purity. No irritation. Never gives a nasty or flakey look to the skin. Its new French process gives a youthful bloom and keeps ugly shine away. Try MELLO-GLO today. Glass Drugs, Inc. —Adv.

MILLIONS OF POUNDS USED BY THE GOVERNMENT

Same Price

25 ounces

KC Baking Powder

25 cents

For over 38 years

PURE AND EFFICIENT

ANNOUNCING!

An Amazing New Washer of World Famous Thor Quality Sensationally Low Priced!

\$5 **\$117.00** **\$8**

is the Sensational Price

- See It. Examine It. Note It's Sensational Low Price. Phone for a Free Demonstration without obligation In Your Own Home
- These Low Terms During April Only
- 1 Life Time Tub—oven baked porcelain enamel inside and out.
 - 2 Beauty—such as you have never seen in a washer.
 - 3 Wide Top Tub—the width of the tub itself.
 - 4 Rubber Guarded, Vibration Proof lid.
 - 5 New Speed—New Kindness to Clothes.
 - 6 Simple, Compact. Easy to operate. General Electric Motor.
 - 7 Big Capacity. Does entire washing in 2 hours.
 - 8 Famous Thor Quality.
 - 9 Amazing Low Price—\$30 to \$60 less than any washer of comparable quality.

Eastern Oregon Light & Power Co.

"Wash the Thor Way"