

### E. Spencer To Address Pupils Of Cove School

By Mrs. A. G. Conklin (Observer Correspondent)  
 COVE, Ore. (Special)—Carlton E. Spencer, of Eugene, who was for several years, registrar at the University but now is assistant director at the law school is expected to be in Cove Wednesday afternoon, Mar. 27, to address the student body. Mr. Spencer is visiting various schools in the state. Mr. and Mrs. George McDaniel attended the funeral Sunday at Union of Mr. and Mrs. Major South.

Mr. and Mrs. Tom Towle and two daughters who have been in Portland and Orchard, Wash., visiting for the last three weeks, returned to their home here Wednesday. They report having a delightful vacation and a nice visit with Mr. Towle's father, Bert Towle. Mr. Towle's father, J. A. Towle, who accompanied them, remained at Orchard with his son—Bert Towle.

Mrs. Henry Muir who has been critically ill here for the past three weeks is no better. Her little daughter, Rosemary is staying with the aunt of Mr. Muir's at Hood River.

and Mrs. E. E. Coad and brothers Carl and Robert. Carl and Robert drove to Eugene for him.

Mrs. Cora DeLong, who suffered a slight paralytic stroke a few days ago is convalescing.

Grant Conley returned Friday from three months in Southern California. During his stay there he visited his cousin, Mrs. George Fraser in Los Angeles. He also visited in Long Beach, San Diego, etc.

Fabrics used for sport wear are tweeds in great variety, plain jerseys and jerseys with woven designs. Invisible checks in blue and brown and soft neutral patterns are endorsed for the jacket ensemble. For sports and semi-sports are shown large and indistinct plaids. Bright red, oxford blue, and beige are presented for town and country coats. Lightweight, soft cashmere tweeds and basket weaves are suitable for travel coats and bordered tweeds for day time wear.

The proprietor of a Fayetteville, N. C. grocery found his cat dead. Employees told him a large rat had killed tabby.

### REBEL'S SON



Friday morning, March 24th the service at the Assension Episcopal church will be at the usual hour when two members, Mrs. Harriet Thomas and Mrs. Rosalind Sturges will be initiated into the order of the Daughters of the King.

The revival services at the Baptist church conducted by the Rev. A. B. Hall will close Friday evening, May 22.

Miss Alice Marquardt, the county nurse spent two days this week in Cove weighing and testing the school children.

Miss Jean Welmer, a student at Oregon State college, came home Thursday morning to spend her vacation with her parents, Mr. and Mrs. K. E. Welmer. Two other students—Kenneth Crawford and Merion Coon of the state college came up with her and went to their homes in Union.

The baby chicks have begun to arrive in Cove. The first shipment of 1,000 white leghorn chicks sent to G. Lund and Frank Williams, 50¢ to each. They came from Corvallis and out of 1024 in the shipment, only three were dead. Mrs. Joseph Fisher received 100 Plymouth Rocks Wednesday.

The regular Lenten service on personal religion was held at the rectory Wednesday afternoon, conducted by the Rev. P. F. Surges. Before the service a business meeting of the Daughters of the King was held at the rectory.

Francis Coad who is a student at the University of Oregon, came home early in the week to spend his vacation with his parents, Mr.

### THE (G)RUMBLE SEAT!



### Aquiculture, Like Agriculture, Is Seen As Source of Good Supplies

By Coleman B. Jones (Associated Press Science Editor)  
 WASHINGTON (AP)—Aquiculture is destined to become the main source of fish supplies, in the opinion of Lewis H. Radcliffe, deputy commissioner of fisheries, just as agriculture long ago became the chief reliance of mankind for vegetables and meat.

With the growing demand for water products rapidly cutting down the natural supplies, he believes the scientific study of fish, clams and oysters has demonstrated that the cultivation of such crops can be made "an established and attractive pursuit, capable of adding its quota to our harvest of the natural stock and replacing shortages."

The natural fisheries, he says, already have passed through two phases of exploitation in the last 50 years. First, the most desired species were taken in greater and greater quantities until the limit was reached and catches began to decline because of depletion.

Then, previously unused or neglected varieties were caught to make up the deficiency, and now most of these fisheries have reached or passed the limit of exploitation and catches are dwindling.

The only course left to take care of future requirements, he declares is the cultivation of desirable fish for market, and the success of that depends upon knowledge of their habits and needs, which is being accumulated by federal, state and university research workers.

While much remains to be learned about the amount and value of food an acre of water will produce in comparison with agricultural land, he finds that "glimpses here and there indicate that water areas can be made fully as productive as land areas and in some cases will far exceed the land in productiveness."

Placing the annual productivity of an acre of cultivated land at 140 pounds of beef or 200 pounds of pork, he cites figures gathered in the course of studies conducted by the bureau as evidence of the comparative value of water areas.

They show 100 pounds of oyster meats produced to the acre on the Atlantic coast; 122 pounds of fish in South channel, Cape Cod, and 145 pounds in Lake Pepin in the Mississippi river; 150 pounds of carp in cultivated ponds; 272 pounds of bluegill sunfish and 450 pounds of goldfish in the bureau's ponds at Fairport, Iowa, and 530 pounds of clams on the coast of Washington.

Group insurance for faculty members and employees has been provided by the University of Chicago, the school bearing more than half the cost of the premiums.

### Lindy, Anne May Honeymoon in Air

GLENDALE, Cal., Mar. 22 (AP)—With the arrival of Colonel Charles A. Lindbergh's "flying office" City of Columbus, at the Grand Central air terminal here, friends of the famous aviator today were speculating on reports that Lindbergh had the large and luxurious ship brought here for the purpose of using it to bring his prospective bride, Miss Anne Morrow, back to the United States following the wedding in Mexico.

FINAL MATCH SATURDAY  
 MILWAUKEE, Wis., March 22 (AP)—Percy N. Vollus, Chicago, defending champion and M. C. Walgren, Everett, Wash., Pacific coast champion, are to play the final match Saturday in the national amateur 15.2 ball game tournament. Both were undefeated with four victories each today, while the other contestants have each lost two or more games. If the leaders win today they are certain to be the final disputers over the 1929 crown.

MRS. BORAH IMPROVING  
 LOS ANGELES, Mar. 22 (AP)—Mrs. William E. Borah, wife of United States Senator Borah, who has been recuperating from a recent attack of influenza, was reported to be much better today. Her failure to appear as a guest of honor at a meeting yesterday was said merely to be a precautionary measure to conserve her strength.

STOPS COUGHS QUICKLY  
 Now, as during the past 50 years, Foley's Honey and Tar Compound stops coughs quickly, breaks up influenza, clears the throat of irritating mucus and phlegm, stops nervous hacking, and troublesome night coughs. Always dependable and efficient. Children like it—averts croup. Mothers endorse it—no opiates. All users recommend it—ask your druggist. Best for children and grown persons. Try it. Sold Everywhere. —Adv.

### 14 MEN IN HOSPITAL

DALLAS, Tex., Mar. 22 (AP)—With 14 men on the hospital list, Manager "Lena" Blackburn of the White Sox attempted to collect some kind of a team to battle the Any oleum floor can be made to look better by mopping it in equal parts of skim milk and warm water.

### OREGON STATE GLEE CLUBS ASSISTED BY THE COLLEGE ORCHESTRA PRESENTS

## "The Chimes of Normandy"

DIRECTED BY PAUL PETRI  
 With TED ROY and FLORA McCOY

La Grande High School Auditorium  
 Tuesday, March 26th, 8:15 P. M.

TICKETS ON SALE AT HIGH SCHOOL

## Grande Ronde Meat Co

Packers and Distributors of Mt. Emily Products  
 City Grocery and Market Main 75-50  
 Economy Grocery and Market Main 573-48  
 Hoover Market Main 755

## Baked Ham For Easter

What could be Finer than a Delicious Mt. Emily Ham for the Easter Dinner?

You Can Always Buy Our Smoked Meats and Lard at Wholesale Prices

Have You Seen "Jim Vaughn" At Work?  
 Many customers have told us how much they like the chops, steaks and roasts cut by "Jim Vaughn," the Electric Meat Cutter who always cuts your meat to an even thickness, leaving no bone chips, and sealing the meat as it cuts so as to retain the juice and flavor in every cut.

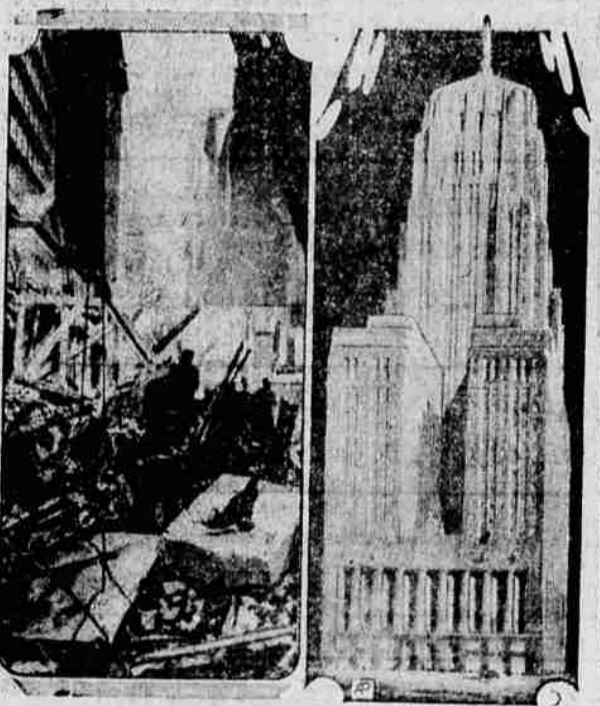
- Sugar Cured Hams ..... 28c Lb.
- Sugar Cured Lean Bacon Backs ..... 20c Lb.
- Sugar Cured Picnics ..... 17c Lb.
- Skinned Lean Bacon Backs ..... 25c Lb.
- No. 10 Kettle Rendered Lard—Pail ..... \$1.25

### GROCERY DEPARTMENT

Our Grocery Department is stocked with the finest of the Season's New Vegetables of the Best Quality at the Lowest Possible Prices.

- Apricots  
Del Monte  
Fancy heavy syrup—  
No. 2 1/2 tins—3 for ..... 89c
- Prunes  
Raised, dried and packed at Cove—  
a home product. 50c  
6-lb. bag
- Oregon Prunes  
Diamond W Brand  
Fancy fresh prunes in syrup—  
No. 2 1/2 tins—3 for ..... 50c
- Grape Fruit  
Royal Club Brand  
At a real saving  
No. 2 tins—5 for ..... \$1.00
- Lipton Tea  
Yellow Label  
Orange Pekoe—  
1-lb. tins ..... 75c
- Buck Wheat  
Richelieu Brand  
Pure old-fashioned buckwheat  
5-lb. bags ..... 35c
- Oranges  
Rose Brand  
Sweet and juicy—216 size. Special for  
Saturday only—  
3 dozen ..... 69c
- Jonathan Apples  
Faced and filled—  
Per box ..... 79c
- Crackers  
Snow Flakes and Honey-Made Grahams  
—family size square package. 79c  
2 for
- Tobacco  
Velvet—  
1-lb. tins ..... 75c  
Edgeworth—  
1-lb. tins ..... 89c  
This Special at Our Economy Store  
Main 573

### CHICAGO TRADE BUILDING WILL TOWER 44 STORIES



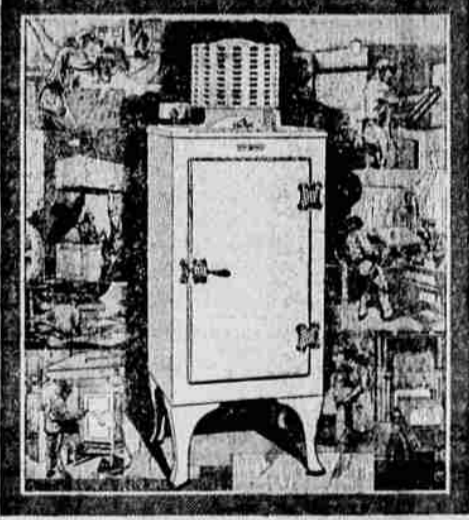
Chicago's old Board of Trade building is fast disappearing (left) and soon the towering skyscraper shown at right will rise.

### For That Spring Bridge Party

- Bicycle Playing Cards, Multi-color series 85c
- Multi-color, Set of two ..... \$1.35
- De Luxe Playing Cards, set of two ..... \$1.75
- Score Pads ..... 10c, 15c, 25c
- Sets of 4 Score Pads ..... 75c
- Whitehead Score Pads, each ..... 25c
- Decorative Bridge Sets, each ..... 35c
- Set of 4 Bridge Pencils and Table Numbers 85c
- Spring Tally Cards, doz. .... 35c
- Spring Place Cards, doz. .... 35c
- Dennison's Bridge Table Cover and Napkin Set, ..... 50c
- Prize Seals, box ..... 15c

La Grande Book & Stationery Co.  
 1114 Adams Ave., La Grande, Ore.

## GENERAL ELECTRIC PRESENTS the first ALL-STEEL REFRIGERATOR



## GENERAL ELECTRIC ALL-STEEL REFRIGERATOR

ANOTHER chapter has been added to the achievements of the engineers and scientists of the General Electric Research Laboratories. The same group of men who perfected the hermetically sealed mechanism of the General Electric Refrigerator, have now designed the first all-steel refrigerator cabinet.

This marks the greatest improvement made in the design and construction of refrigerator cabinets. New value has been built into the unrivaled General Electric Refrigerator.

General Electric has now made scientific refrigeration, which is vital to the health of the nation, possible for every home. Only a small down payment is required. The balance may be paid in easy and convenient installments.

The only way to appreciate the outstanding quality, the beauty, the great value of this new General Electric all-steel refrigerator is to see it. Come in today. It is now on display. Examine it carefully and let us explain how easily you can own one.

**\$215**  
 AT THE FACTORY

Listen in on the General Electric Hour, March 23rd, sponsored by the General Electric Refrigerator. This program is broadcast from 9 to 10 P. M. Eastern Standard Time over N. B. C. network of forty-two stations.

W. H. Bohnenkamp Co.