

### NASH MOVES UP TO FOURTH RANK

#### Announcement Comes on Birthday Anniversary of Charles W. Nash

KENOSHA, Wis., Feb. 22.—Letters and telegrams of congratulation, birthday cakes and personal remembrances came to Charles W. Nash from all points of the compass recently, when he rounded out his fifty-fifth year of active service in a busy world. But, delighted as this robust and kindly leader of America's industry was with these tokens of personal esteem, they were totally eclipsed by an official business tribute which arrived at about the same time and which brought with it proof of his great industrial success.

It came in the form of an official report from the highest tribunal of the American automobile industry, revealing that The Nash Motors Company has risen from ninth to fourth place among national automobile manufacturers, not including Ford, in the last six months of 1928, and since the bringing out of his new "400" series cars.

These official statistics, covering the automobile year which runs from July to July, are based on the dollars and cents business done by the various companies.

In this instance they show that in the first six months of the fiscal year, (July 1st, 1928 to January 1st, 1929) the universal and enthusiastic demand for the new Nash "400" Series cars has given Nash fourth position in the world's greatest industry and has brought about that dramatic climb from a place ninth in the American list a year ago.

The announcement serves to back up officially the great individual sales records which sent Nash to first sales place among all six cylinder cars in Greater New York for the entire year of 1928 and second only to Chevrolet in this highly competitive district, which brought Nash to first place among all the sales in the New Orleans and Memphis sales figures for the year.

Ham butter for sandwiches is a picnic accessory that may be made and kept in a cool place ready for several days. To make: chop both 1/4 ham and mix with almost an equal amount of butter. It is best to keep it closely covered and in a cool place.

### "OUR GANG" ANSWERS THE CALL OF THE OPEN ROAD



No one appreciates any more than these famous kids of movieland the advantages of both open and closed cars. The Chevrolet Landau has the advantages of both as it is convertible. In the "open car" are Jean Darling, Harry Spear, Landau and "Wheeler". The Landau holds Joe Cobb, Mary Ann Jackson and "Pete".

### HEALTH

#### BREAD AN "ACID" FOOD LEMONS, TOMATOES LEAVE "ALKALI" RESIDUE

By Hendrika J. Rosenberger, Dietitian

We hear so much in this day and age about "acid foods" that it is well to stop a moment and decide just what is meant. There are foods acid to the taste—lemons, oranges, grapefruit, tomatoes, sometimes. These are likely to be disregarded by the individual having an intestinal difficulty as injurious to him. Sometimes the list is much longer, and the patient enjoys re-creating the number of foods he cannot eat because they form "acid."

To understand this question of the reaction of food, it is first of all necessary to realize that the stomach normally contains and produces acid as part of the digestive process. When we are well, the kind of food we eat influences a little or not at all the quantity or quality of acid produced. The stomach lining secretes what is

needed, no more, no less.

As the food is digested, it breaks down into smaller and smaller units until finally, after it is used up, the cells for energy, we have a residue that is acid or alkali, according to the mineral content of the food eaten. This has nothing to do with taste. Bread, which certainly has no acid taste, nevertheless leaves an acid residue, due to the mineral elements contained. This is true also of meat, fish and fowl. Vegetables and fruits, with one or two exceptions, leave an alkali residue; lemons and tomatoes included; and milk is an alkaline food because of its calcium content. The foods that leave a neutral ash are butter, cornstarch, cream, lard, sugar and tapers.

If we eat too much of bread and meat, and not enough of vegetables, milk and fruits, the end-products of digestion are acid, and the body has to borrow from itself to neutralize this acid. This is not serious when done for a short time, but should people eat like that for a number of years, the effects most certainly would be harmful. One of the best storage places for alkali are the teeth, and eventually

### New Features In 1929 Oldsmobile Cars Explained

From an engineering standpoint one of the most advanced features incorporated in the 1929 Oldsmobile is the addition of pressure lubrication direct to piston pins. This full pressure lubrication has heretofore been a characteristic of high priced cars.

The necessity for a perfect system of lubrication readily can be seen when the results of rubbing two pieces of metal together is considered, the engine's point out. In the Oldsmobile engine each of the six pistons make 3,500 up strokes and the same number of down strokes in the cylinder each 60 seconds when the engine is generating 57 horse power at 3,000 revolutions per minute. This means that a piston travels the equivalent of 2,651 feet per minute.

This rapid movement of metal on metal is found on other vital parts of an automobile engine. These include the crankshaft and camshaft bearings, piston rod bearings and piston pins. All complete their cycle of action with every revolution of the engine.

The only protection these rapidly moving parts have against friction is the microscopically thin film of oil which separates the two pieces of metal from direct contact. The moving parts of a finely built motor are fitted with a clearance of only a few thousandths of an inch, therefore, oil should be forced into the bearings under pressure to assure that the proper lubricating film is maintained say the designers.

In designing the lubricating system of the 1929 Oldsmobile the engineers followed the best accepted practices although this increased the manufacturing costs. A gear driven pump, located at the bottom of the crankcase so that it is always primed, draws the oil through a mesh screen and sends it under pressure through a distributing main.

the designated system which includes the main highways of the nation.

The A. A. A. club executive said that during the last fiscal year improvements were completed on 8,184 miles of federal aid roads which had not previously been improved with federal assistance, while advanced stages of reconstruction was completed on 2,914 miles.

Mr. Francis said that it is a great tribute to the road-building program in America that it has been carried by the expenditure of huge funds without such scandals as have come in the wake of other public works improvement.

Citing many interesting side-lights on road building, the A. A. A. executive said: "Texas has the greatest mileage of roads of all down states with 188,000 miles in its borders. New York has more high type highways than any other state, with 11,000 miles of hard-surfaced roads. Illinois leads in cement pavements with 6,900 miles, while Indiana has the largest mileage of all types of hard surfaced roads.

A large, boneless piece of road which is slightly underdone may be reheated in the piece, by mashing enough potatoes to cover the meat with a layer about one-fourth of an inch thick. Season the potato with salt, pepper, a little milk and butter or drippings, spread over the meat, brush with beaten egg and dredge with crumbs. Put in a baking dish in a hot oven, heat until nicely browned.

Baron drippings add flavor to every food that is cooked in them, or in which they are used. The drippings are especially good in sauces for meats and vegetables. When added to the dressing for fowl and other meats, a particularly rich flavor is produced.

Celery, cut fine and added to cranberry jelly just before it stiffens, is very nice. This is molded and later garnished with celery curls.

### States Allotted Funds For U. S. Aid Road Work

Oregon will receive \$1,191,969 as its share of \$78,125,000 apportioned by the government for federal aid in road construction for the fiscal year which begins on July 1, according to C. E. Francis, director of the Oregon State Motor association, which is affiliated with the American Automobile association.

Mr. Francis, basing his statement on information received from the research department of the A. A. A. said that the funds will be apportioned on the same conditions that have governed past expenditures. In general, the states pay half the cost of federal aid construction, which is limited to

### There Is a Big Difference In Gasolines

Have you tried the Wet Gas, Dry, Green, Blue, Red, Quick Starting, Slow Burning, Anti Knocking.

If so fill with Veltex Crystal Clear, and you get all the best qualities in one. Veltex is the best gasoline on the La Grande market.

Let Your Motor Decide.

T. R. MAXWELL Distributor

Many Bargains Listed on Want Ad Page

# RIVERSIDES' NEW-LOWER PRICES

Staunch, honest quality and proven reliability have made Riversides the choice of millions of car owners. Join these millions—save money. Of all standard tires of equal quality not one is priced as low as Riverside.

Definite Mileage

Assures Protection



## GUARANTEED FOR 16,000 MILES

RIVERSIDE BALLOONS Full Size

RIVERSIDE HIGH PRESSURE Oversize

Guaranteed for 16,000 Miles

Guaranteed for 16,000 Miles

Size	Tire Price	Molded Circle Tube Price
27x4.40, 4-ply	\$ 6.05	\$1.15
28x4.40, 4-ply	6.10	1.17
28x4.75, 4-ply	7.85	1.40
28x5.25, 4-ply	9.55	1.65
29x4.40, 4-ply	6.15	1.20
29x4.40, 6-ply	8.00	1.20
29x4.75, 4-ply	8.15	1.45
29x4.95, 4-ply	8.70	1.55
29x5.00, 4-ply	8.50	1.45
29x5.25, 4-ply	9.80	1.70
29x5.50, 4-ply	10.65	1.85
30x4.50, 4-ply	6.95	1.35
30x4.50, 6-ply	9.10	1.35
30x4.75, 4-ply	8.45	1.50
30x4.95, 4-ply	9.05	1.65
30x5.00, 4-ply	8.70	1.55
30x5.25, 4-ply	10.05	1.75
30x5.25, 6-ply	11.75	1.75
30x5.50, 4-ply	10.85	1.95
30x5.77, 6-ply	13.65	2.10
30x6.00, 6-ply	13.65	2.10
30x6.20, 6-ply	15.15	2.45
30x6.75, 6-ply	17.50	3.00
31x4.95, 4-ply	10.60	1.75
31x5.00, 4-ply	9.05	1.65
31x5.25, 4-ply	10.35	1.80
31x5.25, 6-ply	12.35	1.80
31x6.00, 6-ply	13.85	2.15
31x6.20, 6-ply	15.35	2.55
32x5.77, 6-ply	14.05	2.20
32x6.00, 6-ply	14.10	2.20
32x6.20, 6-ply	15.65	2.65
32x6.75, 6-ply	18.25	3.10
33x6.00, 6-ply	14.35	2.25
33x6.20, 6-ply	15.95	2.80
33x6.75, 6-ply	18.85	3.20
34x7.30, 6-ply	22.05	3.75

Size	Tire Price	Molded Circle Tube Price
30x3 1/2, Os. cl., 4-ply	\$ 4.75	\$ .98
30x3 1/2, Os. cl., 4-ply	5.38	1.05
30x3 1/2, Os. ss., 4-ply	6.75	1.50
31x4, Os. ss., 5-ply	9.35	1.95
32x3 1/2, Os. ss., 4-ply	8.95	1.45
32x4, Os. ss., 5-ply	10.00	1.60
32x4 1/2, Os. ss., 6-ply	13.75	1.95
33x4, Os. ss., 5-ply	10.55	1.70
33x4 1/2, Os. ss., 6-ply	14.20	2.05
33x5, Os. ss., 7-ply	19.60	2.55
34x4, Os. ss., 5-ply	11.40	1.80
34x4 1/2, Os. ss., 6-ply	15.00	2.20
35x5, Os. ss., 7-ply	20.10	2.75
30x3 1/2 Reg. Os. 4-ply	5.15	1.00

### WARDWEAR

Guaranteed for 10,000 Miles

Size	Price
30x3, Os. cl.	\$ 4.35
30x3 1/2, Os. cl.	4.59
31x4, Os. ss.	7.60
32x4, Os. ss.	7.90
32x4 1/2, Os. ss.	10.05
33x4, Os. ss.	8.50

High Pressure Cores—Oversize

Size	Price
29x4.40	\$ 5.15
29x5.00	7.05
30x4.50	5.80
30x5.25	8.45
30x5.77	10.30
31x5.25	8.60
33x6.00	11.00

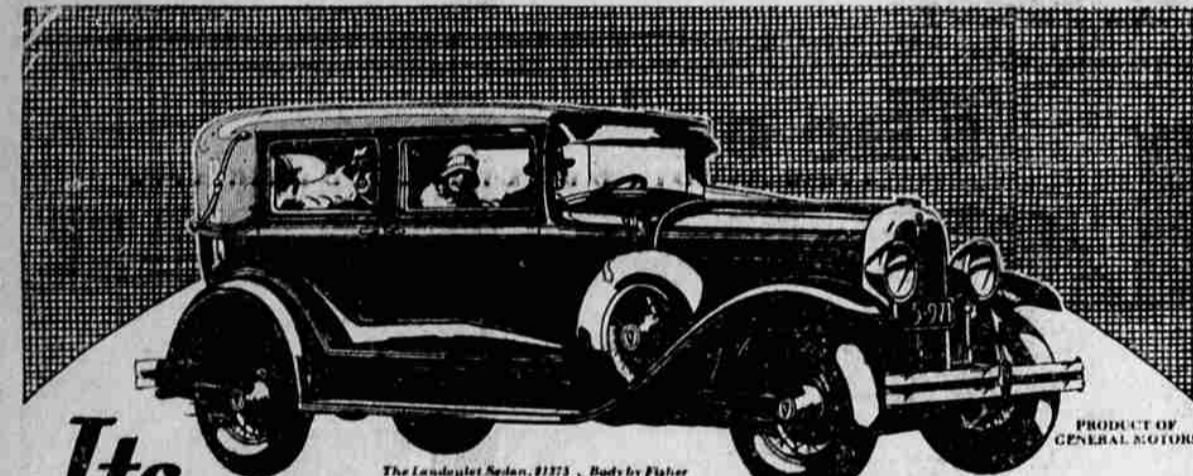
Balloon Cores—Full Size

## MONTGOMERY WARD & CO.

Phone Main 18

1101-3 Wash. Ave.

La Grande, Ore.



## Its Pulse-Stirring Performance matches Its New and Original Style

There's no argument anywhere. Everybody agrees. All unite in praising the beauty of the New Oakland All-American. In admiring the luxury of its magnificent new bodies by Fisher. In applauding its refreshingly new and original style.

And there are many who go further. The many who have driven this great new car. They enthuse over its pulse-

stirring performance. Over its glorious power, acceleration and speed.

There's a lot to be said for the appearance of the New All-American . . . for its colors and contours and distinguished style. And there's more to be said for its brilliant performance . . . performance unmatched in any other car offered at such moderate price!

Prices \$1145 to \$1325, f. o. b. factory, plus delivery charges. Excludes Hydraulic Shock Absorbers and spring covers included in list prices. Bumpers and rear fender guards extra. Check Oakland delivered price—they include lowest handling charges. General Motors Time Payment Plan available at minimum rate.

### LA GRANDE MOTOR CO.

Hall Motor Co., 1419 Adams Ave., Enterprise, Oregon

# A NEW ALL-AMERICAN SIX BY OAKLAND