

BIZARRE DESIGNS IN BEACH PARADE

Plenty Colors in Florida Styles; Modernistic Idea Is Used

PALM BEACH, Fla., (AP)—A golf enthusiast and member of the famous Old Guard of Palm Beach says the reason he wears dark glasses on the links is not to shade his eyes from the dazzling sun, shine, but from the too bright colors of the modernistic golfing gear worn by the feminine contingent.

Just why the term "modernistic" should be applied to those designs which are brightly colored, upside down and east in a riot of startling color combinations, is more than the golfer can understand.

Not only colorful coats, but pajama for those who hang their clothes on the proverbial hickory limb but never get in the water, period in popularity. These pajamas, in modernistic designs, are especially liked at the Bath and Tennis Club, where social life centers about the beach, and where fashionable bathing and tanning continue from 9 o'clock in the morning until 4 o'clock in the afternoon.

The time from 4 o'clock until sunset is comparatively short, when nature lends its approval to the modernistic mode as the sun, like a huge luminous orange, sinks to rest amid a host of fantastic colors in zig-zag shapes. A typical Palm Beach sunset is perhaps the oldest and newest example of modernistic art. Perhaps that's where the style originated, after all.

Kodak Comparatively New This first kodak, the invention of George Eastman, appeared in 1888, and the first pocket kodak was introduced in 1889.

PHILADELPHIA, Feb. 8 (AP)—A policeman pursuing a fugitive accidentally shot and killed an innocent bystander at Front and Dock streets today. The victim was Morris Levin, of Lakewood.

MIL WOODWORTH DIES TAMPA, Fla., Feb. 8 (AP)—Ellis Woodworth, 66, former California newspaper publisher and long active in democratic circles in New York and Florida, died last night after a short illness.

Re-Elected



C. J. Eldredge is the world's biggest butter and egg man. He was recently elected president of the Chicago Mercantile Exchange, which last year did a business of nearly \$400,000,000 in the sale of butter and eggs. It is his fourth term.

Policewoman Gets Shooting Award

SPOKANE, Wash. (AP)—Mrs. Grace Amick, local policewoman, who takes a "police positive" on her tours of duty, has been awarded a medal for being one of the first four ranking marksmen of the force.

She won the class C shoot and was decorated by Col. Joseph K. Partello, commander of the 4th Infantry at Fort George Wright, who said it was a new experience for him, despite a long military career of citations and decorations.

The duties of Mrs. Amick lead her into dance halls and frequently into the necessity of arresting unruly men as well as girls, but so far her well known ability with the revolver has enabled her to make arrests without difficulty.

INNOCENT MAN KILLED

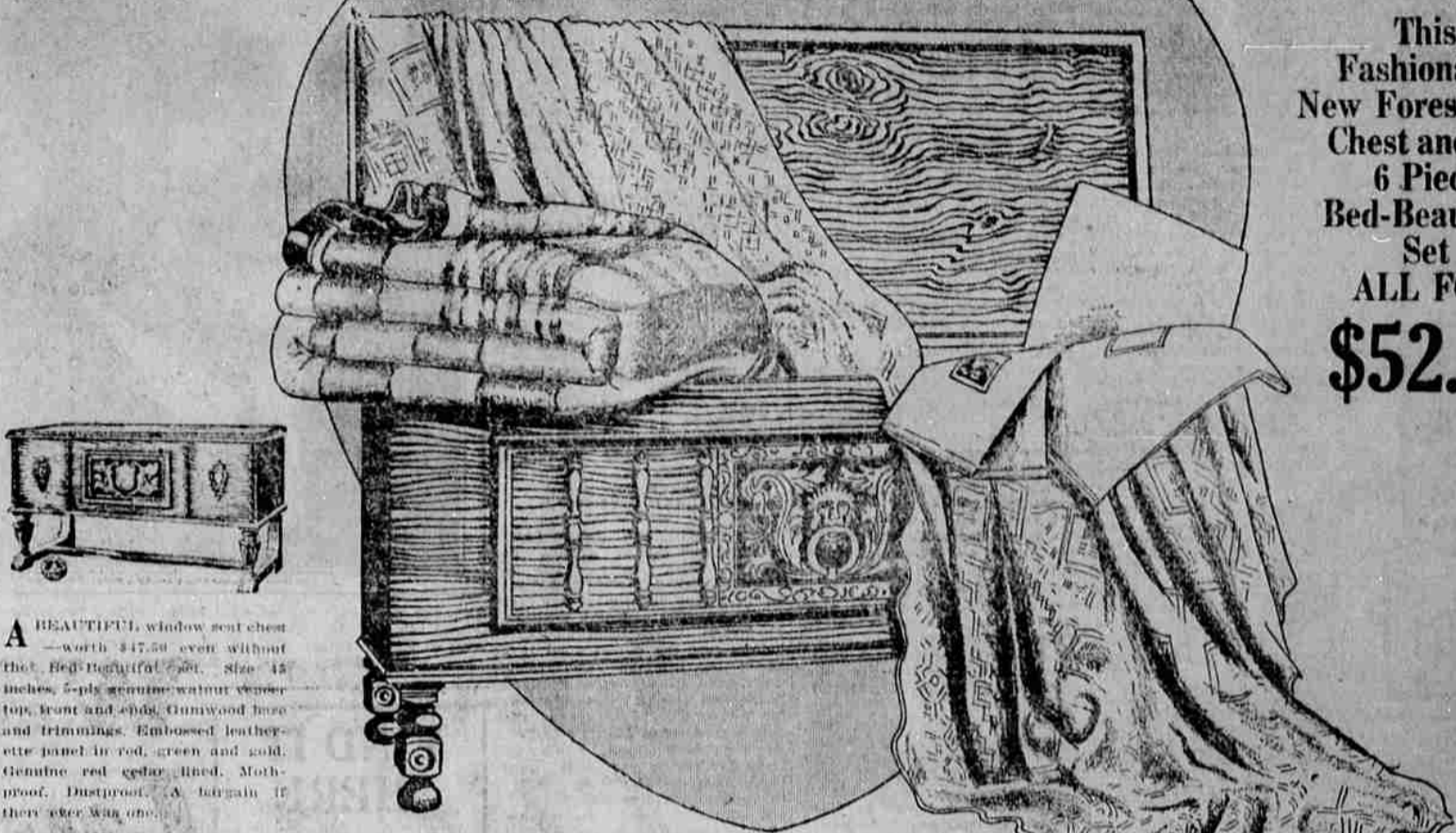
PHILADELPHIA, Feb. 8 (AP)—A policeman pursuing a fugitive accidentally shot and killed an innocent bystander at Front and Dock streets today. The victim was Morris Levin, of Lakewood.

MIL WOODWORTH DIES

TAMPA, Fla., Feb. 8 (AP)—Ellis Woodworth, 66, former California newspaper publisher and long active in democratic circles in New York and Florida, died last night after a short illness.

BEGINNING FEBRUARY 9TH SWEETHEART SALE

This Fashionable New Forest Park Chest and the 6 Piece Bed-Beautiful Set ALL FOR \$52.50



A BEAUTIFUL window seat chest worth \$47.50 even without the Bed-Beautiful set. Size 45 inches, 5-ply genuine walnut veneer top, front and ends. Gumwood base and trimmings. Embossed leatherette panel in red, green and gold. Genuine red cedar lined. Mothproof, dustproof. A bargain if they ever was one.

A VALENTINE GIFT THAT GOES STRAIGHT TO THE HEART

A Fashionable New FOREST PARK Window-Seat Chest and a Six Piece BED-BEAUTIFUL Set All For

\$47.50

WITHOUT question these three chests are the finest Valentine gifts we have ever seen. Worth at least \$15 to \$25 more! Get one for HER today! With this chest you give all of the craftsmanship and skillful designing that has made Forest Park chests famous. You give up-to-the-minute style. You give sound construction. You give patented dustproof protection to contents. You give real protection against moths. You give extra strong double lock corners. You give more than this—for these chests embody every latest development known to the cedar chest industry. Give HER this long lasting beauty—this sure protection for her precious things—this gift that goes straight to the heart. But get it for her now. The offer is limited.

The 6-Piece Bed Beautiful Set

BEAUTIFUL, precious things of highest quality and made in Mrs. shall Field's mills—a fitting start for her hope chest. This is what she gets: A Jasper colored, scalloped rayon bed spread, 81x105 inches. Two crisp, new Wearwell sheets with ruffled edge 81x29 inches. Two Wearwell pillow cases 42x36 inches. And a double blanket, screen bound, 3-inch binding, double stitched in two rows. Size 66x80 inches. Plenty of wool for warmth and enough cotton for long wearing quality.

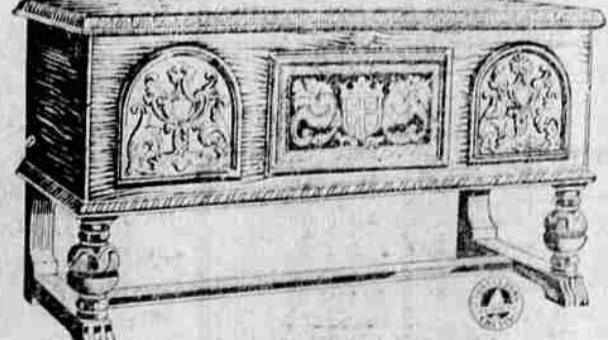
And These Chests Will Protect Them from Moths

Fully cedar lined—top, back, bottom, sides. These chests really protect fibers from the ravages of moth. Patented features seal in the sweet cedar aroma so that these chests are continually filled with moth-repelling cedar fumes.

Men! Order With Confidence By Phone or Mail!

MEN—don't let this day pass without at least seeing these remarkable chests. Be the first to give and as a gift Valentine Day. Order with confidence by phone or mail—if necessary. But by all means get yours. If you don't think them worth \$15 to \$25 more, we'll refund your money.

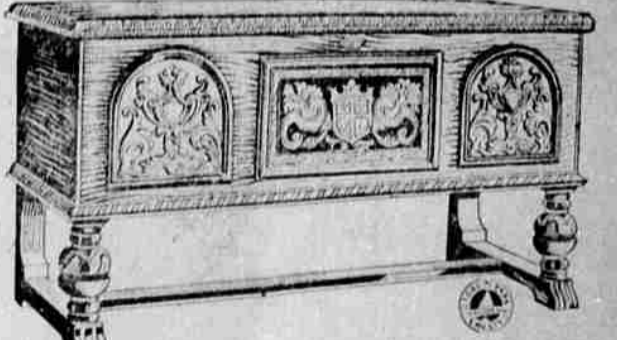
Limited Offer Until February 14th Only



This Style and the 6 Pc. Bed-Beautiful Set \$57.50

Even if we were to charge \$10 more, you'd think this chest a remarkable value. Has a 4-way hand finished genuine half walnut top, 5-ply genuine walnut front and ends. Attractive gumwood carved feet and trimmings, richly embossed Spanish leatherette panel in red, green and gold, wood fibre carved ornaments and full cedar lining. Size 48 1/2 x 30 1/2.

Forest Park Chests Tealite Lids



This Style and the 6 Pc. Bed-Beautiful Set \$52.50

A 48-inch chest of remarkable quality for so low a price. Has carefully selected 5-ply genuine walnut veneer top, front and ends; a beautiful embossed Spanish leatherette panel in red, green and gold; wood fibre carvings; strong American gumwood base and trimmings; a fully lined interior of choice red cedar; mothproof, dustproof.



This Card Goes With Her Chest

This red heart-shaped gift card with its delightful message goes with each of these Forest Park chests. It's the finishing touch to a real gift package.

Chests Have Patented Sealtite Lids

Each of these chests is equipped with the "Sealtite" lid—a feature in Forest Park chests only. Seals in the cedar aroma and keeps out the dust.

and Doublelock Strong Corners

Strong double lock corners are a feature of each of these chests. His nine separate gluing surfaces and is practically indestructible. Your gift will last a lifetime.



For a new idea of how delicious pancakes and waffles can be, you just must try the improved



A Sperry-quality product, very recently arrived at your grocer's



Lest We Forget - -

In reverence to the memory of our loved ones who have passed beyond, we should mark the sacred graves with a fitting memorial that will perpetuate for all time the respect, love and devotion that was theirs while on earth with us.

Our understanding of your problem enables us to offer you the right kind of aid in designing and making a fitting memorial.

Cemetery Memorial Works On S Ave., between Fir & Spruce

W. H. Bohnenkamp Co.