

### WILLYS-OVERLAND EXPORTS HEAVY

#### Company Breaks All Its Previous Records in Overseas Shipments

TOLEDO, Jan. 19.—The Willys-Overland Company broke all its previous export sales records during 1928.

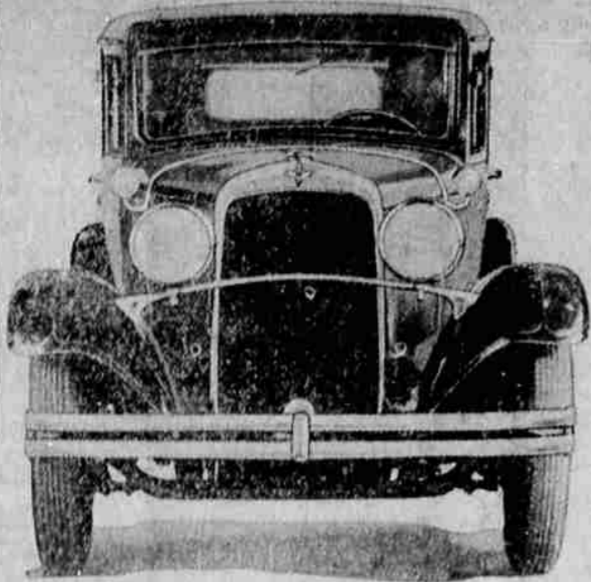
Shipments to foreign countries during the year totaled 38,628 cars as compared with 27,592 during 1927 or an increase of 9,106 units or 31 percent. Many of the European and Asiatic countries showed a much larger increase in percentage but the average was well over 25 percent.

The company has been steadily increasing its foreign business for years. President Willys said that preparations are being made for increasing export business during the new year by 40 percent over the record breaking shipments of 1928. The company has greatly increased its dealer organization abroad in addition to development of manufacturing plants in Canada, Great Britain and Germany.

**Where They Go.** Countries which showed the largest increases during the year include: Argentina, Brazil, Chile, Japan, India, Spain, Australia, Java, Sweden, South Africa, New Zealand and England. The big season of automobile buying is just beginning in Argentina, Australia and New Zealand and the company's dealers in these countries are ordering larger quantities than ever before and have gained their confidence that from 25 to 40 percent more cars will be sold in these countries during the next six months than in the corresponding period of 1928, Mr. Willys said.

First complete figures of foreign sales by Willys-Overland during 1928 showed that the company increased its sales in Great Britain alone by 85 percent over the preceding year. This compares with an export increase by the rest of

### Front View Of Dodge Brothers New Six



**GRACEFUL** stylish lines are emphasized in this view of the Dodge Brothers New Six. All exterior hardware is chromium plated. The lamp tie-rod is curved between the heavy one-piece steel fenders, to add an artistic touch. The radiator is of cellular design, its height being an important factor not only in providing a larger cooling area but in improving appearance.

the industry of approximately 25 percent. During the year American manufacturers sold about 800,000 cars abroad as compared with 643,000 units in 1927. Willys-Overland dealers in foreign countries report a big increase in demand for closed cars. In New Zealand this year the closed car is dominating the market although in Australia the open car is still in favor, these dealers report.

### Studebakers In N. Y. Show Given Much Attention

The largest January production in the history of The Studebaker Corporation has been scheduled as a result of the enthusiastic reception accorded the new Studebaker models at the National Automobile Show in New York last week, according to an announcement by A. H. Erskine, President of The Studebaker Corporation.

Changes made in the South Bend plants have provided many thousands of square feet of additional space available for the increased manufacturing schedule.

The past year was one of the most successful in Studebaker history, with sales of 115,000 cars. This compares with 111,000 cars in 1925 and 116,000 cars in 1927. Export business in 1928 was the greatest in Studebaker history. By September of 1928 export sales had passed the total sales volume of 1927, which was the best previous year in overseas markets.

The outstanding success scored by the new Studebaker Commander Six and Eight and The President Eight models at the New York Automobile Show has led to the prediction that Studebaker will clinch three years of steadily increasing sales with a record breaking volume of business in 1929.

### Price Reductions In Tires Announced

Taking effect at once, the Western Auto Supply company has announced substantial reductions in prices on all Western Giant and Wear Well tires sold by their more than 150 western stores.

Dealers stated that the reduced price schedule affords automobile owners an opportunity to equip their cars for the new year with tires that will give them a new realization of tire satisfaction and economy.

### The Roaring Road

By the Associated Press  
America is certain to be represented by a defender of the mile record now set at 207,652 miles an hour as M. White, Philadelphia sportsman, is tuning up the three mighty engines of the Triplex with which he brought the record back to America last April. Major Seagrave may not carry back the world speed honors to England, as he expects, without a struggle.

A mid-western designer, who has been cloaking his activities in mystery, is said to have laid out a car for the beach with the engine finished and ready to be dropped into a frame. Many years of experience are known to be behind this effort and should the creation be ready to start in March at Daytona it can be depended upon for a good showing.

**Racing on Rising Tide.** Promoters of the Atlantic City speedway are planning to put that track back on the basis of major championship racing this year with the possibility of the first event in May.

Altoona also is laying plans for a return to two championship events a year, the 1929 program to include one in June and another during the American Legion convention week in September.

With the possible chance of a speedway race in Detroit and another over a projected track at Chicago, it looks like a busy season for the boys if the plans all materialize.

**Indianapolis "All Set"**  
The first sanction granted by the A. A. A. contest board in the new year was for the annual 500 mile classic at Indianapolis on Memorial Day. This race is the Grand Prize of American racing. The total purses posted for the drivers again reaches \$60,000. In addition to this many of the larger accessory firms put up sums ranging from \$1 to \$5,000.

**Mix Golf And Racing**  
An eighteen hole golf course is under construction on the Indianapolis speedway grounds and will be ready for play sometime after

the Indianapolis race May 30, nine holes are on the inside of the track. It does not in any way interfere with the free parking space enjoyed by the race fans. The course will be closed only once or twice a year, when races will be the order of the day.

**Milton to be Judge**  
Tommy Milton plans to motor from the west coast to Florida in

February to attend the beach speed trials, at which he will be a member of the board of judges. Milton and Bob McDonough motored to the west coast for the holidays.

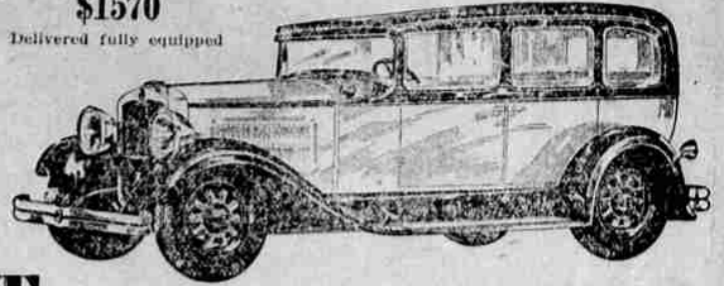
British actress says that in order to succeed on the stage a girl must have the kind of face men don't forget. Still, it wasn't her face that Mistinguette had insured for \$100,000.

**HULL, Eng., Jan. 19 (AP)**—A million dollars in damage was caused by a fire which threatened the whole center of the city this morning. Several office buildings and numerous small shops were considerably damaged.

So live that you can criticize the police system without making people wonder what you were pulled for.

### THE RECORD-BREAKING NEW NASH "400"

Special Six "400" Sedan  
**\$1570**  
Delivered fully equipped



### TAKE THE WHEEL and learn why NASH can say: "World's Easiest Driver Control"

**EFFORTLESS** steering... softness of clutch action... quick brake response—these are features of the Nash "400" that give new delight to motoring.

Thousands of "400" owners will tell you that to them driving is never tiring. For the Nash "400" has "World's Easiest Driver Control."

This is a strong claim, but we make it earnestly, and with the firm belief that it is an unvarnished, accurate statement of fact.

9 Sedans from \$1066 to \$2249, 8 Coupes, Cabriolets, Victorias from \$1066 to \$2023 Delivered

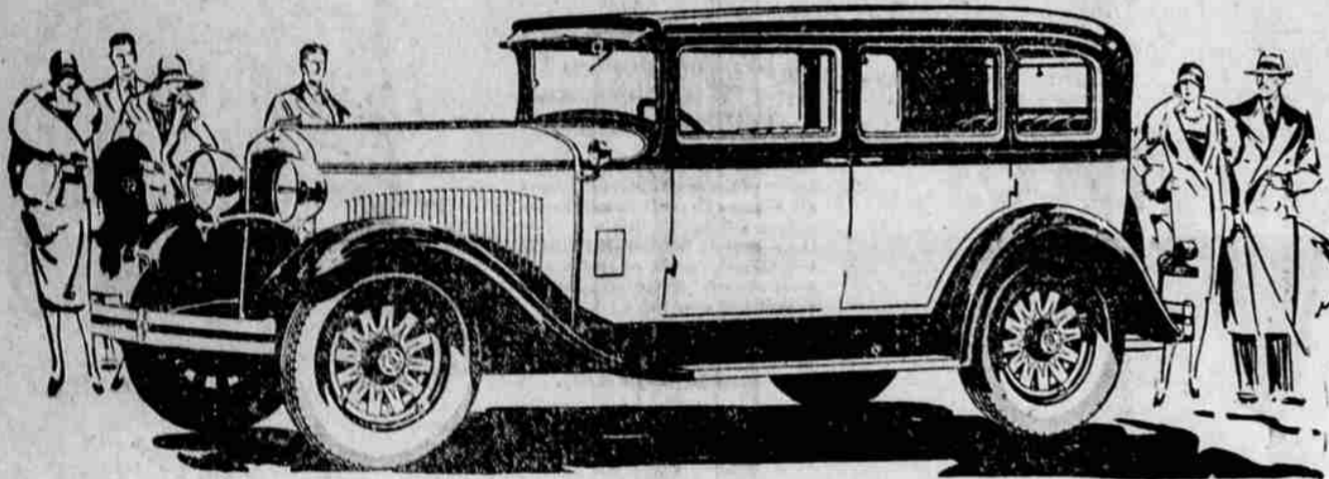
### The New NASH "400"

IMPORTANT "400" FEATURES—NO OTHER CAR HAS THEM ALL

- |   |   |  |  |
|---|---|--|--|
| Twin-ignition motor   | Aluminum alloy pistons (Lover Strain)                             | Bijur centralized chassis lubrication        | Longer wheelbases                          |
| 12 Aircraft-type spark plugs                                    | New double drop frame   | Electric clocks                              | One-piece Salon fenders                    |
| High compression  | Torsional vibration damper  | Exterior metalware chrome plated over nickel | Clear vision front pillar posts            |
| Houdaille and Lovejoy shock absorbers (exclusive Nash mounting) | World's easiest steering 7-bearing crankshaft (bellow crank pins) | Short turning radius                         | Nash Special Design front and rear bumpers |

McKennon Nash Motor Co.  
806 Adams Avenue, Main 650.

## WALTER P. CHRYSLER Presents the New



# DODGE BROTHERS SIX

EVER SINCE the first Dodge Brothers car made its appearance some 15 years ago, the name of Dodge Brothers has enjoyed commanding prestige.

Hence, in acquiring the Dodge Brothers Corporation, and in undertaking to plan, produce and protect the future products which will bear the Dodge name, we are mindful of our profound personal obligation to the vast Dodge Brothers public and the host of Dodge Brothers dealers throughout the world.

It is our sole aim to add so consistently and conspicuously to the present acclaim of Dodge that every Dodge owner and every Dodge dealer will feel even greater pride and will have cause for even greater satisfaction.

We are utilizing every one of the elements of progressive engineering, scientific manufacturing and outstanding value which have contributed to the success of all other Chrysler-built cars and to the general progress of the Chrysler Corporation.

We have embodied such evident value, such surpassing performance, such engineering supremacy and so much of originality, beauty and lux-

ury that by every comparison, the intrinsic value of Dodge Brothers cars will remain unchallenged.

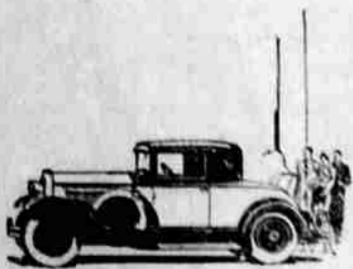
The new Dodge Brothers Six furnishes unassailable evidence of the unlimited capabilities of the great, organized forces of the Chrysler Corporation when marshalled to full strength in any enterprise.

From an engineering standpoint, this new Dodge Brothers Six is a supreme achievement by a group of engineers whose scientific accomplishments have revolutionized automobile design.

We believe that in performance, in new measures of comfort, in long-lived excellence, and in persistent and inherent value it surpasses every previous conception of what a car at this price could possibly be.

We are proud to be the creators and sponsors of the new Dodge Brothers Six—and present it in the sincere conviction that it offers the high value, dependability and distinction which a discriminating public expects always of Dodge Brothers.

COME IN AND SEE THE NEW DODGE BROTHERS SIX



Also See THE NEW DODGE SENIOR  
Chrysler inspired, the new Dodge Senior combines the finest custom style with big car roominess and road-ease. It is the largest, handsomest, and finest of all Dodge Brothers cars.

# SMITH'S GARAGE

5th and Depot

# Studebaker

HAS

A NEW AND GREATER

## President Eight

And

## Commander Eight

At prices that make them the most sensational values of the automobile year!

Watch For Them!

# M. J. Goss

Adams and Fir