

STEVENS-VAN ENGELLEN CO.

1405-7 Adams Avenue

La Grande, Oregon

Grace Building

Men's 220 wt. white back blue denim Overalls or Jacket S. V. E. Co. Price only 89c



Our Bayly-Underhill Overalls or Jacket \$1.29

Why attend sales, when new merchandise can be purchased at our low prices every day. We do not hold sales; our low prices keep our merchandise moving out, and new merchandise continually coming in.

The policy of the S. V. E. Co. is to sell standard merchandise at a fair margin of profit, and giving the buying public every advantage of change in prices of merchandise. We pay postage on mail orders within a radius of 250 miles of La Grande. All merchandise sold with a money-back guarantee.

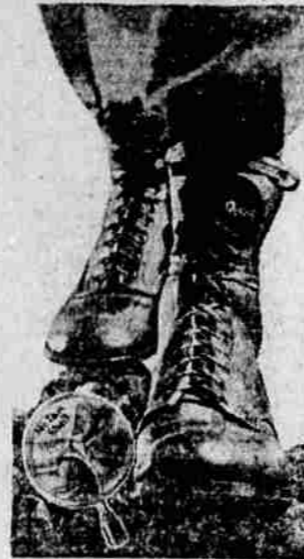
Visit Our Store --- Compare Our Prices.

S. V. E. CO.

Churchill Made To Measure Clothes For Men

Five Improvements In Horsehide Workshoes Perfected By Wolverine!

Made of Shell Cordovan Horsehide—the longest-wearing leather. Dries soft after soaking. Remains scuffproof. Fifty percent greater resistance to acids. Try on a pair today.



Here is the best value in a work shoe we know—the Shell Cordovan Horsehide work shoe made only by Wolverine, America's leading tanners of horsehide. The leather is taken from only one-sixth of the hide, just the part over the horse's hips. Men tell us a single pair often wears as long as two or three years! That's because of the shell beneath the hide. It smooths off and shows no sign of wear for months.

For farm or shop work—for hunting, too—you'll find Wolverines ideal. They dry soft after walking through water and slush. They're double-stitched to defeat acid burns and scuffs. And they're mighty hard to rip or tear. All styles, ankle-lengths to

WOLVERINE WORK SHOES WORK GLOVES

knee-highs, flexible or greases-filled soles. One trial will win you. Come in today.

Eight-Inch Top \$4.95 and \$6.45

Sixteen-Inch Top \$9.90

Misses' Fall Coats Sizes 4 to 12 years \$3.98 to \$9.90

Misses' Gingham School Dresses Sizes 2 to 14 years 98c to \$1.98

Ladies' Millinery Felt and Velvet Hats 95c and \$1.95

Ladies' Trench Coats \$5.90 and \$6.90

Velvet Dresses New Transparent Quality Values worth up to \$39.50 Only \$14.75

Turkish Towels, Plain White, large size—19c

Children's Ribbed Stockings—Beige and Black. Size 5 to 9½—2 pairs 25c

Ladies' Pure thread full fashioned Silk Hose

In season's colors --- Grain, Honey Beige, Champaign, Evenglow, Season, Gunmetal and Black.

S. V. E. Co. Price only 98c pr.



Men's Full-out Blue or Grey Work Shirts. Coat style—69c

Men's Blue or Grey Work Shirts. Coat style—79c

Men's Extra Heavy, Full Cut Work Shirts, in Blue or Grey—95c

Corduroy Pants for Men—\$2.95 & \$3.95

Men and Young Men's Dress Trousers—English and Regular Cut—\$2.45 - \$2.95 \$3.95 - \$4.95

Boys' Longee & Knicker Pants—\$1.95 - \$2.49 & \$2.98

Boys' Longee Suits, one long and one short pants—\$7.90 - \$9.90 \$11.90 & \$14.75

Boys' Fancy Dress Socks pair—25c

Boys' Fancy Broadcloth and Percale Shirts—69c - 79c - 89c

Boys' Dress Caps—with or without inlana—49c - 69c - 79c & 98c

New Percales—Light, Fancy Colors, 34-in. wide. Only 15c yd.

Fancy Prints—Light and dark patterns, 34-in. wide—19c

Lancaster, 32-in. Gingham—Fancy and plain colors—17c yd.

American Home Creations Medium Weight Cloth for curtains or comforts, 36-in.—19c yd.

Plisse Crepe, White and Plain colors, 30-in. wide—19c yd.

New pattern in Comfort Challies, 26-in. wide—15c yd.

New shipment dark and light Chevies, 28-in. wide. 12½ & 15c yd.

Khaki Twill Cloth, 30-in. wide, good weight—29c

A C A Feather Ticking, 32-in. wide—33c

Straw Ticking—Medium weight—19c yd.

White, Black, Blue Denim, 28-in. wide—23c yd.

36-in. Bleached Muslin, Standard quality—10c yd.

30-in. Unbleached Muslin—Standard quality—10c yd.

Pillow Ticking, 42-in. wide—21c yd.

Crash Toweling, 16-in. wide, White and Ecru—10c yd.

SHEETS—81x90 in. full bleached Sheets—79c

42x36 in. Pillow Cases, only—19c

Silks, Crepe de Chine, 39-in. wide—Many New colors—98c yd.

Baronet Satins—40-in. wide, new colors—98c yd.

Children's Gowns and Sleepers, sizes 4 to 12 yrs.—49c

Ladies' Straps and Pumps New 1929 Styles. In Patent, Suede and Kid Leathers, \$2.95 - \$3.95 - \$4.95

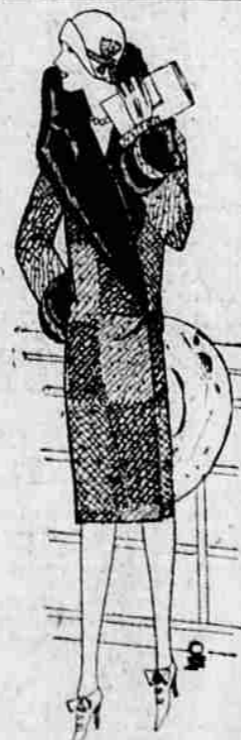
Ladies' Arch Support Straps, Pumps and Oxfords We Are Showing a Very Complete Line of Arch Support Footwear. See them—\$3.95 and \$4.95

Misses' and Growing Girls' Straps and Oxfords Black—Patent and Tan. 12 to 2 \$2.49 - \$2.98 & \$3.45 2½ to 6 \$2.95 - \$3.95 & \$4.95

Infants' and Children's Oxfords and Straps Infants Soft Soles 59c - 69c - 79c 1 to 5 \$1.25 - \$1.39 & \$1.49 5½ to 8 \$1.49 - \$1.69 & \$1.98 8½ to 11½ \$1.98 - \$2.25 & \$2.49

Men's Shoes Dress Shoes & Oxfords \$2.95 - \$3.45 - \$3.95 Work Shoes \$2.95 - \$3.45 - \$3.95 - \$4.95 We Also Carry Nunn-Bush Dress Shoes and Oxfords.

Boys' 220 Weight Blue Denim Overalls Sizes 4 to 16 yrs.—69c



New Spring Dresses \$4.98 \$9.90 \$14.75

Ladies' Fall COATS Fur Trimmed \$12.50 to \$33.50

