

### CHANGE GRAHAM TRUCK TO DODGE

#### Commercial Cars, Buses and Motor Coaches Renamed by the Makers

Trucks, buses and motor coaches built by Dodge Brothers under the name of Graham Brothers are to be known in future as Dodge Brothers trucks, buses and motor coaches, according to an announcement just made by officials of the company, says L. C. Smith, local dealer.

The entire line now will take the name of Dodge Brothers and the change will go into effect immediately. All units always have been powered by Dodge Brothers engines and built for years with Dodge Brothers parts in Dodge Brothers factories according to Dodge Brothers standards. They will be known hereafter as Dodge Brothers products.

Forty-two models of truck chassis, with wheelbases of 110 to 155 inches, are included in the line. When combined with the various body styles and equipment, gear ratios, tires, wheels, etc., they extend to many hundreds of truck types designed to meet more than 90 per cent of all hauling requirements. They range from the lightweight Express light delivery to the heavy-duty 5-ton truck. In addition many types of unusual highly specialized bodies are built by the special equipment division of the company.

Dodge Brothers have been building motor coaches and buses for the past five years. Thousands are in use today, in city and interurban transportation lines from coast to coast. In Detroit alone, coaches built in the Dodge plants have been operated virtually 25,000,000 miles over the city's streets. The line includes two motor coach types and several school buses, varying in capacity from 18 to 52 children.

A recent survey shows it is possible for us to assemble approximately 2,000 different types of trucks alone," said Charles W. Matheson, general sales manager for Dodge Brothers. "These are combinations of equipment on various chassis. This shows why we are able to meet the transportation and hauling demands of virtually every kind of business. Production today must take in every angle of the complicated requirements for dependable, speedy and economical transportation. The high public regard in which they are held explains why local business men have been impelled to purchase Dodge Trucks at a rate of more than a million dollars worth a week."

Among the many outstanding developments of Dodge Brothers engineers in the commercial lines, which include trucks and coaches, are six-cylinder engines, four-wheel brakes, four-speed transmission, street car type and parlor coaches, school buses, Merchants Express, one, two and three ton trucks.

All coach and truck models are powered with six-cylinder engines, and have four-wheel brakes. Four speed transmissions are used on all models from the one-and-a-quarter ton upward.

### Tennessee Now Studying Road Curing Tests

MEMPHIS, Tenn., (AP)—The most comprehensive series of concrete pavement curing tests yet undertaken are under way on the road between Memphis and Somerville, Tenn., to provide an outdoor laboratory for road curing problems.

The bureau of public roads is co-operating with the Tennessee department of highways and public works in the investigation, which has been planned to include practically every curing method which has received serious consideration.

The general scheme of the test is to cure one side of the pavement continuously with the state standard method, consisting of application of wet burlap for 24 hours followed by a two inch earth covering kept wet for ten days. For comparison with this standard curing the other side of the road has been divided into a series of sections, each consisting of a day's run or approximately 1,000 feet and each cured in a different manner.

Curing of concrete has been considered a highly important factor in road construction, and it is a point upon which highway engineers have widely varied opinions. The Tennessee road curing tests are expected to have an important bearing on highway building throughout the country.

Wet burlap is used widely, but there is a difference of opinion as to the length of time it should be applied. Some construction engineers apply wet burlap 24 hours, others 48, 72, or 96 hours without further curing. Others use shaft-craft, sodium silicate, asphaltic emulsion, calcium chloride, coal tar, wet earth or tar paper. Each of these methods will be tested under similar conditions, and the road observed later as to the effectiveness of the various treatments.

Detailed observations as to temperature, humidity, wind velocity, rainfall, condition of concrete and subgrade are being made throughout the progress of the work.

### Travel Boom On Canadian Border

PEDERHICTON, N. B., (AP)—New Brunswick wound up its heaviest year on record for American automobile tourist travel with an increase of 56.9 per cent in fall travel alone.

The federal national revenue department issued 9,131 permits for periods of more than 24 hours up to 60 days for tourists' automobiles from the United States during the last three months as compared with 5,852 permits in the corresponding months of 1927. This is an increase of 56.9 per cent.

Permits for tourists' automobiles from the United States entering the province of New Brunswick at international boundary points during the first 11 months of 1928 totaled 30,549. This figure compared with the corresponding period of 1927, when 22,921 permits were issued, shows an increase of approximately 33 per cent.

New Brunswick's good roads attracted 19,364 touring parties from the United States across the Inter-

### GARAGE GOSSIP

#### Two Buy Studebakers—

Sam Litch, of Enterprise, purchased a Studebaker sedan from the M. J. Goss garage in this city. E. A. Strauss of La Grande bought a Studebaker eight from the local dealers this week.

#### Garage Interior Decorated—

The main room of the M. J. Goss garage has been redecorated and presents an attractive appearance.

#### New Carload Arrives—

A new carload of automobiles has been unloaded at the local Hudson-Essex garage. The shipment includes one coupe, one coach and a town sedan, all Essex makes, and a Hudson standard sedan.

#### Garage Men From Baker—

Garage men from Baker who visited in La Grande this week were: Bill Southard and W. P. Cryderman, of the Halek garage, and Harry Anderson, of the Universal Motors company.

#### Buy Chrysler—

Lowell Williamson has purchased a Chrysler sedan from the local Chrysler garage, L. W. Weeks proprietor.

#### Very Busy in City—

Van A. Berry, of the Gettings and Hanks garage at Enterprise, was in this city yesterday at the La Grande headquarters of the company.

#### Unload New Cars—

A carload of new Whippets was unloaded this week at the Gettings and Hanks garage. Two sedans and two coaches were included in the shipment.

#### Mr. Evers Buys Car—

Ray Evers, of Cove, is the owner of a new Chevrolet purchased from the Blue Mountain garage this week.

#### Mr. Ward Buys Car—

L. S. Ward, of the Eastern Oregon Mule company, bought a new Chevrolet coach this week from the Blue Mountain garage. The car was delivered Thursday.

#### Mr. White Visits—

A. B. White, of Pendleton, district manager of the General Petroleum corporation, was a visitor at the Jennings and Shumate garage yesterday.

#### Mule Goes to Bed—

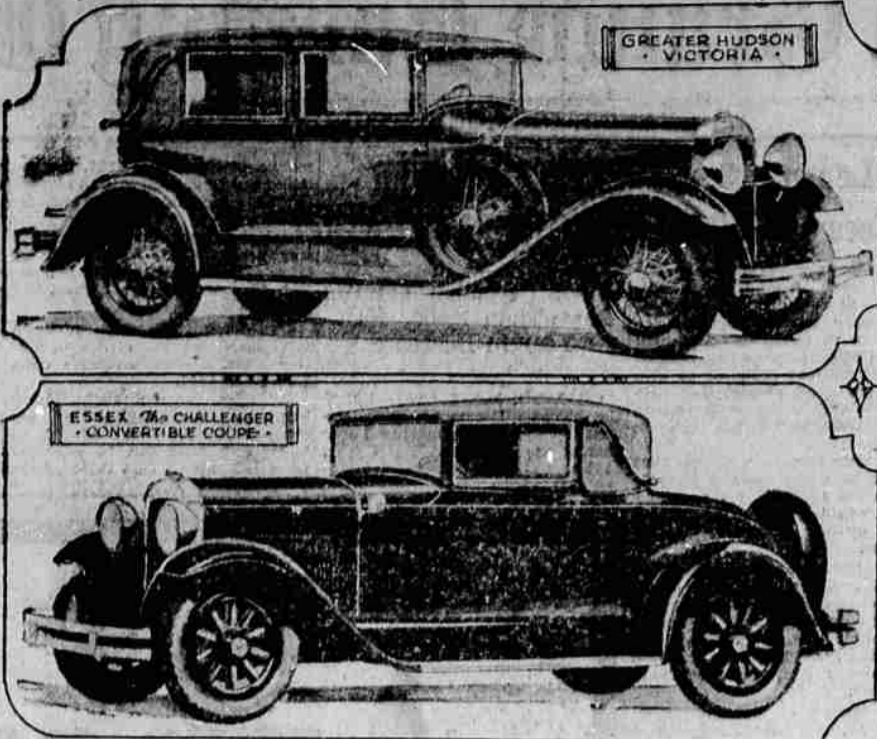
LUMBURTON, N. C. (AP)—A mule at Evergreen, near here, seized with an attack of "wind stingers" tore down two wire fences, entered a home and lay down in a bed to die with his "shoes on."

#### Haze Fair Building—

SAN FRANCISCO (AP)—The Egyptian building, last remaining structure of the "Mifawint" national exposition here in 1894, is being razed to make room for an addition to the M. H. de Young Memorial museum in Golden Gate park.

national bridge, which spans the St. Croix river between Calais, Me., and St. Stephen and is the principal gateway to the province.

### Two Members of The Hudson-Essex 1929 Lines



The Victoria, long established as a popular model among the Greater Hudson Super-Sixes, this year appears with a completely redesigned body, incorporating all the line's characteristic grace, modishness and color. The Convertible Coupe, an Essex Challenger, is entirely new. Both engines give greater speed and power with less fuel consumption.

### TIRE SALES IN ITALY GAINING REPORT SHOWS

WASHINGTON (AP)—American automobile tire sales in Italy hit a new high mark in 1928, Sydney B. Hedecker, consul at Naples, reported to the department of commerce.

Italy imported more American-made tires during the first six months of 1928 than during the entire previous year, which established itself as a record year up until that time. The first six months of the year saw 322,700 tires imported as compared with 22,700 in the same period of 1927, and 69,200 in 1926.

Despite the marked gains recorded in the imports of American-made tires into Italy during the year, France continued to hold first place in the tire import trade. The United States gained second place, however, displacing Great Britain which in former years easily ranked second.

While the American exporters trade increased steadily during the early months of the year, French and German exporters showed a loss of their former trade in tires.

BERLIN (AP)—The former imperial stables and riding academy have been converted into indoor tennis grounds. The building, directly behind the palace, has remained empty while other imperial buildings housed government bureaux.

The premier of Rumania has just discovered that an entire railroad has been stolen. Dismantled and sold. Maybe he ought to ask around if anybody has seen a little black satchel.

### Americas Have 54 Per Cent Of World Highways

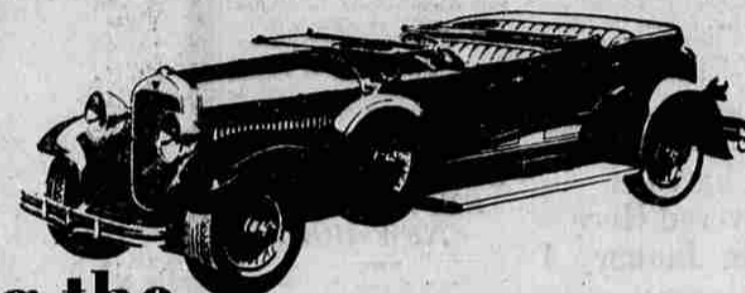
The United States and its neighbors in North and South America have over 54% of the world's roads and 46% of the total can be found between the Canadian and Mexican borders, according to Geo. O. Brandenburg, manager of the Oregon State Motor association, which is affiliated with the American Automobile association.

Mr. Brandenburg said that France, Russia, Canada, Australia, India, the United Kingdom, Germany, Poland and Italy follow the United States in the order named, and are the only countries with more than 10,000 miles of roads. Their combined mileage is 2,402,156 or 26% of the world's total, he continued, "while with the United States included, these countries have 82% of the whole."

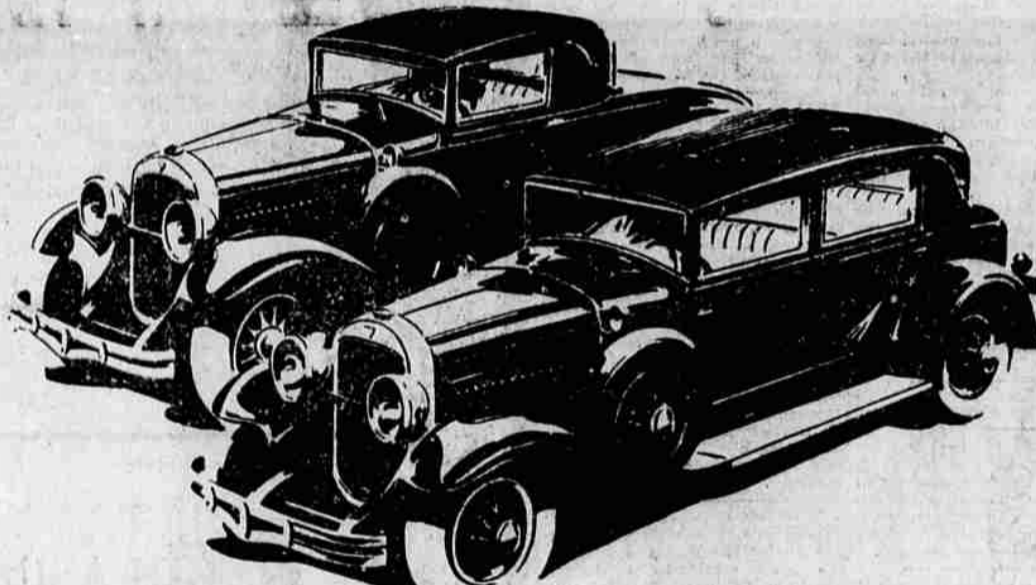
The A. A. A. club executive pointed out that some striking comparisons of road mileage are shown in the 5 world areas. Either America or the Pacific area, or Asia, has roughly twice the road mileage of Africa; Europe has almost 2 first-named areas, and the Western hemisphere has almost twice the mileage of Europe.

Oregon has more miles of improved highway per car and per person than any other state or governmental unit.

PARKERSBURG, W. Va. (AP)—The West Virginia Wild Life league has recommended legislation making it unlawful to pluck the official state flower, the rhododendron.



## announcing the GREATER HUDSON for 1,000,000 Super-Six owners to judge



### 64 improvements include . . . Large, Fine, Roomy, and Luxurious Bodies . . . 92 Developed Horsepower . . . Above 80 miles an Hour . . . 70 Miles an Hour All Day . . . Greater Economy . . . New design double-action 4-wheel brakes unaffected by weather . . . 4 Hydraulic two-way shock absorbers . . . Non-shattering Windshield . . . Easier riding, steering and control . . . A superb car with every appeal to pride . . . There are fourteen body types and two chassis lengths to choose from.

<b>\$1095</b>	122 inch wheelbase
and up at factory	2-Door Sedan - - \$1095
Standard Equipment includes: 4 hydraulic two-way shock absorbers—electric gas and oil gauge—radiator shutters—saddle lamps—windshield wiper—rear view mirror—electrolock—controls on steering wheel— all bright parts chromium-plated	Standard Sedan - - 1175
	Coupe - - - 1195
	Roadster - - - 1250
	5-Pass. Phaeton - - 1350
	Town Sedan - - - 1375
	Convertible Coupe - - 1450
	Landau Sedan - - - 1500
	Victoria - - - 1500
	139 inch wheelbase
	5-Pass. Club Sedan - - 1850
	7-Pass. Sedan - - - 2000
	7-Pass. Limousine - - 2100

Because the experience and suggestions gained from a million Super-Six owners led to the 64 improvements now introduced, the new Hudson is to be known as the Greater Hudson.

It is to this vast army of experts that this invitation to examine and drive the car and place upon it their appraisal is made. So emphatically does the Greater Hudson answer their wishes that we leave to them the verdict of its beauty, appearance, performance and value.

No car has ever held greater prestige from the standpoint of value. No car has been regarded as being better on the road or having such a satisfactory motor. In the Greater Hudson you will find that in these as well as other particulars a higher standard is set. No group of owners is better qualified to judge values. None know so well what smoothness and reliability—easy driving and easy riding means. So what they say of the Greater Hudson will be authoritative and conclusive. It is their judgment that we now invite.

## Coming-- A NEW Commander Six And Commander Eight

With the most beautiful body styles, most luxurious equipment and materials, most astounding performance in all Studebaker history.

WATCH FOR THE NEW STUDEBAKERS! Automobile value made possible only by the Great Independent

M. J. GOSS Adams and Fir

## Ledbetter Garage

Adams Ave.