

CHRYSLER AGENCY IN NEW QUARTERS

L. W. Weeks Moves Into Building Constructed for Him by Julius Roesch

A brilliant neon sign which shines in red the name "Chrysler" and above that word in blue lights the wings emblematic of the Chrysler car...

The new building just completed faces on Greenwood and Jefferson and was constructed by Julius Roesch. The attractive building was begun August 1. It is a one story brick structure, 119 by 129 feet in dimensions.

Six New Cars Displayed. Six beautiful new cars have been placed in the room. The show room walls are covered with a buff colored plaster.

The six new cars were unloaded this week. They include: a six wire wheel 65 sedan; five wire wheel 65 sedan; 65 coupe; 75 six wire wheel sedan; 75 roadster and a Plymouth sedan.

Flood lights attached to the wall spread a glow of blue, red and yellow, on the new automobiles. The show room has a capacity of seven cars.

The men who work with Mr. Weeks, owner and proprietor of the garage are: Ray Winters, bookkeeper; C. E. Wright, new car salesman; P. Price, used car salesman; D. S. Brown, mechanic; O. E. Howell, shopman and Jim Russell, floor man.

A show case and a new counter are attractive new fixtures located in the main room.

Latest Design. The latest and best design for garage purposes has been used in the building of the structure. The enclosed work shop of the main shop is one of the prides of the garage man. The cars which are being repaired, are worked on in this room which eliminates the necessity of repair work being done in the open shop where all the automobiles are housed.

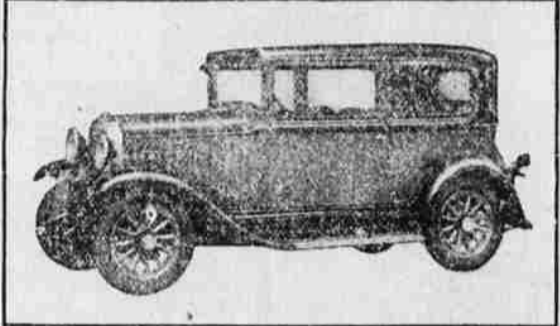
A wash rack and a movable oil container with three compartments making possible the wheeling of the oil out to the gas pumps, are features of the shop.

The main shop has a car capacity of 45 machines. In dimensions this room is 22 by 44 feet.

Five Rooms. Five rooms in all are included in the garage. The two offices are 19 by 12 and 19 by 14 feet in size. The parts room is 8 by 22 feet. A small basement houses the heating plant which is one of the latest types in the city. It is a hot air plant equipped with an electric fan.

ENOUGH First Business Man: Does your wife have enough mechanical ability to drive a car? Second B. M.: No, she merely furnishes the executive ability.—The Wheel.

NEW WHIPPET MODELS



The superior Whippet six, the lowest priced six with a seven-bearing crankshaft, according to company officials, is characterized by lines of beauty that set a new conception of artistry in the light six field. Above is a picture of the new Whippet six sedan. Beneath is a view of the superior Whippet coach, a four, which brings high-priced car beauty into the low-priced field, setting a new trend of style and quality in this classification.

Age of Wonders Yet to Come, Says Noted Genius of Motor Industry

DETROIT (AP)—One of the most widely known automotive engineers, the automobile industry has developed a firm believer in the theory that science has not yet begun to produce its real benefits to mankind.

He is Charles F. Kettering, vice president of the General Motors corporation and president of its research organization.



CHARLES F. KETTERING

"The wonderful age is yet to come; we are merely crawling along, groping for the truly wonderful things that the future will see." Such is the belief of the man who gave the automobile industry its electric self-starter, an electric lighting system and scores of other improvements.

Kettering, an inventive genius who purposely tried to "keep himself 100 per cent dissatisfied with all automobiles all of the time," tells associates:

"Do not introduce the dangerous mental state of completeness into your organizations. Let our men keep open to change—steady, gradual development."

Kettering was a farmer boy, whose consuming desire to "know why" made him so valuable to his organization that his life has been insured for millions in favor of the General Motors corporation. It will mean that his work will go on after his death. He is in charge of all research work of the corporation. Thoroughness is second nature with him. His greatest interest is in inventions that will save labor.

In his "look into the wonder age of the future," Mr. Kettering sees radium playing an outstanding part. "The little string of future developments is the progress already made in experimenting with radium. You have noticed a steam boiler when the pressure gauge was 200 pounds and you thought it was high pressure. But possibly few think of this other example of pressure. I open this knife blade, which has a tensile strength of maybe 100,000 pounds to the square inch, holding it together. "In radium, the pressure acts the reverse for some reason, and it shoots out with a pressure equivalent to the strength of the radium

itself, which is equivalent to more than 100,000 pounds per square inch. In that property of radium, which shoots out particles, we have the forerunner of some of the spectacular things that will be done tomorrow."

Kettering was born on a farm near Loudonville, Ashland county, Ohio, August 29, 1876, and was educated in the country district school, Wooster, Ohio, Normal. He was graduated from Ohio State university in 1904. In 1928 the University of Michigan conferred upon him the degree of doctor of sciences.

He conceived the idea of an electric self-starter for automobiles while employed by the National Cash Register company. He perfected the device in a barn loft at Dayton late in 1910 and it was taken to the world the next year.

HANDBAGS GIVEN AUTOMOBILE LINES PARIS (AP)—Handbags with the outlines of motor cars, made in the shades of the individual's private car, are a new offering on the market here.

The doors of the auto-bags open and close to accommodate powder puffs, handkerchiefs, lipsticks and the sundries of the modern woman. The bags sometimes match leather motor coats. They are available in many colors, however, ready made.

PLENTY OF CALLERS. "Is your daughter popular?" "Huh, I can't park within three blocks of my home!" —Iowa Frivol.

NEW WHIPPETS ARE ANNOUNCED

Four and Sixes Completely Redesigned, Set New Beauty Standard

Development of body lines that strike a note of beauty and quality, heretofore found only in cars that sell in the higher price ranges, is seen in Willys-Overland's announcement of its completely redesigned lines of Whippet four and six cylinder cars.

The lowness of the prices on both lines completes the marvel of the achievement, according to Gettings and Hanks, local dealers.

In presenting the new Whippet four and sixes, Mr. Willys says: "When the original Whippet was introduced, designed along lines that entirely revolutionized the light car field, it was predicted that within two years every car manufacturer in the Whippet classification would be forced to adopt the mechanical features first set by the Whippet or be relegated to the

obsolete group. This particularly applied to four wheel brakes. "That three predictions came to pass in less than two years in history, with other car manufacturers both in the low and higher price fields following the trend set by the Whippet.

Completely Redesigned. "And now we present the completely redesigned Whippet four and sixes, bringing to the low price class for the first time in automotive history high priced car value, beauty and advanced features, in addition to proved mechanical superiority.

There is no place in the low priced field for the manufacturer who fails to incorporate in his product the distinct new type of beauty and mechanical features introduced in the Whippet. To the manufacturer who fails to meet this trend we repeat the prediction of two and a half years ago, that he will find his cars stamped by the buying public as obsolete."

The advance report that the new models, which are designated as the Superior Whippet, would establish a precedent by bringing beauty and outstanding mechanical features into the low priced field is readily apparent, even in first glance at the striking new cars. They are notable for their larger bodies and increased roominess, while the new type of design with the sparkling color combinations is totally different from anything we have ever seen before in the low price classification.

Beauty And Quality. Every detail of the new Whippet bespeaks beauty of design and

quality of workmanship and finish from the trim, higher chromium plated radiator, to the carefully rounded lines of the rear quarters. The artistic lines of the body are admirably set off by the new type of sweeping one-piece fenders. The effective use of a belt moulding rounds out the artistry of the design.

There are many other new developments, all of importance.

NEW PERMIT DESIGNED. SALEM, Ore., Dec. 3 (AP)—Instead of a circular design enclosing a map of Oregon the non-resident automobile permits to be issued by the state in 1929 will be rectangular, enclosing the map, and within the map will be a picture of Mount Hood. The stickers will be printed in three colors, Secretary of State Hoas said today.

FIXING THE CRASH. "There was a fearful crash in the train struck the car. A few seconds later Mr. and Mrs. Pickens crawled out of the wreckage. Mrs. Pickens opened her mouth to say something, but her husband stopped her.

"Never mind talking," he snapped. "I got my end of the car apron. You were driving the back seat and if you let it get hit, it's no fault of mine!"—American Legion.

Grand Island, Neb., has taken over the landing field formerly operated by the department of commerce as an intermediate field and is using it as a municipal airport.

Start Assigning Motor Licenses About Dec. 10

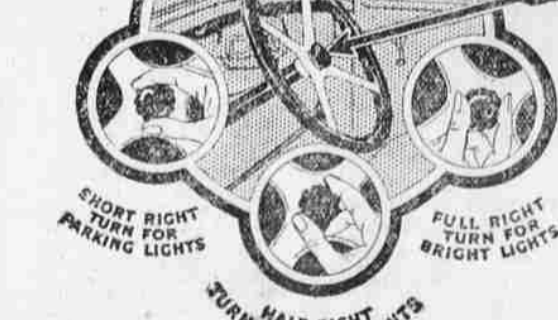
SALEM, Ore., Dec. 3 (AP)—Secretary of State Hoas announces that his department will begin assigning 1929 license plates to motor vehicle owners about Dec. 10. Applications blanks have been mailed. As usual car owners are urged to file their applications as early as possible so that congestion of work may be avoided as far as possible around the first of the year. Up to December 1, Hoas said, the 1928 registration totaled 252,272, while license and other fees aggregated \$6,958,649.95. It is estimated that by the end of the year the fees will total \$6,800,000. For Hoas predicts that the total number of vehicles registered will not be less than 265,000.

WASHINGTON (AP)—Paris has lower taxi rates than any other European capital, according to a table compiled by a French source, the Department of Commerce reports. The average fare in Paris is 7.1 cents a mile. London has the highest fare, 24.5 cents a mile.

First Constable: Did you get that feller's number? Second Constable: Naw, he was too goldarned fast for me. First Constable: That was a pretty brown-eyed gal he had in the back seat. Second Constable: It sure was.

ANNOUNCING NEW SUPERIOR Whippet Greater Beauty, Larger Bodies!

with "FINGER-TIP CONTROL" -the most notable advance in driving convenience since the self-starter



TODAY Willys-Overland presents for public judgment the new superior line of Whippet Fours and Sixes, setting new standards of beauty and comfort for low-priced cars. Roomier bodies, greater comfort. More spacious interiors in the new Superior Whippet afford added leg room and elbow room. The wider, form-fitting seats are deeply upholstered... all passengers enjoy restful positions. The longer wheelbase, plus the lengthened springs both front and rear, plus over-size balloon tires, and snubbers—all combine to the perfection of far easier riding under all driving conditions. Greater power, greater speed. In mechanical improvements the new Superior Whippet advances even over its famous predecessor. The new higher compression engine gives more than 20% added horsepower, resulting in increased speed, faster pick-up and greater hill-climbing ability. A com-

pletely redesigned steering gear makes the new Superior Whippet instantly responsive to the lightest touch. Through these further advances in scientific engineering, dependable performance and minimum operating costs are assured. Order now for early delivery. See the new Superior Whippet today. An inspection and a demonstration will reveal to you an entirely new standard of dollar-for-dollar value in low-priced automobiles.

WILLYS-OVERLAND, INC., Toledo, Ohio

Waiting is Wasting HUDSON-ESSEX The Only Super-Sixes LEDBETTER GARAGE Adams Ave.

What "Finger-Tip Control" means to you Greater Convenience: A single button, conveniently located in the center of the steering wheel, controls all functions of starting the motor, operating the lights and sounding the horn. This fundamental improvement does away with all troublesome foot fumbling for the starting button, a frequent source of annoyance particularly to women drivers. It also avoids changing from the comfortable driving position to reach a light switch on the dash. Greater Safety: With the new "Finger-Tip Control," you can at all times keep your hands on the wheel and your eyes on the road. An important safety factor, especially when driving at night.

GETTINGS & HANKS Cor. Fir and Jefferson.