

STATE WELCOMES SUMMER TOURIST

June Records Show Increase Over Same Month in Previous Year

SALEM, Ore., July 28 (AP)—Notwithstanding the lateness of the summer season in Oregon during the current year, the June record of registrations of tourist cars from other states shows a decided increase over the same month in previous years, says a statement today by Secretary of State Korer.

State records show that during May 12,219,794.3 gallons of gasoline were sold in Oregon, an increase of nearly 1,500,000 gallons over the same month last year. The tax on motor vehicle fuels for May aggregated \$386,310.82 bringing the total received by the secretary of state from this source during the first five months of this year up to \$1,477,264.93.

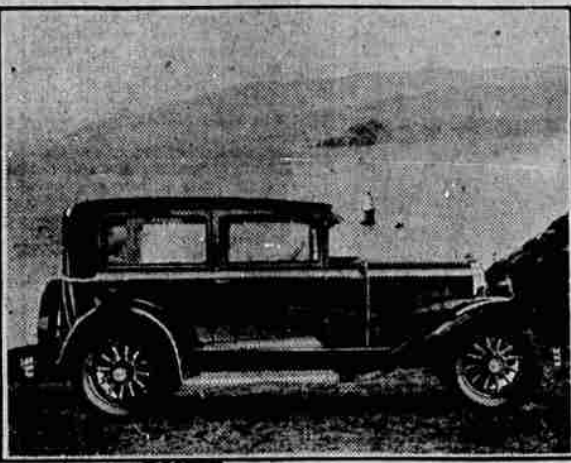
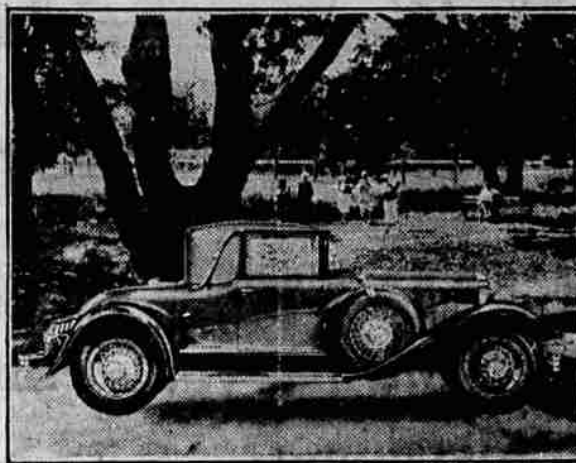
Business Plans Traffic Study

WASHINGTON (AP)—Elimination of avoidable wastes in modern business through scientific traffic management is the purpose of a study to be undertaken by the transportation division of the department of commerce.

Facts and figures will be collected on the movement of merchandise by railway, airway, waterway and highway in an effort to determine the relation of traffic departments to the efficient conduct of business.

Wastes resulting from inadequate attention to traffic matters, the cost of maintaining a traffic department, the relation of a traffic department to other branches of business and the relative importance of traffic management are some of the major phases of the inquiry.

BUICK PRESENTS SILVER ANNIVERSARY LINE



A complete line of new 1929 Buick motor cars, new in design and higher in power, is presented this week in showrooms throughout the country. Upper left is the new four-passenger convertible coupe, while on the right is pictured the two-door five passenger sedan.

HIGHWAY NEWS

Road and touring conditions sometimes change very quickly. The information given below was correct as of date of issue, but the motorist starting on a trip will do well to inquire at the nearest office of the motor association or the state highway department in order to get up-to-the-minute data.

All main roads in Oregon, Washington and California are in good condition and are carrying maximum traffic. The tourist season, after a late beginning, is on and in full blast.

Tourists this year, are using cabin camps to a greatly increased extent and all over the country these camps, sometimes representing a tremendous investment, have sprung up like magic. A chain of cabin camps, representing an investment of some \$200,000 for each unit, is now planned. Units will be established in every large city in the country.

Redwood highway in spite of new construction, is carrying a considerable volume of traffic, due to the well-advertised scenic attraction of this road in addition to the fact that it offers a loop trip to the Oregonian touring in California.

You may go by either the Redwood or Pacific highway and return by the alternate route. This scenic route is in fair condition throughout. The only inconvenience is experience between the Klamath river and the town of Orick. This piece of road will be found somewhat dusty and during working hours it is operated under the following control system: Automobiles are permitted over the road from both ends at 8:45 a. m., 11:15 a. m., 12:15 p. m. and 2:45 p. m. The road, however, is open all night from 5:30 p. m. until 7 a. m.

The Pacific highway is in good condition south into California with the exception of construction work between La Moine and the Shasta county line in California.

At Boulder creek there is a sharp turn where a bridge is being installed. This piece of road is well signed but motorists should use great caution in approaching the curve. North of Boulder creek there are four large steam shovels at work and numerous trucks engaged in hauling material. There are flagmen at each shovel so there is no danger but careful driving is recommended.

In North Carolina, teachers are required to discuss before pupils once a month a digest of state traffic laws, according to the Oregon State Motor association.

BUICK ANNOUNCES ITS NEW MODELS

Line of Cars Commemorates 25th Anniversary of the Company

With announcement today of the Silver Anniversary Buick, commemorating the 25th year of operation of the Buick Motor company, the impatiently waiting automobile public has been given the answer to its oft-repeated query concerning the nature of the 1929 offering of this great leader in the fine car field. M. J. Goss, local dealer says that the new car bodies advances thus far unachieved in automobile offerings. The tremendous advances in beauty, style and comfort, as well as in every item affecting performance, combine to make the Silver Anniversary Buick an automobile new and totally different from anything the public has known.

Taking as a nucleus Buick's famous six-cylinder valve-in-head engine, torque tube drive, sealed chassis, cantilever springs, double drop frame, Buick engineers have refined and improved these units, and created around them a motor car of radiant beauty and dashing style, a car which is easy to operate and comfortable to ride in, and finally, one which is said to outperform, under all conditions, not only its own predecessors but any other car within hundreds of dollars of its price.

And—this being the gratification of thousands of prayers—the Silver Anniversary Buick appears with refreshing individuality in its climax of a season of many mid-summer car announcements. Outstanding departures from convention are found in the new and daring treatment of body lines, the dazzling new colors in lustrous finish, and the lavish use of enduring chromium, which serves to differentiate the car at first glance from other automobiles of today. Less apparent to the casual eye, but no less vital, is the enlarged and improved power plant which provides an unsounded reservoir of energy for any and all needs.

Description of the new Buick is made difficult for the fact that there is no car on the road to which it may be compared. However, among sensational innovations affecting its appearance may be listed the gentle "swelling" of the body, just below the windows, which are gracefully arched across their tops where they were formerly straight. The side and roof lines blend in a pleasing curve which is carried around the sides and rear of the car. There is a graceful new radiator emphasizing the curve motif further; new one-piece front fenders and extra long and deep rear fenders, new running boards bound on all four sides in aluminum and shaped along its outer edge to harmonize with the body lines; and new full-finished rear end with large gasoline filler inlet on one side and new combination tail stop and backlight, mounted on a heavy steel tube which encloses all wiring, on the other.

Smaller Wheels. Smaller wheels and larger section tires still further enhance the car's appearance, making the new Buick seem lower, though its road clearance is actually unchanged. Large new hubs, new easy-on radiator cap, and re-location of the Buick trademark—in a new and distinctive monogram—on the radiator honeycombing instead of the shell, lend additional touches of beauty. The new head and parking lamps, on their chromium-plated brackets, also are noteworthy features.

There are numerous interior refinements making for beauty and riding and driving ease. Sweeping chassis improvements represent a tremendous advance in power and safety. Wheelbase lengths have all been extended, the 114 1/2-inch becoming 116-inch, the 126-inch becoming 121-inch, and the 128-inch, 129.

increase in weight. So far as design goes, there is now no difference between the engines of the various models in the Buick line. Buick's firmly established policy of adopting innovations only after exhaustive tests has guided preparation of the Silver Anniversary Buick. While some of the mechanical changes, notably addition of the mechanical fuel pump, are seemingly radical departures, none of them affect the car's basic design. Each change is announced only after relentless trial at the General Motors Proving Ground and after measuring up to a standard befitting the successor to the more than 2,000,000 Buicks previously produced.

Eighteen models make up the Silver Anniversary Buick line. The two-door five passenger sedan, the five-passenger phaeton, the four-passenger business coupe, the two-passenger special coupe, and the five-passenger four-door sedan are offered on the 116-inch wheelbase; the four-door five-passenger close-coupled sedan; the four-passenger sport roadster, the two-passenger business coupe, the five-passenger special coupe, the five-passenger sedan and the seven-passenger touring car on the 121-inch wheelbase, and the seven-passenger sedan, the four-door five-passenger close-coupled sedan, the four-passenger de-lux convertible coupe, the five-passenger sport phaeton,

NASH 400 SERIES MODELS TO COME

Official Announcement in La Grande Is to Be Made Shortly

Motorists of this section of the state will have the opportunity of inspecting the new Nash 400 series within the next few days. An official announcement of a local representative will be made shortly, it is said.

The Nash Motor company is reported to have expended approximately two and one-half million dollars in retooling their three great factories and body plant preparatory to introduction of the new line.

The 400 series is composed of chassis in three sizes on four wheel base lengths and in 18 models. The Standard Six is priced from \$1666 up, the Special Six from \$1485 up and the Advanced Six from \$1730 up. These prices are delivered and include full equipment.

It is reported that the new series is capable of a top speed of 70, 75 and 80 miles per hour, respectively.

New features include saion bodies, twin ignition motor, aircraft type spark plugs, high compression, etc.

Of his new line of cars, C. W. Nash has said "It has been the ambition of my career to build such a car as the 400 series."

AIR-RAIL FREIGHT SERVICE

BERNE (AP)—Swiss air traffic companies have made an arrangement with the Swiss federal railways for combined air and rail freight service. Airlines are empowered to issue through bills of lading for the transport of merchandise from stations in Switzerland to foreign airports, the bills specifying the portion of the journey to be covered by air.

TRIPOLI GETS LOAN

TRIPOLI (AP)—Tripolitania and Cyrenica are soon to benefit from a 100,000,000 lire loan (about \$2,250,000) authorized by a recent royal decree. This will facilitate road building, irrigation and reclamation projects already under way.

the four-door five-passenger sedan, the popular five-passenger coupe, and the seven-passenger sedan-limousine, designed primarily as a chauffeur-driven car, on the 129-inch wheelbase.

Speed Limits In Various States Given Tourists

Oregonians who travel afar will meet a variety of speed limits and, for their information, the following compilation has been made by the Oregon State Motor association.

California and Washington's maximum speed is 40 miles on the open road and 20 miles in residential sections of cities.

In Oregon or Arizona the limit is 35 miles, and 45 in Nevada. Legal limits for the open road range from 20 miles an hour in Massachusetts to 45 miles in Alabama, Florida, Nevada and North Carolina. In 23 of the 48 states 35 miles an hour is the limit. There are eight states which have the 40-mile limit written into their laws.

Michigan and Montana have no prescribed maximum but insist that the driver shall avoid recklessness and penalties are imposed where the speed is judged dangerous. Massachusetts is a 20-

mile limit state. The District of Columbia has a 25-mile limit, Missouri and South Dakota are the only two states with 25-mile limits. Altogether there are eight different speed limits to be observed in crossing state lines, so it is well for motorists making long trips to familiarize themselves with the speed regulations in other states, advises the Oregon State Motor association.

Motor Figures Show German Prosperity

BERLIN (AP)—High tide of prosperity in Germany is indicated in figures just published by the German League for Automobile Trade showing that the demand for motor cars in Berlin exceeds the supply by 17,000.

More than 6000 automobiles are needed in Hamburg says the survey, 4000 in Frankfurt, 3400 in Leipzig and 3000 in Munich. These results were obtained by an analysis of population and income statistics in cities of 100,000 inhabitants or more.

When You Vote!

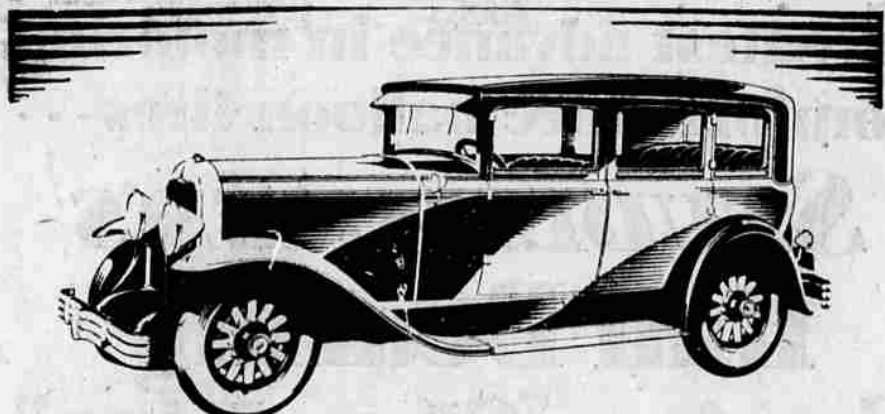
You pick the man you think is best suited for the job. Your motor will reflect the same judgment if you give it a chance. Try all the brands of gas and oil -- then after doing this, let your motor get acquainted with VELTEX Gas and Oil (they work best together).

Teach your \$ to have more cents --- USE

Veltex Gas and Oils

T. R. MAXWELL, Distributor

Next Saturday we will give you a list of dealers who will be glad to serve you.



Now on display!

The news is out! The whole thrilling story of the Silver Anniversary Buick awaits you at our Buick showroom! And it is news that is completely revising the motor car ideals of America!

New Masterpiece Bodies by Fisher more brilliant and beautiful than any heretofore known—a tremendous increase in power in what was already the most powerful automobile engine of its size—new elements of speed, pick-up and acceleration far beyond any previous standard... these are high-light features of a car so new, so advanced and so epochal that it is winning universal recognition as the great car of the world.

Visit our Buick showroom. See the Silver Anniversary Buick—today!

The SILVER ANNIVERSARY BUICK

WITH MASTERPIECE BODIES BY FISHER

WHEN BETTER AUTOMOBILES ARE BUILT... BUICK WILL BUILD THEM

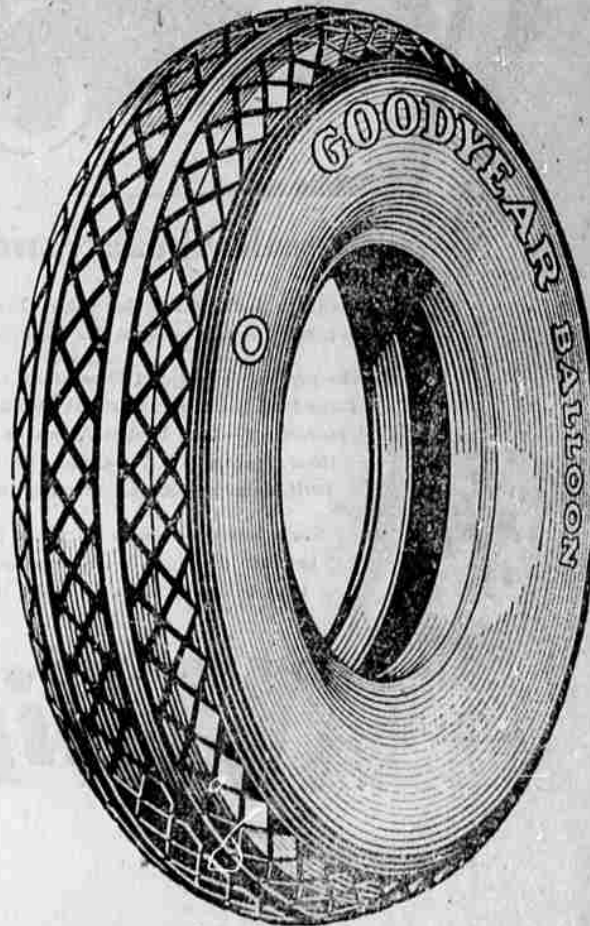
M. J. GOSS Adams & Fir

GOODYEAR

The Greatest Name in Rubber

These Famous Tires Now Available to All— at Lowest Prices In Tire History —and they are better than ever

Use Our Credit Plan Pay a Little Down— Balance as You Ride



Bohnenkamp's