

### PACIFIC COAST OFFERS SCENERY

#### Good Roads and Natural Allurements Attract Many Motorists

For variety of scenery, accessibility by good roads, perhaps no part of the United States offers as many allurements to the motorist as does the Pacific coast.

In this land of the great outdoors which is within the compass of the average motorist's vacation period, the scenic wonders of the world are grouped into a vacation land supreme. Here is natural beauty and grandeur unsurpassed.

To motor in comfort over the 10,000 miles of paved boulevards which cover this vacation land is not only the equivalent of a trip abroad in your own great homeland, but is to know the romance of your own Pacific coast.



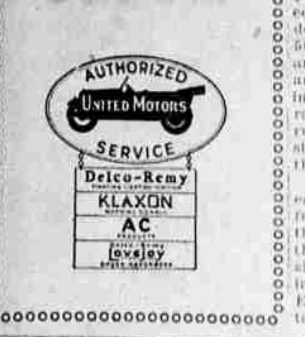
### Ask yourself these questions about your car

- Q. Why is my car equipped with an AC Oil Filter?
  - A. To insure a constant supply of clean oil for the engine.
  - Q. How can I find out when this Oil Filter needs attention?
  - A. By having it tested without charge at regular intervals.
- Dirt in oil means wear. That's why you should have the Oil Filter tested. An AC Renewal Cartridge makes it as good as new. If your car needs a Renewal Cartridge, we'll tell you so. We'll install the cartridge, if you say so. Drive in today.

**A 6-Volt BATTERY \$7.45**

Your old battery taken in trade

**Dale Cox**



scenery encountered would be as difficult as for the camel to pass through the eye of the proverbial needle for who can say the mountain, with the noble trees which clothe its sides, is more wonderful than the ocean; the mystic appeal of the desert more charming than the fringe of a grove, or that the mountain lake has greater charm than the rushing river. Each has its own individual appeal.

If the urge calls you to the seashore, you may park your car at any one of a thousand beaches and bathe in the balmy waters of the Pacific. If the desire is for the desert, you may walk over a delightful Sahara with its soft carpet of awaying, brilliantly colored flowers. If you hanker after the majestic grandeur of the mountains and the vivid colorings of the mountain lakes, these are within easy reach.

Within the confines of the Pacific coast vacation land are 12 national parks, regions of giant mountains, dense forests, rushing rivers and lakes. There is the Grand Canyon; Yosemite; General Grant; Mt. Lassen; Crater Lake; Mt. Rainier and the Canadian Rockies and national parks.

Much of the pleasure of a vacation tour by motor depends upon its careful preparation. Motorists want to know the condition of the roads, the interesting spots that may be seen along the way, and distances between stopping points so that convenient stopping-over points may be decided upon. For the convenience of motorists, the Union Oil company has issued a new 12-page map folder of convenient pocket size, which is more than a mere publication of routes and listing of points of interest. In addition to providing the motorist with the most up-to-date information on highways and trails in Arizona, California, Nevada, Oregon, Washington and British Columbia, it contains a complete list of auto camps along the main traveled highways, information on the choice scenic zones in the national parks and a map of the park-to-park highway.

These maps are distributed gratis to all motorists through the thousands of Union Oil stations and independent dealers handling Union Oil products, extending from Mexico to British Columbia.

Conservative estimates place the number of those who will spend their vacations on wheels this summer on the Pacific Coast at over 2,000,000 excluding those tourists from eastern states. For the benefit of those or for those who wish to plan a trip where "no scene is twice seen," the Union Oil maps are offered for distribution.

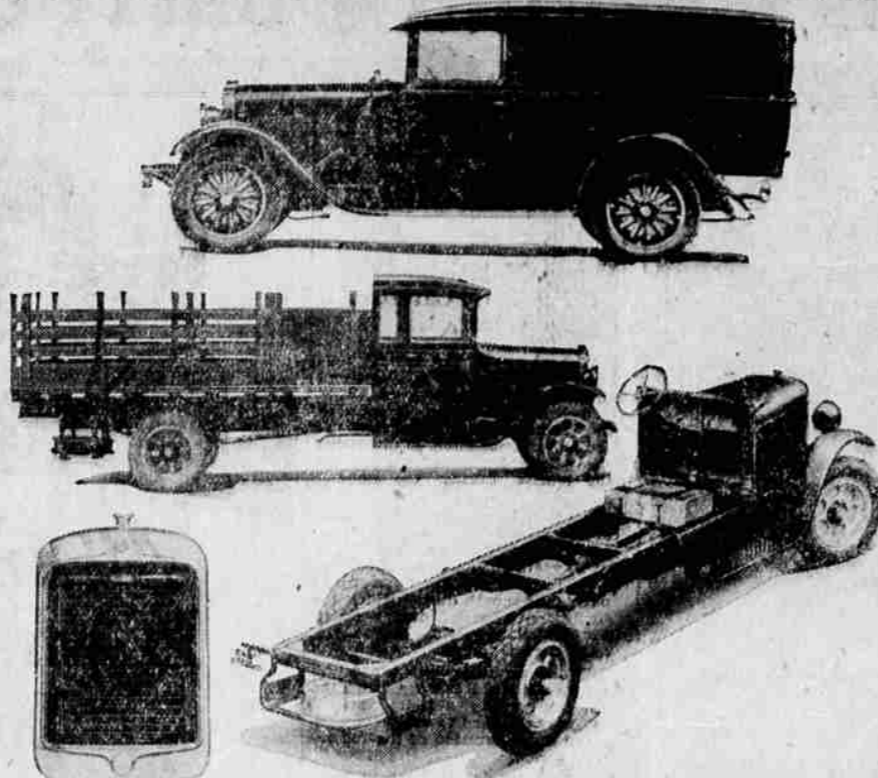
### Steel Prevents Destruction Of Studebaker Body

Dramatic proof of the safety of steel bodies was given recently when an unoccupied Studebaker Commander Victoria plunged over a 227-foot embankment near Rutland, Vermont, was then struck by a speeding train. Although badly smashed and battered, the steel body of the car retained its original shape, according to word received by M. J. O'Connell, dealer.

The accident was caused by a careless driver, who smashed his car into the Commander as it stood parked on the top of the embankment. The impact of the crash pushed the Commander over the edge of the cliff and it plunged down head foremost, for more than 50 feet. Then it struck a stump and turned a complete somersault, and after rolling over many times in further descent landed on a railroad track in front of the on-rushing Canadian Flyer. The train struck the car a glancing blow and threw it off the right-of-way.

Following the accident the owner examined his Commander. He found all four wheels gone and the radiator badly damaged, but the body was still in its original shape and there was no difficulty in opening and closing the doors. Even the glass in the rear quarter windows was not broken.

### Graham Brothers Trucks Now All Sixes



**TWENTY THREE** types of six cylinder trucks in five capacities from 1,000 to 5,000 pounds have been announced by Graham Brothers, the truck division of Dodge Brothers, Inc. Four wheel brakes on all models, and four speed transmission in the three heavier capacities feature the line. The Merchants Express with panel body is shown at the top; the one and three quarter ton stake truck is in the center, and the chassis of the two and one half ton capacity is shown below. At the left is a front view of the radiator, all models being equipped with shutters except the Merchants Express.

### Heavier Demand For Standard 6; Output Speeded

Production of the new Willys-Knight Standard Six line of motor cars has been speeded up materially during the past few weeks and will be continued at high production, according to officials of the Willys-Overland company. This has been necessitated by a continually growing demand for these Knight engine sixes which round out the company's group of Willys-Knight cars.

The Willys-Knight Standard Six made its initial appearance a few months ago and immediately won a conspicuous position among the sixes in its price classification. After hundreds of these models had been placed in the hands of buyers, there was a noticeable increase in the demand for the Standard Six which Willys-Overland merchants attribute to the outstanding performance of the car together with its introduction in the lowest price range ever reached by a Willys-Knight car.

In power and speed accomplishments the Willys-Knight Standard Six is said to set a new high standard of performance while the quiet and smooth operation of its six cylinder power plant ranks on a parity with the Willys-Knight sleeve valve engines employed in the two higher priced series of Willys-Knight sixes.

The Standard Six in nearly every respect retains the same characteristics of design, performance and appearance as featured in the Willys-Knight Special Six and the Willys-Knight Great Six, and gives the company complete coverage in the Willys-Knight division with the price range from \$295 on the Standard Six to \$2,695 on the Willys-Knight Great Six.

This Knight engine model is marked by smart body lines with

### HEALTH

**DIET NEEDS ADJUSTMENT**  
By U. S. Public Health Service  
WASHINGTON (AP)—The man who essays 18 to 26 holes of golf in a broiling sun immediately after eating a heavy meal is taking a health hazard that is fairly certain to give him a vitality score below par and occasionally has fatal consequences.

He is one of many who still neglect to make one of the most important adjustments needed with the advent of hot weather—the selection of a suitable diet. Happiness, efficiency and vitality can be increased in the summer, public health service investigators have learned, by reducing judiciously the food intake of the body.

In general, the diet should consist of more vegetables and fruits and less meats and other heavy, heat-producing articles of food. Each of the two principal meals should include not less than two green vegetables. Oranges, lemons, pineapples and other fruits can be made the basis for many healthful and refreshing hot weather preparations. Milk is an ideal year-round food. Many people do not drink sufficient water. At least eight glasses a day are recommended.

After adjusting the diet one can surely increase the amount of exercise. Numerous innovations in interior appointments. The rich upholstery employed in the Standard Six blends perfectly with the striking color combinations of the exterior.

### WHO'S WHO?



These two men who look so much alike are strong rivals in a political way. Sen. Charles Curtis, Republican vice presidential nominee is counted on to swing many a vote to Herbert Hoover while William F. Kenney, wealthy New York contractor, is a powerful backer of Gov. Al Smith. That's Kenney at the top.

### Dodge Brothers Export Sales In Substantial Gain

Continued improved conditions in the foreign automotive market are evidenced by the export of 3514 units of Dodge Brothers cars and Graham Brothers trucks from the plants in the United States and Canada during May. Compared to May a year ago, when 3246 units were shipped, this represents a gain of 568 units or 17.5 per cent, and an increase of 865 units or 29.3 per cent over April, 1928.

The plant of Dodge Brothers, Ltd., in Canada reported the best month in its history during May with shipments of 1347 passenger cars and trucks, the best previous month being May, 1926, with a total of 1341. The record of 1347 units is a gain of 742 or 122.6 per cent over May a year ago, and 255 units or 49 per cent over April this year.

Increased demand for passenger cars and trucks is reflected by Dodge Brothers' total shipments for the first five months of this year compared to the corresponding period last year. A total of 162,558 units was shipped from the plants in the United States and Canada for the first five months of 1928, compared to 83,781 for the corresponding period last year, a gain of 15,777 units or 22.4 per cent.

Shipments for June indicate these substantial gains over 1927 will be maintained for the first half of the year, both in the passenger and commercial car sales.

Evidence of the leadership of Graham Brothers trucks is shown in new commercial car registrations from Jan. 1 to April 30th in California, Nevada and Arizona, typical of gains made in other parts of the country.

In California, new Graham Brothers trucks registered represented 24 per cent of all makes; in Nevada, they represented 37.9 per cent and in Arizona, 25.3 per cent.

Tip to the oil men: We have a friend who will buy a car just as soon as filling stations are put on the installment basis.

### FLIGHT'S END



The arrow indicates Harry Inlet, South Wales, where the transatlantic airplane "Friendship" landed at the completion of its voyage from Newfoundland. With Amelia Earhart, Wilmer Stullis and Lon Gordon aboard, the "Friendship" made the 2000-mile trip in about 20 hours.

### Ford Feature Is Theft-Proof Ignition Lock

One of the features of the new Model A Ford car which is typical of the care that has been devoted to details of design, is the theft-proof ignition lock with which it is equipped.

Many automobile ignition locks, designed to lock the switch against theft of the car, have been little or no safeguard against the clever thief with some knowledge of automobile ignition systems. The thief could simply reach behind the instrument board, cut the wires back of the switch and make a new circuit on which the ignition would operate perfectly.

This cannot be done on the new Ford, because the wires run direct from the switch into an armored conduit which is integral with the dash. In order to tamper with the switch the thief would either have

to take the instrument board to pieces or cut the steel dash or armored conduit. Except under the most extraordinary circumstances, no thief would have the tools, the time or the freedom from possible interruption necessary to the completion of such a difficult and tedious task.

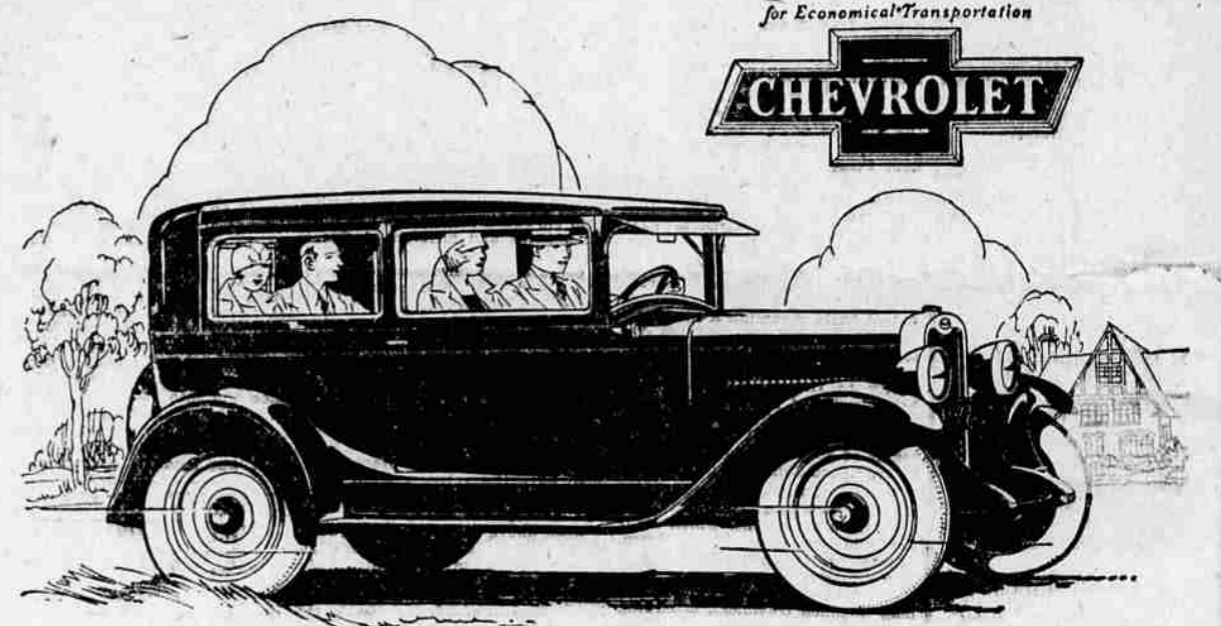
### Four Wheel Brakes

Need expert attention to be properly adjusted. We are equipped to

Test Them on a Scientific Machine

### RUSCO Relining

Brandt & Jennings Bohnenkamp Bldg.



# An amazing example of "Quality at Low Cost"

Here are smoothness and power that make every mile at the wheel a pleasure—for the world-famous Chevrolet valve-in-head motor now incorporates advances of basic engineering advancements! Here is beauty that wins the admiration of everyone—for the distinctive new Fisher bodies represent one of the greatest style triumphs ever achieved by Fisher body craftsmen!

**THE COACH**

**\$585**

The Touring or Roadster.....	\$495
The Coupe.....	\$595
The 4-Door Sedan.....	\$675
The Convertible Sport Cabriolet.....	\$695
The Imperial Landau.....	\$715
Utility Truck (Chassis Only).....	\$495
Light Delivery (Chassis Only).....	\$375

All prices f. o. b. Flint, Michigan

what the buyer of a low-priced car can now secure for his money!

**Every Modern Feature of Advanced Design**

Improved valve-in-head motor; 107-inch wheelbase; Non-locking 4-wheel brakes; Thermostat control cooling system; Invar-strut constant-clearance pistons; Mushroom-type valve tappets; Hydro-laminated camshaft gears; Crankcase breathing system; Ball bearing worm-and-gear steering; One-piece steel rear axle housing; Streamline bodies by Fisher; AC oil filter; AC air cleaner; Alemite pressure lubrication; Vacuum fuel feed; Delco-Remy distributor ignition.

Here is handling ease that never ceases to be a delight—for the worm-and-gear steering mechanism is fitted with ball bearings throughout!

And here is riding comfort you never thought possible in a low-priced automobile!

Removal of War Tax Lowers Delivered Prices!

## Blue Mountain Garage

M. A. HARRISON, Mgr.

Opposite P. O.

### QUALITY AT LOW COST

From Coast To Coast

# TEXACO

The same high-grade gasoline.

The same golden motor oil.

Uniform quality - - the same courteous and expert service.

Wherever you go - - the TEXACO sign greets you.

## The Texas Co.

AUDMER PLAYLE, Agent