

# We Are Ready for Spring

New Suits and Topcoats  
New Shirts - New Neckwear - New Hats  
New Oxfords  
---come in, let us show you Fashion's latest decrees.

## Westenhaver Inc.

"The Store For Men"

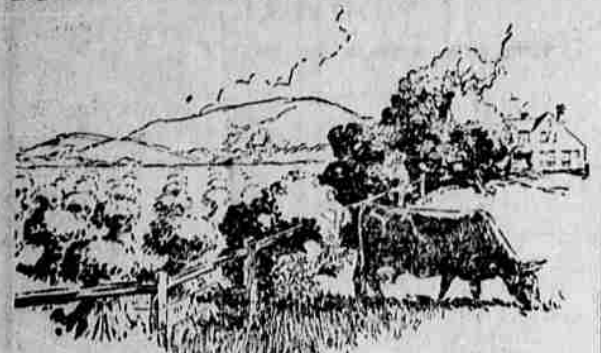
### Wheat Irregular In Chicago Mart

CHICAGO, Mar. 1 (AP)—Starting 3/4 to 5/8 up, wheat later scored some additional gain. Corn opened unchanged to 1/8 higher, and afterward showed advances all around, but then dropped sharply. Provisions went up grade.

Wheat closed irregular, 1/2 net lower to 1/2 advance, corn nervous, 1/2 to 1/4 down, oats varying from 1/2 decline to 1/2 advance and provisions unchanged to 1/2 up.

SAN FRANCISCO, Mar. 1 (AP)—U. S. Bureau Agricultural Economics—Wheat: 1 to 1 1/2 lbs., 42-44c. Young roosters and pullets: Colored, 3 1/2 to 4 lbs., 27-29c; over 4 lbs., 24-25c.

## How easy it is to balance your diet if you follow Nature's advice!



BALANCE your diet—science tells us—eat just so much protein, so much starch, so much mineral matter. Good advice! Yet to get that balance there's no need to fit meals together dish by dish. Nature has done the balancing for us in a single food—whole wheat.

Shredded Wheat is all of the wheat simply steam-cooked, shredded and toasted. It supplies body-building proteins, energy-giving carbohydrates, mineral salts—each in the right proportion—along with vitamins and just enough bran to keep your system clear.

With milk or cream and sugar, or topped with fruits or preserves, there's no dish more healthful, more satisfying.

Why not give Shredded Wheat a daily place on your table? What simpler way to balance your diet than by eating this naturally balanced food?

# Shredded Wheat



THE LARGE 12 OUNCE PACKAGE

## HARMONY REIGNS IN DAIRY MARKET

### Four Resignations Tended in Portland Recently Are Withdrawn

PORTLAND, Ore., Mar. 1 (AP)—Harmony reigns again in the Portland dairy exchange with the withdrawal of the four resignations recently tendered by the poultry producers' association, the Eaton and Dixon, the Marian Produce company, and A. T. McCauley. A committee consisting of B. J. Holmes, A. T. McCauley, E. J. Dixon, E. L. Martindale, J. J. Shiekler, Professor Grant, of O. A. C., and L. A. Brandes was appointed on suggestion of E. J. Dixon to investigate charges which led to the resignations.

Disappointed members alleged that a few members of the exchange were selling eggs at prices other than those set at regular trading sessions and that membership should be restricted to bona fide dealers in butter and eggs and dairy products.

No price changes. No changes in prices of other eggs or butter followed the session yesterday, although trading was active. Butterfat continues to bring high prices with creameries bidding against each other keenly. Eggs are moving into storage in some amounts, the pollings at present approximating 700 cases, a 10-15% below last year's total at this time.

Hogs continue decidedly weak on the country dressed meat markets with ruling prices today around 11 1/2 to 12c, most sales bringing the lower figure. Veal was steady today at 26 1/2 to 27c, while lambs continued in good demand around 24 1/2 to 25c to a shade higher.

Some speculating is going on in the potato division, but prices are not noticeably changed, and movement continues average. Onions are likewise quiet with prices quoted steady.

Broccoli shipments from the Umpqua valley continue heavy but prices are steady to firm with the quality of the offerings reported good and mostly of No. 1 grade stock.

NEW YORK FRUIT  
NEW YORK, Mar. 1 (AP)—Dried fruits steady.

BUTTERFAT  
SAN FRANCISCO, Mar. 1 (AP)—Butterfat 1 c. b. San Francisco, 48 1/2 c.

## MARKET NEWS OF THE DAY

Wheat	CHICAGO GRAIN		
	Open	High	Low
March	134 1/4 @ 134 1/4	134 1/4	134 1/4
May	135 @ 135 1/4	135 1/4	134 1/4 @ 134 1/4
July	134	134	132 1/2 @ 133

### Close Irregular In Wall Street; Sales 1,800,000

NEW YORK, Mar. 1 (AP)—Stock prices turned upward early this afternoon after playing an important part in the buying movement, particularly in such issues as American International, Radio and International Nickel, all of which recorded substantial gains. Net advances in the general list ran from 1 to 4 points, but these were interspersed with a sprinkling of losses almost as large.

The closing was irregular. Efforts to extend the rise in the late afternoon under the leadership of General Motors and U. S. Steel, which crossed 153 and 149, respectively, were frustrated when the bear element distributed large selling orders in some of the popular specialties. Early gains by Nash and Studebaker were cut down materially and there was a further sharp decline in Continental Bank. A. Total sales approximated 1,800,000 shares.

CHICAGO CASH  
CHICAGO, Mar. 1 (AP)—Wheat—No. 2 red, \$1.50; No. 2 hard, \$1.37 1/2.  
Corn—No. 4 mixed, 88 1/2 @ 91 1/2; No. 3 yellow, 96 1/2 @ 97 1/2 c.  
Oats—No. 2 white, 59 1/2 @ 62 1/2; No. 3 white, 58 1/2 @ 60 1/2.  
Rye—No. 2, \$1.17 1/2.  
Barley—25c @ \$1.04.  
Timothy seed—\$2.70 @ 3.50.  
Clover—\$19.25 @ 26.75.

CHICAGO LIVESTOCK  
CHICAGO, Mar. 1 (AP)—U. S. Department of Agriculture—Hogs—25,000; around 18 1/2c higher than Wednesday's average; mostly to shippers, traders and small packers, big packers bidding steady; spots, 19 1/2 to 20 1/2c; grade light hogs, 18 1/2 to 19 1/2c; top 45,000; bulk better grade 17 1/2 to 21 1/2c, average \$8.25 @ 8.45.  
Cattle—7,000; better grades fed steers strong to unevenly higher; weighty kinds up most; demand active; buyers wanting either well finished light offerings or kinds weighing 1,200 lbs. upward; vealers 20c lower; \$16.50 for weighty bullocks on shipper account; some held higher; bulk fat steers \$14.50 down to \$13; market on light vealers good to choice shipper and small killer kinds \$14 @ 14.50; few \$15.  
Sheep—9,000; bulk fat lambs slow; packers bidding weak to lower; few sales choice 80 to 84 lbs. lambs to outsiders strong to 25c higher; upward to \$15.50; better grades 87 to 95 lbs. lambs, choice around \$15.50 @ 15.75; sheep slow; about steady; few good to choice fat ewes \$9 @ 9.25; feeding and shearing lambs unchanged; good kinds \$14.25 @ 14.50.

PORTLAND LIVESTOCK  
PORTLAND, Ore., Mar. 1 (AP)—Cattle and calves steady. Receipts 55, including 58 through Steers (1900 to 1200 pounds), good \$11.75 @ 12.60; do medium 9.20 to 11.00 pounds \$12 @ 12.60; do 800 pounds up medium \$10.50 @ 12; do all weights common \$9 @ 10.50; heifers good 850 pounds down \$10.25 @ 10.50; do common to medium \$9 @ 10.25; cows good \$9.50 @ 9.75; do common to medium \$8.75.

### FIND IT HERE

Copy for this column must be in by 9 a. m.

INSURANCE AND BONDS  
Everything but Life Insurance  
U. S. INVESTMENT CO.  
O. W. WARNOCK 1-12-07

COOKED FOOD SALE  
Saturday, Mar. 3, Crescent Meat Market. Given by the Presbyterian Bible class. 3-1-27

BRIDGE PRIZES  
New things are daily arriving at Richardson's Art and Gift Shop, all suitable for bridge and party prizes. 2-1-11

The Home League will have a Bazaar and Cooked Food Sale at the Melville Bldg., Saturday, Mar. 3 3-1-21

LADIES  
Mrs. Ivo Moody is now connected with the Colonial Beauty Shop. For appointment call Main 539. 2-1-21

FARM LOANS: LOWEST RATES.  
SCHOOL FUNDS also available.  
U. S. DIXON, Foley Building, LA GRANDE, ORE. 2-1-11

You will want to see our new stock of wallpaper. We have all grades and all prices. Noah's. 2-1-11

Remounting, repairing, watercolor holes, etc. Norton's Kiddy Shop. 109-144 2-1-11

SAVE ON PICTURE FRAMING  
Now is the time to have your pictures framed at a real saving. Take them to Richardson's Art and Gift Shop. Special discount on all frames this week and next. 2-29-11

## COLONIAL

THE FAMILY ENTERTAINMENT

TODAY AND FRIDAY  
JOHN C. FLINN PRESENTS

# NO CONTROL

HARRISON FORD & PHYLLIS HAVER

Pathe News Felix Shatters the Sheik

## GENERAL ELECTRIC Refrigerator

## Extremely Simple

Unlike any electric refrigerator you have ever seen, the General Electric has no belts, fans, or drain-pipes. It has no mechanism under the cabinet—and none in the basement. You never need touch it—never need oil it. All you have to do is plug it into any electric outlet. Instantly it starts—automatically it gives you perfect refrigeration.

Your food needs scientific cold all the year round. Get the benefits, the economies, the convenience of simplified electric refrigeration—and get them right away.

## W. H. Bohnenkamp Co.

## THE CONQUEROR

## 10 Years Ago Today

The La Grande high school basketball team won the Eastern Oregon championship last evening by defeating Baker 65 to 11.

Smells Like Spring

### Spring Blossoms PERFUME

Dainty, Delightful, Alluring

## L. & L. Drug Co.

# J.C. PENNEY Co.

A NATION-WIDE INSTITUTION

PAY CASH  
PAY LESS  
NO BILLS  
TO DISTRESS

A HELPFUL STORE,  
PAY LESS,  
GET MORE!

"quality—always at a saving"  
108 Depot St., La Grande, Oregon

## Thoroughbred Style and Throughgoing Values in Clothes for Men and Young Men

Giving the Dollar Its Just Due.

You are interested of course, in seeing that your dollars are spent where they will bring the greatest returns in quality, quantity and satisfaction.

The J. C. Penney Company does not underestimate the value of the American dollar. We believe in giving it its just due.

That's why every dollar you spend here will bring you a full 100 cents' worth of value, and more, frequently, if based upon what other charge for the same quality of merchandise.

Buying for our hundreds of stores, combined with efficient, economical business methods, assures you quality merchandise at lowest possible prices.

### Advance Spring Styles Assured Quality—Dominant Value—Moderate Price—

All these are included in the Suits for Men and Young Men. Worsted in grey, brown and blue; cassimeres and twists in greys, tans and brown.

Plenty blue, brown and grey serges and blue chevot. We have gone the limit in producing these exceptional values at—

# \$19.75

Extra Pants if Desired, \$4.98

### New Marathon Hats for Spring

Here's the "Paragon," our feature hat with stitched-welt edge and curl brim. New browns and greys. Every detail of make and finish is of the best; satin lined. An exceptional value at—

## \$4.98

### Men's Worsted Pants

Well made in stripes and mixtures. Wonderful values at these very low prices—

## \$3.98 to \$5.90

### Calf Oxford Half Rubber Heel

Boys, you can always use an extra pair of Oxfords at this splendid price. Brown calf, rubber tap heel.

## \$5.50

### Fine Broadcloth Pajamas

Featuring our own exclusive printed patterns; shirt collar or french neck; values outstanding at—

## \$1.98

### A World of Style With Dominant Value

Ask to see the "Collegiate" model, the last word in style for young men.

New light greys; Smart new tans; Cassimere Twists; Staunch Wool Fabrics; Built-In Quality

Patterned after the Young Men's own style ideas; made and finished to our own critical standards. See the suits at—

# \$24.75

Extra Pants if Desired, \$5.90

### Boys' Suits 2 Pairs Pants

Two and three-button model; Vest; one pair longies and one pair golf knickers; two pairs knickers or two pairs longies.

## \$7.90

### Boys' Shirts Printed Broadcloth

Just the thing for that boy of yours! Collar attached; many stripe effects, white and colors.

## 98c

### Dress Shirts Exclusive Patterns

Fancy printed broadcloth, and Rayon striped broadcloth, handsome designs.

## \$1.98

4-9-25; low cutters to cutters \$4 1/2 to 6.75; built yearlings excepted best good \$7 @ 7.45; do common and medium \$6 @ 7; calves 600 pounds down medium to choice \$10 @ 12; do cuts to common \$8 @ 10; vealers milk fed choice \$12 @ 14; do medium \$11 @ 13; do cuts to common \$8.50 @ 11.

Hogs steady, 110 all direct. Heavy weight 250 to 300 pounds medium to choice \$7.75 @ 8.75; medium weight 200 to 250 pounds medium to choice \$8.25 @ 9.2; light weight 160 to 200 pounds medium to choice \$9 @ 9.25; light lights 120 to 160 pounds medium to choice \$8.50 @ 9; packing hogs, rough and smooth \$8.50 @ 7.5; slaughter pigs

50 to 120 pounds medium to choice \$8 @ 8.75; feeder and stocker or pigs 70 to 120 pounds medium to choice \$5 @ 7.

Sheep and lambs steady. No receipts. Lambs 84 pounds down good to choice \$12 @ 13.75; do medium 82 pounds down \$10 @ 12; do cuts to common all weights \$8 @ 10; yearling weathers to choice \$8 @ 10; ewes 220 pounds down medium to choice \$7 @ 8; do medium to choice 120 to 150 pounds \$5 @ 7; do cuts to common all weights \$5 @ 6.

PORTLAND PRODUCE  
PORTLAND, Ore., Mar. 1 (AP)—Wholesale prices: Butter steady; Portland dairy exchange net whole-

sale prices: Cakes, extras 45c; standards 46c; prime firsts 47 1/2c; firsts 48c. Creamery prices: Prints 3c over cube standards.

Eggs steady. Fresh standard extras 26c; fresh standard firsts 24c; fresh medium extras 23c; fresh medium firsts 22c. Prices to retailers 2c over exchange prices. Association selling prices: Extras 26c; firsts 25c; mediums 24c; undersized 20c.

Birds to the farmer: Butterfat steady, 45c station, 47c firsts, 50 @ 55c f. o. b. Portland.

Poultry steady: Heavy hens 22 @ 24c; light 15 @ 20c; springs 20 @ 21c; broilers 23 @ 25c; pekin white ducks 20c; colored nominal; turkeys, alive, 25 @ 27c.

## "NO ACCOUNT" Often Results From No Savings Account

The man pictured above is like many other men. He may have earned extra good wages in his heyday, or he may have always made ordinary wages. In either event he had that "Only live once" idea and spent every cent he made. Now look at him. Earning power gone, ambition gone, friends gone—he has nothing left. No one envies his position. But we all do rightly wish that we may never find ourselves in such circumstances. Savings will save you—One Lone Dollar will start an account.

## Equitable Savings Bank