

PICTURES DONE BY RICHARDSON

Scenes of Union and Wallowa County Adorn the Mezzanine Walls

Upon visiting the Sacajawea Inn here, the grand opening of which will be held Saturday, one is attracted by the beautiful pictures of Union and Wallowa county scenes which are found on the mezzanine floor. These are photographs which were taken by Harley H. Richardson, and enlarged and tinted by him.

Included among the five pictures are four Wallowa county scenes, showing something of the Wallowa wonderland. One picture shows the Wallowa mountains in winter, another is a scene of Wallowa lake, a third a picture of the Ice Lake falls and the fourth is of the sunset on Wallowa lake. The fifth picture of the collection is a view of the Grande Ronde valley in winter, looking toward Mt. Pannier.

All of the pictures are beautifully tinted, and bring out the true beauty of Wallowa and Union counties. The frames for the pictures, which are of gold color, were ordered especially for the Sacajawea Inn. After they were received by Mr. Richardson he added the best bit of color, red and blue, which adds to the attractiveness of the picture itself. The frames are wide and heavy and harmonize perfectly with the general scheme of the hotel.

In addition to these pictures Mr. Richardson also tinted and framed the large picture of Sacajawea, in whose memory the hotel is named, which hangs in the hotel lobby. The tinting of the picture is beautiful, and has a large heavy frame, similar to the one used on the other pictures. The picture hangs

in a conspicuous position at the foot of the circling stair which leads to the mezzanine floor. A light at the top of the picture serves to keep the name Sacajawea before the public at all times.

SCOUTS GET TEPPE

PAWBUSSKA, Okla., (AP)—An Indian teppe which Oklahoma members of the American Legion took to Paris last year will be presented to a Boy Scout troop here. The teppe was decorated by Indian artists with good luck signs and was autographed by Marshal Foch and General Pershing.

La Grande Iron Works Furnishes Big Fire Escape

In common with many other local firms and individuals, the La Grande Iron Works views with pride the finished Sacajawea Inn. It is particularly interesting to this concern, of which Dave Fitzgerald is proprietor, inasmuch as a large amount of the iron work in the hotel was produced by him.

The thoroughly dependable and practicable fire escape, serving the upper six stories of the Inn, was made and installed by the La Grande Iron Works. The fire escape is actually seven stories in height and all brackets were forged from steel bars in the local foundry.

In addition to this piece of work, the foundry furnished the I beams and channels and punched and cut them. The aggregate weight of this material is figured at about 29 tons.

CHICAGO CIVIC OPERA TO PAY OREGON VISIT

PORTLAND, Ore., Feb. 16 (AP)—Oregon lovers of music are anticipating the visit here of the Chicago Civic Opera company, on March 22, when the first of a series of four operas will be presented at the public auditorium. "Aida" will be rendered the first night; "The Snow Maiden", the second night; "Resurrection" at the Saturday matinee; and "Il Trovatore" Saturday night. Rosa Raisa, Edith Mason, Claudia Muzio and Mary Garden are among the stars.

If a "V" is out in the center of a jump wheel, the flame will burn more evenly.

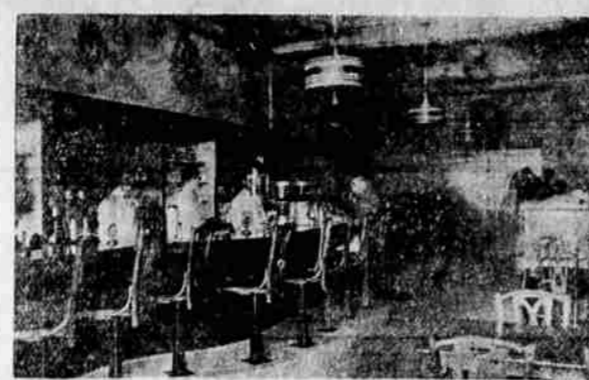
PROGRAM IS FEATURE OF AFTERNOON

(Continued from Page 1)

occupied by Tilton, who was then Ford salesman. A little later, because of the necessarily high rent charged for the building, it was made into several store rooms and the Black Cat, owned by Sam Harris, occupied the corner rooms.

Then about a year ago all plans for the hotel of which he had long dreamed were completed by Mr. Roesch, and he decided that the old building be torn down and in its place the new modern seven-story hotel be erected. The plans were drawn, the work started, and today, on the corner of Fir street and Adams avenue, stands a metropolitan hotel equal in every respect to the big hotels found in much larger cities than La Grande.

THE COFFEE SHOP



The coffee shop is one of the very charming features of the new Sacajawea, wall and lighting fixtures, and all decorations, being accomplished with Indian stencil work. The counter affords quick service either for meals or for fountain specialties and on the right are tables and booths to accommodate other guests. The kitchen, serving both the coffee shop and main dining room, is in the rear. —Photo by Hittler

gave in and as a result the hotel. The name was suggested by the has been given a distinctly different historical significance of the Inn, the entire decorating and finishing work of the Lewis and Clark expedition on the first great trip of

exploration into the Northwest. It was she who guided the weary travelers to a place of refuge after crossing the desert and mountains. To the people of Oregon and Washington Sacajawea occupies a prominent place in history and it is the purpose of the hotel to cater to the wants of travelers along the Old Oregon Trail just as Sacajawea ministered to the wants of the weary pilgrims on the early expedition.

In the city park in Portland stands a large statue of Sacajawea, pointing ever to the west, and in the hotel lobby here there hangs a beautifully tinted photograph of this statue. Beside the picture in a smaller, but similar frame hangs a short description: "This picture is taken from the statue in the city park at Portland, Ore. As you look upon it we suggest that you think of Sacajawea leading trail weary explorers with Lewis and Clark across the mountains and down the river to the sea, comforting them and administering to their wants, blazing a trail and assisting in making camp, ever pointing to the westward 'to the land of better things' to the lower reaches of the river where the gifts of meadow, forest and stream assured them of rest, shelter and food."

This hospitality is dedicated to her and to the other daring spirits that assisted in conquering the

entire building. Mr. Roesch furnished the material for the concrete. As many as 25 men were employed on the concrete work of the hotel at one time, although the average was about 15 men. The largest number of workmen employed was during the time when the floors of the building were being made. About ten men were at work when the concrete for the pilasters was being poured, these men all working under the supervision of Mr. Lilly.

MORE THAN 2,000 BARRELS CEMENT USED IN HOTEL

(Continued from Page 1)

with terraza and the mezzanine floor, the halls and guest rooms were heavily padded and carpeted. The cement stairs, which lead from the first floor to the top of the building, and are known as fire steps, were finished smoothly and painted.

2,000 Barrels of Cement

More than 2,000 barrels of cement was required for the concrete work in the building, and as much as 200 sacks of cement was mixed by the workmen in one day's pouring. During an eight-hour day around 50 yards of concrete was poured and during 24 hours 80 or 90 yards were poured. About 1400 yards of concrete were poured in

Long Experience

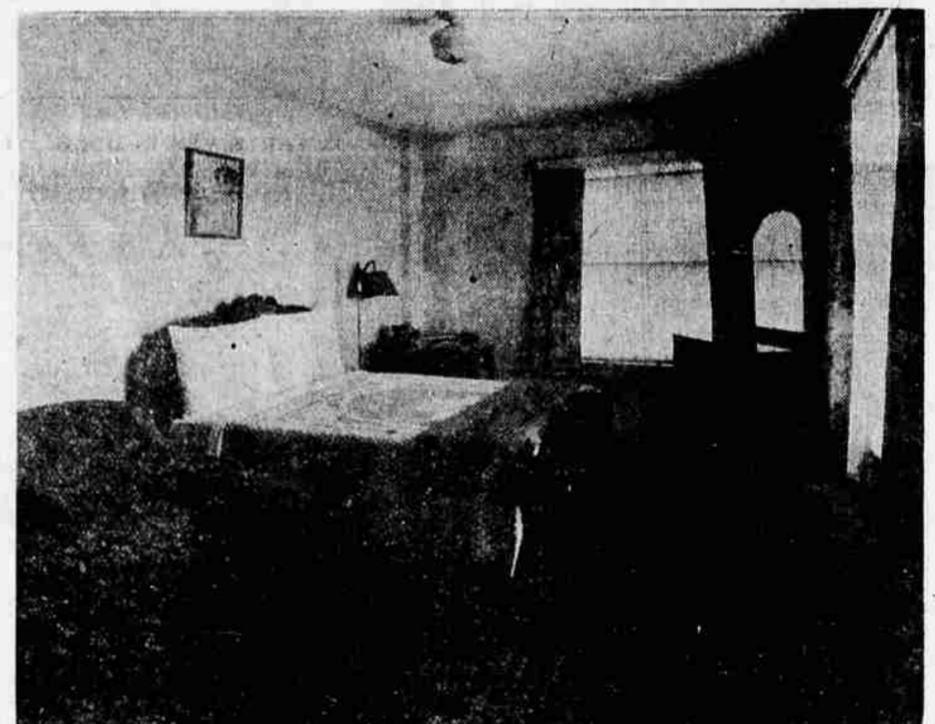
Mr. Lilly has made his home in La Grande for 22 years. His first experience in concrete work was in 1906 and for the past 17 years he has been a contractor in this line of work. During that time he has helped with the construction of many buildings in La Grande. Some of his first work was on the O. W. R. and N. round house here.

He did the cement work on many of the newer buildings here, including the New Foley building, which, until the completion of La Grande's two new hotels, was the highest building in the city, and many others.

Although his part in the construction of the Sacajawea Inn has been completed for some time he has watched the finishing of the building with much interest, and with a feeling of pride for having had a part in its making.

THERE ARE BEAUTIFUL INTERIORS IN THE SACAJAWEA INN

because high quality Paint and expert workmen laid a lasting and beautiful foundation!



Painting and Papering by Bugg Paint Co.

It is unusual to find a hotel where the guest rooms as well as the public rooms are painted and papered with the same quality and expert care expected of a beautiful private home. Here, however, is such a hotel—the walls and ceilings are painted, not kalsomined—or the walls are papered. The mahogany and gum woodwork is stained, rubbed, varnished. The interior woodwork is painted and full enameled. Bathrooms, closets, halls—every portion of the building received equal care—the best materials to be had, applied by careful and experienced workmen.

The result is seen in charming interiors—beautiful, inviting rooms. More than that, it means minimum depreciation, easily cleaned and economically kept surfaces for many years. It pays to buy good material and good workmanship.

We congratulate Mr. Roesch on the finished structure. We are proud to have had a part in such a magnificent hotel.

BUGG PAINT CO.

Painting and Papering Contractors Quality Paints and Supplies
Elm Street—West-Jacobsen Building

Electrical Fixtures —BY— ENGLISH CO. In The New SACAJAWEA INN

To provide lighting fixtures that would accomplish the double purpose of providing lighting with beauty and yet be in keeping with the charming Indian name and Indian decorating—that was the task of this company for the Sacajawea Inn.

The fixtures were designed and manufactured by us especially for this magnificent hotel. They are, we believe, in keeping with the unusual quality of the entire building and play a prominent and proper part in providing charm and convenience for Sacajawea guests.

We extend sincere congratulations to Mr. Roesch and the hotel organization on this fine structure.

ENGLISH CO.

Lighting Fixtures
475 Morrison St. Portland, Ore.