

NEW! NECKWEAR

Mogador, 1-28, Crepe, and Satin \$1.00 to \$2.50

Westenhaver & Gilbert
The Store for Men

GENERAL SLUMP IN EGG MARKET

Prices of Medium Firsts Down 3 Cents, Standard Firsts 2 Cents Lower

PORTLAND, Ore., Feb. 1 (AP)—Egg prices hit the lowest point since the dairy exchange session yesterday afternoon following reports of a 3-cent drop in Pacific coast egg prices in the New York market. All grades were affected, declines running as high as 2¢ per dozen. Standard extra firsts dropped 2 1/2¢ to 27 1/2¢, standard firsts dropped 2¢ to 27¢, medium extra 1¢ to 26¢, medium firsts 2¢ to 25¢, and second 3¢ to 24¢. Association prices likewise recorded. Receipts yesterday were heavy.

Butter quotations are unchanged today although butterfat bids are a cent lower with 100 lb top on Portland delivered fat.

Weakness pervades the country dressed meat division with supply fairly heavy and demand moderate. Pork and veal are not quite so low today on choice offerings but beef and lamb are down somewhat, the latter moving mostly around 21¢ to 22¢; beef prices cover a wide range, depending on quality of offerings. Veal is also slightly weaker.

Poultry Strong.
Poultry prices are steady to strong, with demand unusually good for this season, due to high prices on meat. Clean picked turkeys are especially in demand, with prices strong around \$2.00 to \$2.25; turkeys are likewise behaving well, although supply is comparatively small.

California canflower is plentiful and fairly steady around \$1.40 to \$1.55 a crate. Oregon and California cabbage is moving well around 5¢ per pound, with supply ample.

Oregon yellow flaxseed unions are quoted around 24 1/2¢ per pound in the trade with offers to growers ranging from \$2 to \$2.50 for U. S. No. 1 grade. Movement into the market is reported light.

MARKET NEWS OF THE DAY

Wheat	Open	High	Low	Close
March	129 1/2 @ 129 1/2	130 1/2	129 1/2	130 1/2 @ 130 1/2
May	150 @ 150 1/2	151 1/2	150	151 @ 151 1/2
July	127 1/2 @ 127 1/2	128 1/2	126 1/2	128 1/2 @ 128 1/2

Wheat Somewhat Higher At Close

CHICAGO, Feb. 1 (AP)—Opening unchanged to 1/4¢ off, corn last year started a little decline to 1/4¢ advance, and held near to the initial price. Oats were steady, provisions went lower.

Corn closed unsettled, 3/4 to 5/8 net higher, wheat showing 3/4 to 1 1/4¢ advance, oats 3/4 to 5/8 up, and provisions varying from 2¢ decline to an equal advance.

PORTLAND PRODUCE

PORTLAND, Ore., Feb. 1 (AP)—Wholesale prices: Butter steady, Portland Dairy Exchange net wholesale prices: cubes extra, 45¢; standards, 44¢; prime firsts, 43 1/2¢; firsts, 42¢. Creamery prices: Prints 2¢ over cube standards.

Eggs 1 to 5¢ lower. Fresh standard firsts 27¢; fresh medium extra 26¢; fresh medium firsts 25¢; ungraded 24¢; prices to retailers 5¢ over exchange prices. Associated selling prices: Extras 29 1/2¢; firsts 28¢; mediums 27¢, undersized 27¢.

Hay steady; buying prices: Eastern Oregon timothy \$20.50 to \$21; do valley \$18 to \$18.50; alfalfa \$18 to \$18.50; oat hay \$14.50 to \$15; straw \$9 per ton. Selling prices \$2 a ton more.

Hops to farmer: Butcher 1 to 2¢ lower; 80¢ station, 47¢ track, 49¢ 20¢ 1 to 3. Portland.

Poultry steady; heavy hens 25¢ to 24¢; light 13 to 25¢; spring 20 to 22¢; broilers 22 to 25¢; pullet white ducks 20¢; colored nominal; turkeys, alive, 25 to 27¢.

Onions steady; local \$1.25 to \$1.50 per cwt.

Potatoes steady, 75¢ to \$1.25 mark.

PORTLAND LIVESTOCK

PORTLAND, Ore., Feb. 1 (AP)—Cattle and calves steady; no receipts. Steers (1000 to 1200 lbs.), good \$11 to \$12; do medium (920 to 1100 lbs.), \$11 to \$12; do (800 lbs. up), medium \$10 to \$11; do (all weights), common, \$8.50 to \$10; heifers, good (1200 lbs. down), \$8.50 to \$10; do common to medium, \$7.50 to \$8.50; cows, good, \$8 to \$9; do common to medium, \$6 to \$8; do low cutters to culters, \$2.50 to \$6; bulls (yearlings excepted), \$6.75 to \$7.50; common and medium, \$4 to \$7.50; calves (500 lbs. down), medium to choice, \$4.50 to \$6.50; do culls to common \$4.50 to \$5.50; vealers (milk fed), choice, \$11.50 to \$12.50; do medium, \$10 to \$11.50; do culls to common, \$7.50 to \$9.

Heavy steady; receipts 800, direct. Heavy weight (250 to 300 lbs.), medium to choice, \$7.50 to \$8.75; medium weight (200 to 250 lbs.), medium to choice, \$6.25 to \$7.50; light weight (150 to 200 lbs.), medium to choice \$5 to \$6.25; light lights (120 to 150 lbs.), medium to choice, \$4.50 to \$5.25; packing hogs (rough and smooth) \$6 to \$7.50; slaughter pigs (50 to 120 lbs.), medium to choice \$4 to \$5; feeder and stocker pigs (75 to 120 lbs.), medium to choice, \$3 to \$4.75.

Sheep steady; no receipts. Lambs (44 lbs. down) good to choice, \$12 to \$12.50; do medium (52 lbs. down), \$10 to \$12; do culls to common (all weights), \$2 to \$4.

LA GRANDE WHOLESALE MARKETS

Poultry (live weight)
Springs—16 to 17¢ lb.
Heavy hens—14 to 15¢ lb.
Light hens—13¢ lb.
Stags—8¢ lb.

Flour.
Hard Federation (hard wheat)—\$7.40 bbl.
Soft wheat—\$7.40 bbl.

LA GRANDE RETAIL MARKETS

Butter, creamery—55 to \$1.05.
Eggs—24¢ a doz.
Cheese—3 to 4¢ a pound.
Honey, cream—25¢ lb.

Vegetables.
Potatoes—15 to 20¢ per cwt.
Romaine lettuce—25¢ lb.
Cabbage—4¢ bunch.
Wax onions—5 lbs. 25¢.
Lettuce—15¢ head.
Celery—15¢ bunch; bunches 25¢.
Pumpkin—4¢ lb.
Squash—6¢ lb.
Hot-house cucumbers—20¢ each.
Ranch carrots—10¢ bunch.
Ranch beets—10¢ bunch.
Turnips—15 to 20¢ bunch.
Yellow onions—4¢ lb.
Green onions—10¢ bunch.
Parsnips—5¢ lb.
Brussels sprouts—25¢ lb.
Krutabagas—5¢ lb.
Spinach—15¢ lb.
Artichokes—20¢ each.

Fruits.
Apples—Jonathan, Rome, Belleflower, \$1.50 box.
Delicious apples—\$1.25 to \$1.50 per box.

Bananas—15¢ lb.
Pineapples—2 for 25¢.
Lemons—5¢ doz.
Oranges—40 to 50¢ doz.
Florida grapefruit—Med. size, 2 for 25¢; large, 2 for 25¢.
Florida grapefruit—20¢ each.
Cranberries—25¢ lb.

Sugar.
Cane sugar—17 to 19¢.

Flour.
Soft wheat—\$7.40 bbl.
Hard Federation—\$7.40 bbl.

Poultry
Spring fries—24 to 25¢ lb.
Hens—23 to 24¢ lb.

Meats and Fish.
Beef bone—12 to 13¢ lb.
Chops and steaks—25 to 28¢ lb.
Salmon (strictly fresh)—15¢ lb.
Halibut—20¢ lb.

Gasoline
Gasoline, regular, retail, 16¢.

Railroad Report Causes A Slump In Stock Trade

NEW YORK, Feb. 1 (AP)—Reversal of selling pressure against the railroad shares presumably in reflection of the disappointing December railroad statement now being published, turned the course of prices temporarily today after a steady period of quiet strength. Trading, which had been dull on the rally, quickened perceptibly when large selling orders appeared in some of the popular issues. A 5-point break in Western Maryland common started the selling movement.

The closing was irregular. The list was bolstered up to some extent in the final hour when new buying began to appear in various specialties. West American, International Match preferred, Transue Williams, and International Business Machine made material advances, the last named reaching 120, a new peak. Diamond Match sold as high as 140 on odd lot purchases and People's Gas, after breaking to 128, rebounded to 144 1/2; another new maximum. Total sales approximated 2,400,000 shares.

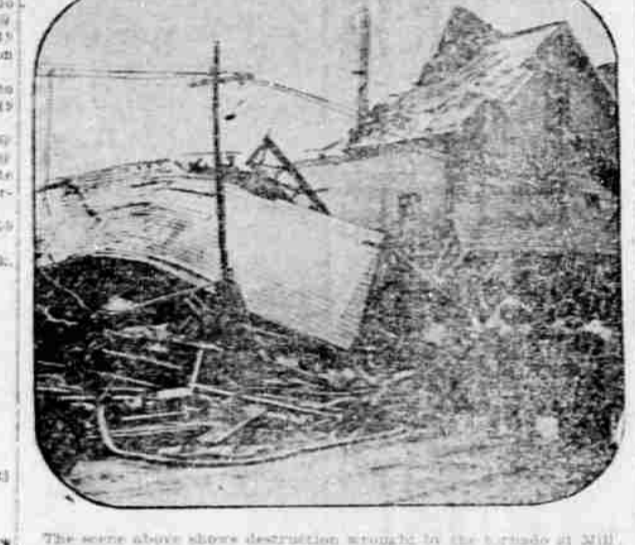
POULTRY
SAN FRANCISCO, Feb. 1 (AP)—U. S. Bureau Agricultural Economics—Layerns bone 2 1/2 to 3 lbs., 22 to 24¢; 2 1/2 lbs. and over, 24 to 25¢.

"FOX" AND HIS FATHER MEET IN JAIL



Edward Hickman, the captured "Fox" of the Marion Parker kidnaping and murder case, meets his father after a long separation in the Los Angeles jail where he is held during his trial starting Jan. 25. Thomas Hickman, the father, journeyed from 22 Paso, Tex., to assist his son in his fight for life.

RUIN A STRANGE TORNADO LEFT



The scene above shows destruction wrought by the tornado at Mill Creek and Columbia avenue, Cincinnati where one was killed and over a score injured. The storm, coming in midwinter and striking at a few places in Ohio and Kentucky, was one of the strongest tornadoses on record. Damages were nearly \$1,000,000.

Overbeck & Cooke Creditors Meet

PORTLAND, Ore., Feb. 1 (AP)—Investigation of the accounts of Overbeck & Cooke, brokerage house which closed yesterday, by State Corporation Commissioner Mark McMillan was asked today by District Attorney Stanley Myers.

Overbeck & Cooke, 1100 Broadway, Seattle, Wash., had a very narrow margin, but it was not until the firm's assets were liquidated that the extent of the loss was known.

Creditors estimated that the shortage of the firm would amount to between \$2,500,000 and \$2,600,000.

FINLAND'S SHIPPING

HELSINKI, Finland—The president of Finland has approved establishment of a government shipping fund which would provide about \$2,500,000 annually. The fund is to be financed by a 1% tax on the total value of Finnish shipping. The fund is to be used to subsidize shipping lines in a position to buy suitable ships.

CHICAGO LIVESTOCK

CHICAGO, Feb. 1 (AP)—U. S. Department of Agriculture—Hogs—24,000; slow general market 10 to 12¢ lower; bulk good and choice hogs 17 to 21¢ lb., \$3.25 to \$3.45; 22 to 25 lbs., \$3.75 to \$3.95; light

FIND IT HERE

Copy for this column must be in by 9 a. m.

INSURANCE AND BONDS
Everything But Life Insurance
U. S. INVESTMENT CO.
O. W. WARNOCK

CARD OF THANKS
We wish to thank our many friends and especially the K. P. Lodge for their loving kindness and sympathy expressed to us during our recent bereavement. Also for the beautiful floral offerings.
Mrs. Jessie G. Matott,
Cagie T. Matott,
Benjamin D. Matott.

Not How Old—but How Active
To have an active, limber, pain-free body, unhampered by advancing years, watch your kidney action. At 35, Mayor A. (Little) furnished, Barleton, Ohio, is at his office daily, healthy, hearty and active. "I find Foley's Kidney Pills just the right thing to regulate kidney elimination and keep me in fine condition." The medicinal qualities of Foley's Pills are valued so highly that they are guaranteed to give satisfaction. Constantly in use over twenty-five years. Try them. Sold everywhere.

Short Talks by thoughtful Mothers
A Wisconsin Mother says: "I find mothers very well informed on the subject of 'dope' in medicines. Few mothers now-a-days would buy a preparation that contained opium or chloroform. A glance at the package, before buying, tells her this. With Foley's Kidney and Urinary Pills, the name tells the truth. It is quickly effective for coughs, colds, croup and throat irritations. Pure as it is, and worth many times its price. Sold everywhere."

Our improved Enema Prescription
acts quickly and generally produces a cure in a few days. It costs \$1.00 a bottle. Sold only by Siverborn-Wright's Family Drug Store.

SOMETHING TO THINK ABOUT
If you have a nice vase which you would like made into a lamp, take it to Richardson, "The Art Man" at Richardson's Art and Gift Shop. He specializes in the making of unusual lamps.

Remotivating, peating, shoring noses, etc. Norton's Kiddy Shop, 10-14 1/2

Go Little Laver Teachers for Life
—the best laxative sold for women and children, and costs less money than all others. Sold only by Siverborn-Wright's Family Drug Store.

FARM LOANS: LOWEST RATES. SCHOOL FUNDS also available. H. E. DIXON, Foley Building, LA GRANDE, ORE.

WONDERFUL COLORED
Every color of the rainbow will be found in the new Langer which is new on the market and which is handled by Richardson's Art and Gift Shop. Colors will be blended to the most delicate shades for you. Easy to apply, wears like iron, has a beautiful gloss, is not expensive. The new ideal way of finishing over your furniture and floors.

Bank Teller Says Robbery a 'Frame'
CHICAGO, Feb. 1 (AP)—A 22-year-old teller has told police that the \$45,000 robbery of Industrial State bank Monday was a "frame-up" with three other men and two women involved. All but one of them were in custody of police today, and about \$12,000 of the loot recovered. James Wilson, the teller, told police that the man who kidnaped him and forced him to open the vault was Albert Rothbart, 17, a friend. The others he named were Alvin Vandendorp and Len Howard, who he said were the "brains" of the band; Joseph Riemann and Joseph Vassell, a chauffeur. Vassell still was sought by police.

GOODYEARS
The World's Greatest Tire ON THE PAYMENT PLAN
A little down—Balance as you ride.

W. H. BOHNENKAMP CO.

In Emergencies
Our reliable telephone meets your needs and often pays for years of service by quick action.

Home Independent Telephone Co.

Children's Hose
3/4 Length Sport Cuff
Closing Out at 25c and 49c

NORTON'S KIDDY SHOP

10 Years Ago Today

FREE
One Package of **KOTEX**
with every TWO packages you buy for **98c**
\$1.95 value for 98c.
This offer is limited.

L. & L. Drug Co.

IF YOU
are suffering from
"Sciatica" or "Lumbago"
come to our office and let us explain how
Chiropractic Adjustments
will relieve you of that suffering by correcting the cause. You will be surprised how quickly this can be done. We make no charge for talking over your health problems with you and you will be under no obligations.

Ask us for free literature.

Dr. F. L. Tribe
Phone Main 124 (Palmer Graduate) New Foley Bldg.
Office Hours: 9 to 5; 7 to 9

Battle Creek Sanitarium Health Foods
Pattison Bros. Grocery

SAVITA
For Soups, Gravies, Noodle Sauces, etc. A concentrated vital extract with potassium, iron, stimulating Vitamin B.

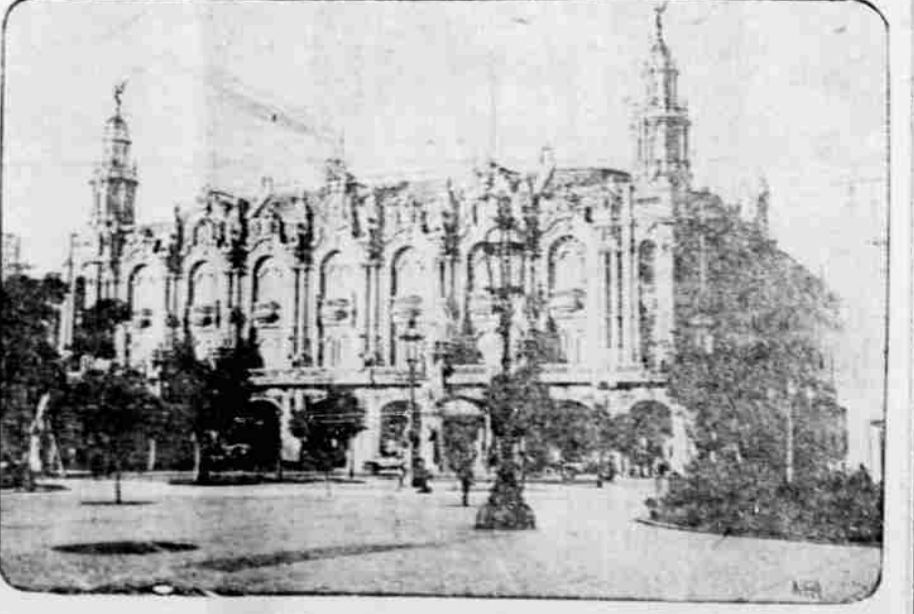
PARAMELS
A concentrated form of Mineral Oil—An efficient solvent for constipation. May be taken with or without meals.

VITA WHEAT
An appetizing breakfast dish. May be prepared in 30 minutes. Made from the whole of wheat. It has a rich attractive flavor.

FOOD FERRIN
Iron for rich, red blood is found in Food Ferrin. A laboratory-made, vitamin-rich source of iron, of granular or liquid form. It is iron in a new form, the Health.

Call at our Store for the Book on Healthful Living—it will give you many facts that you have probably never heard of before.

WHERE THE PAN-AMERICAN CONFEREES MET



In this magnificent building, called one of the ten most beautiful structures in the world, the Pan-American conference was held. It is the National Theater, fronting on Havana's Central Park.