

EGG PRICES DOWN; BEEF IS EASIER

Country Dressed Meat in Demand—Butter Quotations Unchanged

PORTLAND, Ore., Jan. 25 (AP)—Egg prices were lower on the daily exchange today with declines of a cent quoted on standard extra and medium flocks while standard firsts were 7 cents lower. Medium extras and peewees were unchanged. Prices are quoted today as follows: Standard extra 32c; standard firsts 32c; medium extra 32c; medium firsts 31c; and undersized 28c. Association selling prices took similar drops.

Butter quotations were unchanged at the meeting yesterday except for cube extras, which declined 1/2 to 4 1/2c. Butterfat prices held firm and steady. Slightly better demand was noticeable in the country dressed meat division early today with hogs showing a slightly stronger undertone. Choice lights hogs moved today between 12 and 13c, about a half cent above yesterday's quotations.

Beef was easier in reflection of the lower prices paid yesterday at the North Portland stockyards. Veal and lamb were quoted steady early today with demand and movement moderate.

Firmness prevailed in the poultry division with demand for heavy hens slightly improved. Choice dressed turkeys were having well also, but prices held steady with supplies ample to meet requirements.

Except for small receipts of green vegetables and a little Roseburg broccoli, nothing of special interest was noteworthy on the fruit and produce markets early today.

Roseburg broccoli was bringing \$1.75 for No. 1 and \$1.50 for No. 2. Eastern demand for cauliflower has tended to strengthen the market a little.

Potatoes and onions were steady but movement was light.

MARKET NEWS OF THE DAY

Table with columns: CHICAGO GRAIN, Wheat, March, May, July, Open, High, Low, Close.

PORTLAND WHEAT—Wheat—BBB hard white, \$1.40; hard white durum, \$1.37; soft white, \$1.27; western white, \$1.27; hard winter, \$1.22 1/2; northern spring, \$1.24; western red, \$1.22.

CHICAGO CASH—CHICAGO, Jan. 25 (AP)—Wheat—No. 2 mixed, \$1.29 1/2; Corn (new)—No. 4 mixed, 85 1/2c; No. 3 yellow, 84 1/2c; No. 2 white, 89c; No. 6 white, 85 1/2c.

PORTLAND PRODUCE—PORTLAND, Ore., Jan. 25 (AP)—Wholesale prices: Butter, cube extra 4c lower, Portland wholesale dairy exchange net wholesale prices: Calves, extra 45c; standard 44c; prime firsts 44c; firsts 43c. Creamery prices: Prints 3c over cube standard.

Medford Supports Odell-Crane Road—MEDFORD, Ore., Jan. 25 (AP)—The directors of the Medford chamber of commerce last night voted to support the Oregon public service commission in its plea to the interstate commerce commission for the construction of the cross-state railroad from Odell to Crane.

Rancher Drowns Near Gold Beach—GOLD BEACH, Ore., Jan. 25 (AP)—Shipping into Flores creek while fishing, Harvey Anderson, 25, rancher of Northern Curry county, was drowned yesterday. Ernest Cox, his companion, was unable to rescue Anderson.

NOTICE OF BOND SALE—Sealed bids will be received by the undersigned until the hour of 7:30 o'clock P. M. on Wednesday, the 1st day of February, 1928, and immediately thereafter opened by the City Commission of the City of La Grande at the City Building in said city for the purchase of forty-five thousand (\$45,000) dollars City of La Grande Second Street Pipe Line Bonds and bonds to be dated February 1, 1928, bearing interest at the rate of five per cent (5%) per annum, in denominations of five hundred (\$500) dollars each, maturing serially in numerical order at the rate of two thousand (\$2,000) dollars on the first day of February in each of the years 1929 to 1938, inclusive, and at the rate of twenty-five hundred (\$2,500) dollars on the first day of February in each of the years 1939 to 1948, inclusive.

SHORT TALKS BY THOUGHTFUL MOTHERS—A New England Mother says: "Our children are very susceptible to coughs and colds. Being located some distance from town, we felt the need of a good, dependable cough medicine, and when our druggist recommended Foley's Honey and Tar Compound as the best in his experience, we accepted his judgment gladly. For coughs, croup, whooping-cough, troublesome night coughs, bronchial coughs, we have tried it time and again, always with complete satisfaction." Sold everywhere.—Adv.

CHICAGO LIVESTOCK—CHICAGO, Jan. 25 (AP)—U. S. Department of Agriculture—Hogs—23,000; fairly active to shippers; traders and small packers, steady to shade lower; top \$8.20; all weights, 160 to 210 lbs., upwards to \$8.25; bulk desirable hogs, 170 to 210 lbs., \$8.20 to \$8.25; 210 to 300 lbs., \$8.10 to \$8.20.

PORTLAND LIVESTOCK—PORTLAND, Ore., Jan. 25 (AP)—Cattle and calves. Receipts 20. Steers (100 to 1300 lbs.), good \$11.50 to 12.75; do medium (950 to 1100 lbs.), \$11.75 to 12.75; do (800 lbs. up), medium \$10.25 to 11.75; do (all weights), common, \$9.00 to 10.25; heifers, good (850 lbs. down), \$10.25 to 11.25; do common to medium, \$8.25 to 10.25; cows, good, \$8.75 to 9.50; do common to medium, \$6.75 to 8.75; do but cutters to cullers, \$4.50 to 6.75; bulls (yearlings excepted), best, good, \$7.50 to 8; do common and medium, \$6.75 to 7.50; calves (500 lbs. down), medium to choice, \$9.00 to 11; do culls to choice, \$7.00 to 9; vealers (milk fed), common, \$12 to 13; do medium, \$10.50 to 12; do culls to common, \$8.00 to 10.

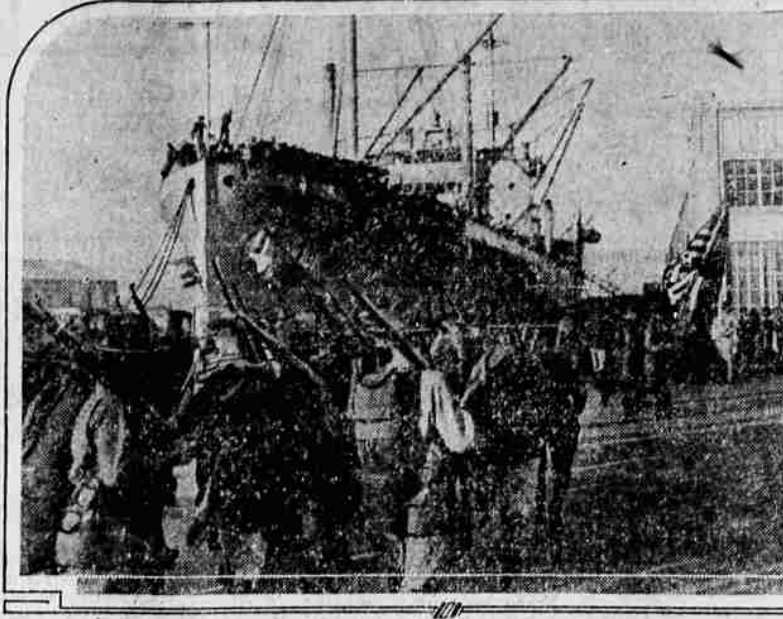
LA GRANDE WHOLESALE MARKETS—Poultry (live weight) Springs—16 1/2c lb. Heavy hens—14 1/2c lb. Light hens—10c lb. Stags—8c lb. Flour, Hard Federation (hard wheat) \$7.60 bbl. Soft wheat—\$7.40 bbl.

LA GRANDE RETAIL MARKETS—Butter, creamery—55c lb. Eggs—19c doz. Cheese—35c lb. Honey, comb—25c lb. Vegetables, Potatoes—1 1/2c lb. \$1.25 per cwt. Rutabagas—10c lb. Cabbage—4c lb. Wax onions—6 lbs. 25c. Lettuce—15c head. Celery—15c bunch; heads 25c. Pumpkins—1c lb. Squash—6c lb. Hothouse cucumbers—25c each. Bunch carrots—10c bunch. Bunch beets—10c bunch. Turnips—15c 25c bunch. Yellow onions—6c lb. Green onions—10c bunch. Parsnips—3c lb. Brussels sprouts—25c lb. Rutabagas—10c lb. Spinach—15c lb. Artichokes—20c each.

Fruits, Apples—Jonathan, Rome, Bellefleur, \$1.50 bus. Delicious apples—\$1.50 to 2.50 per box. Bananas—15c lb. Persimmons—2 for 25c. Lemons—20c doz. Oranges—40c 50c doz. Florida grapefruit—Med. size, 2 for 25c; large, 2 for 25c. Florida grapefruit—20c each. Cranberries—20c lb. Sugar, Cane sugar—\$7.00.

Meats and Fish, Beef—12 1/2c lb. Chops and steaks—25c 30c lb. Salmon (strictly fresh)—35c lb. Halibut—35c lb. Gasoline, regular, re-tails, 7c.

Going to Take Situation Well in Hand.



The picture shows part of a detachment of 500 marines embarking at San Diego, Calif., recently on the United States ammunition ship Nitro to leave for Nicaragua.

NEW YORK, Jan. 25 (AP)—The stock market experienced a sharp reaction today as a result of the heavy liquidation inspired by the unexpected increase in the Chicago federal reserve bank rediscount rate. Prices broke 2 to 7 points at the opening, rallied moderately, sagged again before midday, and turned upward in the early afternoon when heavy buying developed in the public utilities, several of which advanced to new high records. Trading started off at a terrific pace, but slowed up on the rally.

The market, having advanced rather steadily for five consecutive days, was in a vulnerable position for selling attacks. Gold dust sold down 2 points to 88 and then rallied to a new high record at 95 1/2. Federal Light and Traction, Consolidated Gas and La Crosse Gas also established new high records. The last named soaring nearly 15 points above last night's closing quotations.

Renewal of call money at 3 1/2 per cent tended to keep liquidation without bounds, although the subsequent cutting of about \$20,000,000 in bank loans aroused misgivings in some speculative quarters.

The closing was weak. Prices began to tumble again when the call money rate was nudged up to 4 per cent after marked gains had been made by several public utilities, and such specialties as National Biscuit, Lowey, Ross, Ingersoll and American Bank Note, U. S. Steel, American Smelting, Montgomery Ward, Greene Canons and General Motors were in the van of the downward turn in the final hour. Total sales approximated 2,850,000 shares.

LA GRANDE WHOLESALE MARKETS—Poultry (live weight) Springs—16 1/2c lb. Heavy hens—14 1/2c lb. Light hens—10c lb. Stags—8c lb. Flour, Hard Federation (hard wheat) \$7.60 bbl. Soft wheat—\$7.40 bbl.

LA GRANDE RETAIL MARKETS—Butter, creamery—55c lb. Eggs—19c doz. Cheese—35c lb. Honey, comb—25c lb. Vegetables, Potatoes—1 1/2c lb. \$1.25 per cwt. Rutabagas—10c lb. Cabbage—4c lb. Wax onions—6 lbs. 25c. Lettuce—15c head. Celery—15c bunch; heads 25c. Pumpkins—1c lb. Squash—6c lb. Hothouse cucumbers—25c each. Bunch carrots—10c bunch. Bunch beets—10c bunch. Turnips—15c 25c bunch. Yellow onions—6c lb. Green onions—10c bunch. Parsnips—3c lb. Brussels sprouts—25c lb. Rutabagas—10c lb. Spinach—15c lb. Artichokes—20c each.

Fruits, Apples—Jonathan, Rome, Bellefleur, \$1.50 bus. Delicious apples—\$1.50 to 2.50 per box. Bananas—15c lb. Persimmons—2 for 25c. Lemons—20c doz. Oranges—40c 50c doz. Florida grapefruit—Med. size, 2 for 25c; large, 2 for 25c. Florida grapefruit—20c each. Cranberries—20c lb. Sugar, Cane sugar—\$7.00.

Meats and Fish, Beef—12 1/2c lb. Chops and steaks—25c 30c lb. Salmon (strictly fresh)—35c lb. Halibut—35c lb. Gasoline, regular, re-tails, 7c.

CHICAGO LIVESTOCK—CHICAGO, Jan. 25 (AP)—U. S. Department of Agriculture—Hogs—23,000; fairly active to shippers; traders and small packers, steady to shade lower; top \$8.20; all weights, 160 to 210 lbs., upwards to \$8.25; bulk desirable hogs, 170 to 210 lbs., \$8.20 to \$8.25; 210 to 300 lbs., \$8.10 to \$8.20.

PORTLAND LIVESTOCK—PORTLAND, Ore., Jan. 25 (AP)—Cattle and calves. Receipts 20. Steers (100 to 1300 lbs.), good \$11.50 to 12.75; do medium (950 to 1100 lbs.), \$11.75 to 12.75; do (800 lbs. up), medium \$10.25 to 11.75; do (all weights), common, \$9.00 to 10.25; heifers, good (850 lbs. down), \$10.25 to 11.25; do common to medium, \$8.25 to 10.25; cows, good, \$8.75 to 9.50; do common to medium, \$6.75 to 8.75; do but cutters to cullers, \$4.50 to 6.75; bulls (yearlings excepted), best, good, \$7.50 to 8; do common and medium, \$6.75 to 7.50; calves (500 lbs. down), medium to choice, \$9.00 to 11; do culls to choice, \$7.00 to 9; vealers (milk fed), common, \$12 to 13; do medium, \$10.50 to 12; do culls to common, \$8.00 to 10.

LA GRANDE WHOLESALE MARKETS—Poultry (live weight) Springs—16 1/2c lb. Heavy hens—14 1/2c lb. Light hens—10c lb. Stags—8c lb. Flour, Hard Federation (hard wheat) \$7.60 bbl. Soft wheat—\$7.40 bbl.

LA GRANDE RETAIL MARKETS—Butter, creamery—55c lb. Eggs—19c doz. Cheese—35c lb. Honey, comb—25c lb. Vegetables, Potatoes—1 1/2c lb. \$1.25 per cwt. Rutabagas—10c lb. Cabbage—4c lb. Wax onions—6 lbs. 25c. Lettuce—15c head. Celery—15c bunch; heads 25c. Pumpkins—1c lb. Squash—6c lb. Hothouse cucumbers—25c each. Bunch carrots—10c bunch. Bunch beets—10c bunch. Turnips—15c 25c bunch. Yellow onions—6c lb. Green onions—10c bunch. Parsnips—3c lb. Brussels sprouts—25c lb. Rutabagas—10c lb. Spinach—15c lb. Artichokes—20c each.

Fruits, Apples—Jonathan, Rome, Bellefleur, \$1.50 bus. Delicious apples—\$1.50 to 2.50 per box. Bananas—15c lb. Persimmons—2 for 25c. Lemons—20c doz. Oranges—40c 50c doz. Florida grapefruit—Med. size, 2 for 25c; large, 2 for 25c. Florida grapefruit—20c each. Cranberries—20c lb. Sugar, Cane sugar—\$7.00.

Meats and Fish, Beef—12 1/2c lb. Chops and steaks—25c 30c lb. Salmon (strictly fresh)—35c lb. Halibut—35c lb. Gasoline, regular, re-tails, 7c.

CHICAGO LIVESTOCK—CHICAGO, Jan. 25 (AP)—U. S. Department of Agriculture—Hogs—23,000; fairly active to shippers; traders and small packers, steady to shade lower; top \$8.20; all weights, 160 to 210 lbs., upwards to \$8.25; bulk desirable hogs, 170 to 210 lbs., \$8.20 to \$8.25; 210 to 300 lbs., \$8.10 to \$8.20.

PORTLAND LIVESTOCK—PORTLAND, Ore., Jan. 25 (AP)—Cattle and calves. Receipts 20. Steers (100 to 1300 lbs.), good \$11.50 to 12.75; do medium (950 to 1100 lbs.), \$11.75 to 12.75; do (800 lbs. up), medium \$10.25 to 11.75; do (all weights), common, \$9.00 to 10.25; heifers, good (850 lbs. down), \$10.25 to 11.25; do common to medium, \$8.25 to 10.25; cows, good, \$8.75 to 9.50; do common to medium, \$6.75 to 8.75; do but cutters to cullers, \$4.50 to 6.75; bulls (yearlings excepted), best, good, \$7.50 to 8; do common and medium, \$6.75 to 7.50; calves (500 lbs. down), medium to choice, \$9.00 to 11; do culls to choice, \$7.00 to 9; vealers (milk fed), common, \$12 to 13; do medium, \$10.50 to 12; do culls to common, \$8.00 to 10.

LA GRANDE WHOLESALE MARKETS—Poultry (live weight) Springs—16 1/2c lb. Heavy hens—14 1/2c lb. Light hens—10c lb. Stags—8c lb. Flour, Hard Federation (hard wheat) \$7.60 bbl. Soft wheat—\$7.40 bbl.

LA GRANDE RETAIL MARKETS—Butter, creamery—55c lb. Eggs—19c doz. Cheese—35c lb. Honey, comb—25c lb. Vegetables, Potatoes—1 1/2c lb. \$1.25 per cwt. Rutabagas—10c lb. Cabbage—4c lb. Wax onions—6 lbs. 25c. Lettuce—15c head. Celery—15c bunch; heads 25c. Pumpkins—1c lb. Squash—6c lb. Hothouse cucumbers—25c each. Bunch carrots—10c bunch. Bunch beets—10c bunch. Turnips—15c 25c bunch. Yellow onions—6c lb. Green onions—10c bunch. Parsnips—3c lb. Brussels sprouts—25c lb. Rutabagas—10c lb. Spinach—15c lb. Artichokes—20c each.

Fruits, Apples—Jonathan, Rome, Bellefleur, \$1.50 bus. Delicious apples—\$1.50 to 2.50 per box. Bananas—15c lb. Persimmons—2 for 25c. Lemons—20c doz. Oranges—40c 50c doz. Florida grapefruit—Med. size, 2 for 25c; large, 2 for 25c. Florida grapefruit—20c each. Cranberries—20c lb. Sugar, Cane sugar—\$7.00.

Meats and Fish, Beef—12 1/2c lb. Chops and steaks—25c 30c lb. Salmon (strictly fresh)—35c lb. Halibut—35c lb. Gasoline, regular, re-tails, 7c.

CHICAGO LIVESTOCK—CHICAGO, Jan. 25 (AP)—U. S. Department of Agriculture—Hogs—23,000; fairly active to shippers; traders and small packers, steady to shade lower; top \$8.20; all weights, 160 to 210 lbs., upwards to \$8.25; bulk desirable hogs, 170 to 210 lbs., \$8.20 to \$8.25; 210 to 300 lbs., \$8.10 to \$8.20.

PORTLAND LIVESTOCK—PORTLAND, Ore., Jan. 25 (AP)—Cattle and calves. Receipts 20. Steers (100 to 1300 lbs.), good \$11.50 to 12.75; do medium (950 to 1100 lbs.), \$11.75 to 12.75; do (800 lbs. up), medium \$10.25 to 11.75; do (all weights), common, \$9.00 to 10.25; heifers, good (850 lbs. down), \$10.25 to 11.25; do common to medium, \$8.25 to 10.25; cows, good, \$8.75 to 9.50; do common to medium, \$6.75 to 8.75; do but cutters to cullers, \$4.50 to 6.75; bulls (yearlings excepted), best, good, \$7.50 to 8; do common and medium, \$6.75 to 7.50; calves (500 lbs. down), medium to choice, \$9.00 to 11; do culls to choice, \$7.00 to 9; vealers (milk fed), common, \$12 to 13; do medium, \$10.50 to 12; do culls to common, \$8.00 to 10.

LA GRANDE WHOLESALE MARKETS—Poultry (live weight) Springs—16 1/2c lb. Heavy hens—14 1/2c lb. Light hens—10c lb. Stags—8c lb. Flour, Hard Federation (hard wheat) \$7.60 bbl. Soft wheat—\$7.40 bbl.

LA GRANDE RETAIL MARKETS—Butter, creamery—55c lb. Eggs—19c doz. Cheese—35c lb. Honey, comb—25c lb. Vegetables, Potatoes—1 1/2c lb. \$1.25 per cwt. Rutabagas—10c lb. Cabbage—4c lb. Wax onions—6 lbs. 25c. Lettuce—15c head. Celery—15c bunch; heads 25c. Pumpkins—1c lb. Squash—6c lb. Hothouse cucumbers—25c each. Bunch carrots—10c bunch. Bunch beets—10c bunch. Turnips—15c 25c bunch. Yellow onions—6c lb. Green onions—10c bunch. Parsnips—3c lb. Brussels sprouts—25c lb. Rutabagas—10c lb. Spinach—15c lb. Artichokes—20c each.

FIND IT HERE. Copy for this column must be in by 9 a. m. INSURANCE AND BONDS Everything But Life Insurance U. S. INVESTMENT CO. O. W. WARNOCK 1-12-17

SOMETHING NEW. Something much better than Jesso has been discovered and is being used for Art Decorating. It is suitable for finishing of furniture, plaques, frames, and in all places where Jesso was used and many more. It costs less and is easier to work with. Get this new art product at Richardson's Art and Gift Shop. 1-25-27

POSTORIA GLASS. If you were fortunate enough to have received a start in Postoria Table Service, at the Xmas time, now is the time to begin to fill it in with the other pieces. Goblets, high and low sherberts, cocktails, plates and other odd pieces in every pattern, will be found at Richardson's Art and Gift Shop. 1-25-27

FARM LOANS—LOWEST RATES SCHOOL FUNDS also available. H. E. DIXON, Foley Building LA GRANDE, ORE. Luncheon at the Eagles hall—for all friends and their families at 7 o'clock Thursday evening, Jan. 25. Please bring your receipts. 1-25-17

Get a good DICTIONARY. And read your newspaper intelligently. 75c to \$7.50. P. S.—Specify FUSK and WAGNALLS. L. & L. Drug Co.

1/2 PRICE SALE ON CHILDREN'S 3/4 HOSE. NORTON'S KIDDY SHOP

Goodyears The World's Greatest Tire ON THE PAYMENT PLAN A little down—Balance as you ride. W. H. BOHNENKANP CO.

You Are The Judge. We have done our best—Golden Crust Bread is just as good a loaf of bread as we know how to make. You are the judge of how well we have done. It is significant that people in increasing numbers are asking for Golden Crust Bread. We are proud of the fact that we keep our customers. Once people try Golden Crust, they always ask for it—convincing proof of real quality. Your grocer receives it regularly and is glad to serve you, because Golden Crust is a bread worthy to represent him and his service. Ask him. Gwilliams Electric Bakery La Grande, Oregon Opposite Observer on Adams.

The Most Competent JUDGE of the value of the science of Chiropractic is the person who has taken CHIROPRACTIC ADJUSTMENTS and has been relieved of aches and pains. There are many in this community. Talk to them. Ask them to tell you just what the Chiropractor does. Find out what benefits they have received and you will be surprised. Then let us show you the cause of your trouble. The chances are that this investigation will save you much pain and suffering now and in years to come. Dr. F. L. Tribe (Palmer Graduate) New Foley Bldg. Phone Main 126 Office Hours: 9 to 5, 7 to 8

BATTLE CREEK SANITARIUM HEALTH FOODS for Everybody. ASK ME ANOTHER Q. What is LACTO DEXTRIN? A. LACTO DEXTRIN is a palatable food that drives out of the body the bad germs that cause headaches, bad breath, constipation, auto-intoxication, and many other troubles. Used at the Battle Creek Sanitarium. Q. How is it used? A. As a beverage. Ask for special literature explaining how LACTO DEXTRIN keeps one youthful. Q. Where can I get it? AT PATTISON BROS. GROCERY Phone MAIN 80 ASK ME ANOTHER Q. What is PSYLLA? A. PSYLLA (pronounced silla) is a little seed that grows wild in certain tropical countries, yet its efficiency in stimulating normal activity of the intestine is in some ways superior to that of any food yet discovered. Q. How do you use it? A. When immersed in water or fruit juice this little seed becomes a gelatinous mass which supplies both bulk and lubrication, the two necessities to complete elimination. Q. Where can I get PSYLLA?

PRESENTED WITH ITS FIRST BROOD OF AIRPLANES, the giant U. S. S. Saratoga is made ready for its maiden voyage. The largest crane in the world is shown lowering one of the flying ships to the deck of the airplane carrier.