



Hard to Fit? Try

OSHKOSH B'GOSH

We'll guarantee to please you

THESE overalls were made to be comfortable. Lots of room in the seat. Overshoes and all your foot slips through the leg without any pulling and tugging. Suspenders too wide to "rope" and chafe you. Ample seat room.

Heaviest cloth with lots of extra wear. Jumbo pockets of strong material. Re-inforced at the strain points. Just what you've been looking for. Try a pair.

New Low Price \$1.95

Westenhaver & Gilbert

The Store For Men

Stock Prices Recovering On Street Today

NEW YORK, Jan. 24 (AP)—Strong buying of high priced shares on the stock market today carried several scores of issues to the highest prices since 1925 or longer. Advances ranged from \$5 to \$20 a share, the latter gain being made by Adams Express, which sold \$100 above its low price of the year.

NEW YORK, Jan. 24 (AP)—The recovery in stock prices continued today with the leadership of the market switching from the pool specialties to the high grade investment industrial and rails. There has been a marked absence of any concerted "bear" selling in recent sessions. In conservative quarters, talk was heard of another increase in brokers' loans this week. Express shares continued their sensational advance, Adams Express secured 24 points to 289, a new high record, and nearly 100 points above the low level of the month. American Railways Express climbed 15 1/2 points, and American Express 6 1/2. The floating supply of all three issues is relatively small, and little buying power is needed to bring about sharp advances.

Gold Dust, Rossia Insurance, Green Camanua Copper, Warren Bros., International Silver, and Eastman Kodak all sold 4 to 5 points above yesterday's final quotations.

The closing was strong. Well known industrial were galvanized into greater strength in the final hour, by the rise in other sections. American Express rose 11 points, American Machine and Foundry 6 1/2, Columbia Carbon and Air Reduction 5, and American Can, General Railway Signal and American Tobacco B 3/4 to 5. Total sales approximated 2,700,000 shares.

PORTLAND LIVESTOCK

PORTLAND, Ore., Jan. 24 (AP)—Cattle and calves: Steers and spot stock mostly 15 to 25c lower; spot 50c down; steers (1000 to 1500 lbs.), good, \$11.50 to 12.75; do medium (950 to 1100 lbs.), \$11.75 to 12.75; do (800 lbs. up), medium, \$10.25 to 11.75; do (all weights), common, \$9.50 to 10.25; fallers, good (550 lbs. down), \$10.25 to 11.25; do medium to medium, \$8.50 to 10.25; cows, good, \$8.75 to 9.50; do medium to medium, \$6.75 to 8.75; do cutters to cutters, \$4.50 to 6.75; bulls (yearlings excepted), beef, good, \$7.50 to 8.75; do common and medium, \$6.75 to 7.50; calves (500 lbs. down), medium to choice, \$9.00 to 11; do cuts to common, \$7.50; vealers (milk fed), choice, \$12.00 to 15; do medium, \$10.50 to 12; do cuts to common, \$8.00 to 10.50.

Hogs steady. Receipts 525, all direct. Heavy weight (250 to 300 lbs.) medium to choice, \$7.75 to 8.75; medium weight (200 to 250 lbs.), medium to choice, \$8.25 to 9.25; light weight (150 to 200 lbs.), medium to choice, \$9.00 to 9.25; light (120 to 150 lbs.), medium to choice, \$8.50 to 9.25; packing hogs (rough and smooth), \$6.75 to 7.50; slaughter pigs (50 to 150 lbs.), medium to choice, \$8.50; feeder and stocker pigs (75 to 150 lbs.), medium to choice, \$8.50; do common, \$7.50; do cuts to common, \$6.50 to 7.50. Sheep and lambs steady. Lambs (84 lbs. down), good to choice \$11.50 to 13; do medium (92 lbs. down), \$10.50 to 11.50; do cuts to common (all weights), \$7.50 to 9.00.

POULTRY

SAN FRANCISCO, Jan. 24 (AP)—U. S. Bureau Agricultural Economics—Broilers: Leghorns, 1 to 1 1/2 lbs., 42 to 45c; 1 to 1 1/4 lbs., 39 to 40c; fryers: Leghorn, 2 lbs., 39 to 40c; 2 1/4 to 2 1/2 lbs., 36 to 38c; colored, 2 1/4 to 2 1/2 lbs., 35 to 36c; young roosters all pullets: colored, 2 1/4 to 4 lbs., 29 to 30c; stags, showing spurs, 2 1/2 to 2 3/4 lbs., 28 to 29c; dressed, 4 1/2 to 4 3/4 lbs., 24 to 25c; 2 1/2 to 3 lbs., 20 to 22c; 2 1/2 lbs. and over, 22 to 23c; large colored hens: ranch and eastern, 2 1/2 to 3 lbs., 25c; Ducks: young, 2 1/2 to 3 lbs., 27 to 28c; 3 to 3 1/2 lbs., 25 to 26c; 3 1/2 to 4 lbs., 23 to 24c; 4 to 4 1/2 lbs., 21 to 22c; 4 1/2 to 5 lbs., 19 to 20c; 5 to 5 1/2 lbs., 17 to 18c; 5 1/2 to 6 lbs., 15 to 16c; 6 to 6 1/2 lbs., 13 to 14c; 6 1/2 to 7 lbs., 11 to 12c; 7 to 7 1/2 lbs., 9 to 10c; 7 1/2 to 8 lbs., 7 to 8c; 8 to 8 1/2 lbs., 5 to 6c; 8 1/2 to 9 lbs., 3 to 4c; 9 to 9 1/2 lbs., 1 to 2c; 9 1/2 to 10 lbs., 0 to 1c.

MARKET NEWS OF THE DAY

CHICAGO GRAIN			
	Open	High	Low
Wheat	130 1/2	131 1/2	130 1/2
March	130 1/2	131 1/2	130 1/2
May	130 1/2	131 1/2	130 1/2
July	127 1/2	128 1/2	127 1/2

PORTLAND WHEAT
PORTLAND, Ore., Jan. 24 (AP)—Wheat—BBB hard white, \$1.42 1/2; hard white bluestem, hard, \$1.32; federation, \$1.27 1/2; western white, \$1.27 1/2; hard winter, \$1.23; northern spring, \$1.24 1/2; western red, \$1.22 1/2. Oats—No. 2 white feed and No. 2 gray, \$1.10. Today's car receipts—Wheat, 120; barley, 1; flour, 5; corn, 2; oats, 9; hay, 4.

CHICAGO CASH
CHICAGO, Jan. 24 (AP)—Wheat—No. 1 northern spring, \$1.30. Corn (new)—No. 3 mixed, \$6.90; No. 3 yellow, \$6.90; No. 2 (old)—No. 6 mixed, \$7.10; No. 2 yellow, \$7.10. Oats—No. 2 white, \$5.50; No. 2 yellow, \$5.50. Rye—No. 2, \$1.10; No. 1, \$1.11. Timothy seed—\$3.10 to 3.50. Clover seed—\$21.75 to 23.50. Lard—\$11.92. Rib—\$11.25. Bellies—\$12.75.

CHICAGO LIVESTOCK
CHICAGO, Jan. 24 (AP)—U. S. Department of Agriculture—Hogs—46,000; early market mostly 5 to 10c lower than Monday's average; spots of more; big packers bidding 10 to 20c lower; early top \$8.50; strictly choice hogs, 160 to 210 lbs., at the top of the market. Bulk good and choice 170 to 210 lb. averages \$8.15 to 8.50. Cattle—3,000; very slow, dull trade on fat steers and cow stock; cowboys light yearlings, most short fat steers of value to sell at \$13 to 14.50; best early \$16.50; stockers and feeders scarce; firm; largely \$10.50 to 12; mostly light feeders up to \$12.50; light vealers to big packers \$13 to 14; mostly steady; shippers and small killers competing for kinds ranging 140 lbs. upward, such descriptions 50c higher at \$15 to 16.

Sheep—15,000; fat lambs active; strong to 15c higher than Monday; early bulk good to choice 30 to 35 lb. lambs, \$12.75 to 14; asking around \$14.15 on choice handly weights; nothing done on heavies; choice 100 lb. yearlings 25c higher at \$11.75; sheep firm; bulk fat ewes \$7 to 7.25; choice light weights about; feeding lambs strong; bulk good 65 to 72 lb. feeders \$12.50 to 12.75.

NEW YORK FRUIT

NEW YORK, Jan. 24 (AP)—Evaporated apples easy; choice 15 to 16c; fancy 18 to 19c; other fruits steady.

BUTTERFAT

SAN FRANCISCO, Jan. 24 (AP)—Butterfat C. O. B. San Francisco, 5c.

LA GRANDE WHOLESALE MARKETS

Poultry (live weight)
Springs—15 to 16c lb.
Heavy hens—14 to 16c lb.
Light hens—10c lb.
Stags—8c lb.
Flour
Hard Federation (hard wheat)—\$7.50 bbl.
Soft wheat—\$7.40 bbl.

LA GRANDE RETAIL MARKETS

Butter, creamery—56¢ @ \$1.05.
Eggs—10¢ doz.
Cheese—2 1/2 to 4¢ a pound
Honey, clover—2 1/2c lb.
Vegetables
Potatoes—1 1/2 to 1 3/4¢ per cwt.
Hothouse tomatoes—40c lb.
Parsley—5c bunch.
Cabbage—4c lb.
Wax onions—5 lb. 25c.
Lettuce—15¢ head.
Celery—15¢ bunch; hearts 25c.
Pumpkins—4c lb.
Squash—6c lb.
Hothouse cucumbers—20c each.
Bunch carrots—10c bunch.
Bunch beets—10c bunch.
Turnips—15 to 20¢ bunch.
Yellow onions—5c lb.
Green onions—10c bunch.
Parsnips—5c lb.
Brussels sprouts—25c lb.
Rutabagas—5c lb.
Spinach—15c lb.
Artichokes—20c each.

FRUITS

Apples—Jonathan, Rome, Belleflowers, \$1.50 box.
Delicious apples—\$1.50 to 2.50 per box.
Bananas—15c lb.
Persimmons—2 for 25c.
Lemons—5c doz.
Oranges—40¢ doz.
Florida grapefruit—Med. size, 2 for 25c; large, 2 for 35c.
Florida grapefruit—20c each.
Cranberries—25c lb.

SUGAR

Cane sugar—\$7.00.
Flour
Soft wheat—\$4.40 bbl.
Hard Federation—\$5.40 bbl.

POULTRY

Spring fries—28.50c lb.
Hens—25 to 26c lb.

MEATS AND FISH

Beef bull—12 1/2 to 15c.
Chops and steaks—25 to 30c lb.
Salmon (strictly fresh)—35c lb.
Halibut—35c lb.

GASOLINE

Gasoline (retail, retail) 5c.

FIND IT HERE

Copy for this column must be in by 9 a. m.

INSURANCE AND BONDS
Everything But Life Insurance
E. S. INVESTMENT CO.
O. W. WARNOCK
1-15-17

COOKED FOOD SALE
Given by St. Peter's Guild Wednesday, at the Crescent Meat Mkt.
1-23-21

We pay cash for second-hand school books in good condition. Silverthorn-Wright's Family Drug Store.
1-4-17

YOUR DECORATING
When you have a piece of furniture to do over, or a breakfast set to paint, ask Richardson, "The Art Man" about the best way to do it. The finish which will wear the best, and is the easiest to put on. Special tints and colors mixed to match your decorating scheme. Take your finishing problems to Richardson's Art and Gift Shop.
1-23-21

FARM LOANS: LOWEST RATES.
SCHOOL FUNDS also available.
H. E. DIXON, Foley Building, LA GRANDE, ORE.

YOUR OWN PICTURES
Pictures of your friends and loved ones are far more attractive when tinted by Richardson "The Art Man". He specializes in enlarging, tinting and framing. Take your picture work to Richardson's Art and Gift Shop.
1-23-21

Store seeds in a cool place if you order them early. They are kept in better condition than in a warm room.

A NATION-WIDE INSTITUTION
J.C. PENNEY CO.
"where savings are greatest"
108 Depot St., La Grande, Oregon

Early News of Spring Frocks
Leads You to Our Modish Arrivals

The excitement of "something new" is abroad in our dress department—because frocks, just a step ahead in style, are being unpacked every day.

Vivid High Shades
Express New Delights

After a winter of black satin and shades of tan and brown, the spring picture of high shades is particularly pleasing. Flat crepe and satin crepes combine.

\$9.90---\$14.75

RETIREES FROM ARMY
WASHINGTON, Jan. 24 (AP)—Retirement from the army of Major General Kenzie W. Walker as chief of finance at his own request, has been approved by President Coolidge, effective April 22. Major General Walker has been in service for more than 29 years.

To take his place as chief of the finance bureau, the president has nominated Col. Frederick L. Carmichael, who will have the rank of major general.



How Much Farther Ahead Will You Be Next January?

Not just in dollars saved but in accomplishing your purpose? How do you hope to improve your finances during the year?

Do you look forward to buying a home, to owning a good bond, to starting in business for yourself?

The chief pleasure and satisfaction gained by saving is not merely in the accumulation of a greater balance all the time but in saving for a purpose—completing a given plan.

Perhaps you have your "getting ahead" program mapped out for this year. If you have, we'll be glad to assist any way we can to see that it is accomplished. Or if you have a certain purpose in mind and wish suggestions on how it can best be realized, our friendly and experienced counsel is always at your service.

La Grande National Bank
Member Federal Reserve --- Resources Over 2 Million
Fortieth Year of Friendly Service

New Land Laws Bring Prosperity Into Lithuania

NEW YORK, Jan. 24 (AP)—Former big land owners and the peasant holders of small farms alike seem to be prospering in Lithuania since the vast estates were cut up by the government. No one in Lithuania now is permitted to hold more than 2,500 acres. The rest was taken over by the state, compensation being given owners for the land appropriated.

Lithuania is a nation of farmers, 80 per cent of its population being "small holders," most of whom own less than 50 acres of land. With the days of serfdom gone, all are eager to improve their condition.

Every farmer's ambition is to possess an American tractor, but because of limited resources, several generally have to combine to buy one machine.

They have become regular radio fans. Registered listeners in number 20,000. The state monopoly charges such listeners a nominal fee of 10 cents a month.

Former big land owning families carry on with notable success on the smaller estates left to them. Baron von Budberg, whose ancestor was foreign minister of Catherine the Great, is known as the "Butter Baron." Count Zuboff, another ex-Lithuanian nobleman, breeds famous cattle on his estate near Shavil, and the aristocratic Polish family of Karp are renowned for their prize pigs.

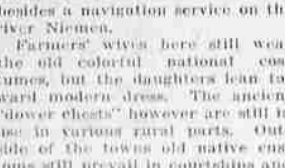
A curious appearance amid all these former Russian nobles is made by the ancient Portuguese family of Faria e Castro, whose ancestor settled near Kavro centuries ago after romantic adventures. Not only has the family not changed its name, but operated with conspicuous success. Four milk dairies, and breweries besides a navigation service on the river Niemen.

Farmers' wives here still wear the old colorful national costumes, but the daughters lean toward modern dress. The ancient "dover chests" however are still in use in various rural parts. Outside of the towns old native customs still prevail in courtdships and at weddings.

Lesson No. 11

Question: How does emulsified cod-liver oil increase the efficiency of milk as a protection against rickets?

Answer: Milk is deficient in rickets-preventing vitamin. A little emulsified cod-liver oil added to or taken with milk makes it a more perfect vitamin-food. Give it as



SCOTT'S EMULSION

10 Years Ago Today

Senator Chamberlain fights for his war bills in the senate.

Public opinion determines the worth of anything.

The people of La Grande have chosen

PENSLAR
Horehound
Honey and Tar

With cod liver extract, menthol and eucalyptus—for their cough remedy.

75c a bottle (guaranteed)

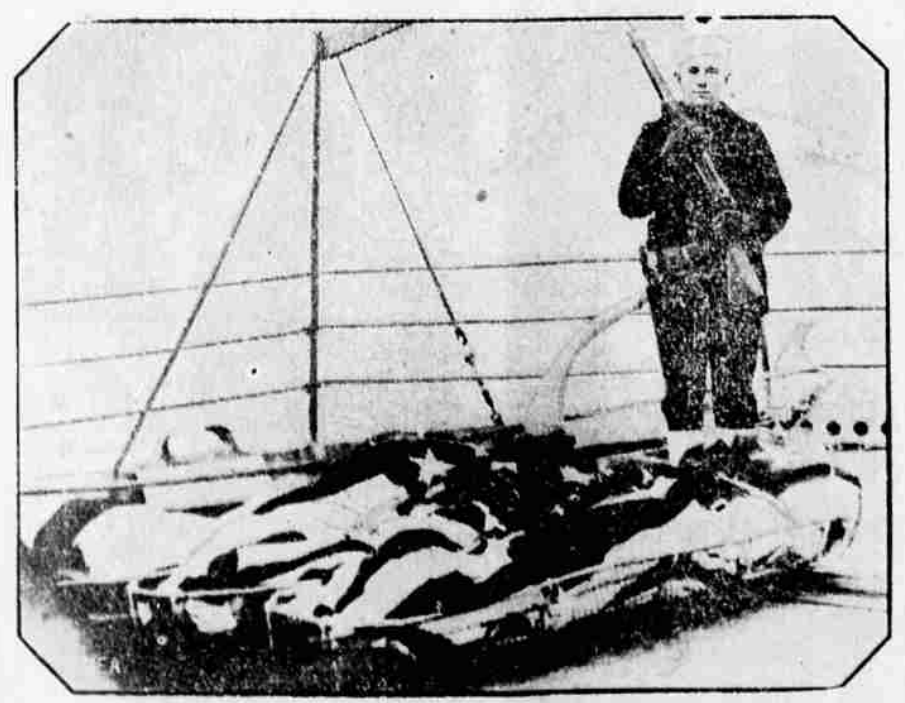
L. & L. Drug Co.

Goodyears
The World's Greatest Tire
ON THE PAYMENT PLAN
A little down—Balance as you ride.
W. H. BOHNENKANP CO.

Wheat Unsettled As Market Closes

CHICAGO, Jan. 24 (AP)—Startling at 1/2 to 1/2c decline, wheat later rose in some cases to above yesterday's finish. Corn opened 1/2c off to 3/4c up and subsequently advanced all around. Oats likewise tended to harden. Provisions, too, were stronger.

STANDING GUARD OVER THE S-4 DEAD



The first three bodies to be taken from the sunken hull of the submarine S-4 are shown above as they were, flag-draped, on the deck of the U. S. S. Bushnell at Provincetown, Mass. A sailor stands guard over his lost comrades.