

CHRYSLER PRICE CUTS ANNOUNCED

Savings of from \$50 to \$100 on "52" and "62" Models Made Possible

Substantial savings in the price of the new Chrysler "52" and "62" models announced by Chrysler officials.

The new prices make various body styles of these two cars from \$50 to \$100 lower than heretofore.

The Great New "62" includes features also not found in any other car at either its new or previous prices.

and the further advancement of the company's widely known principle of standardized quality, are given by the company officials as factors contributing to make possible these greater values to the public.

During the year 1927 the company advanced to third place among all manufacturers in the sales records of the National Automobile chamber of commerce.

Company officials point out that 1927 sales of both these cars were the highest yet attained. They point out that by passing on to the public the even greater value these new prices make possible, that a still greater number of motor car owners can now take advantage of the abilities offered in these two cars.

POINTER ON PURCHASING

Car-buying now is beginning in earnest. There will be an endless number of demonstrations of the power of various cars on hills. The prospective customer might do well to remember that it isn't how fast the car will go on some grades that proves its full power, but how evenly it will perform at a relatively low speed.

NICE LITTLE JOB

Dorothy—The gangster man sent that second-hand car you ordered and I tried it out.
William—How many people does it carry comfortably?
Dorothy—None—Film Fun.

Total of 1,800 Grade Crossings Are Eliminated

According to information recently received by the Oregon State Motor association, nearly 1,800 grade crossings have been eliminated since federal aid work was launched in 1916. This has been accomplished through two methods—by separating the grades and by changing the highway routes.

Nearly two-thirds of these crossings were avoided by rerouting the roads. Of the 414 crossings eliminated during 1926 on federal aid projects, 262 of them were by relocation of highways. A number of states have taken steps to eliminate grade crossings. In making plans for payment building many communities are including funds for the construction of underpasses and overpasses.

There are 222,755 crossings used by motorists in the United States. Of this number, only 27,141 have protection in any form. Highway authorities point out that if the yearly accident toll is to be reduced still more attention must be paid to grade crossing elimination.

ADVICE TO WOMEN MOTORISTS

Automobiles and husbands are alike: take care of them and you'll not have to get a new one soon. —Motor Land.

HELD IN MURDER



Dr. Charles McMillan of Los Angeles is held in connection with the death of Mrs. Amelia Appleby, wealthy widow of the late John Appleby, millionaire farm implement inventor. Dr. McMillan was Mrs. Appleby's business representative. The woman's body was found tied up in a sack near San Fernando, Cal.

Speed Desire Is Reason For New Type Car Motor

Dean Edward Ottoman, of the Chicago Technical college, recently opined that "The people are wanting more speed and the manufacturer should make the car as safe as possible." This statement was in reply to a series of questions propounded by Dr. W. H. White, prominent engineer while making his recent automotive survey.

As the mechanism of the automobile is perfected it is obvious that greater distances can be traversed which in turn is the basic reason for the public demand for speed. There are two principal means of relieving the danger that high speed is heir to. A low center of gravity is a great step inasmuch as the greatest danger at high speed lies in the possibility of turning over. Another great step is fortification against damage in case of collision or sudden impact.

Dodge Brothers have embodied these two guards against injury in their new Victory Six motor. The entire body is made of two walls of sheet steel—battleship type—with an air space between. These walls are joined together at various points with lock joints giving the body much greater strength by creating a second defense against accident.

For the first time in motor construction the body and the chassis are united into one solid unit in this car. The floor is built into the chassis frame and the seats are attached directly to this. The old insecure framework, including the body sills, is thus eliminated. In addition there is a saving of two feet inches in the height of the car and a resulting lower center of gravity without sacrifice of road clearance. It would be practically impossible to overturn this car even on the sharpest corners.

Model Twenty Tractor Shown By Local Firm

The new model Twenty "Caterpillar" tractor is now in full production, according to the Bunting Tractor company, local dealers for "Caterpillar" tractors. The "Caterpillar" Twenty is new in rating, new in price and new in design in that it embodies the latest development of many years of "Caterpillar" experience.

The Twenty motor is of the 4-cylinder, 4-cycle, water-cooled valve-in-head type, having a 4-inch bore and a 5 1/2-inch stroke. It is provided with a full oil pressure lubrication system and oil filter. The cooling system has a gear-driven fan and water pump and thermostat control.

The new tractor has been designed with appearance and the comfort of the operator in mind. The Bunting Tractor company is pleased to announce that one of these new tractors is on the sales-room floor in La Grande and welcome visits from all.

Black Marble & Lime company of Enterprise, Oregon has taken delivery of two 3-yard trailers mounted on 15-ton Athey Truss wheels, sold by Bunting Tractor company of this city. As soon as work at the quarry are completed, this equipment will be put to work hauling material to the Black Marble & Lime company's plant near Enterprise. A "Caterpillar" Sixty Tractor will be employed to pull the wagons.

According to Bunting Tractor company, dealer for "Caterpillar" Tractors and Athey wagons in this area, considerable interest is being shown toward this operation, inasmuch as it represents the first installation of big capacity track laying trailers on a heavy haul job in this immediate vicinity.

This type of equipment has substantially reduced hauling costs on installations made by Bunting Tractor company in Idaho and in numerous instances throughout the United States, according to local officials.

Gov. Patterson Will Motor To California Soon

PORTLAND, Ore., Jan. 21 (AP)—The governor of Oregon said to the governor of California—this phrase may not get the vote of that referring to the governors of the Carolinas, but it will express what Governor L. L. Patterson expects to say to Governor C. C. Young, a month hence.

Governor Patterson plans a motor trip to Sacramento, accompanied by a caravan of Oregon motorists representing many cities and when he gets there he will tell Governor Young how much Oregon appreciates having California folks spend their vacations in Oregon and thank California for efforts to improve road conditions between the two states. The caravan expects to start Feb. 29 and reach Sacramento the afternoon of the third day.

Henry Ford and Rockefeller. The richest men we know— One makes a little tigger, And the other makes it go.

POWER

Power is the mover of goods—the very source of transportation, the essential permanent servant of commerce.

In the new line of Graham Brothers Trucks and Commercial Cars power is the perfect servant—sure, smooth, irresistible, elastic in its capabilities, instantly responsive to your bidding.

Prices

- 2-Ton (6-cylinder) \$1595
- 2-Ton Dump (6-cylinder) 1645
- 1 1/2-Ton 1245
- 1-Ton G-Boy 895
- 3/4-Ton Commercial 670 (Chassis prices f. o. b. Detroit)
- 1/2-Ton Panel Delivery Car (Complete) \$770 (f. o. b. Detroit)

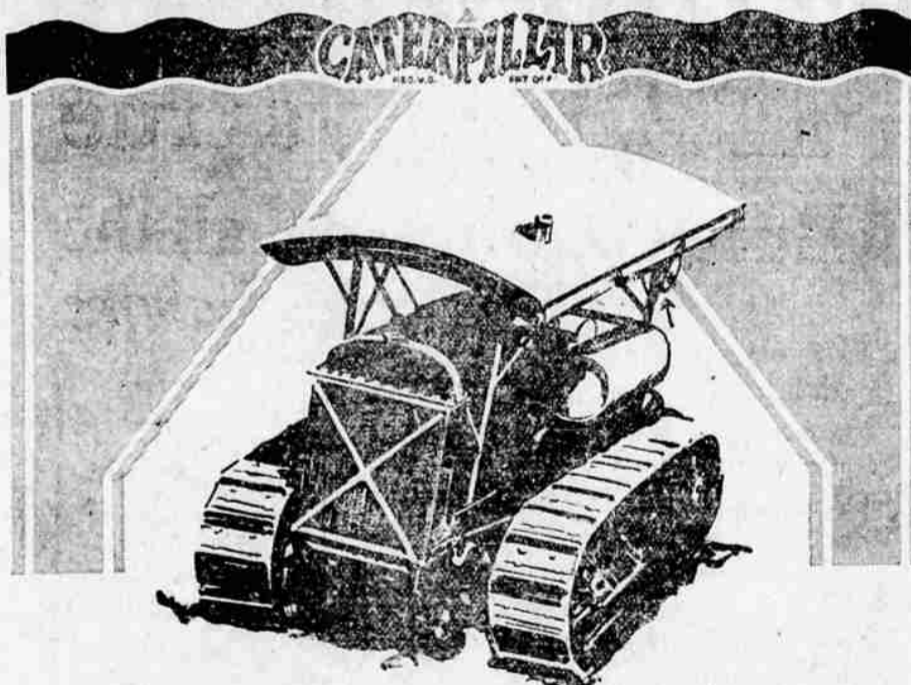
Four and Six cylinder engines Bodies to fit your business Prices extremely low.

L. C. SMITH

5th and Depot St. La Grande

GRAHAM BROTHERS TRUCKS

LOOK OVER OUR WANT ADS FOR BARGAINS



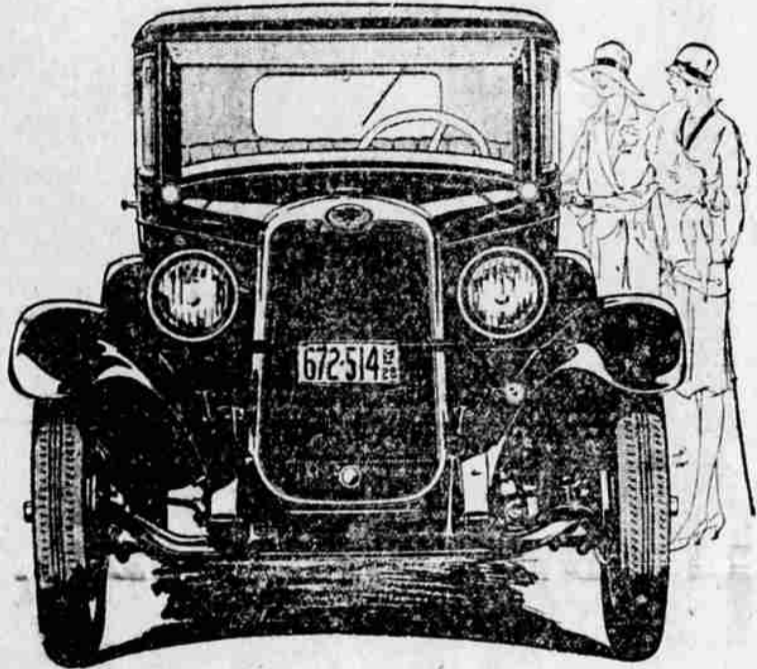
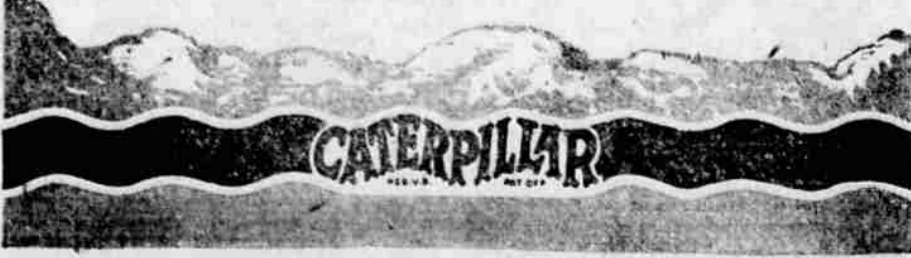
IT'S HERE!

The NEW CATERPILLAR TWENTY

It just arrived, and is on display on our salesroom floor—a new member of the famous "CATERPILLAR" family. New in drawbar rating—new in design—a tractor worthy of the "CATERPILLAR" name. We would enjoy explaining the features of this new "CATERPILLAR" Tractor—and we solicit a visit from you.

BUNTING TRACTOR COMPANY

Boise, Idaho Pocatello, Idaho



Again-

Chevrolet Electrifies America with a Great New Motor Car

Prices Reduced! The Coach \$585

- The Roadster \$495
- The Touring \$495
- The Coupe \$595
- The Four-Door Sedan \$675
- The Sport Cabriolet \$665
- The Imperial Landau \$715
- Light Delivery \$375 (Chassis Only)
- Utility Truck \$495 (Chassis Only)

All prices f. o. b. Flint, Mich.

A new automobile so sensational as to electrify the nation!

With marvelous new Fisher bodies offering all the distinction, beauty and luxury for which Fisher craftsmen are famous! With performance that is a revelation to owners of even higher priced cars! With 127-inch wheelbase—four inches longer than before! With four-wheel brakes—and many additional mechanical achievements!

And . . . prices that demonstrate again Chevrolet's ability to provide the utmost in modern motoring luxury at the lowest possible cost!

The engine of this great new car is of the improved valve-in-head design. With alloy "invar strut" pistons . . . specially designed hydro-laminated camshaft gears . . . mushroom type valve tappets . . . and a complete new steel motor enclosure—it provides a type of motor operation so thrilling that it must be experienced to be appreciated!

Coupled with this thrilling acceleration and speed is a

type of riding and driving comfort almost unbelievable in a low-priced car. Four inches longer than the previous Chevrolet chassis . . . swung low to the road . . . and with four semi-elliptic shock absorber springs—the Bigger and Better Chevrolet holds the road with a surety that is simply amazing, and rides in perfect comfort at high speeds over the roughest stretches of highway.

And never before was a low-priced car so easy to drive—for the worm and gear steering mechanism is fitted with ball bearings throughout . . . even at the front axle knuckles.

All these spectacular new mechanical advancements are, of course, in addition to the host of notable features that Chevrolet has previously pioneered in the low-price field.

Come in and see this latest and greatest General Motors achievement! Learn why it is everywhere the subject of enthusiastic comment—why everywhere it is hailed as the world's most luxurious low-priced automobile.



Blue Mountain Garage

M. A. HARRISON, Mgr.

Opposite Postoffice

QUALITY AT LOW COST