

LaGrande Evening Observer

(Incorporated)
An Independent Newspaper
FRANK B. APPELBY Editor and Publisher
HARVEY F. MATTHEWS Business Manager

Published evenings, except Sunday, at 1418 Adams Avenue La Grande, Oregon. The Observer-Star published every Friday. Entered at the Postoffice at La Grande, Oregon, as Second Class Mail Matter under act of March 2, 1879.

OFFICIAL PAPER OF UNION COUNTY AND THE CITY OF LA GRANDE

MEMBER ASSOCIATED PRESS

The Associated Press is exclusively entitled to use for publication of all news dispatches credited to it or not otherwise credited it published herein. All rights of republication of special dispatches in this paper, and also the local news herein also are reserved.

SUBSCRIPTION RATES

By Carrier	
Daily, per month in advance	75c
Daily, six months in advance	\$4.50
Daily, single copy	5c
By Mail	
Daily, per month in advance	50c
Daily, per six months in advance	\$2.50
Daily, per year in advance	\$5.00
Weekly Observer-Star, per year	\$2.00

ADVERTISING RATES

Display, foreign, per column inch	42c
Display, local, per column inch	40c
Time contract prices on application.	



THE LORD—Sing unto the Lord with the harp, with the harp, and the voice of a psalm. With trumpets and sound of cornet make a joyful noise before the Lord, the King. Psalm 98:5, 6.

Business forecast for 1928: Generally fair and warmer.

ABE MARTIN



I guess quite a few of the ardent admirers of Coolidge, who've been hustling that he be dented, had hoped to ride into office with him. "With father payin' ten times as much for liquor as he formerly did, and the 'spallin' 'rest of keepin' another beautiful, it's a lucky youngster that even got an orange this Christmas," says a bulletin issued by the township trustees.

Dancer Dies In Paris—One Time Friend Of Queen

PARIS, Jan. 2 (AP)—Lee Fuller, dancer, who became a center of controversy during Queen Marie's tour of the United States in 1924, died today of pneumonia. Miss Fuller died early this morning at the Plaza Athenee hotel after a 19 days illness. Pneumonia was preceded by auto-intoxication. Half a dozen physicians worked in relays night and day administering oxygen but her life ebbed out as the new year came in. Miss Fuller was active until stricken at her school of dancing. She moved to the hotel several months ago from her own villa at Neuilly where Queen Marie often visited her. The remains will be cremated on Wednesday without religious ceremony in accordance with her request. Hundreds of friends called at the hotel today and passed through the room where the dancer lay with a bunch of violets on her breast.

Born Near Chicago

The dancer who was born on a farm near Chicago, came to Paris after triumphs in America. She began her stage career in the academy of music, Chicago, in child parts and later became a singer. Her "sensitive" dance movements, Miss Fuller met Queen Marie in Paris a generation ago. She and the queen had been the closest of friends for many years, the queen even discussing family problems with the dancer. It was understood here that Queen Marie arranged for Fuller to America through Miss Fuller. Following discord aboard Queen Marie's special train after Miss Fuller joined the royal party at Spokane, Wash., the dancer left the train at Denver and this was said to have marked the cessation of visible evidence of their friendship. The two women have not seen each other since then. It was also reported that Miss Fuller tried to mediate with Queen Marie in behalf of Mrs. Magda Lupescu with whom former Crown Prince Carol fled from Rumania, renouncing his rights to the throne. Whether either of both of these affairs caused the estrangement between them it was often remarked that the old warmth which marked the friendship disappeared soon afterward although there was no open breach.

National Guard To Seek Girl's Killer

WASHINGTON, Penn., Jan. 2 (AP)—Pennsylvania national guardmen of Company H, 110th Infantry, were expected today to join in the hunt for the slayer of Thelma Young, 17, whose half nude body, with a crushed skull, was found in a field near her home here last Thursday night. Captain Raymond Goodridge, N. G. P., appealed to the guardmen to assist state troopers and county and city police in their search for the murderer. The victim's brother, Clyde Young, is a member of the company. Fred Drew, 15, negro, arrested as a suspect, has established an alibi, authorities said today. They added, however, that Drew and his friend John Johnson, 21, negro, would be held on other charges, including robbery.

American Actress Weds Into Nobility

LONDON, Jan. 2 (AP)—Elythe Baker, American movie actress, was married today to Gerald B. Kington, son of the international banker, Baron Louis Kington. The ceremony was held at the Prince's Row, Westminster, register's office. It was witnessed by a few friends of the couple, including the earl and countess of Port Arthur. The couple left immediately for Monte Carlo for their honeymoon. Miss Baker and Gerald Kington were met at London bridge, parties at which much of their courtship occurred. It has been stated that the American actress will give up her professional career as a pianist and dancer.

South Shivers In Frigid Wave; Atlanta 2 Above

ATLANTA, Ga., Jan. 2 (AP)—Stung by the coldest frosts this winter yet has cast, the south today continued its greetings for the new year through chattering teeth, since whining gales had chased the mercury overnight to new low seasonal levels and in most cases left it there. The temperatures ranged from four degrees below zero at Asheville, N. C., and three below at Louisville, Ky., to 22 degrees above zero at Jacksonville, Fla., and New Orleans, 25 at Tampa and 13 at Miami. Atlanta had two above and Birmingham six. The weather bureau predicted but slight changes in the next 48 hours.

The temperatures ranged from four degrees below zero at Asheville, N. C., and three below at Louisville, Ky., to 22 degrees above zero at Jacksonville, Fla., and New Orleans, 25 at Tampa and 13 at Miami. Atlanta had two above and Birmingham six. The weather bureau predicted but slight changes in the next 48 hours.

Heavy Snow, Cold Grips East States

NEW YORK, Jan. 2 (AP)—Heavy snows and cold snap which threatened the lowest temperature of the season today had northern Pennsylvania and New York state in its frigid grasp. In Erie, Pa., from four to five feet of snow paralyzed traffic. In Wilkesbarre one death was attributed to the cold weather, a resident being found dead on the porch of his home.

PROSPERITY WILL REMAIN SAY LEADERS

(Continued from Page One) The agricultural situation is strong. Excessive stocks have been reduced in some important lines. Climate conditions were favorable to crop growth, production was equal to or above normal, the quality was good and net returns to growers have exceeded last year despite lower prices in some cases. This means increased purchasing power in the agricultural community. On the whole, there appears every reason to expect good business in the Pacific-Southwest territory during the forepart of 1928, at levels closely approximating those of last year.

LIVESTOCK

By J. H. Mercer (Chairman, National Live Stock And Meat Board)

TOPEKA, Kas., (AP)—The year 1927 has proved fairly satisfactory to American live stock producers. Margins between production costs and selling prices for cattle and sheep have permitted reasonable profits. Average prices for cattle were approximately 20 percent higher, while sheep prices held a fair but somewhat lower level than in 1926. The swine industry did not fare so well, since market values of hogs slumped from \$3.50 to \$1.50 per hundred during the year with one important justification. With market receipts for 1927 much below the average of the years since the war and the hog population in this country approximately 10,000,000 less than before the war, buying powers succeeded in forcing prices down to such an extent that producers at best have been able only to break even in their operations.

Taken as a whole, however, the past year has been more profitable from the live stock producer's viewpoint than any year since the deflation period following the war. From present indications the immediate future appears even more promising and we believe during the next few years the live stock industry will come into its own, and producers will enjoy a period of general satisfactory prices.

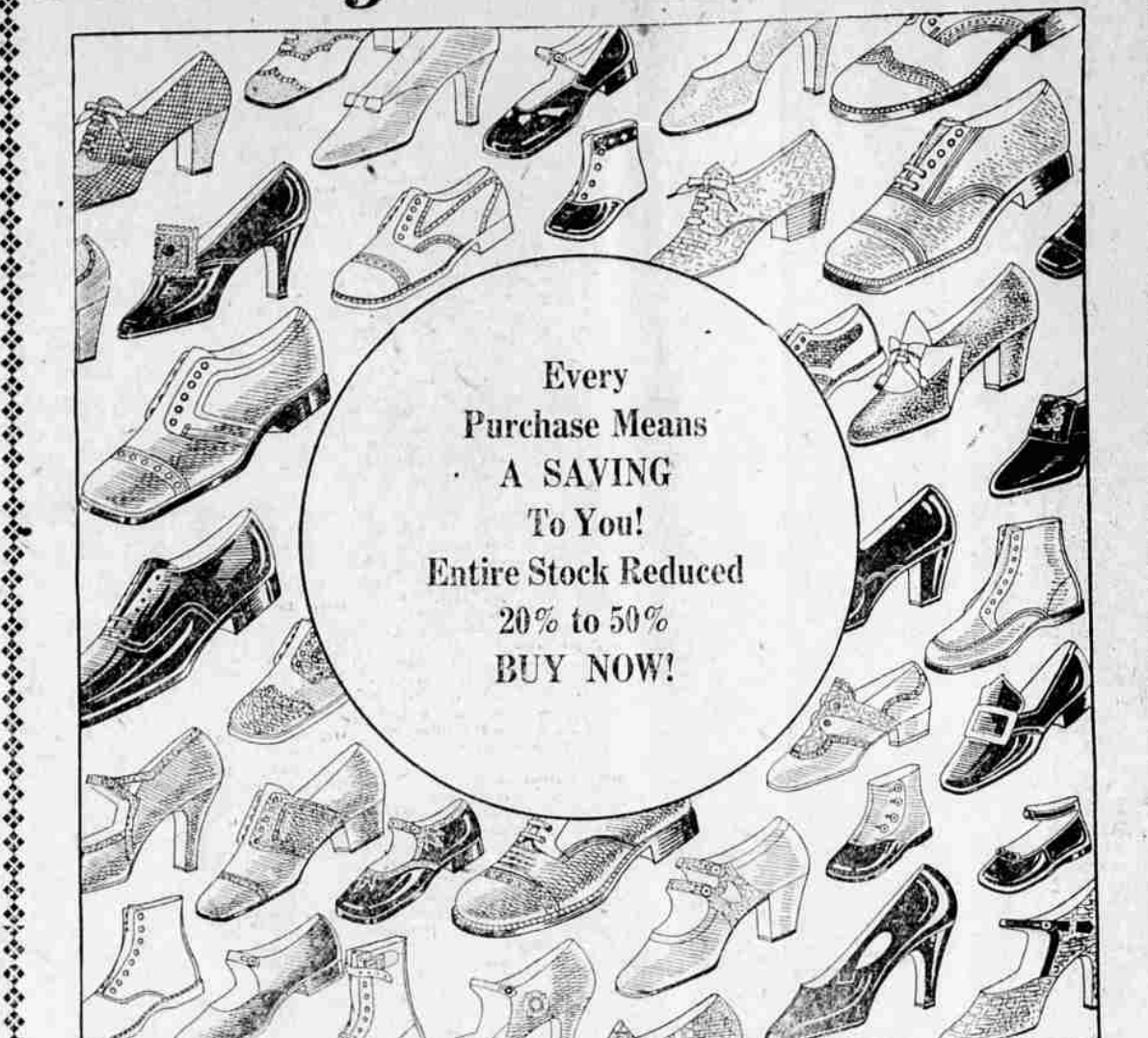
In summarizing the reasons for encouragement, I would say that 1928 should prove profitable, first, because the industrial east is prosperous with slight indications of change; second, because supplies of live stock are not excessive and will not exceed a normal demand;

COLONIAL The Family Entertainment

Last Time Today
ROD LA ROCQUE
in
"The Cruise of The Jasper B"



Ladies', Misses', Children's Fine Shoes At January Clearance Prices



Every Purchase Means A SAVING To You! Entire Stock Reduced 20% to 50% BUY NOW!

Shoes of the Quality Typical of West's

Our entire stock of Ladies', Misses' and Children's shoes, reduced from 20% to 50%. This includes all of our latest numbers of fall and winter styles at this substantial saving. See the large assortments in 20% bargain lots and remember the savings of at least...

- \$3.95** Ladies' patent and kid, one, two and three strap styles, many with built-in supports and Cuban heels. Growing girls' brown and tan, flat heel styles—values in this lot to \$11.50, now priced **\$3.95** at
- \$1.95** Ten calf and black patent and brown calfskin high shoes and oxfords for children, in sizes from 5 to 8½, all with heavy, good wearing soles, all specially priced for clearance, at **\$1.95**
- \$5.95** One lot of Armstrong brown, tan and blonde calfskin shoes in several pleasing styles. Light weight southern welt soles, with leather and covered black heels, formerly priced to \$11.75—priced specially **\$5.95**
- \$4.95** Short lines and broken sizes, in ladies' and growing girls' high grade shoes. Patent leather, kid and calfskin shoes, in all heels, and a number of pleasing styles. A number of these shoes **\$4.95** sold to \$15. Priced now
- \$2.75** Children's oxfords in sizes from 8½ to 11, of black patent leather and tan calfskins. All with Good-year welt soles and rubber heels. Trimmed in contrasting colors of tan. A very good look—**\$2.75** ing and serviceable shoe
- \$5.95** One lot of comfortable black kid and tan calfskin styles, with Cuban heels. These are Armstrong and Foot-Friend shoes, some with arch supports, in strap and pump styles—priced for clearance at **\$5.95**

N. K. WEST & CO., INC.

LA GRANDE'S LEADING STORE For Over 25 Years

Newspaper Bombed; No One Is Injured

BRANTON, Pa., Jan. 2 (AP)—The building and equipment destroyed by a blast of dynamite, the Branton Sun, afternoon newspaper, went about 400, however, of falling out the windows as it fell, while authorities were searching for the perpetrators of the explosion. The Sun building was shored up and windows of dwellings and other structures in the vicinity were broken by a heavy charge of explosive that went off in the hills just behind the building at the beginning of the new year. Three persons were cut by flying glass and only the fact that the paper does not publish a Sunday edition probably prevented any loss of life. No one was in the building at the time of the blast. For several months the Sun has made a campaign against violators of the liquor and other laws.

GREETINGS

We wish to thank our friends and customers for their patronage and co-operation during the year 1927.

May the New Year bring Health, Happiness and Prosperity to you all.

Home Independent Telephone Co.

GIANT NEW NAVY PLANE DESIGNED FOR TORPEDO WORK

WEST COAST LUMBER
By J. D. Tennant
(President, West Coast Lumber Bureau)

LONGVIEW, Wash., (AP)—Western lumbermen, like wheat farmers, have world markets for their products. They compete with forest products from all lands, so that until the remote corners of the earth send their building permits we cannot predict whether our 1928 production will be large or small, more profitable or less profitable. The United States during 1927 used approximately 25,000,000 board feet of lumber, or enough to build 2,000,000 five-room houses.

It is believed that lumber consumption increased during 1927 over 1926 within the United States. We know that our production was greater and that practically all the lumber made by our mills has been sold. Stocks on hand are lower now than they were a year ago. National markets for Douglas fir, west coast hemlock, western red cedar and Sitka spruce have nearly all widened during 1927. Our mills have shipped approximately 2,000,000,000 board feet, mostly Douglas fir to the Atlantic seaboard. Retail lumber dealers and our own market men expect that home building will continue unabated during 1928 and we are fairly sure now that a great quantity of farm building than ever before during one year will be launched in 1928. There is throughout the United States a distinct trend toward the greater use of wood in home construction than has been noticeable for 10 years. Engineers are building more heavy timbered buildings than for years past, and during the past 12 months a remodeling movement has sprung up all over the east and central states, which calls for wood replacement.

AGRICULTURE
By John Fields
(President, American Farm Congress)

WICHITA, Kas., (AP)—The outlook for agriculture is brighter than at any time since the depression of 1920. The farmer's dollar is well above 90 percent of its pre-war value and indications point to a further gain during 1928. Improvement of the cattle situation was one of the outstanding events for agriculture during 1927. The northern nose is in a better position than he has been since the slump in cattle prices started in August, 1919. After the big depression of 1920, ranch land was one of the poorest possessions anyone could have and anyone who touched the cattle business was likely to lose everything he had. But now cattle are scarce, while ranch lands are increasing in value. Cattlemen made money during 1927.

This giant T-31 torpedo plane is the navy's latest. It is a land ship, designed to fly far to sea and drop torpedoes on enemy vessels. It can carry four persons and has a 750-horsepower motor. The picture was taken at Clover Field, Santa Monica, after a flight from the San Diego base. At the right is Lieut. Logan Baumer, commander of the first squadron of the new planes.