

SOCIETY NEWS

Dinner Enjoyed At Zurbrick Home

Members of the Clio club were entertained at an attractive dinner...

Christmas Parties At Grange Hall

GRANGE HALL (Special)—Saturday evening members of the Gekeler family gathered at the home of Mr. and Mrs. Charles Gekeler...

On Christmas day, the Sam Williamson family gathered for dinner with four of the six children of Mr. and Mrs. Williamson present...

GRANGE HALL (Special)—Mr. and Mrs. George Gekeler entertained a number of guests at their home on Christmas Day...

Mothers, Daughters In Union Banquet

UNION (Special)—The first annual Mothers' and Daughters' banquet, sponsored by the Woman's club, was held Tuesday evening at six o'clock in the dining room of the Union hotel...

Nusbaum Weds Vera Newcomer

Wedding of interest to many people was solemnized at 10 a. m., Saturday, Dec. 23, W. Nusbaum, of this city, and Vera Newcomer, of Boise, united in marriage by the Rev. William Crosby Ross, pastor of the First Presbyterian church...

Ray Brown was hostess to a "Way-A-Tune Bridge club" afternoon at her home on 1st street. Three tables were during the afternoon and were won by Mrs. Frank Mrs. Sherrill Ewin won the prize and the guest prize Mrs. Elmer Rose.

Supreme Forest Woodmen joined with the men of the Woodmen Life association in a Christmas party held Wednesday at the Bohannan hall. The party held its regular meeting during the party, the main of which was a basket for the women furnishing the which were filled with good things to eat.

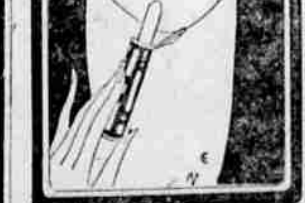
Presbyterian Ladies' Aid will meet Wednesday, Jan. 4, in the community room of the church. There will be a short business meeting followed by a social.

Robert Eakin will be chairman of the hostess committee and her will be Mrs. Evelyn Law. Mrs. Cora Joul, Mrs. Ilea, Mrs. J. H. Reid, Mrs. Sasser, Mrs. Emma McDon, K. Ed. Bean, Miss Margaret, Mrs. H. G. Smith, Mrs. J. C. Mrs. W. E. Buchanan and Jackson.

Announcements

The social meeting and program planned by the Ladies' Aid society and Brotherhood of the English Lutheran church for New Year's

Beautiful



This brilliant carmine lipstick shuts itself up in a smartly beautiful black and gold enameled container.

Even has been postponed until a later date, which has not yet been announced.

The tea for members of the Ladies' Society of the Brotherhood of Locomotive Firemen and Engine-men announced for yesterday afternoon will be held Thursday, Jan. 5, instead. The tea will be at the home of Mrs. W. L. Lane with Mrs. Fred Davies assisting as hostess.

LADD CANYON (Special)—The Get-Together club of Ladd Canyon will meet at the home of Mrs. William Buntan Thursday afternoon, Jan. 5. Mrs. Ilay Brown will have charge of the program.

Flappers Scorn "Pinafore Stuff"

PARIS (AP)—American flappers traveling abroad often fail to appreciate the compliment French dress designers pay to their youth by providing special "flapper mannequins" called in French "jeunes filles" type.

The mannequins affect naive mannerisms, wear flat heels and abstain from the sophisticated makeup and accessories that they wear with other styles.

"Imagine me looking like that," giggled a 17-year-old American girl who was buying her own clothes alone and unaided at one of the biggest dress houses, when a simple model designed especially for debutantes was shown her.

LONDON (AP)—The ratchet effect is being in women's hats in London just now. Most of them are "apache" in shape and designed for the young.

Apache Hat Fad London's Latest

LONDON (AP)—The ratchet effect is being in women's hats in London just now. Most of them are "apache" in shape and designed for the young.

Apache Hat Fad London's Latest

LONDON (AP)—The ratchet effect is being in women's hats in London just now. Most of them are "apache" in shape and designed for the young.

Apache Hat Fad London's Latest

LONDON (AP)—The ratchet effect is being in women's hats in London just now. Most of them are "apache" in shape and designed for the young.

LONDON (AP)—The ratchet effect is being in women's hats in London just now. Most of them are "apache" in shape and designed for the young.

LONDON (AP)—The ratchet effect is being in women's hats in London just now. Most of them are "apache" in shape and designed for the young.

LONDON (AP)—The ratchet effect is being in women's hats in London just now. Most of them are "apache" in shape and designed for the young.

LONDON (AP)—The ratchet effect is being in women's hats in London just now. Most of them are "apache" in shape and designed for the young.

LONDON (AP)—The ratchet effect is being in women's hats in London just now. Most of them are "apache" in shape and designed for the young.

LONDON (AP)—The ratchet effect is being in women's hats in London just now. Most of them are "apache" in shape and designed for the young.

LONDON (AP)—The ratchet effect is being in women's hats in London just now. Most of them are "apache" in shape and designed for the young.

LONDON (AP)—The ratchet effect is being in women's hats in London just now. Most of them are "apache" in shape and designed for the young.

LONDON (AP)—The ratchet effect is being in women's hats in London just now. Most of them are "apache" in shape and designed for the young.

LONDON (AP)—The ratchet effect is being in women's hats in London just now. Most of them are "apache" in shape and designed for the young.

LONDON (AP)—The ratchet effect is being in women's hats in London just now. Most of them are "apache" in shape and designed for the young.

Bridge Pointers

When Contract with its enormous penalties was first introduced into this country, the general theory was that a severe brake would have to be put upon bidding that had become conventional in Auction Bridge in order to limit excessive losses; and that this especially should be the case when the bidding side was vulnerable and consequently when, if defeated, the penalties would be greatly increased.

The development of the game of Contract Bridge, however, has not demonstrated that the original theory was sound. Caution in Contract can be greatly overdone. If players fail to bid with hands which would produce games, and permit their opponents to run away with a game every time it is in the hand, the opponents—while at times suffering losses—will in the long run be much more than compensated by the premiums that they obtain for winning their rubbers. The conservative player who stays out of all pots unless he has a big hand, loses a few insignificant antes, but the conservative Contract bidder, who never permits himself to make a bid unless he has a clutch, loses so many 700's that with normal luck his score presents a sad figure at the end of the season.

It is not bids of one or even two that result in the severe losses! It is the game-going bids which prove expensive when they fail. The lower bids which a game-going Contract could not be made, and the opponents will not double a low bid so frequently as they will a game-going bid is a game-goer so that the value of the double will be materially increased.

The one-bids, especially when made in a suit, are of enormous value to the partner and sometimes quite damaging to the opponents. They frequently keep the opponents from making a declaration which, if made, would be successful. They give the partner information as to a lead in the event of the opponents obtaining the con-

tract and they show the partner the character of the hand so that the partner may be able to bid to his greatest advantage. They also produce partial scores, the value of which will be shown next week.

On Thursday, Friday and Saturday next, the subject of these articles will be Contract Bridge; they will explain the strength required for initial Contract bids.

(John F. Dille Co.)

tract and they show the partner the character of the hand so that the partner may be able to bid to his greatest advantage. They also produce partial scores, the value of which will be shown next week.

MENUS

By SISTER MARY

BREAKFAST—Halves of grape fruit, cereal, cream, eggs, poached in milk on graham toast, fried hominy, syrup, milk, coffee.

LUNCHEON—Cream of celery soup, croquettes, spinach salad, brown bread, baked Indian pudding, milk tea.

DINNER—New England boiled dinner, tomato jelly salad, crisp cookies, canned peaches, milk, coffee.

Corned beef or fat salt pork can be used in a "boiled dinner" as the cook prefers. If pork is used, the vegetables and meat can be cooked together to advantage since the vegetables flavor the meat quite delicately and deliciously. If corned beef is used, the vegetables should be cooked in meat broth after the meat is done.

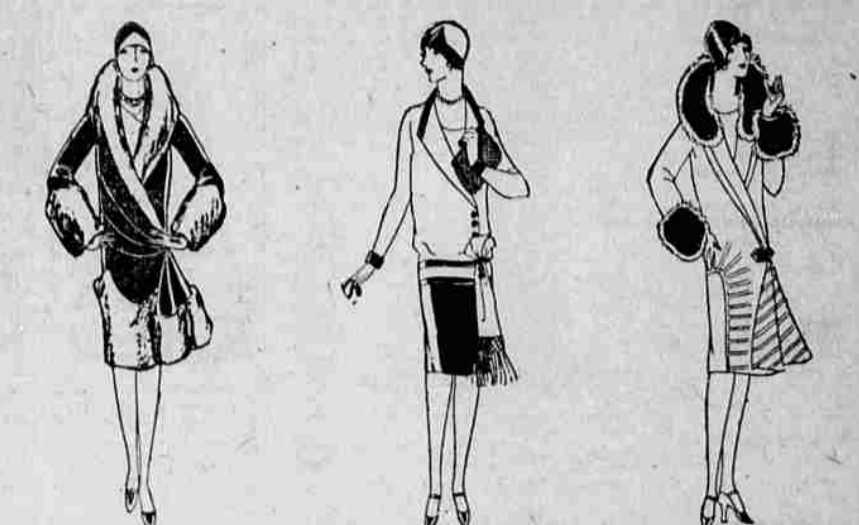
Baked Indian Pudding

Two tablespoons corn meal, 3 cups milk, 1 tablespoon butter, 3 tablespoons molasses, 1/2 cup seeded raisins, 1/4 teaspoon salt, 1/4 teaspoon ginger, 1/2 teaspoon cinnamon, 1 egg.

Mix cornmeal with 1/2 cup cold water. Heat 2 1/2 cups milk to the scalding point and stir into cornmeal. Cook over boiling water for 15 minutes. Stir in butter, molasses, raisins, salt ginger and cinnamon. Remove from heat and add egg well-beaten. Turn into a well-buttered pudding dish and pour over remaining half cup of milk. Bake in a moderate oven for 45 minutes. Serve with or without hard sauce.

The people who are all wrapped up in themselves are apt to have the most chilly manners.

Putman's January Clearance Starts Saturday, December 31st.



COATS -- DRESSES -- MILLINERY

ALL COATS 1-3 to 1-2 Off
Hosiery Lingerie Shoes Everything Reduced
ALL DRESSES 1-4 to 1-3 Off

Putman's Clearance Sales are known for exceptional values. At this time of year we clear our stocks of all winter garments.

ONE GROUP DRESSES \$9.95 BUY NOW AND SAVE ONE GROUP DRESSES Values to \$27.50 Now \$12.50

PUTMAN'S La Grande's Exclusive Ready-To-Wear Millinery & Shoes

STONE'S MODERN FOOD STORES CHAIN STORES. 1923 -- 1928. Since opening our first store at Susanville, California, in 1923, we have consistently forged ahead, and 1928 finds us operating STONE'S CASH STORES in California, Oregon, Washington and Idaho. We are proud of our stores located in the above states and thankful to the many patrons who have made our success possible. Mindful of this obligation, we are determined to put forth our greatest efforts to serve you honestly, courteously, and in every way make our transactions profitable and a pleasure to all. With new hopes and an earnest desire that we may be of some assistance to our fellow beings as we are passing by, we wish you all— A HAPPY AND PROSPEROUS NEW YEAR SAVE!-- SATURDAY AND TUESDAY --SAVE!

BEFORE THE MIKE SATURDAY'S PROGRAMS. The National Broadcasting Company program (N. B. C.) for Saturday night follows: 8 to 9, R. C. A. hour; 9 to 10, Philco hour; 10 to 12, dance period. KGO—Oakland (254.7m-780kc) 6, dinner concert; 7, utility; 8 to 10, N. B. C.; 10 to 12, dance orchestra. KOIN—Portland (219m-540kc) 6, dinner concert; 7:15, orchestra; 8 to 10, R. M. Wolford Merry numbers frolic. KFI—Los Angeles (468.5m-640kc) 6:30, orchestra; 7:30, program; 8 to 10, N. B. C.; 10, Packard program; 11, Midnight frolic. KEX—Portland (239.9m-1250kc) 6, utility; 7 to 8, orchestra; 8, good citizenship program; 10 to 12, dance frolic. KGW—Portland (431m-610kc) 6, dinner concert; 7, KOMO concert; 8 to 12, N. B. C. KFO—San Francisco (422.5m-710kc) 8, children's hour; 6:30,

CUTS-SORES VICKS VAPORUB. Cleanse thoroughly—then, without rubbing, apply— VICKS VAPORUB. Over 17 Million Jars Used Yearly. CAPITAL FURNISHED. We are in a position to dispose of the unsold portion and underwrite the securities of any going corporation. We have financed many corporations which are now operating very successfully. Write or call for complete information D. A. COPLIN & CO. Financial Center Building San Francisco, California.

Thompson's Cold and Grippe Tablets. Coughs and colds are quickly relieved by using— Thompson's Cold and Grippe Tablets. Moon Drug Co. Agents for The Owl Drug Co.

Wonderful Light For Rural Homes Beats Electric or Gas. PORTLAND, Dec. 16.—An eminent professor in a leading scientific institute has completed a very interesting test on a most remarkable white light for home use. The test shows that this wonder light is superior to electric, is cheaper than common oil light and is the closest to sunlight of any artificial light. A leading eye specialist says this light is a boon to country people where poor lights are causing much damage to eyesight. The fuel used is common kerosene and the lamp is so simple and safe that a child can light it. It burns without odor or noise, no pumping up. The U. S. Government and 22 universities have also tested this remarkable light and have data as to its wonderful quality, efficiency and economy. Readers sending their name and address on a post card to V. M. Johnson, 161 North Union Ave., Portland, Ore., will learn full particulars as to wholesale prices and how to get one free by showing it to friends and neighbors. Mr. Johnson also wants men and women to act as distributors. Exclusive territory given.

Shoe Sale! Our Annual Sale of Shoes and Hosiery starts Saturday, Dec. 31, 1927. We are convinced that we can save you money on footwear. THE BOOTERY