

SOCIETY NEWS

Order of Rainbow, De Molay Boys in Christmas Party

One of the most successful parties of the holiday season was held in the Masonic parlors last evening when members of the Order of Rainbow for Girls joined the boys of the Order of DeMolay in a surprise Christmas party.

The parlors were attractively decorated in keeping with the Christmas season, a lighted Christmas tree, red and green lamps, Santa Claus pictures and Merry Christmas greetings being used. A committee from the Order of Rainbow under the supervision of Miss Mildred Hoyt, member of the advisory board, arranged for this feature.

Dancing and games began immediately after the close of the initiatory work of the DeMolay chapter. During the evening the DeMolay quartet, which consists of Dale Charlton, William Beckie, Lee Moser and Tom Bruce, sang several selections.

At 11 o'clock refreshments were served. Favors were passed out to the boys, which contained the name of his partner for lunch. The lunch baskets were wrapped as Christmas packages and arranged around the Christmas tree. Several impromptu talks were given. Music was furnished by courtesy of the Eastern Oregon Music company.

About 75 young people were present for the party in addition to several advisors and counselors of the two orders.

Hope chapter, No. 13, Order of the Eastern Star, elected officers

Wednesday evening when the regular meeting was held in the Masonic lodge rooms here. Mrs. Lydia Loney was elected worthy matron; John S. Hodgins, worthy patron; Mrs. Hazel Graham, assistant matron; Mrs. Myrtle Beatty, conductress, and Mrs. Ida Robertson, assistant conductress.

The officers will be installed at the first meeting of the chapter in January, which will be Wednesday, Jan. 11.

Dr. and Mrs. R. G. McCall took 16 of the Osoha campfire girls and their guardian, Miss Arta Verma, on a trailing party Wednesday evening. Henry Elbert furnished the hot sled and guided it for the girls. After trailing for some time the girls were brought back to town and were taken to Miss Verma's apartment, where refreshments were served.

Party Compliments Mrs. John Griffin

Complimenting Mrs. John Griffin, formerly Miss Louise O'Connell, who is in this city to spend the holidays with her parents, Mr. and Mrs. J. F. O'Connell, Mrs. Harry M. J. Turner entertained at five tables of bridge last evening at her home on Cedar street.

The home was prettily decorated for the occasion in keeping with the Christmas season, red carnations and holly being used.

During the evening's play Mrs. Bill Templeton made high score and the second prize went to Mrs. Fred Speth. Mrs. William Pearce received the consolation prize. A

quest prize was given to Mrs. Griffin.

Mrs. Robert Williams was hostess to the N. R. H. club yesterday afternoon. Three tables of bridge were at play and high score was won by Mrs. H. W. Riley. Mrs. R. H. Smith received the second prize. The rooms were decorated in keeping with the Yuletide season. After the card games the hostess served a two-course luncheon.

Mrs. H. W. Riley will be the next hostess to the club.

The To-Way-A-Tam club was entertained yesterday afternoon at the home of Mrs. Harty Hansen here. Bridge was the diversion of the afternoon and high score went to Mrs. Adolph Poesler. Mrs. Henry Esvin won the second prize.

Following the card games the hostess served a two-course luncheon.

Mrs. Inay Brown will be hostess to the club at its next meeting, which will be Thursday, Dec. 25.

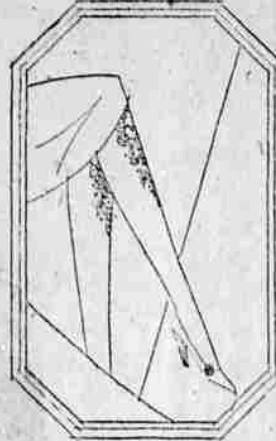
An all-day meeting of the Home Missionary society of the First Methodist Episcopal church was held yesterday afternoon at the home of Mrs. Lee Hanford. The meeting was well attended and during the morning the women worked on comforters.

At noon a patook luncheon was enjoyed and in the afternoon the regular study lesson was given by Mrs. T. K. Pierson. Mrs. H. W. Parker had charge of the devotion.

IMBLEN (Special)—The Pythian Sister lodge met Wednesday evening, when the grand chief, Mrs. Leo Hattach, paid an official visit to the lodge.

During the evening officers were elected. Mrs. Ella M. Walker was elected past chief; Mrs. Velma McKinnis, excellent senior; Mrs. Emma Furman, excellent junior; Mrs. Georgia McKinnis, manager;

Embroidery



Black embroidery on mesh still draws the interest to the knee it new hose for fall.

Mrs. Arma McKinnis, mistress of records and correspondence; Mrs. Flora Goring, mistress of finance; Mrs. Anna Furman, protector; Mrs. Lettie McDaniel, outer guard and Mrs. Levin Fox, pianist.

The meeting was attended by a large number of Knights of Pythias in addition to many Pythian Sisters.

Announcements

Members of Oliver P. Morton High School No. 27 will give their regular monthly dinner tomorrow at noon at the K. P. hall. All members of the Grand Army of the Republic are especially invited to attend.

MENUS

By Sister Mary
BREAKFAST—Sliced bananas, cereal, cream, creamed dried beef on toast, extra toast, marmalade, milk, coffee.
LUNCHEON—Baked beans, canned stewed tomatoes, brown bread, cottage pudding with maple milk, tea.
DINNER—Broiled beef steak, mashed potatoes, buttered kale, head lettuce with Thousand Island dressing, fig pudding, milk, coffee.
 Stale cake can be cut in squares, steamed until warm and soft and served with any preferred sauce as a cottage pudding. Simple, one- or two-egg loaf cakes without frosting are especially good to use up this way.

Baked Beans
 Two cups dried navy beans, 1 teaspoon soda, 1 small onion, 1-3 pound salt pork, 1 tablespoon baking molasses, 1 tablespoon brown sugar, 1 teaspoon salt, 1 teaspoon mustard, 1 cup boiling water.
 Wash and pick over beans. Cover with cold water and let stand over night. In the morning drain and rinse in fresh water. Put on to cook in cold water to cover and bring to the boiling point. Drain, cover with fresh water, add soda and cook until skin wrinkles when two or three beans are taken out on a spoon and blown upon. Drain and rinse beans in cold water. Pour scalding water over pork and scrape rind. Scour in half-inch strips. Peel onion and place in bottom of bean pot. Cover with half the beans. Add prepared pork and cover with remaining beans. Mix molasses, sugar, salt and mustard with boiling water and pour over beans. Add enough more boiling water to cover. Cover bean pot and bake in a slow oven for six hours, adding water as necessary to keep beans covered until last hour of baking. Then remove cover; pull pork to top and brown. Remove onion to serve.

Library Chats

New books to be added to the public library Saturday evening, Dec. 17, follow:
 Benchley, "The Early Worm."
 Black, "The Real Europe Pocket Guide Book."
 Carr, "Psychology."
 Crosby, "The Geography of 1916 Lands."
 Deering, "Kitty."
 Catcher, "Death Comes to the Archdiocese."
 De la Roche, "Jalna," winner of the \$10,000 Atlantic monthly prize.
 Ellis, "The Soul of Spain."
 Eitz, "Now East, Now West."
 Farnham, "Rebellion."
 Farnol, "The Quest of Youth."
 Freeman, "The Magic Casket."
 Furman, "The Lonesome Road."
 Gray, "Fertile River."
 Horn, "Trader Horn."
 King, "The Spreading Dawn."
 Ludwig, "Wilhelm Hohenzollern, the Last of the Kaisers."
 Mills, "Romance of Geology."
 Moxley, "Finding My Place."
 Newcomb, "The Spanish House for America."
 Niles, "Casual Wanderings in Ecuador."
 O'Brien, "Best Short Stories of 1927."
 Osborne, "As It Is in England."
 Osteno, "The Mad Carews."
 Porter, G. S., "Let us Highly Resolve."
 Potter, "The Art of the Vatican."
 Freyer, "The Art of the Berlin Galleries."
 Freyer, "The Art of the Vienna Galleries."
 Richmond, "Light Up."
 Robinson, "Tristram."
 Rolland, "Mother and Son."
 Sabatini, "The Nuptials of Corbal."
 Helingo, "Heta and Spurs."
 Spencer, "Essays on Education."
 Reichler, "The Skin, its Care and Treatment."
 Wiggam, "The Next Age of Man."
 Wodehouse, "The Small Naphe-

BEFORE THE MIKE

SAFARI DAY'S PROGRAMS

The National Broadcasting company program (N. B. C.) for Saturday night follows: 8 to 9, R. C. A. orchestra, vocal soloists; 9 to 10, Philco hour; 10 to 12, Saturday night dance period.
 KGO—Oakland (128.4-730kc), 6 to 7, dinner concert; 7, utility; 7:15, sports; 8 to 9, N. B. C.; 10 to 12, dance music.
 KEX—Portland (732.5-1250kc), 6, utility; 6:30, children's program; 7, concert; 8, road citizenship program; 10 to 12, dance music.
 KFI—Los Angeles (148.5-670kc), 6 to 7, orchestra; 7:15, news; 8 to 9, N. B. C.; 9:15, 10, 11, 12, 13, 14, 15, 16, 17, 18, 19, 20, 21, 22, 23, 24, 25, 26, 27, 28, 29, 30, 31, 32, 33, 34, 35, 36, 37, 38, 39, 40, 41, 42, 43, 44, 45, 46, 47, 48, 49, 50, 51, 52, 53, 54, 55, 56, 57, 58, 59, 60, 61, 62, 63, 64, 65, 66, 67, 68, 69, 70, 71, 72, 73, 74, 75, 76, 77, 78, 79, 80, 81, 82, 83, 84, 85, 86, 87, 88, 89, 90, 91, 92, 93, 94, 95, 96, 97, 98, 99, 100, 101, 102, 103, 104, 105, 106, 107, 108, 109, 110, 111, 112, 113, 114, 115, 116, 117, 118, 119, 120, 121, 122, 123, 124, 125, 126, 127, 128, 129, 130, 131, 132, 133, 134, 135, 136, 137, 138, 139, 140, 141, 142, 143, 144, 145, 146, 147, 148, 149, 150, 151, 152, 153, 154, 155, 156, 157, 158, 159, 160, 161, 162, 163, 164, 165, 166, 167, 168, 169, 170, 171, 172, 173, 174, 175, 176, 177, 178, 179, 180, 181, 182, 183, 184, 185, 186, 187, 188, 189, 190, 191, 192, 193, 194, 195, 196, 197, 198, 199, 200, 201, 202, 203, 204, 205, 206, 207, 208, 209, 210, 211, 212, 213, 214, 215, 216, 217, 218, 219, 220, 221, 222, 223, 224, 225, 226, 227, 228, 229, 230, 231, 232, 233, 234, 235, 236, 237, 238, 239, 240, 241, 242, 243, 244, 245, 246, 247, 248, 249, 250, 251, 252, 253, 254, 255, 256, 257, 258, 259, 260, 261, 262, 263, 264, 265, 266, 267, 268, 269, 270, 271, 272, 273, 274, 275, 276, 277, 278, 279, 280, 281, 282, 283, 284, 285, 286, 287, 288, 289, 290, 291, 292, 293, 294, 295, 296, 297, 298, 299, 300, 301, 302, 303, 304, 305, 306, 307, 308, 309, 310, 311, 312, 313, 314, 315, 316, 317, 318, 319, 320, 321, 322, 323, 324, 325, 326, 327, 328, 329, 330, 331, 332, 333, 334, 335, 336, 337, 338, 339, 340, 341, 342, 343, 344, 345, 346, 347, 348, 349, 350, 351, 352, 353, 354, 355, 356, 357, 358, 359, 360, 361, 362, 363, 364, 365, 366, 367, 368, 369, 370, 371, 372, 373, 374, 375, 376, 377, 378, 379, 380, 381, 382, 383, 384, 385, 386, 387, 388, 389, 390, 391, 392, 393, 394, 395, 396, 397, 398, 399, 400, 401, 402, 403, 404, 405, 406, 407, 408, 409, 410, 411, 412, 413, 414, 415, 416, 417, 418, 419, 420, 421, 422, 423, 424, 425, 426, 427, 428, 429, 430, 431, 432, 433, 434, 435, 436, 437, 438, 439, 440, 441, 442, 443, 444, 445, 446, 447, 448, 449, 450, 451, 452, 453, 454, 455, 456, 457, 458, 459, 460, 461, 462, 463, 464, 465, 466, 467, 468, 469, 470, 471, 472, 473, 474, 475, 476, 477, 478, 479, 480, 481, 482, 483, 484, 485, 486, 487, 488, 489, 490, 491, 492, 493, 494, 495, 496, 497, 498, 499, 500, 501, 502, 503, 504, 505, 506, 507, 508, 509, 510, 511, 512, 513, 514, 515, 516, 517, 518, 519, 520, 521, 522, 523, 524, 525, 526, 527, 528, 529, 530, 531, 532, 533, 534, 535, 536, 537, 538, 539, 540, 541, 542, 543, 544, 545, 546, 547, 548, 549, 550, 551, 552, 553, 554, 555, 556, 557, 558, 559, 560, 561, 562, 563, 564, 565, 566, 567, 568, 569, 570, 571, 572, 573, 574, 575, 576, 577, 578, 579, 580, 581, 582, 583, 584, 585, 586, 587, 588, 589, 590, 591, 592, 593, 594, 595, 596, 597, 598, 599, 600, 601, 602, 603, 604, 605, 606, 607, 608, 609, 610, 611, 612, 613, 614, 615, 616, 617, 618, 619, 620, 621, 622, 623, 624, 625, 626, 627, 628, 629, 630, 631, 632, 633, 634, 635, 636, 637, 638, 639, 640, 641, 642, 643, 644, 645, 646, 647, 648, 649, 650, 651, 652, 653, 654, 655, 656, 657, 658, 659, 660, 661, 662, 663, 664, 665, 666, 667, 668, 669, 670, 671, 672, 673, 674, 675, 676, 677, 678, 679, 680, 681, 682, 683, 684, 685, 686, 687, 688, 689, 690, 691, 692, 693, 694, 695, 696, 697, 698, 699, 700, 701, 702, 703, 704, 705, 706, 707, 708, 709, 710, 711, 712, 713, 714, 715, 716, 717, 718, 719, 720, 721, 722, 723, 724, 725, 726, 727, 728, 729, 730, 731, 732, 733, 734, 735, 736, 737, 738, 739, 740, 741, 742, 743, 744, 745, 746, 747, 748, 749, 750, 751, 752, 753, 754, 755, 756, 757, 758, 759, 760, 761, 762, 763, 764, 765, 766, 767, 768, 769, 770, 771, 772, 773, 774, 775, 776, 777, 778, 779, 780, 781, 782, 783, 784, 785, 786, 787, 788, 789, 790, 791, 792, 793, 794, 795, 796, 797, 798, 799, 800, 801, 802, 803, 804, 805, 806, 807, 808, 809, 810, 811, 812, 813, 814, 815, 816, 817, 818, 819, 820, 821, 822, 823, 824, 825, 826, 827, 828, 829, 830, 831, 832, 833, 834, 835, 836, 837, 838, 839, 840, 841, 842, 843, 844, 845, 846, 847, 848, 849, 850, 851, 852, 853, 854, 855, 856, 857, 858, 859, 860, 861, 862, 863, 864, 865, 866, 867, 868, 869, 870, 871, 872, 873, 874, 875, 876, 877, 878, 879, 880, 881, 882, 883, 884, 885, 886, 887, 888, 889, 890, 891, 892, 893, 894, 895, 896, 897, 898, 899, 900, 901, 902, 903, 904, 905, 906, 907, 908, 909, 910, 911, 912, 913, 914, 915, 916, 917, 918, 919, 920, 921, 922, 923, 924, 925, 926, 927, 928, 929, 930, 931, 932, 933, 934, 935, 936, 937, 938, 939, 940, 941, 942, 943, 944, 945, 946, 947, 948, 949, 950, 951, 952, 953, 954, 955, 956, 957, 958, 959, 960, 961, 962, 963, 964, 965, 966, 967, 968, 969, 970, 971, 972, 973, 974, 975, 976, 977, 978, 979, 980, 981, 982, 983, 984, 985, 986, 987, 988, 989, 990, 991, 992, 993, 994, 995, 996, 997, 998, 999, 1000.

Bridge Pointers

By Milton C. Work

Yesterday's hand which appears below was given, and six questions were asked concerning it. The questions are repeated in the explanations of my answers.



♠ K-J-10-8-6-5-4
♥ A-K-10-9
♦ A-J
♣

The Answers
 19. With the above hand, South (Dealer) should bid three Spades; preemption is advisable. Holding seven Spades, there is little doubt that the combined hands will work better with that suit than trump with any other. To shut out an adverse heart bid may be important. The opponents may have game in hearts, but neither may be able to bid four without hearing from the other. Four Spades, to make pre-emption sure, would be a declaration which should be considered with this hand but that involves increased and probably unnecessary risk.
 20. With the above hand, South with a score of 24 should bid three Spades. Although only one Spade is needed for game, pre-emption is just as advisable as at a live score.
 21. With the above hand, after a bid of one No Trump by South and a pass by West, North should bid two Spades. With a partner holding No Trumps, there is no need for pre-empting. Should the partner bid two No Trumps (as is probable), three Spades can be bid to show much greater length than a normal take-out. If, after this, the partner bid three No Trumps, that bid should be permitted to stand.
 22. With the above hand, after passes by South and West, North

NEW BAGS, NEW BEADS
 NEW FLOWERS
 Make ideal gifts for Her.

PUTMAN'S

La Grande's Exclusive Ready-To-Wear
 Millinery & Shoes

should bid three Spades. While the out suit consumption to low situation is not as attractive as quality products served in hotels, all the help needed to go game really may be in the hand of the partner who has passed.
 23. With the above hand, after a bid of one heart by South and a pass by West, North should bid one Spade. With South bidding hearts, there is no need for pre-emption.
 24. With the above hand, after three passes, East should bid three Spades. While it is dangerous to open the bidding fourth hand with a void major suit, it is unlikely that an opponent unable to bid on the first round, would be able to bid four on the second. With so little needed in the hand of the partner to make game, it would be inadvisable to pass and surrender the hand.
 Copyright John F. Dille Co.

The German Athletic Board refuses to let Dr. Otto Pelzer run in this country. The Germans must have gained the impression that everybody over here was ready to join in from the Republican politicians.

A mother-in-law is only a relative trouble after all.

For Christmas

Electric Percolators
 Electric Toasters
 Electric Waffle Iron
 Any Coffee Makers
 Fancy Chinaware
 and
 Glassware

WOULD DEFINE ICE CREAM
 LONDON (AP)—Efforts are being made to obtain a legal definition for ice cream as a frozen product containing certain amounts of milk fat and solids and to license local vendors in order to increase ice cream sales in the United Kingdom. Manufacturers blame press.

Enuresis (bed-wetting)

Mothers, relieve your child of the nuisance of bed-wetting by the timely use of Foley Pills diuretic. Used and recommended everywhere. Ask for

Foley Pills

A diuretic stimulant for the kidneys
 Sold Everywhere
 Phone Main 10

JOEL'S

RENTS REDUCED ONE-HALF!

If you are renting a house, just imagine the difference it would make in your financial well-being if your rent were cut in two! If you were running a business, imagine the saving you'd make with your rent item reduced one-half!

Yet the low rent of our suburban location (less than half what a downtown store room would cost each month) is only one saving in overhead that helps us undersell on quality grocery lines.

It pays to buy at Joel's — in money saved — in personal service. New customers from all over the La Grande territory are "discovering" us. Visit the store — compare Joel's prices for your own satisfaction.

SPECIALS for Saturday and Monday

1/2 Gallon Log Cabin Maple Syrup.....	98c
Powdered Sugar, 3 Pounds.....	25c
Tender, Melting Peas, Preferred Stock.....	17c
Extra Fancy Jumbo Salted Peanuts, Pound.....	25c
Large Florida Grapefruit, 3 for.....	39c
1 Pound Flat Tin Preferred Stock Red Salmon.....	38c
Schilling's Coffee, Pound.....	47c

RED CINNAMON CANDIES, Pound..... 40c

MEAT DEPARTMENT

Fresh Smoked Ham, by the whole or half
25c lb.
 Guaranteed
 FRESH DRESSED RHODE ISLAND RED CHICKENS
 Beef and Pork ground for meat loaf, 2 Pounds..... 45c

Credit and Free Delivery
Main 759
 Joel's Personal Service

WONDERFUL LIGHT For Rural Homes

Beats Electric or Gas

PORTLAND, Dec. 16.—An eminent professor in a leading scientific institute has completed a very interesting test on a most remarkable white light for home use. The test shows that this wonder light is superior to electric, is cheaper than common oil light and is the closest to sunlight of any artificial light.

A leading eye specialist says this light is a boon to country people where poor lights are causing much damage to eyesight. The fuel used is common kerosene and the lamp is so simple and safe that a child can light it. It burns without odor or noise, no burning up of the light fixture and no dripping. The U. S. Government and its universities have also tested this remarkable light and have data as to its wonderful qualities, efficiency and economy.

Readers sending their name and address on a post card to V. M. Johnson, 181 North Union Ave., Portland, Ore., will learn full particulars as to wholesale prices and how to get one free by showing it to friends and neighbors. Mr. Johnson also wants men and women to act as distributors. Exclusive territory given.

Library Chats

New books to be added to the public library Saturday evening, Dec. 17, follow:
 Benchley, "The Early Worm."
 Black, "The Real Europe Pocket Guide Book."
 Carr, "Psychology."
 Crosby, "The Geography of 1916 Lands."
 Deering, "Kitty."
 Catcher, "Death Comes to the Archdiocese."
 De la Roche, "Jalna," winner of the \$10,000 Atlantic monthly prize.
 Ellis, "The Soul of Spain."
 Eitz, "Now East, Now West."
 Farnham, "Rebellion."
 Farnol, "The Quest of Youth."
 Freeman, "The Magic Casket."
 Furman, "The Lonesome Road."
 Gray, "Fertile River."
 Horn, "Trader Horn."
 King, "The Spreading Dawn."
 Ludwig, "Wilhelm Hohenzollern, the Last of the Kaisers."
 Mills, "Romance of Geology."
 Moxley, "Finding My Place."
 Newcomb, "The Spanish House for America."
 Niles, "Casual Wanderings in Ecuador."
 O'Brien, "Best Short Stories of 1927."
 Osborne, "As It Is in England."
 Osteno, "The Mad Carews."
 Porter, G. S., "Let us Highly Resolve."
 Potter, "The Art of the Vatican."
 Freyer, "The Art of the Berlin Galleries."
 Freyer, "The Art of the Vienna Galleries."
 Richmond, "Light Up."
 Robinson, "Tristram."
 Rolland, "Mother and Son."
 Sabatini, "The Nuptials of Corbal."
 Helingo, "Heta and Spurs."
 Spencer, "Essays on Education."
 Reichler, "The Skin, its Care and Treatment."
 Wiggam, "The Next Age of Man."
 Wodehouse, "The Small Naphe-

Give Stationery For Xmas

We have some very attractive boxes that would make an ideal Christmas Gift.

Priced from 75c to \$5.00

Moon Drug Co.

Agents For The Owl Drug Co.

STONE'S

CASH AND CARRY MODERN FOOD STORES
 CHAIN STORES We Deliver
 Phone Orders Main 91 We Deliver 50 Orders

Are You Reading Our Ads?

Are you taking advantage of the unusual savings Stone's offer each week? If not, you are overlooking something worth while. Our stores are full of the finest Holiday Merchandise, priced at a saving. Be sure and see our display of Xmas Candies, Nuts, Oranges, Cranberries, and everything to make your Holiday dinners the best ever.

SAVE SATURDAY AND MONDAY SAVE

BUTTER Finest Quality Local Creamery. 2 Pounds.....	95c
SUGAR In cloth bags 10 lbs. 69c	
GEM NUT Swift's Oleomargarine 3 lbs. 55c	
RICE Fancy New Crop 5 lbs. 29c	
ORANGES New Crop Navels, well colored and flavored, 2 Dozen.....	69c
XMAS CANDIES Be sure to see our Candies before you buy. We are prepared to fill your order, large or small, at prices that will please you.	
CHOCOLATES Hand dipped, in Xmas package 2 1/2 Lb. box.....	89c
MINCE MEAT Good old brandy in bulk 2 Lbs. 33c	
JEMIMA PANCAKE And Jemima Doll Free Large size.....	35c
XMAS MIX 2 lbs. 29c	
CREAM MIX 2 lbs. 39c	
JAP ORANGES Sweet, Juicy Xmas Fruit. Box.....	\$1.29
FLOUR Sperry's White Down, 49 Lb. Sack.....	\$1.69
ICING SUGAR C. & H. Powdered 5 lbs. 43c	
PORK AND BEANS Van Camps Med. 3 cans 25c	
MIXED NUTS All No. 1, new crop. Compare them with any. When judging mixed nuts, notice the size and quality of the walnuts—they are the basis and represent the average value of any mixed nuts. XMAS SPECIAL 2 lbs. 49c	
BROWN SUGAR Golden C, Light 5 lbs. 39c	

\$2.50 ORDERS DELIVERED FREE --- FOUR TIMES DAILY