



Building and Improvement



LA GRANDE ONLY OREGON CITY TO BETTER RECORD

Western States Survey Lists Local Building Permits as "Notable"

Building activity in the Pacific Coast states during the first nine months of the year has reflected a nine per cent reduction from that of the comparable period of 1926, according to a survey by S. W. Straus & Co. This slowing down in building is national in scope.

The survey, however, goes on to state that "some of the western cities, however, report notable increases, among the more important of these being Long Beach, Sacramento, Stockton, Fresno, Riverside, Pomona, Salinas and Eureka in California; both Phoenix and Tucson in Arizona; Boise, Jackson and Nampa, Idaho; La Grande, Oregon; Loma and Provo in Utah; Hoquiam and Vancouver, Washington; Victoria and New Westminster in British Columbia."

"Only Oregon City" La Grande was the only Oregon city mentioned as showing a "notable increase," although records were made by some of the larger

cities of the state that topped this city's figures in dollars and cents. La Grande, however, was the only city having an outstanding increase during the first nine months of the year. Eugene, Klamath Falls, Salem and Portland all had more building permits, although Astoria, Marshfield, Medford, Baker, Pendleton and many others were below this city in total building.

Following are figures, both for September, and for the first nine months, for some of the leading Oregon cities:

City	Sept.	Total
Astoria	54,119	54,119
Eugene	75,275	75,275
Klamath Falls	41,395	41,395
La Grande	23,345*	23,345*
Marshfield	12,855	12,855
Medford	72,995*	72,995*
Portland	1,496,395	1,496,395
Salem	231,900	231,900

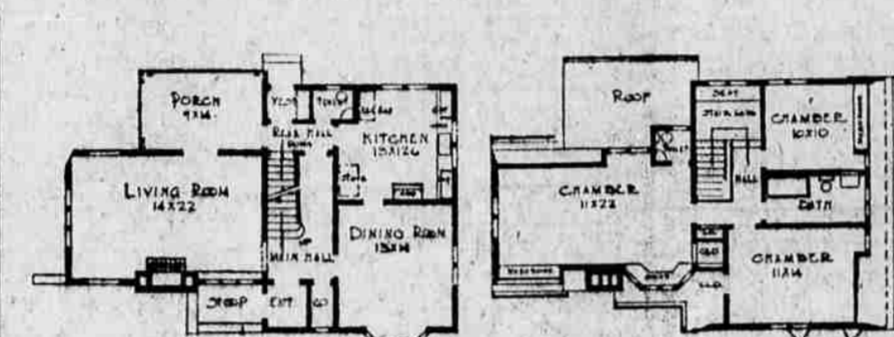
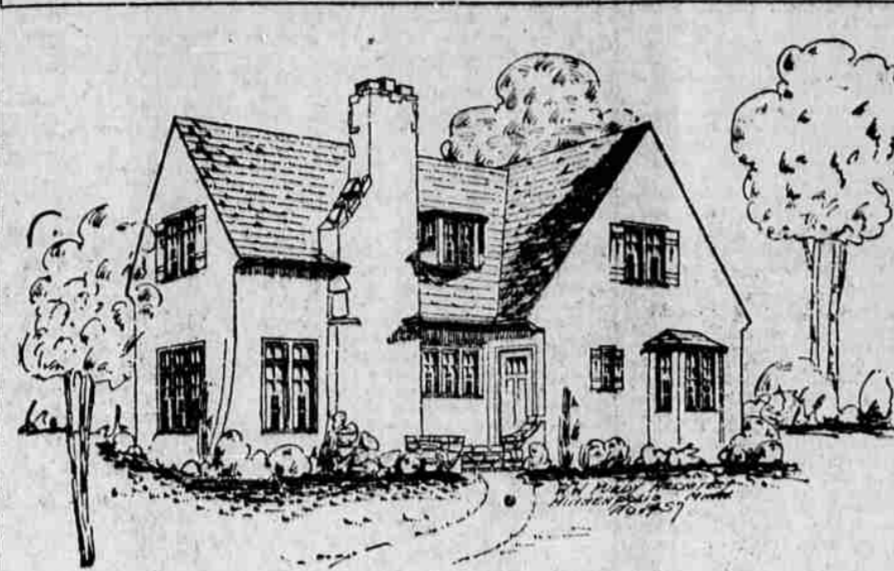
* Looking back to September, 1926, every city in the above list had larger permits for the year before than this year excepting La Grande and Medford.

City	9 Mo., 1927
Astoria	126,731
Eugene	1,247,392
Klamath Falls	1,769,379
La Grande	862,863*
Marshfield	138,325
Medford	554,779
Portland	24,378,929
Salem	2,296,427

* La Grande only Oregon city showing an increase over the first nine months of 1926.

Surpasses Many Cities of the western states out-

HOME OF ENGLISH COTTAGE TYPE



By W. W. Purdy

A striking example of the English cottage type. Note the graceful sweep of the roof lines, extending down to form a shelter for the entrance doors, the variegated slate roof, with its irregular butts, a color effect that is most beautiful, contrasted to this is the texture of the exterior cement plaster, and the blue-green of the trim, a color combination that is most pleasing.

From the stone stoop, one enters the entry before entering the main hall. An archway is used between hall and living room, with a single door between hall and dining room. The ceiling of the living room is arched, and the tile mantel is beautiful to look upon. The end of the living room, by its treatment of casement windows extending down almost to the floor is virtually a sun room in itself, while a screened-in porch is located off the living room to be used as a living and eating porch.

The rooms are all fair sized, well arranged, with ample light and ventilation. Note the rear vestibule, with hanging space for coats. A toilet located off the rear entrance hall.

On the second floor are three bedrooms, the master's room, large enough for twin beds, wardrobe, toilet and a window seat. The other two chambers have direct access to the bath, all opening off a center hall, with linen closet.

There is a full basement with a boiler room, laundry, amusement room, storage, etc. All rooms partitioned off and plastered.

For the floors, rubber tile, in pattern effect is used throughout the first floor, with linoleum on the entire second floor. Tile for floors in bath as well as wainscot.

Plush of oak, with gray enamel on the second floors, walnut doors.

The cost is placed at \$8000 to \$10,000, exclusive of heating and plumbing.

side of Oregon that have a building record less than La Grande's so far this year follow:

Anaheim, Colton, Conpton, Coronado, Culver City, Emeryville, Eureka, Fullerton, Lynwood, Modesto, Monrovia, Montebello, National City, Ontario, Orange, Redlands, Redondo Beach, Redwood City, San Gabriel, San Rafael, Santa Cruz and Whittier, Cal.; Nampa, Ida.; Reno, Nev.; Logan, Ogden and Provo, Utah; Everett, Olympia, Walla Walla, Wenatchee and Yakima, Wash.

care must be used in seeing that they are properly mulched and that the mulch is close about the stems. Biennials, such as Canterbury bells and foxgloves, should be given a covering of dry leaves and cover them an old sack or frame covered with fur paper, as they must be both mulched and protected from wet if they are to survive, as they have to stand unprotected.

They are not difficult to grow with this precaution, but many failures result when it is not taken.

Bulbs and perennials may be planted at the same time, arranging the perennials so that ample space will remain for the bulbs, setting the roots and bulbs in position about the bed or border and then digging them in. Give the newly set perennials plenty of fertilizer in the way of pulverized sheep manure, shredded cow manure or a basis of compost from the compost heap, but keep the manure away from the bulbs.

This planting attended to this fall will be a welcome relief from the rush of work in the spring. But don't forget the mulch. Have it stacked alongside the bed in readiness for a freeze.

These girls just won't be outstripped.



The Garden

MOVING PLANTS IN THE FALL

Fall very often is the most comfortable and convenient time for remaking the garden, refurbishing the perennial planting, and getting ready for next spring. It is altogether practical to divide and replant perennials in late fall and to set out new plants from the nurseries if one precaution is taken—sufficient mulching to be applied after the ground freezes hard for the first time. The object of the mulch is to keep the ground frozen. With this mulch to equalize temperature and prevent too easy and too rapid thawing and freezing it is safe enough to go ahead with the transplanting.

A number of the perennials are benefited by frequent division, and fall is a good time to do it. The Shasta daisies often die if not divided every third year at least. Pyrethrums should always be divided every third year to be kept at their best. A few plants cannot be divided in the fall, among them the gullardias and Japanese anemones. It is best to leave the late bloomers until spring for division.

Seedlings can be transplanted in to their quarters if they are plants of substantial size, but the greatest

The Pratt Lumber Company might well be called the "House of a Thousand Bargains." When we throw the bars down and said, "Men and women walk in, we have cut and slashed the prices to the very bone." There is no use to wear out your thumbs by leaving away at the mail order catalog. There is no use of wearing out your eyes in trying to see better prices; just as well first, last and all the time, come right straight to headquarters. Next year we would like to ship in an entire carload of pure linseed oil. There is no "ifs" and "ands" about it—64 barrels of linseed oil would be sure to sell throughout this valley. We have an enormous paint trade, we get long distance calls from Pendleton, from Baker, from North Powder, Enterprise, Wallawa, from Elgin, Imbler, Union and Cove. We try to keep the paint coming in fast enough to supply large quantities on quick demand. We have kalsomine, of all kinds of shapes and color. Last, but not least, we sure do know how to brag.

Claude C. Pratt Lumber Co.
We Sell For Cash
"The Poor Man's Friend"
Near Foundry, Phone Main 848
No Sunday Business

New \$1400 Home Will Be Erected On C in Old Town

Building permits issued last week in La Grande were only two in number, but one was for a dwelling place.

The permits for the week ending Oct. 15, follow:

Oct. 15—O. L. MacDowell, to erect a dwelling place on C between Third and Fourth, to cost \$1,400.

Oct. 15—Fred Spaeth, to erect a garage on M between Second and Fourth, to cost \$200.

COVE PERSONALS

COVE (Special) — Some of the farmers are plowing now.

L. J. Chadwick threshed his grain last week. Alexander brothers of High valley, doing the work.

Harlan Koger is plowing up some alfalfa sod.

There has been no school in Frosty district No. 16 for three weeks owing to the illness of the teacher, Miss Ida Roberts. Simeon Van Schoonhoven got a deer recently which dressed 230 pounds.

America is a country where a bigamist usually is found to be merely an amnesia victim.

Electric Outlets in Your Home

Bring your home up-to-date by installing the outlets you have wanted long ago. We wire your home for lifetime service. Added wall and floor plugs are a necessity and a convenience.

See Us Today for Estimate

H. & S. Electric

Frank Robinson, Prop.
Sommer Hotel Bldg.

HOT WATER For the Bath and Laundry

Is economical and convenient with one of our LAUNDRY STOVES

Let us figure with you on an installation this fall. Phone Main 179.

Karl W. Lynch
216 1/2 Fir St.

Let Electricity Do Your Work!

Why tire yourself out? Have your home wired to do the labor for you. Extra outlets will do it. The cost of having electrical convenience is so reasonably low—have it done today!

Come in, let us give you an estimate.

Electric Service Co.
TALBOTT HELVY
Service Our Middle Name
Phone Main 124 1412 Adams

Prepare for Cold Weather!

Are you ready to stand the first attack of King Winter's forces? You will need Storm Windows and Doors to repel those cold winds. Keep your home warm and save on fuel costs by ordering now. Our estimates are reasonable.

We do Expert Cabinet Work. "A Cabinet in your home is a necessity and a convenience."

La Grande Construction and Supply Co.
Phone 428-J 1501 Madison

Do over your floors

We have a combination Stain and Varnish that covers the old scratches and worn places—and puts on a brand new finish at the same time. It is LOWE BROTHERS NEPTUNITE VARNISH STAIN. Easily applied by anyone and dries overnight. Works wonders at refinishing floors and furniture. Ask us about it.

W. H. Bohnenkamp Co.

SECURITY

In working out the design and construction of the Hart Oil Burner, the makers set as their goal the world's high mark of dependability, the kind of performance that frees you and your family completely from furnace care.

Here is a convenience surrounded by every possible safeguard. With the Hart system of interlocking controls, operation is virtually impossible unless all parts are functioning.

Endorsed as standard by Underwriters' Laboratories, Inc. Service by factory-trained men. Time payments, if desired.

Manufactured by
W. B. WILDE CO., Peoria, Illinois

NATE ZWEIFEL

HART OIL BURNER

A Warm Home Starts a Cold Day Right

A piping hot breakfast in a warm, cozy dining room. There's nothing like it on a bitter cold morning. To make rooms warm in early morning is one of the essentials of a good heating plant. To meet this demand surely, easily, and economically requires quick action, immediate response to the open draft, a full volume of healthful heat. These are just the advantages you will enjoy with a Sunbeam Warm-Air Circulating System.

And you'll find that every room in your home will be comfortably heated by fresh, moist, warm air all day long. But at the end of the month, when you figure up the cost of this better heating, you'll find that your Sunbeam has made a very worth-while saving.

Just see, phone, or write us today for full details.

SUNBEAM WARM-AIR FURNACES

Fred Spaeth

CERTAIN-TEED Gypsum Board

"This Wall Board is made from gypsum rock—in addition to being fireproof it will not warp, resists cold, heat, and deadens sound. It is quickly applied to walls and ceilings. It is cut with an ordinary hand saw. Will take any kind of decoration—wall paper, paint or panelled. Finished work is smooth, solid, lasting.

There is no waste as it is reversible board, either surface may be used.

Sizes 3/8 inches thick, 48 inches wide, 6 feet to 10 feet long.

Van Petten Lumber Company
Phone Main 732.
"Good Service Quick."