

TRAFFIC CODES LACK UNIFORMITY

Standardization Remote Over the Nation, a Survey Discloses

WASHINGTON, D. C., Aug. 27.—Despite the progress made in the promotion of a uniform motor vehicle law for the country, diversification rather than standardization is still the rule as far as traffic regulation and control in the large cities of the nation are concerned.

This—coupled with the conclusion that from all appearances standardization of city traffic regulations is still on the far horizon of the future—is the outstanding deduction from a survey recently completed by the American Automobile association. This survey was based on an exhaustive questionnaire sent to key cities in every section of the country.

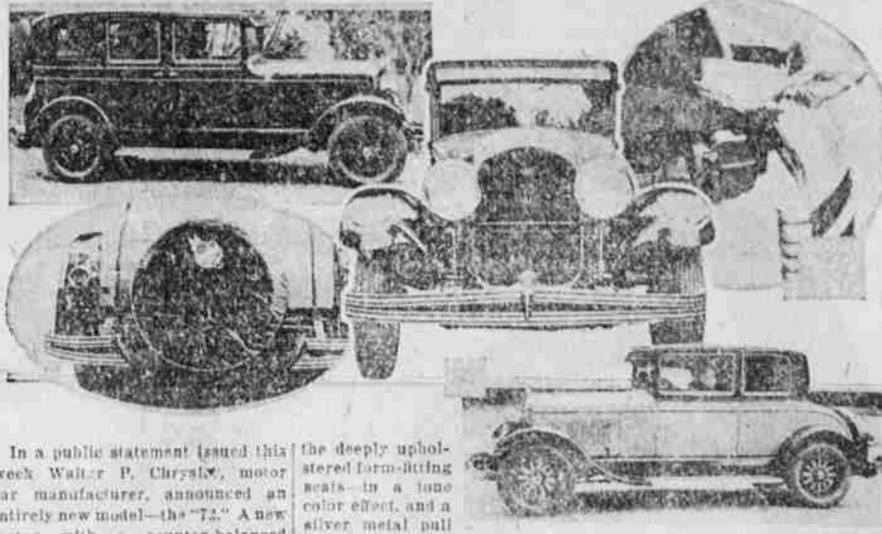
card systems, penalties for traffic violations, special traffic courts, use of the streets by contractors, and kindred matters related to flow of traffic.

Views Vary Widely Another important fact developed by the questionnaire was that regulations tried and proven effective by one city were often discarded as worthless, if not hazardous, by other communities where conditions were more or less comparable. Indicating, it is believed, that even expert traffic engineers hold widely diverse views on some common problems. The A. A. A. summary of the survey follows:

First—Right-and-left hand turns are more or less of a local problem, the general consensus being in favor of the abolition of the left-hand turn, while particular emphasis is laid on the danger of the left-hand turn in congested districts and on arterial highways.

Parking Regulations Studied Third—Parking is largely subject to local conditions, the tendency being toward the prohibition of parking in very congested districts and the placing of a maximum limit of two hours in downtown sections.

CHRYSLER "72" EMBODIES NEW FEATURES



In a public statement issued this week Walter P. Chrysler, motor car manufacturer, announced an entirely new model—the "72." A new motor with a counter-balanced crankshaft, a larger bore and stroke, which produces 75 horsepower and is capable of maintaining a speed of 72 miles or more per hour is the outstanding feature. Ten inches have been added to the length of the frame, which gives the new car an appearance that was not found in the old models. Great care has been shown in the selection of interior decorations and fittings. Beautiful mohair covers

the deeply upholstered form-fitting seats—in a tone color effect, and a silver metal pull that is a part of the arm rest adds to the complete comfort found in the new car. The picture in the upper left corner is that of the new Crown sedan—in the lower right corner is the new four-passenger coupe, which is one of the most striking models of the "72" line. (Center) is a head-on view of the new Chrysler radiator and the new full drum type headlights mounted on nickel-plated posts. The picture in the upper

corner shows the housing which covers the blocks of live rubber in which all the spring shackles are set. This feature greatly improves the riding qualities of the car. The lower left corner shows a picture of the new factory-built bumper, which has been designed not only to protect the rear end of the car, but to improve appearance by following the lines of the spare tire.

Billboards And Hot-Dog Stands Less In Number

The state motor association points out that almost unnoticed a reform is taking place in the elimination of billboards and hot-dog stands from Oregon highways.

Some about the acquiring of these properties quietly and unobtrusively, and while others have complained of the nuisance along the highways, the commission has sought to correct the evil by requiring the property rights to be secured in specific sections.

Every motorist in the state of Oregon approves of this action of the commission as it retains for posterity the same beauties of nature that the present day motorist enjoys.

BERLIN—Falls here now realize there's something in these stories of Mayor Walker being tardy for engagements in England and Ireland. He was only half an hour late for the American club banquet.

New Hand Signal For Night Driver

A hand signal for use in night driving, which is said to be fool-proof, in that it does not depend on reflectors or wires for its illumination, has recently been placed on the market.

The device consists of diamond cut ruby glass placed over a small mirror. This is attached to a flattened leather strap and is worn on the left wrist as a wrist watch. When the hand signal is given at night the rays from the light of the automobile approaching from the front or rear are picked up by the mirror and thrown back through the glass, making a red flash.

\$875

TWO-DOOR SEDAN BODY BY FISHER

WORTH MORE

COMPARE AND SEE

You will never know what an amazing value Oldsmobile offers at its new low price, till you see and drive this car.



Only then can you compare the effects of the refreshing new Duco colors.

Only then can you realize the swift acceleration.

Only then can you know the qualities that lift this value far above even its now familiar new smartness.

flowing power and effortless control of its thrilling, smoother performance.

Only then can you appreciate the richness, the comforts, the conveniences that make up the new luxury of its Fisher Bodies.

Then—and only then—can you know the plain truth that Oldsmobile today is worth far more than its new lower prices. Come in—compare and see.

OLDSMOBILE SALES CO. 1428 Adams Ave.

OLDSMOBILE

PRODUCT OF GENERAL MOTORS

SEE THE NEW MODELS

BUICK

OFFERS

For 1928

NOW ON DISPLAY

Jennings & Shumate



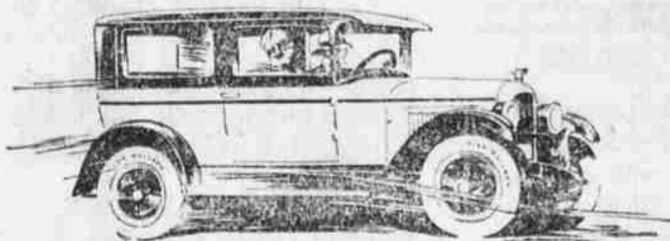
Yes, We Can Fix Your Tires!

Our modern facilities and expert workmanship enable us to repair your tires and tubes to hold up for many miles.

Bring your tire troubles here—we guarantee our work.

JOHNS BROS. Tire Shop and Filling Station 1517 Adams

Today's trend shows Whippet's tremendous influence



Public Preference Has Swung to this Modern Light Car of Proved Superiority

With more than 120,000 Whippets in the hands of enthusiastic owners, and the popularity of this modern car increasing everywhere, other makers now must follow Whippet's lead.

Whippet set a wholly new standard of economy and introduced such big car features into the light car field as 4-wheel brakes, lower center of gravity, higher speed, increased roominess and force-feed lubrication.

Even a short ride in a Whippet will demonstrate the car's remarkable qualities—flashing acceleration, great power on hills, high speed, easy riding, convenient handling and increased safety.

Superior Quality—New Prices

Table with 4 columns: Whippet, Whippet #, Coupe, Whippet #. Rows include Coach, Touring, and Roadster models with their respective prices.

Prices in U. S. factory and specifications subject to change without notice. Whippet-Overland, Inc., Toledo, Ohio

Whippet

GETTINGS & HANKS Corner First and Jefferson

with proper forethought, and where signals are obeyed. This is regarded as one of the prime factors in solving future problems.

Trucks Are Restricted Ninth—The movement of trucks and freight on the streets has received scant attention to date, but there is a definite trend to restrict the handling of freight until after midnight.

Tenth—Contractors' use of streets constitutes almost every where a very vexing problem, but this is one which could be easily remedied by restrictive regulations.

Eleventh—Permanent improvement which is the most important field, from the standpoint of the future, is receiving very little attention since only a few cities in the country are really planning to meet future requirements.

Twelfth—The grade crossing situation shows a distinct tendency toward elimination of grades, and there is a growing recognition of the need of tunnels for pedestrian traffic, where congestion is very bad.

Thirteenth—Street widening is impeded by cost and protests of abutting property owners.

Fourteenth—In the case of street cars—a necessary impediment to modern vehicular traffic—the best results are being obtained by re-routing, adoption of loading platforms and placing of downtown terminals for loading and unloading in parks away from vehicular traffic.

NEWPORT, R. I.—When a Vanderbilt gives a bill, there are elaborate preparations. Three hundred small pine trees were planted on the lawn of the estate of Mrs. P. C. Church Jr. (Martha Vanderbilt) which decorated with colored lights. A special ball room was constructed covered with oak leaves. Fifty lighted overhanging baskets of flowers were suspended from the ceiling.

STILL STUDYIN'



(NEWS, Atlanta Journal) Although J. Milton Jones is 73 and is one of North Carolina's oldest educators, he feels himself still young enough to learn. He has attended summer school at the University of North Carolina since at Chapel Hill where this photo was taken.

FIRM ANNOUNCES NEW TRUCK LINE

Graham Brothers Introduce 6-Cylinder Model—Fast, Economical

Graham Brothers, the truck division of Dodge Brothers Inc., today introduces a complete new line of trucks, the feature of which is a fast and powerful six cylinder two-ton chassis available in three types.

Introduction of the six cylinder truck and the improvements in the present line of four and three-fourths, one and one and one-half ton capacities constitute a notable step forward in truck design which should aid materially in speeding up traffic and lowering commercial transportation costs.

The quick acceleration and braking and the fast economical service on the open road of these new trucks is comparable to that of the fine passenger car, while the qualities of rugged strength and dependability for which Graham Brothers trucks have always been noted are retained. A four forward speed transmission in the new two-ton chassis assures superior pulling ability for emergencies and makes possible moderate engine speeds for fast load starting. The recently introduced new four-cylinder engine in the lighter capacity models also has the advantage of moderate speed in fast service. Thus speed and economy are both served.

Four features of the new six cylinder truck are particularly important and warrant detailed description. They are the engine, a four-speed heavy duty transmission, four-wheel hydraulic brakes and remarkably low prices.

The design of the six-cylinder engine is inherently consistent with Dodge Brothers reputation for building for accountability and stamina. The water-bearing crankshaft alone is an important feature for the rugged service demanded in motor truck operation. It weighs 42 pounds and is machined all over. The connecting rods of chrome-vanadium steel and pistons of light alloy give the strength and snap desired in the modern motor truck. Modifications in the manifold, elimination of the thermobarometer control and the intake heat regulator controlled from the driver's seat, which are used in the Dodge Brothers six-cylinder passenger car, together with the use of a special carburetor jet and a special truck type fan, have been slight changes to adapt this remarkable engine to truck service.

The use of the engine provides ample power and speed to meet the demands for fast travel and pulling ability. A heavy duty transmission with four speeds forward and two reverse contributes greatly to this truck's ability to perform under the most difficult road conditions. The first speed ratio is 6% to 1, resulting in approximately 40 per cent increase in pulling ability compared with the first gear position of the three speed transmission formerly used on two ton models.

OVERCOME OBSTACLES NEW YORK—After studying all available Lenny Chadbourne, wealthy lawyer's adopted son and his wife, the famous Olive Storer, one of the most beautiful girls in society are on their honeymoon. The wedding was postponed last May because of her illness. And the ceremony yesterday was an hour late because the bridegroom forgot his keys. He had to show 13 blocks to a taxi for it.

Longbeach has been made a policeman in Chicago. One who had the honor of being a cop in that city.