

PARKS DOT ROAD ACROSS COUNTRY

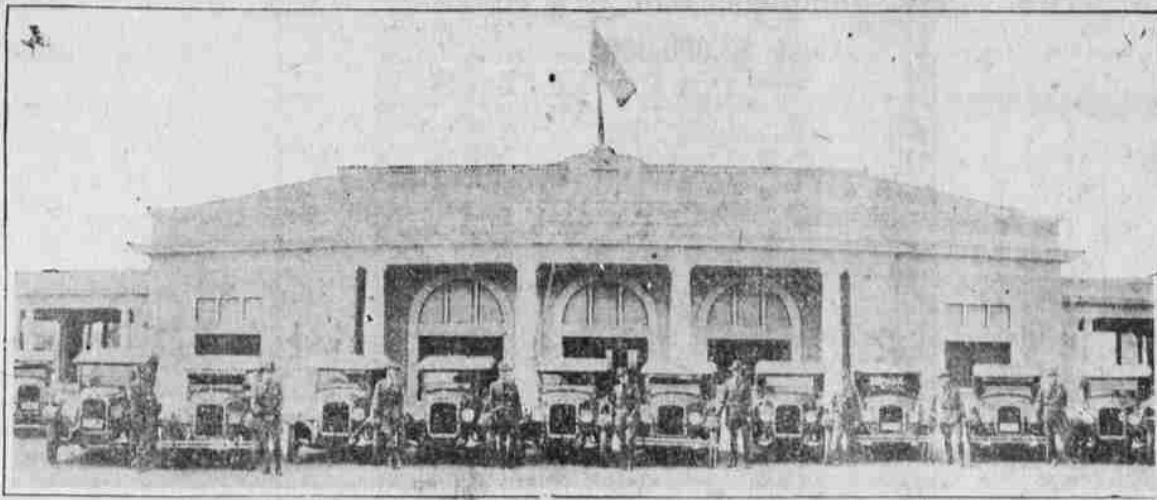
Tourists Easily View the Scenic Sections En Route East or West

WASHINGTON (AP)—The motorist who packs his wife and children into the family car each summer and sets out along vacation trails will be able within a few years to drive from coast to coast with a different state park for a complete every night.

The prospect is held out by the National Conference on State Parks, which finds that already a tourist starting by motor car from Houston may journey all the way to Minnesota, Iowa or Kansas with a stop almost every night in a state park along the way.

Thus far the east and the middle west have led in the establishment of such parks, but with the automobile contributing every day to

UNCLE SAM USES STAR CARS FOR BORDER PATROL DUTY



Down on the Mexican border a large fleet of Star cars is operated by the United States immigration service border patrol. This photo shows 11 of the 28 Star cars in this fleet of Uncle Sam's lined up in front of the U. S. I. S. border patrol headquarters near the border city of Nogales.

NEW HIGHWAY TO BE OPENED SOON

Road from Wendell to Jerome, Ida., Rapidly Nearing Completion

WENDELL, Ida., Aug. 6.—The new stretch of north side highway between Wendell and Jerome, which has been under construction since last fall by Duffy Road, Twin Falls contractor, will be opened to traffic the last of this week, it is reported here.

All the siphon and culvert work is reported to be virtually completed and the last major concrete bridge, which was built near the Appleton school house, will soon have been finished for the 28-day period required by law and by the latter part of the week be ready for public use.

Government engineers are expected here shortly to inspect the new road before its acceptance by the state highway department. The surface of the new road is still loose but it is believed that the first thorough rain will cement it into first class condition.

Opening of the new road to the public will eliminate the last stretch of unimproved highway on the north side between Boise and Pocatello and at the same time create a highway easement of long standing in Gooding county.

The new road is eight and one-half miles in length, extending from the Hastings corner north of Wendell to the Appleton school house near the Jerome-Gooding county line. It connects with the gravelled highway from Gooding on one end and with a similar highway from Jerome on the other, and passing through one of the most productive farming areas on the north side.

Therefore, shock absorbers generally are designed to check this upward rebound. Both pneumatic and hydraulic shock absorbers cushion the downward motion by the compression, and then check the rebound by the slow expansion of the air or oil, due to the almost total exclusion of the outer air in the first place, and to the viscosity of the oil in the second.

Signs For Tourists

MOULAIN, France (AP)—Luminous signs for automobiles are being placed at the principal corners here to simplify tourist traffic. The signs are electrically lighted boxes five feet long and two feet high, hung 20 feet overhead at intersections.

Pendleton's New Traffic Law Is Now In Effect

PENDLETON, Aug. 6.—The new city traffic ordinance, which passed two weeks ago by the council, will be enforced starting today.

Dean Tatom, chairman of the police committee, and Tom Gurdane, chief of police, announced.

"Traffic signs and proper markings on the streets have been made," Mr. Tatom said "and the public has had sufficient time in which to become familiar with the terms of the ordinance. We do not wish to work a hardship on anyone, but the ordinance will be enforced."

Frank Hutton, newly appointed traffic officer, has been instructing motorists for the past two weeks, and fewer "U" turns on Main street and more parking spaces have already shown the advantages of the new ordinance.

Signs showing the parking limit are displayed on each street coming under the ordinance and

the signs on the pavement indicate angle or parallel parking. The main provision in the ordinance include a one hour parking limit in the business district, no double parking, except where loading or unloading is being done and a driver is at the wheel and no reverse or "U" turns on Main street.

The warm summer, long trips and race atmosphere we meet on a mountain voyage, require the adjustment of the carburetor for a lean mixture of less fuel and more air.

The obvious evidence of a rich mixture is black smoke issuing from the exhaust.

Another indication is the slowing water in the radiator and loss throttle is wide open, and its speeding up when it is partly closed.

Also, if the auxiliary air valve of the carburetor is opened, the engine will speed up. And when idling, the engine will gallop rather than run smoothly.

The rich mixture on which the car has been running over the winter, won't do for summer.

WATCH THE OIL

During this extreme warm weather it will pay every motorist to keep a close check on the oil in the crankcase. Naturally it will thin out more readily than in cold weather and will leak out easier.

Texaco Is Golden

But does stand up well in all sorts of temperature changes. Many cars are driven to this station for a regular change of oil. If you are not sure—don't delay but drive up—we'll check up the oil—and if you need a refilling we suggest you try some of this golden motor oil that is sold the country over under one name—

TEXACO

Heasty & George

Corner Adams and Second

Service--

You will know the full meaning of the word "Service" when you fill up your car at Clay's.

Texaco Gas
Fisk Tires
Accessories

Clay's Place
East Adams

the patronage of such recreation spots, the conference foresees in the near future a string of state playgrounds and beauty spots, 100 to 200 miles apart, from Maine to California and from the state of Washington to Florida.

Some of the parks set aside by states represent the best of the commonwealth's scenic spots or the richest in historic interest.

The beautiful Palisades Interstate park of New York, the Natural Bridge of Kentucky, the 95,000-acre northern forest park of Wisconsin, the famed Lake Umbagog of Maine, the Black Hills state park in South Dakota and the chain of state parks in Indiana, stretching from the weird sand dunes on the north to the bluffs of the Ohio river on the south, embrace natural wonders of national note.

Most of the state parks have been developed on land purchased by the state. Many of them, however, have been made possible by gifts of purchase money by citizens, or by leasing of lands to the state for park use.

In that event the engine may be run at an average speed with the spark slightly retarded. The car should be stopped and the adjustment screws in the carburetor turned until there is popping in the carburetor. The screw should be turned back slightly and the car driven again.

Flora Road In Best Condition In Its History—Is Near Completion

ENTERPRISE, Ore., Aug. 6.—The Flora road is now in the best condition it has ever been since the county was settled, even with ten miles of unfinished grade. It is reported that the highway will be an accomplished fact as far as Appleton, and perhaps farther.

For 25 miles, from Enterprise to Red Fir, the state and forest highway is a splendid road. The lower seven miles, surfaced last year, is perfect and the next seven miles is in excellent condition. Then comes the forest road of more than 13 miles, which is smoother than in any previous summer. It has gradually widened with use but is still too narrow, especially on Snow hill and on occasional fills in the forest. There are many curves where the vision is limited and drivers must use caution.

Dirt Road Is Smooth
From Red Fir north the county has run a heavy scraper over the old dirt road, cutting off the bumps and filling the hollows and widening the travel track. Although the road is dusty it is surprisingly smooth, better than ever before in memory.

At the lookout point, where the road runs along the brink of Joseph creek canyon, with a wondrous

view of this great cleft and of the ridged and timbered hills far and near, travelers are permitted to enter the new highway grade. This is surprisingly smooth and free from chuck holes and rocks.

Near Appleton there is a turnout for Flora, for the traveler can continue on north a few miles over a grade which is not wholly finished.

A few miles north of Red Fir, Joseph & McAllister, who have the contract for surfacing the 10 miles of new grade, have located their quarry and are about ready to go to work. They will begin at the south end at the connection with the old forest highway. They took a huge Diesel gasoline engine to the quarry last Friday to run the crusher.

The contractors have a big job on hand to finish the 10 miles of grade in the three months of open season remaining this fall. It is recognized that they have plenty of equipment and they can work night and day, so it is possible that they can complete the contract before winter comes. The Flora highway will be a premier scenic attraction of the future, with its long course thru the timber and the varied and wonderful views both from the road and from points easily reached by it.

Walla Walla To Easton Road Is To Get Oiling

OLYMPIA, Aug. 6.—(AP)—Expenditure of \$50,000 for oiling sections of the Sunset and Inland Empire highways between the general terminals of Eastern and Walla Walla has been authorized by the state highway committee.

The oiling to be done was recommended by the district engineers, subject to the direction of the state highway engineer.

The committee also approved construction of a guard rail on the canyon road between Ellensburg and Yakima at an estimated cost of \$18,325. The work is to be done by force account. The improvement, declared necessary as a safety measure, will include some grading to raise the super-elevation on the curves.

Signs For Tourists

MOULAIN, France (AP)—Luminous signs for automobiles are being placed at the principal corners here to simplify tourist traffic. The signs are electrically lighted boxes five feet long and two feet high, hung 20 feet overhead at intersections.

Loon Lake Road Contract Is Let

ROSEBURG, Aug. 6 (AP)—The contract for the construction of the Loon Lake road was let by the county court Aug. 4, to the firm of Rostrom and Norstrom, Portland, Ore. The bid was in the sum of \$72,120.80. The bid was approximately \$4,000 lower than the best proposal received last month when the court rejected all bids and readvertised the project. There were three very close bids. Avery, Brown and Avery, of Hoodport, bidding \$71,929.75, and Haines and Colby of Roseburg \$72,120.80. The other bids were received one from E. J. Korman, Hoodport, whose proposal was in the sum of \$75,622.35 and the other from Hildebrand and Catehing, Roseburg, \$73,395.02.

The Loon lake road is being built on Mill track, connecting with the Emporia highway between Hoodport and Roseburg. It serves a large and prosperous agricultural community which is now isolated nearly six months out of each year.

The coolest fabrics are those which allow the most rapid passage of air and perspiration vapor through them. In tests conducted by the United States Bureau of Standards a sample of the cloth is clamped on the end of a cylinder, into which air is pumped. A gas meter measures the quantity of air escaping through the fabric in a certain length of time.

A retired railroad locomotive, with its wheels removed, heats a Newcomb, compressed, gas-air station. It performs efficiently, supplying heat to the train shed, station and cars in the yard as required.

OLDS HEAD

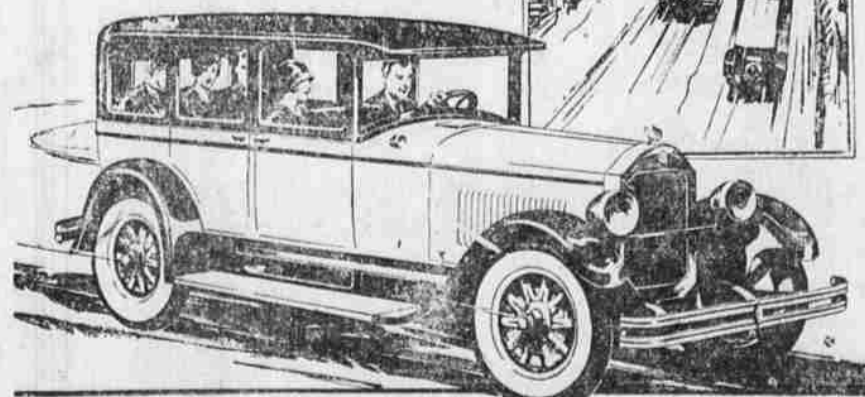
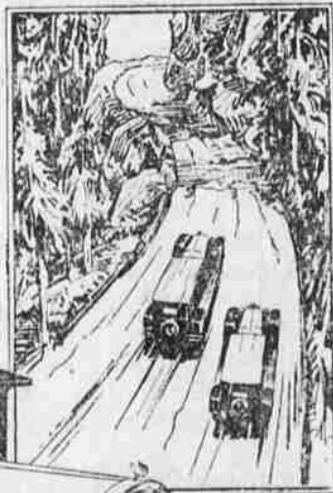


J. J. Reuter, president and general manager, Olds Motor Works

Star Car OWNERS DELIGHT

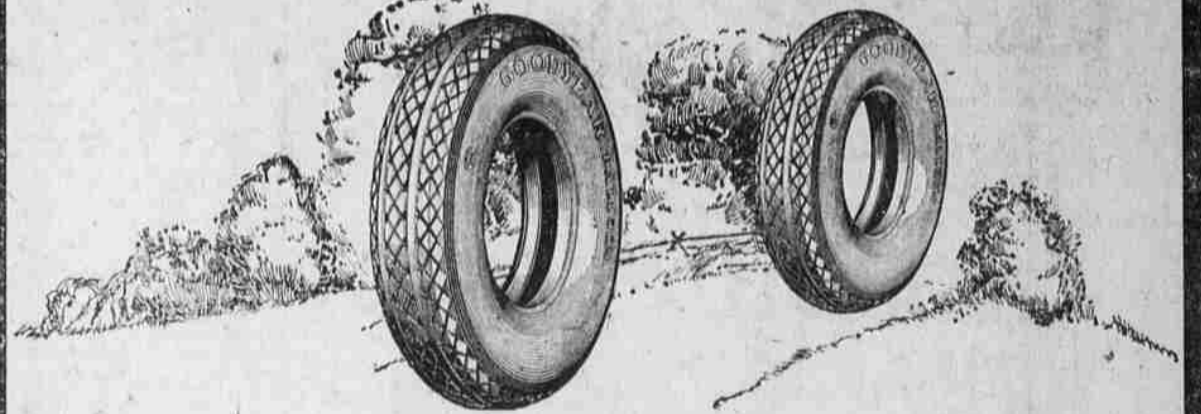
in passing all other makes of cars, regardless of price, on the steepest mountain grades

ON the road to Lake Tahoe and the High Sierras, over the Siskiyou, through the Cascades, along the Ridge Route, up the slopes of the Tehachapis—anywhere you may go on your vacation you will see Star Cars "outperforming them all." The famous Red Seal Continental Motor gives the Star Four and Star Six power on the hills, speed on the level, and flexibility in traffic.



MORELOCK-SERVICE AUTO CO.
1111 ADAMS AVE.

INCOMPARABLE TIRE EQUIPMENT



Goodyear All-Weather Treads

Some folks imagine Goodyear Tires are high priced—because they've never used them. Some folks go right on buying and riding on inferior tire equipment when they could be enjoying Goodyear advantages at a lower yearly tire cost than they are now paying.

Goodyear Tires are nationally known for quality and dependability. The Cords and Balloons are built with SUPERTWIST, which gives them extra resiliency and riding comfort. Goodyear Tires have the famous, road gripping All Weather Tread.

Our stocks are complete. Our prices are RIGHT. Balloons, Straight Sides, Clinchers—with Tubes to match. We'll save you tire money if you buy Goodyears from us.

W. H. Bohnenkamp Co.

Superior Hardware