

Men's Suit Values!



Advanced Fall Showing

Of two and three-button single-breasted coats with clover leaf lapels... distinctive tailoring in a select array of attractive fabrics, shades and patterns... the very latest in advanced Fall showing.

\$33

(EXTRA TROUSERS \$6.50)

Westenhaver & Gilbert
The Store For Men

BERRY PRICE IS RUNNING HIGHER

Hot Sun Cause of Some Crop Damage—Tomatoes Plentiful, Lower

PORTLAND, Ore., July 27 (AP)—All lines of berries show signs of strengthening prices on the local market due to considerable crop damage by the hot sun. Berries are drying on the vines to an alarming extent; receipts are light and current prices are firm for all varieties.

Other fruits, such as peaches, pears and plums are replacing berries on the market to a large extent. To retail trade, freestone peaches are selling for 20 and 24 per dozen and Bartlett pears are the best choice. Plums are 10c per dozen.

Thousands of line varieties are numerous and rather in price. The fall 20-pound boxes are around 45c. At retail, only the best quality selected lots will for 1 1/2 per pound, while full grades will down to 10c.

Butter and egg prices are generally firm today on the daily exchange. A half cent gain for prime first and first grades of butter to 24 1/2 and 24 1/2, respectively, are the only changes.

Trade in wholesale meats and poultry was quiet this morning with an over-abundance of light hams. Veal is a little easier at around 18c, while hogs are firm with local selling for 16c.

Wheat Heavy And Lower At Close

CHICAGO, July 27 (AP)—Opening unchanged to 5c higher, wheat underwent something of a tug but later secured gains. Open developed independent strength, starting unchanged to 1/2 up and subsequently showing a decided general advance. Oats were easy. Provisions held steady.

PORTLAND PRODUCE

PORTLAND, Ore., July 27 (AP)—Butter—Prime firsts and firsts 24 1/2. Extra firsts, city, 24c. Standard 20lb. prime firsts, 23 1/2. Grade 24 1/2. Creamery, prime firsts 24 1/2. Choice extra standard, butterfat 40c. J. G. Portland. Eggs—Steady. Current receipts 25c. Fresh standard 25c. Fresh standard extra 26c. Hides in tanner. Milk steady. Raw milk (4 per cent), 22 1/2. C. & B. Portland. Butterfat (C. & B. Portland). Potatoes steady. Heavy best 2 1/2. Light, 2 1/2. Extra light, 2 1/2. Sprouting, 2 1/2. Medium, 2 1/2. Small, 2 1/2. Potatoes steady. Total, 22 1/2.

MARKET NEWS OF THE DAY

Wheat	Open	High	Low	Close
July	142 1/2 @ 142 1/2	142 1/2	140 1/2	140 1/2 @ 140 1/2
Sept.	140 1/2 @ 140 1/2	140 1/2	138 1/2	139 @ 139 1/2
Dec.	142 1/2 @ 141	141 1/2	142 1/2	142 1/2 @ 142 1/2

LIVERPOOL WHEAT

LIVERPOOL, July 27 (AP)—Wheat 1/2 to 1/4 higher; July 11s. 3/4; Oct. 11s. 1/4; Dec. 11s. 3/4; March 11s. 3/4; May 10s. 3/4.

PORTLAND WHEAT

PORTLAND, Ore., July 27 (AP)—Wheat—BHB hard white, \$1.72; hard white bluestem, hard, 1.60; soft white, western white, 1.51 1/2; hard winter, 1.57; northern spring, 1.57 1/2; western red, 1.52.

Today's car receipts—Wheat, 44; flour, 3; corn, 1; hay, 1.

CHICAGO CASH

CHICAGO, July 27 (AP)—Wheat—No. 2 red, \$1.49 1/2; No. 2 hard, \$1.49 1/2; No. 2 mixed, \$1.49 1/2; No. 2 yellow, \$1.49 1/2; No. 2 white, \$1.49 1/2; No. 2 soft, \$1.49 1/2.

PORTLAND LIVESTOCK

PORTLAND, Ore., July 27 (AP)—Hogs and calves—Steer market demoralized, practically nothing done on cattle steers 30 to 35c lower for week. Receipts, entire lot cars 2. Steers, 300 to 1100 lbs., good, \$5.15 to \$5.40; do, 1000 to 1200 lbs., good, \$5.00 to \$5.20; do, medium, 800 lbs. up, \$4.80 to \$5.00; steers, fed calves and yearlings, 750 to 850 lbs., good, \$4.80 to \$5.00; others unchanged.

Hogs, sheep and lambs steady and unchanged. No receipts.

LA GRANDE WHOLESALE MARKETS

Poultry (live weights). Heavy hens—22c lb. Light hens—14 @ 16c lb. Stags—3c lb.

Flour. Hard Federation (hard wheat) \$7.80 bbl. Soft wheat—\$7.40 bbl.

LA GRANDE RETAIL MARKETS

Butter, creamery—56 @ 58c. Eggs—20c doz. 2 for 35c. Honey, com—25c lb.

Vegetables. New potatoes—1 bu. 25c. String beans—1 bu. 25c. Green peas—3 bu. 25c. Tomatoes—1 bu. 25c. Cabbages—5c lb. Wax onions—2 bu. 25c. Lettuce—1 bu. head. Celery—25c bunch. Cucumber—1 bu. each. French carrots—2 for 15c. Bunch beets—2 for 15c. Bunch turnips—2 for 25c. Green onions—3 for 10c. Yellow onions—3 bu. 25c. Radishes—1c bunch. Green peppers—2 bu. 25c.

Fruits. Raspberries—2 for 25c. Loganberries—1 bu. 25c. Blackberries—4 boxes 25c. 1 1/2 cherries—1 bu. 25c. Strawberries—2 for 25c. Cherries—2 bu. 25c. New apples—3 bu. 25c. Bananas—1 bu. 25c. Lemons—5c doz. Oranges—5c doz. Watermelons—2 for 25c. Watermelons, 3c lb. Honeydew melons—1c lb. Peaches—2 bu. 25c. Apples—2 bu. 25c. Cabbages—5c lb. Drapes—25c lb.

Sugar. Cane sugar—17.15 @ 17.24. Flour. Soft wheat—\$8.20 bbl. Hard Federation—\$8.20 bbl.

MEATS AND FISH

Beef—1 1/2 @ 1 1/2c. Pork and hams—2 1/2 @ 3c. Sausages (city)—25c lb. Ballou—25c lb.

Gasoline. Gasoline, regular, 17c gal.

General Motors And U. S. Steel In High Ground

NEW YORK, July 27 (AP)—Responding to the excellent half-yearly reports of the country's two leading industrial corporations, General Motors and U. S. Steel, stock prices surged upward to new high ground today under heavy buying for both accounts. Daily gains ran from 1 to 2 points, with more than a score issues at new peak prices.

General Motors, which earned \$14.75 a share in the first six months of the year, was in the forefront of the advance, attaining a new peak of 227 for the present week. U. S. Steel of which Dupont interests are reported to have been heavy buyers in the last few months, also moved up to the highest price since the distribution of the stock dividend. Dupont reached new high ground above 27 1/2 shares.

Nash Motors climbed 4 points to a new peak and Chrysler and Mack Trucks each climbed more than 2 points. Pierce-Arrow preferred sank 1/2 a new low level. Weakness cropped out in a few issues. U. S. East Iron Pipe broke more than 4 points and then rallied slightly and Houston, Colorado Fuel and Lignite and Myers "B" sank 1 to 2 1/2 points. Baldwin Locomotive moved up 2 points to a record high for all time.

Several stocks continued to move into new high territory, including Radio, General Electric, Atlantic Coast Line and Pullman. Total sales, \$34,021,000, a 140,000 share.

NEW YORK FRUIT

NEW YORK, July 27 (AP)—Local fruit steady, unchanged.



MAKING TOPSY and Eva famous has been the successful work of these two little ladies, the Duncan sisters. But soon their work will be to make their husbands happy, for they're to be married soon. Vivian is shown above and Rosetta below.

Success of Big Fruit Merger In South in Doubt

SAN JOSE, Cal., July 27 (AP)—Success of the California cooperative fruit merger, embracing 24 packers, the California Fruit and Apriest Growers' association and the newly organized joint packers' association, the former publisher looked dubious early today, with thousands of acres yet to be signed into the pool to receive its operation, campaign headquarters here reported.

Efforts were being made today to bring the total acreage required to bring the minimum required by this date to comply with the pending growers' agreement. A total of 83,000 acres must be signed by Aug. 31 in order to complete 90 per cent of the state program.

The Washington Clearing House association, cited approval of the merger by headquarters here and pledged its support to the campaign.

\$1.50 Daily Held Sufficient For Employees' Feed

SALISBURY, Ore., July 27 (AP)—Declaring that \$1.50 a day or 30 cents a meal is enough for the state to pay in the board of its public servants and that eight cents a mile is an excessive charge for traveling expenses and that when a public officer travels on public expense he should be charged no more than actual and necessary expenses and the amount of expenses in such cases to be audited by the state auditor, Chief Justice L. H. McMath today issued an order requiring employees of the banking department to return to the bank money expended in excess of that amount in the liquidation of affairs of the defunct Oregon State bank of Jefferson in this county.

The order directs Deputy Guy S. Beckwith to return \$1,242.00 of money expended for meals, the order stating that he is entitled to 80 cents each for four meals and that 20c per mile is sufficient for a public official's expenses when on public duty.

Judge McMath also orders Deputy Roy Nelson of the banking department to return \$113.00 which he states is in excess of the sum of

HARVEST SPECIALS AT THE OREGON HARDWARE

Japan White CUPS & SAUCERS Special 10c each

WATER SETS 2 qt. water pitcher and 6 tumblers Special 89c

WATER TUMBLERS Special 5c each

Auburn Electric Hot Plates, two-element plates, Special \$4.95

TRY The Oregon Hardware FIRST

Medford Pears Go To Local Canneries

MEDFORD, Ore., July 27 (AP)—According to local fruit brokers, half of the Valley Bartlett pear crop about 5,000 tons, has been contracted for by canneries at a price averaging about 75c per box. Recently 2,500 tons of Bartlett pears were sold to Day Bros. and Day Making of Salem, and nearly all the remaining contracts with Oregon firms. To date the California canners have not met the Oregon price, according to the local fruit brokers, and practically no Bartlett pears have been sold in that state, at least as far as is determined.

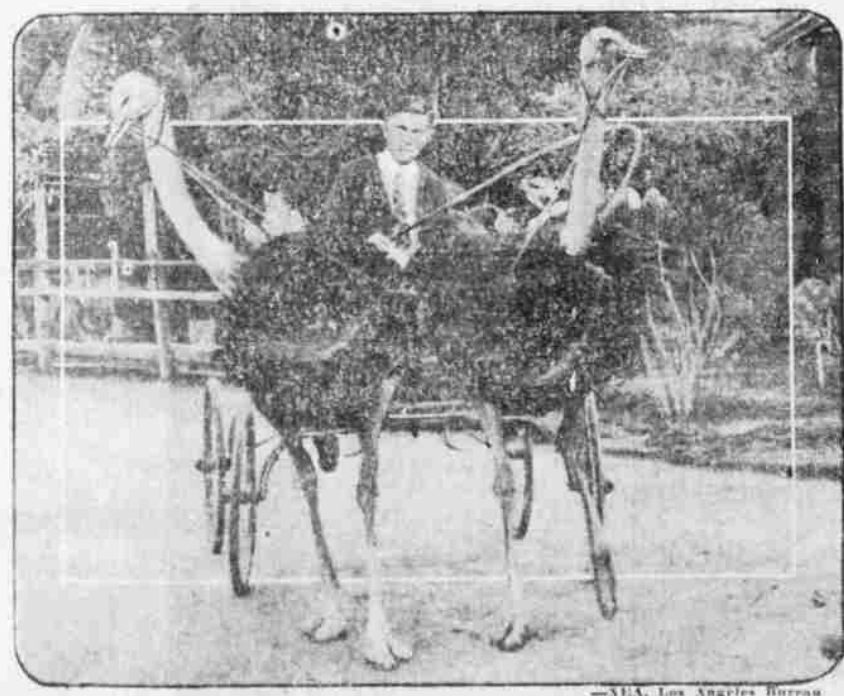
10 Years Ago Today

PETROGLYPHS—Noble E. Loring, a postpaid operator and taxman spy was arrested today.

Changes

Every day we have our ups and downs. Today our feet hurt like needles, but tomorrow—what a relief! Last night we used SAN-FOX FOOT BATH TABLETS AND POWDER. Just like a cool shower on your poor old feet.

L. & L. Drug Co.



WHO'D WASTE A MOTOR CAR if he had a pair of plumed steeds like these? C. L. Rybee drives them regularly about the famous ostrich farm near Los Angeles. He says they're just as dependable as they are swift. But he always has to thank them for the buggy ride by giving them a couple of oranges.

FIND IT HERE

Copy for this column must be in by 9 a. m.

COLD DRINK SETS Special this week at Richardson's Art and Gift Shop, new cold drink and ice tea sets at \$1.99 and \$2.99 this week. Take advantage of this offer. 7-25-27

Take home a jar of A & W Root Beer. 7-25-27

FARM LOANS: LOWEST RATES SCHOOL FUNDS also available. H. E. DIXON, Foley Building, LA GRANDE, ORE. 2-13-27

PICTURES OF WALLOWA You are invited to see the collection of beautiful Wallowa Scenery Views at Richardson's Art Shop. Over 50 different subjects and sizes of pictures of the wonderful country will be found in this collection. 7-25-27

Tray service at A & W Root Beer Stand. 7-25-27

Re-stitching, pleating, button holes, etc. Norton's Kiddy Shop. 10-14-27

Testimonial for our Eucalypti Prescription! "Silverthorn-Wright" "I had enclosed one dollar for bottle of your eucalypti prescription. I got it for trouble on my head. It has done wonders for me and I want another bottle, having used two bottles." "E. Swigler, Eugene, Ore." 7-25-27

Drink A & W Root Beer—It's different. 7-25-27

If you feel all run down and low, try a \$1.00 bottle of our nerve tonic. It acts quickly, increases appetite and gives you vigor. Silverthorn-Wright's family drug store. 7-25-27

Some extra values on boxes of Fine Stationery for one week, 40c for all 75c values. Silverthorn-Wright's family drug store. 7-25-27

NOTICE TO CREDITORS In the County Court of Union County, Oregon. By all persons having claims against the estate of Sarah J. Kuhn, deceased, are notified that the undersigned has been appointed administrator of the said decedent and that such claims should be presented by the above named party, and that such claims should be presented, duly verified, to the undersigned at her home in Island City, or at the law office of J. S. Higgins, in La Grande, Union county, Oregon, within six months from the first publication of this notice, which is on the 6th day of July, 1927. VIOLA M. WADE, Administrator. Island City, Oregon. July 8-12-27-Aug. 5.

CHICAGO LIVESTOCK CHICAGO, July 27 (AP)—U. S. Department of Agriculture.—Hogs—20,000; uneven, 10 to 20c lower than Tuesday's average; head decline on finished light weight hogs; spots 25 to the lower on medium to good 150 to 175 lb. weights, top, 410-50. Cattle—12,000; fed steers steady; grassy work; also stock and bullocks steady to 25c lower; vealers steady; strictly choice weighty steers, 112.50; 1150 lb. averages, 112.00; 14.00; yearling heifers up to 112.75. Sheep—14,000; fairly active; generally steady with Tuesday's; natives to increased supply; early bulk, 112.50 @ 12.50; best head above \$14.00; good Idaho, heavy, \$14.00; best westerns, head above \$14.00; full lamb strong, total, \$15.00 @ 16.00; desirable weight fat ewes, \$4.00 @ 5.00; asking around \$12.50 for choice 6-ding lambs; both Tuesday's better grade feeders, \$12.00 @ 12.50.

BUTTERFAT SAN FRANCISCO, July 27 (AP)—Butterfat U. S. 80c; Francisco, 45 1/2 @ 46c.

Chocolate that appears white on the outside has been kept in an overwarm place, so that some of the fat has melted and come to the surface. It is not injured in any way for use.

J.C. PENNEY Co.

108 Depot St. La Grande, Ore.

25th Anniversary

Men's Athletic Union Suits

Best quality 72x80 nainsook full cut, well made and well trimmed. One of our exceptional values at the low price of 49c

It is claimed that huge sums are made to pay, but no satisfactory way has yet been found for making the road look any for the days they do.

A paragrapher may be the worst enemy, and probably he has to go some.

Testimonial for our Eucalypti Prescription! "Silverthorn-Wright" "I had enclosed one dollar for bottle of your eucalypti prescription. I got it for trouble on my head. It has done wonders for me and I want another bottle, having used two bottles." "E. Swigler, Eugene, Ore." 7-25-27

Drink A & W Root Beer—It's different. 7-25-27

If you feel all run down and low, try a \$1.00 bottle of our nerve tonic. It acts quickly, increases appetite and gives you vigor. Silverthorn-Wright's family drug store. 7-25-27

Some extra values on boxes of Fine Stationery for one week, 40c for all 75c values. Silverthorn-Wright's family drug store. 7-25-27

NOTICE TO CREDITORS In the County Court of Union County, Oregon. By all persons having claims against the estate of Sarah J. Kuhn, deceased, are notified that the undersigned has been appointed administrator of the said decedent and that such claims should be presented by the above named party, and that such claims should be presented, duly verified, to the undersigned at her home in Island City, or at the law office of J. S. Higgins, in La Grande, Union county, Oregon, within six months from the first publication of this notice, which is on the 6th day of July, 1927. VIOLA M. WADE, Administrator. Island City, Oregon. July 8-12-27-Aug. 5.

CHICAGO LIVESTOCK CHICAGO, July 27 (AP)—U. S. Department of Agriculture.—Hogs—20,000; uneven, 10 to 20c lower than Tuesday's average; head decline on finished light weight hogs; spots 25 to the lower on medium to good 150 to 175 lb. weights, top, 410-50. Cattle—12,000; fed steers steady; grassy work; also stock and bullocks steady to 25c lower; vealers steady; strictly choice weighty steers, 112.50; 1150 lb. averages, 112.00; 14.00; yearling heifers up to 112.75. Sheep—14,000; fairly active; generally steady with Tuesday's; natives to increased supply; early bulk, 112.50 @ 12.50; best head above \$14.00; good Idaho, heavy, \$14.00; best westerns, head above \$14.00; full lamb strong, total, \$15.00 @ 16.00; desirable weight fat ewes, \$4.00 @ 5.00; asking around \$12.50 for choice 6-ding lambs; both Tuesday's better grade feeders, \$12.00 @ 12.50.

BUTTERFAT SAN FRANCISCO, July 27 (AP)—Butterfat U. S. 80c; Francisco, 45 1/2 @ 46c.

Chocolate that appears white on the outside has been kept in an overwarm place, so that some of the fat has melted and come to the surface. It is not injured in any way for use.

\$15

Portland to San Francisco

\$25.46 from here

Special reduced low fare good only on special all-coach trains leaving Portland every Sunday, Tuesday and Friday at 10 a. m. Arrives San Francisco 10:30 a. m. next day. Low-cost menus in diner and lunch cars. Speed, comfort, safe

\$30 roundtrip Coach fare from Portland good for 15 days returning on any train carrying Coaches.

Southern Pacific

Ask any railroad agent

COLONIAL

The Family Entertainment

Last Showing Today

Tiffany Productions presents **MORGANSON'S FINISH**

Starring ANITA STEWART, MAHLON HAMILTON & JOHNNIE WALKER

Comedy "WRONG MRS. WRIGHT" Matinee 2 P. M. Evening 7 P. M. Machine Paul Graver's Orchestra

25c—Any time
—Any seat
—Any show
—Children 10c

HUNTER & BOHNENKAMP

Funeral Directors

MAIN 42

Day and Night