

SUPPLIES STRONG AS MARKET OPENS

Berries Firm in Portland - Butter, Eggs Steady at Saturday Prices

PORTLAND, Ore., July 15 (AP)—Plentiful supplies in most lines backed the opening of trade on local markets Monday. Wholesale demand country meats started out quietly, but firm at prices ranging slightly higher than Saturday. Supplies of prime hogs and veal are barely sufficient for demand, but in the poultry division, light hens threaten a strong over-supply. Lights are quoted down to 14 cents for choice birds.

Berries are very firm at last week's price ranges, with strawberries in limited supply at the a box and ground \$2.25 per crate to retail.

Choice freestone peaches are offered at 20 cents per dozen.

Early Italian prunes of excellent quality entered the market at a price of 15c a dozen, retail prospects are for a strong supply of this fruit.

Bunched vegetables on a firm basis at three bunches for 10 cents. Butter and eggs are steady at Saturday's closing prices.

MARKET NEWS OF THE DAY

CHICAGO GRAIN				
Wheat	Open	High	Low	Close
July	112 1/2	112 1/2	110 1/2	110 1/2 @ 110 1/2
Sept.	110	110 1/2	107 1/2	107 1/2 @ 107 1/2
Dec.	113 1/2	113 1/2	111 1/2	111 1/2 @ 111 1/2

Stocks Move Up But Volume Of Trade Slumping

NEW YORK, July 15 (AP)—Resumption of the upward movement in today's stock market was accompanied by a falling off in the volume of trading. Profits taking sales were rather heavy, due to the cautionary advice sent out by some of the larger commission houses, but they were generally well absorbed.

New peak prices were registered by more than a score of issues, including Rayco, Crane, Coty, Inc., Manhattan Electrical Supply, General Electric and American Bond.

Heats moved up with the Industrials. E. I. du Pont and Northern Pacific quickly mounted to new high ground and Atchafalaya, Missouri and Pacific preferred, Atlantic Coast Line and several others advanced a point or more.

The closing was steady. Several industrial leaders, including United States Steel, came off on profit-taking but new strength cropped out in some of the oil shares in the final hour. Southern Pacific regained the leadership of the rail group. Total sales approximated 1,200,000 shares.

Wheat Drops More Than Two Cents

CHICAGO, July 15 (AP)—Open wheat unchanged to 1/2 cent lower, the first market ever since it was first established all around. Corn was relatively firm, starting at 92 1/2 cents to 1/2 cent advance, and subsequently seeing several gains. Oats were unaltered to 1/2 cent. Wheat closed heavy, 2 1/2 to 3 1/2 cent lower, even unchanged to 1/2 cent higher, with 1/2 to 1 1/2 cent down and provisions ranging from 1/2 cent decline to a rise of 2c.

Portland Produce

PORTLAND, Ore., July 15 (AP)—Butter—Extra, 25c; prime, 24c; standard, 23c; prime, 22c; best, 21c. Creamery prices: prime, 24c; above cube standard, 23c; at 20c. C. O. B. Portland.

Milk steady, raw milk 4c per cent, 3 1/2 to 4c. C. O. B. Portland.

Eggs steady, current receipts 21c; fresh medium, 20c; fresh standard firsts, 21c; fresh standard and extras, 20c.

Poultry steady: heavy hens, 21c; light, 19c; 14c; medium, 18c; broilers, 15c; 16c; pelina, 14c; ducks, 20c; colored, nominal; turkeys, live, nominal; dressed, 27c.

Onions steady; local, 32 1/2 to 35c.

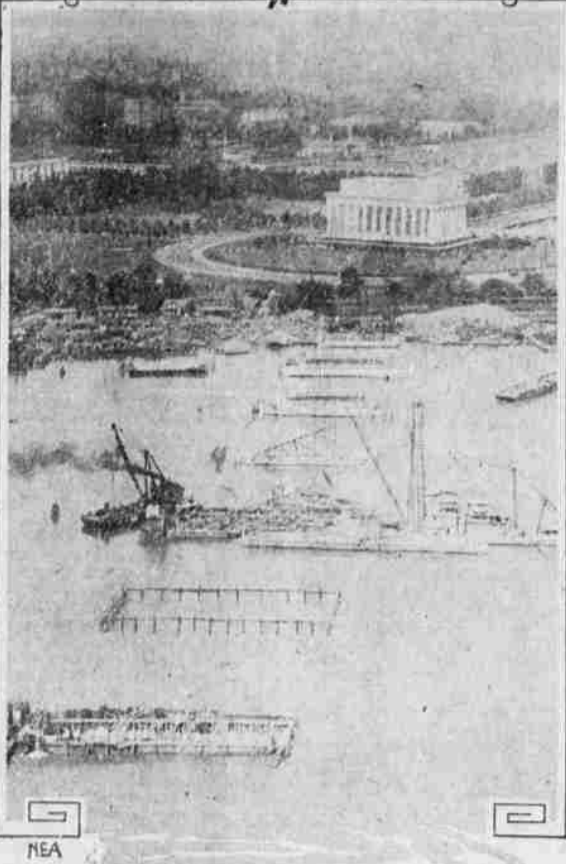
Potatoes steady, 25 1/2 to 35c.

Portland Livestock

PORTLAND, Ore., July 15 (AP)—Cattle and calves steady to strong; receipts, cattle, 2,227; calves, 280; cars, 195, including 400 cattle and 60 calves direct or through. Steers, 500 to 1,000 lbs., good, \$9.50 to 10.00; 1,000 to 1,200 lbs., good, \$9.50 to 10.00; medium, 500 lbs. up, \$8.50 to 9.50; common, \$7.00 to 8.50; calves, \$4.00 to 5.00.

Red calves and yearlings, 500 to 550 lbs., good, \$9.20 to 10.00; half, good, \$7.50 to 8.50; common to medium, \$6.00 to 7.50; cows, good, \$7.00 to 8.50; common to medium, \$5.50 to 7.00; low calves to calves, \$3.00 to 4.50; bulls (yearlings excluded) best, good, \$6.00 to 6.50; calves to medium, \$4.50 to 6.00; calves, 50 pounds down, medium to choice, \$3.00 to 4.50; cattle to common, \$2.50 to 3.50; vealers milk, \$1.50 to 2.50.

Marble Span to Cross Potomac



This graphic airplane photo shows the position of the new memorial bridge which will connect the Lincoln Memorial at Washington and Arlington, the historic Lee mansion on the Virginia hills opposite. The piers are all above water and work is progressing on the stone abutments.

Oregon Exports Decline, Wheat Ranks Highest

WASHINGTON, D. C., July 15—Exports of merchandise from Oregon during the first three months of 1927 were valued at \$12,366,571 compared with \$12,781,451 during the corresponding period of 1926, a decrease of \$414,880, according to figures made public today by the department of commerce.

Wheat shipped from the state to overseas markets was valued at \$2,998,200 and ranked first in order of value among the commodities exported during the three months. Exports of apples were valued at \$1,389,700 followed in order by boards, planks, and saw-logs, \$1,171,701; wheat flour, \$1,074,280; and prunes, \$901,232.

Milk and cream, pickled salmon, cattle hides, canned and prepared fruits, binder twine, logs and hewn timber, wood, manufacturers' machinery, vehicles, chemicals, metals and manufactures of, and equipment all were included in the commodities exported during the three months.

Development Of Pulp Mills Urged

PORTLAND, Ore., July 15 (AP)—Develop the pulp and paper industry in the northwest from within by helping existing mills to increase payrolls and profits and there would be little need for anxiety as to the growth of the industry in the Columbia basin area and throughout the entire northwest.

Dr. Hugh P. Baker, executive secretary of the American Paper and Pulp Association, gave this advice to the business interests of Portland in an address today at the midnight forum of the chamber of commerce on "Our Forests and the Wood-using Industries of the Northwest." He is one of the most eminent pulp and paper authorities in the United States and has been here for a week making a study of the forest resources and the possibilities for the development of the pulp and paper industry.

In Stonewall Jackson's Steps



Major Thomas Christian (right), grandson of "Stonewall" Jackson of Civil War fame, has been appointed head of the military science and tactics department of the University of Chicago. His famous grandfather held the same post with Virginia Military Institute before the war of 61. With Major Christian above is Major Frederick Barrows.

FIND IT HERE

Copy for this column must be in by 9 a. m.

YOUR PICTURES

Will be a lot more attractive when enlarged and hand-tinted by Richardson, "The Art Man," also beautifully framed by him, at Richardson's Art and Gift Shop, 7-12-5t

FARM LOANS: LOWEST RATES. SCHOOL FUNDS also available.

H. R. DIXON, Foley Building, LA GRANDE, ORE. 2-18-4t

SUMMER NORMAL

Normal school books and school supplies of all kinds on sale at Silverthorn-Wright's family drug store. 6-27-4t

A BEAUTIFUL TABLE

There is nothing more pleasing in your home than your table when set with one of the new Ivory, Himmervage, Patterns, and Pastoria Glassware. See the newest pattern in both dinner and glassware at Richardson's Art and Gift Shop. 7-12-5t

WINDSHIELDS and SIDE GLASS

Quickly and correctly fitted at the right prices at Richardson's Art and Gift Shop. 7-12-5t

CALL FOR BIDS—Alley Improvement

Sealed bids will be received by the Commission of the City of La Grande, Oregon, for the construction of the improvement in Alley Improvement District No. 149, within the City of La Grande, Oregon, according to the plans and specifications of said alley improvement on file in the office of the city recorder of said city.

Bend Drum Corps Walks to La Grande

(Continued from Page One)

Down in California somewhere, a bunch of native sons are wearing them, while the Bend drummers and buglers and the drum major single hand round dollars, and under the federal reserve notes in their pockets. Yes, the gaily uniforms were looked, and the corps from Perry A. Stevens just is waiting—well, whatever it could get to wear. Some of the drum are loggers in civil life, and some are farmers, and they are all wearing their ordinary working togs.

"That doesn't affect their playing, however. They may be out of the dust and dirt accumulated in the march from Bend to La Grande and because of their non-descript fatigues, but they do promise to give more the equal of any drum corps music heard at the convention. And after all, that's what a drum corps is chiefly for.

10 Years Ago Today

German start big drives east and west.

People from all over town come to the L. & L. Pharmacy here, leave their parcels, meet friends and kinfolk, ask us a thousand questions about this and that—and we like it.

We strive to serve you in any way we can. Make our store your headquarters when you are downtown. If you ever come here we feel that our service and smiling helpfulness will make you a steady customer.

L. & L. Drug Co.

HUNTER & BOHNENKAMP Funeral Directors

MAIN 42 Day and Night

J.C. PENNEY Co.

A NATION-WIDE INSTITUTION

"where savings are greatest"

108 Depot St. La Grande, Ore.

"Penco" Sheets

Improved Quality

Beautifully fine and firmly woven sheets—of Penco quality. Hemmed ends and 31x90 size at a price that our immense Buying Power makes possible.

\$1.45

25th Anniversary

Penco Cases

Ready to Use

A quality that appeals to every housewife—at an interesting low price. Replenish your supply now! Each.

35c

25th Anniversary

Our Sheeting

"Penco"—Improved

A name that housewives know for superior wearing qualities.

2 yards bleached or 2 1/2 unbleached 49c

2 1/2 yards bleached or 2 1/2 unbleached 55c

25th Anniversary

Honor Muslin

Exclusively Ours!

More than honorable mention is awarded this fine muslin—of countless household uses. Unbleached 39 inches wide, bleached 36 inches, yard.

12c 1/2

25th Anniversary

New Gingham

32 Inches Wide

Fresh and crisp for spring-time frocks—these new gingham have the spirit of Spring. Our low price is famous, yard.

10c

10 Years Ago Today

German start big drives east and west.

People from all over town come to the L. & L. Pharmacy here, leave their parcels, meet friends and kinfolk, ask us a thousand questions about this and that—and we like it.

We strive to serve you in any way we can. Make our store your headquarters when you are downtown. If you ever come here we feel that our service and smiling helpfulness will make you a steady customer.

L. & L. Drug Co.

HUNTER & BOHNENKAMP Funeral Directors

MAIN 42 Day and Night

The MODERN WAY for the MODERN DAY

"Good-bye kitchen—see you at six o'clock"

IN the Westinghouse Automatic Electric Range, women have found all the advantages of electric cooking under automatic control, and a range that has many superiorities of construction as well.

You may put dinner in the oven at ten in the morning, setting the clock to start it cooking at three. You are free for the day and return at six to find dinner ready to serve, piping hot, thoroughly cooked, and full of the flavor that only the heat storage method of cooking can give it.

This freedom from the kitchen is only one of the many advantages of electric cooking. The time will come when you will cook with electricity—why not now.

Special terms this month which you cannot afford to refuse—Act today.

Eastern Oregon Light & Power Company

"COOK BY ELECTRICITY"