



AUTOMOBILE NEWS



CHRYSLER COMES OUT WITH A "62"

New Model in Production According to Announcement Made by Company

Announcement is made by the Chrysler Corporation that a new model, described as "The Great '62,'" is in production at the company's plants.

Improvements and refinements in the Chrysler "62" represent a combination of many features entirely new to the field in which they will sell, according to company officials, and in their opinion will set the latest offering standard for other cars in any other price group.

Models listed are the two-door four-door sedans, the roadster coupe, the touring car and landau sedan.

Powered, as its model number indicates, to deliver a speed of 62 more miles an hour, the new is declared by its producers to embody all the familiar dash of assurance and smoothness of per-

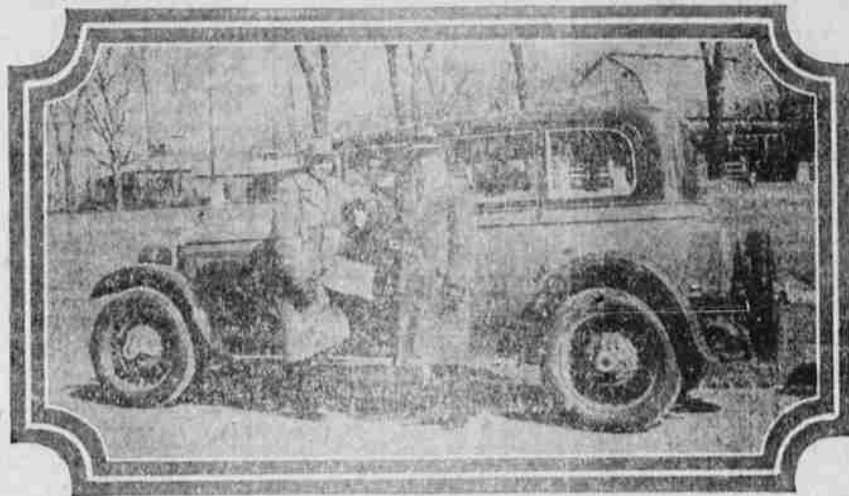
formance associated with the Chrysler name, combined with even brisker acceleration and instant obedience in both high and low gears.

Traditional Chrysler beauty and charm are accentuated in its lower, more sweeping stream lines, advance intimation, as well as in the longer bodies, drum-type head-lamps of the latest style, and small road wheels. Roofs of closed cars curve downward in the rear, the roof line being followed in the window design. Saddle spring seat cushions, such as are found in cars of much higher price, with fine figured mohair upholstery in closed and leather in open bodies, add to the comfort and artistry of equipment.

New features are of a kind to assure maximum serviceability, riding ease and life for a car of its class, according to L. W. Weeks, local dealer.

Following the teachings of Lamaze, the Kalmuck tribe throw the bodies of their dead to the mercy of dogs, vultures and birds of prey. If the remains are not devoured within a few days the deceased is considered to have been very wicked, since dogs and vultures refuse to eat his flesh.

"Butch" Henline Buys Nash Ambassador



Walter "Butch" Henline, catcher for Brooklyn, has treated himself to a new Nash Ambassador. The car was purchased from the Nash dealer at Bloomington, Ill. Mr. Henline is the gentleman with his arm on the car.

Time To Retire?

Buy Fisk--

You are protected, with no increase in cost.

GOLDEN MOTOR OIL TEXACO NEW GASOLINE

Free crankcase service.

Heasty & George

Corner Adams and Second

Motorists Advised How To Prevent Punctures on Freshly Oiled Roads

The state highway department and the Oregon State Motor association issue the following advice to motorists driving over freshly oiled and gravelled roads. The warning is this:

After you have driven over newly oiled highway and at the end of every eight or ten miles of oiled highway, stop and with a screw driver, pen knife, or what you have, pry out all bits of crushed gravel that have collected on the tires.

Damage to tires has been great and indignation of motorists correspondingly greater, due to cuts wrought by gravel imbedded in tires according to the highway department and motor association, who have been bombarded with calls from all parts of Oregon during the past few days.

Oiling Necessary

The exact condition is this: Oiling of the principal unimproved highways is necessary. Spreading of crushed rock and gravel over the new oil to keep it from splattering over the under sides of automobiles is also necessary. But, the film of oil that gathers over the tires picks up rock and gravel. After the automobile has left the oiled

stretch the rock is ground into the rubber by constant pressure between the car and highway, and consequently punctures the tire. Thus, damage to the tires brings about indignation of the driver, with a subsequent recall upon the highway department and motor association.

The state highway department carried on a series of investigations to remedy the situation and arrived at the conclusion that both oil and gravel are necessary to the motorist. The motorist, however, must keep the gravel from working into the tires and that is where the screw driver, pen knife and what else enters into the situation.

Condition Temporary

This condition is purely temporary and will only exist while roads are freshly oiled and only causes trouble for a few days after the gravel has been spread. Were it possible to shut off the oiled road and eliminate the necessity of gravel, it would be much better for the highway department and for the motorist themselves but this condition is not always possible and since it is not, this grievance must be born as the lesser of two evils.

Wherever possible the highway department is providing detours so that the oil and gravel may be avoided.

The highway department is now experimenting with rolling the gravel after it is spread over the oil and should this prove successful, much of the trouble will be eliminated.

Safety, Comfort In Ford Driving Depends On Oil

Women have been very sensible in insisting that the value of a car depends upon the comfort it gives and how safe it is to drive. With new Ford cars, Ford has their care for marketing, for taking children to school, for bringing them home, they insist on having definite control of their cars in all emergencies.

Recently women have learned that as the Ford system of lubrication differs from that of any other car, it should be lubricated with an oil made for Ford exclusively. It is Ford.

Women Careful Buyers. Women are naturally careful buyers. They have learned that in practically every case Ford "chatter" is caused by the failure to buy an oil made for Ford exclusively, and that the result is excessive repair bills. "Chatter," they have found, is another name for excessive and destructive vibration, and women's insistence on comfort has led them to adopt one new type of oil, which ends costly "chatter" in fast increasing numbers.

Despite the fact that investigators in many states have reported that women now buy oil for the family car as they buy meat, groceries and other supplies for the home, only one great oil company which markets its products nationally has advertised them to women. These advertisements have featured Vedol Fordol, the pioneer among oils especially compounded for Fords.

Spend \$80,000,000 On Western Roads

MINNEAPOLIS, July 9. (SNA)—Five northwestern states will spend a total of \$80,000,000 for rural highway construction and maintenance during 1927.

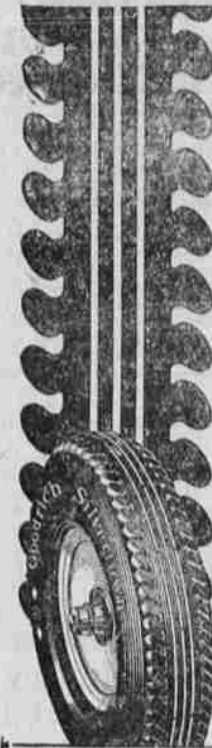
The expenditure will amount to about \$11 a person, which is above the average for the United States.

The Successful Record of a Wonderful Tire

Silvertown Balloon users have made this record—longer mileage than ever before—cupping or wavy tread wear practically unknown—safety increased—noiseless traction.

We know that the Silvertown Balloon tread is giving our customers more than they demand. The secret of their satisfaction is the center flexibility and powerful shoulders of the proven Silvertown tread design.

Experience based on distinguished service for our customers says, "Buy Silvertowns for the utmost satisfaction from balloons."



Radio Balloons
28 x 4.10 \$8.40
30 x 4.75 \$10.75
Other sizes in proportion.

Silvertown Balloons
27 x 4.10 \$10.15
29 x 4.10 \$10.10
30 x 4.75 \$14.00

KELLY'S TIRE SHOP
1415 Adams Ave.



BEST IN THE LONG RUN.

Many Bargains Listed on Want Ad Page

Performance, Comfort and Luxury

IN THE Chrysler "50" Walter P. Chrysler has upset all ideas of the quality and value that can be purchased in a motor car priced at \$750.

Full-sized comfort with ample seating capacity for adult passengers;

Speed of 50 and more miles an hour with a smoothness never before known at such price;

Pick-up of 5 to 25 miles in 8 seconds;

Economy of 25 miles to the gallon;

Distinctive and enduring beauty which makes you proud to own and drive it;

And with these—through the great Chrysler plan of Standardized Quality—dependability and long life assured by the same finest engineering design and precision manufacturing which have produced the Chrysler "60", "70" and Imperial "80".

You owe it to yourself to ride in the "50"—

Not a perfunctory demonstration, but we are eager to give you the opportunity for a real test, you to select the route and do the driving, if you wish.

Then and only then will you appreciate that nowhere else at \$750 can you obtain the same performance, luxury and comfort you get in the Chrysler "50".

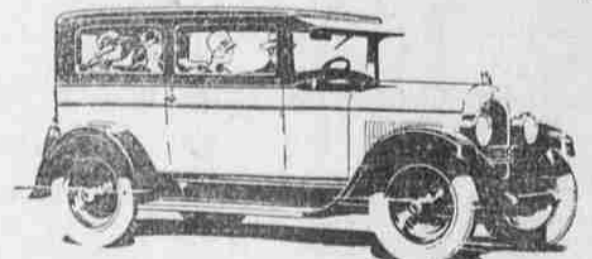


\$750

to \$850

J. A. B. Detroit

Coupe \$750; Coach \$760; Roadster (with rumble seat) \$795; Sedan \$830. J. A. B. Detroit, subject to current Federal excise tax. Chrysler dealers are in a position to extend the convenience of time payments. Ask about Chrysler's attractive plan. All Chrysler cars have the additional protection against theft of the Fedco system of numbering.



CHRYSLER "50"

L. W. WEEKS

Jefferson Ave.

Telephone 180-J

DRIVE A CHRYSLER TO PROVE A CHRYSLER

DODGE BROTHERS Senior Line

For Lovers of Speed and Spirit

Performance for sportsmen—for lovers of speed and spirit.

Seventy miles, and more, an hour—with smoothness unknown before to motordom.

Positive brilliance in traffic. Impatience to be off and ahead. Rocket acceleration.

And boundless power. Quiet, deep-lunged power—the voice of magnificent engineering.

Beautifully made, too, this Senior! Long, low and smart. With refinement and luxury apparent in a hundred details.

A Six that the fashionable instantly approved—and the experts—and veteran owners of the costliest motor cars.

Drive it an hour and you'll drive it for years.

L. C. SMITH

5th and Depot

Phone 175-J



DEPENDABLE

Try CLAY'S PLACE

Texaco Gas

Fisk Tires

Full Line of Accessories

A good place to trade

We Have Cold Drinks

Clay's Place East Adams