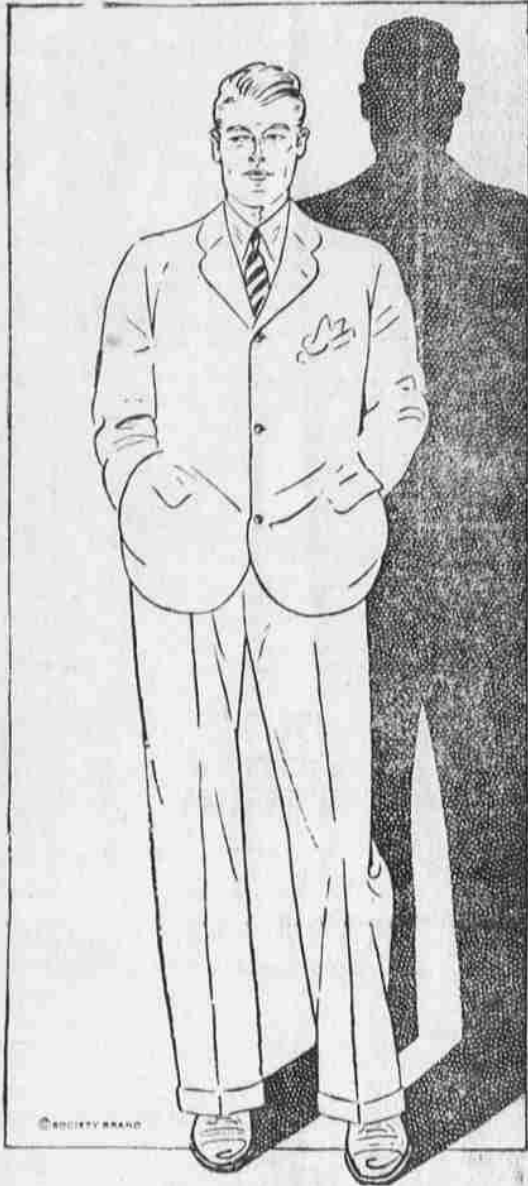


Celebrate With a New Suit!



IT'S THE CUT OF YOUR CLOTHES THAT COUNTS



Younger men are wearing 3's HERE'S the RIGHT MODEL

Tan, light gray, fawn, buff color — a great variety. All with the unique single-and-triple stripe that gives our suits their individual character.

\$33

Westenhaver & Gilbert The Store For Men

CHERRIES COMING RATHER SLOWLY

Bings Bring from 15 to 17 Cents and Sours Selling at 6 to 8 Cents

PORTLAND, Ore., July 1 (AP)—Cherries are coming into the local market rather slowly, with bings, loose pack, bringing 15 to 17 cents a pound. Sour cherries...

Lumber Market Shows Strength; Shipments Gain

NEW YORK, July 1 (AP)—A sharp uptick in the order file of the softwood lumber industry for the week ended June 25 is reported by the National Lumber Manufacturers' association.

CHICAGO LIVESTOCK

CHICAGO, July 1 (AP)—Department of Agriculture—Hogs—25,000; very uneven; butchers 240 lbs. up, extremely slow; early sales desirable hogs 230 lbs. down steady; later, 10 to 200 lbs. or packing sows mostly 15 to 250 lbs.; top, \$9.50; bulk desirable 160 to 200 lb. averages, \$9.15 to \$9.40.

WOOL REPORT

BOSTON, July 1 (AP)—The Commercial Bulletin tomorrow will say: "Gradually the wool market strengthens. There is a better outlook for the manufacturers than for a long while and the mills are buying raw material more generally."

In the west the new clip is moving steadily and prices are against the buyer, a new top price of 35 1/2 cents having been established in Montana this week.

Bees sometimes eat their eggs because of lack of time or meat in their ration. Egg eating is hard to cure, and persistent egg-eaters are better killed and eaten.

CALL FOR BIDS—SEWER IMPROVEMENT

Bidder bids will be received by the Commission of the City of La Grande, Union County, Oregon, for the construction of the improvement in Improvement District No. 4-12, within the City of La Grande, Oregon, according to the plans and specifications of the said improvement now on file in the office of the City Recorder of said city.

PORTLAND LIVESTOCK

PORTLAND, Ore., July 1 (AP)—SHEEP—about steady; no receipts; 200-lb. ewes, \$8.25 to \$8.50; 100-lb. ewes, \$8.15 to \$8.25. Hogs active; July steady; 200 lbs. or more, light hogs 120 to 180 lbs. r. common, medium, good and choice, \$8.75 to \$10.50; packing hogs rough and smooth, \$8.00 to \$9.00; sheep unchanged; no receipts.

CHICAGO GRAIN

Table with columns: Wheat, Open, High, Low, Close. Rows for July and Sept.

Markets

LIVERPOOL WHEAT LIVERPOOL, July 1 (AP)—Wheat: Wheat 3/4 to 1 1/4 higher; July 11s, 1 1/4; Oct. 11s, 5/4; Dec. 10s, 1 1/4.

PORTLAND WHEAT PORTLAND, Ore., July 1 (AP)—Wheat—BBB hard white, hard white, 11.25; soft white, 11.25; soft white, 11.25; hard winter, 11.25; northern spring, 11.25; western red, 11.25.

CHICAGO CASH CHICAGO, July 1 (AP)—Wheat—No. 2 hard, \$1.46 1/4; No. 2 yellow, \$1.45 1/4; No. 2 white, 47 1/2 c; No. 2 white, 45 1/4 c. Rye—no quote. Barley—72 1/2 c. Timothy seed—\$4.75 to \$5.00. Clover seed—\$20.00 to \$25.00. Lard—\$12.70. Hides—\$12.00. Pellets—\$14.00.

Both Low, High Levels Reached In Wall Street

NEW YORK, July 1 (AP)—Rising prices ushered in the new month in the stock market. Despite the collapse of half a dozen issues to new low levels for the year, operators for the rise bid aggressively for stocks, sending more than a dozen issues to new peak prices as shorts scrambled to cover.

Baldwin soared 15 points to a new record top at 22 1/2. New peak prices also were attained by Southern Pacific, Adams Express, Collins and Aikman, Resaca Insurance, Reid Ice Cream, Mullins Body, Manhattan Electrical Supply and American Chicle.

On the other hand the Pan American, American Car and Foundry, Jordan, and Cuba company sank to new 1922 lows.

The closing was strong. Expanded operations on the long side of the market were reflected in the greatest breadth of strength in late trading in which a diversified list of stocks advanced 3 to 4 points. These included international harvester, Pittsburg Coal, Westinghouse Air Brake, International and Steel, International Agricultural Chemical, Prior preferred and Reid Ice Cream. South Porto Rico Sugar sold 7 points in all and Dodge Brothers "issues" again were liquidated. Total sales approximated 1,400,000 shares.

PORTLAND PRODUCE

PORTLAND, Ore., July 1 (AP)—Wholesale prices: Butter—extra cubes, city, 40 1/2; standards, 29c; prime firsts, 28c; firsts, 26 1/2 c. Creamery prices: Prints 3c above cubes; standards, Butterfat 25 1/2 c. f. o. b. Portland. Bids to farmers: Milk steady; raw milk 44 per cent, 42 1/2 c; 1 c. b. Portland; Butterfat 25 1/2 c. f. o. b. Portland. Eggs steady. Current receipts 20c; fresh medium, 19c; fresh standard firsts, 21c; fresh standard extras, 22c. Poultry steady; heavy hens, 17 1/2 c; light, 15 1/4 c; springs, nominal; broilers, 15 1/2 c; Pekin white ducks, 20c; colored, nominal; turkeys, live, nominal; dressed, 27c. Onions steady; local, \$3.75 to 7.10. Potatoes steady, \$3.50 to \$4.50.

NEW YORK FRUIT

NEW YORK, July 1 (AP)—Dried fruit steady.



A man told us the other day that the recipe for what some people call good house paint is as follows: Chase wild bull frogs for 10 miles and gather up the hops, to them add 5 gallons of tan bark, 1/2 pint of shellac and 1 bar of house-made soap and a little chalk. Boil for 25 hours and strain through 1-inch mesh red top field fencing and apply with a brush. But we do not consider this as being a wonderful paint. It might sound foolish to you to think of paint being made that way but there is just such things going on. Of course, they don't put the hops in it or the tan bark but there are other adulterations that are nearly as bad. Mow-itch 100 per cent pure house paint is absolutely free from any adulteration and is sold subject to chemical analysis.

Claude C. Pratt Lumber Co. We Sell For Cash "The Poor Man's Friend" Near Foundry. Phone Main 218 No Sunday Business

Wheat Irregular; Grains in Decline

CHICAGO, July 1 (AP)—Opening at 3/8 decline to 3/8 advance, wheat scored slight gains all around, and then dropped to well below yesterday's finish. Corn started unchanged to 1/8 higher, climbed a little more and later underwent a decided setback. Oats likewise became easier. Provisions also tended down grade.

10 Years Ago Today

Revolution in China is on again. In spite of wars and revolts and floods and famine the quest for beauty goes on. The newest in beauty aids is SPRING BLOSSOMS. Delicate color, pure and beneficial creams, soft and clinging powder and every one does what it is made to do. Have you tried it. If you find it inferior to any, regardless of cost we will refund your money. Only At L. & L. Drug Co.

J.C. PENNEY CO. A NATION-WIDE INSTITUTION. "where savings are greatest" 25th Anniversary Summer Sport Hats For Outings Of All Kinds. A notable offering of midsummer hats—women will buy several to match various dresses at this typical saving! Our Low Price 98c Narrow and wide brims to protect your eyes from the sun—yet comfortable for motoring and all kinds of outings. SEE OUR WINDOW DISPLAY! Many Bargains Listed on Want Ad Page

A "Sizzling" Big Time! TOMORROW And All THREE DAYS Elgin Celebration July 2, 3, 4 Big Program Each Day—Something Doing Every Minute

Our Anniversary Celebration Prices—published in Wednesday's Observer are in effect until Saturday night. As our stores will be closed all day Monday July 4th, tomorrow will be an unusually busy day. People buying delivery orders, will receive much better service if the orders are placed early in the morning. This early morning buying also assures you of the very best quality of fruits and vegetables. WATERMELONS All sizes—deep red meat, full of sugar. LB. 3c Cantaloupes Standard size. Ripe, excellent quality. 2 For 15c 3 For 35c Cantaloupes Jumbo size. Extra large, thick-meat. 3 For 35c Store No. 359 Phone Main 711 Store No. 65 Phone Main 690 SKAGGS SAFEWAY STORES Distribution Without Waste

THE BOHNENKAMP MORTUARY Lady Assistant Main 42

BUTTERFAT SAN FRANCISCO, July 1 (AP)—Butterfat 2 1/2 c. San Francisco, 15 1/2 c.