

LaGrande Evening Observer

(Incorporated) An Independent Newspaper FRANK B. APPELBY Editor and Publisher HARVEY F. MATTHEWS Business Manager

Published evenings, except Sunday, at 145 Adams Avenue, La Grande, Oregon. The Observer-Star published every Friday. Entered at the Postoffice at La Grande, Oregon, as Second Class Mail Matter under act of March 2, 1879.

OFFICIAL PAPER OF UNION COUNTY AND THE CITY OF LA GRANDE

MEMBER ASSOCIATED PRESS The Associated Press is exclusively entitled to use for publication of all news dispatches credited to it or not otherwise credited if published therein. All rights of republication of special dispatches in this paper, and also the local news herein also are reserved.

SUBSCRIPTION RATES By Carrier: Daily, per month in advance, \$7.50; Daily, per six months in advance, \$42.00; Daily, single copy, 5c.

By Mail: Daily, per month in advance, \$6.00; Daily, per six months in advance, \$32.50; Daily, per year in advance, \$58.00; Weekly Observer-Star, per year, \$22.00.

ADVERTISING RATES: Display, local, per column inch, 45c; Display, foreign, per column inch, 40c; Time contract prices on application.

THE LORD IS NEAR—The Lord is nigh unto them that are of a broken heart; and saveth such as be of a contrite spirit. Psalm 34:18.

BERRY PRICE IS LOW IN PORTLAND

Although Peak Is Passed Strawberries Sell for Five Cents a Box

PORTLAND, Ore., June 29 (AP)—Although the peak of the strawberry market has been passed, good berries still are selling for as low as 5c a box of about 4 1/2 bushels when sold by the crate. The quality is exceptionally good.

New High Record Is Established On Wall Street

NEW YORK, June 29 (AP)—Establishment of a new high record since 1920 by Southern Pacific common at 117 1/2 featured today's dull and irregular stock market.

WAS THE GOVERNOR MISQUOTED?

The Associated Press dispatch from Salem yesterday quoted Governor Patterson as follows: "Maybe the people of Oregon are willing to do without some of the things that they heretofore have demanded."

The income tax was voted on by the people of the state as a revenue measure; that and nothing more. Its defeat indicates merely, though apparently emphatically, that Oregon does not want an income tax.

The office of governor is, according to many people, the highest honor and the finest gift within the power of a state. True. A chief executive is, nevertheless, but the servant of that state and of its citizenship; a servant whose duty it is to discover the will and wishes of the people, to execute those wishes, not to dictate them.

If the people of a state vote for the construction of some public institution without voting how the expense shall be met, it is the duty of the governor and the legislature to see that it is constructed. If that governing group suggests a certain means of revenue and the voters disapprove that means, the duty is unchanged.

In view of these obvious considerations we are quite sure that Mr. Patterson was either misquoted or spoke thoughtlessly at a time when he was naturally disappointed over the defeat of what he considered to be a proper and prompt solution for Oregon's financial difficulties.

MARKET NEWS OF THE DAY

Table with columns: Wheat, Open, High, Low, Close. July, 110 1/2 @ 140 1/2; Sept., 110 1/2 @ 141.

LIVERPOOL WHEAT LIVERPOOL, June 29 (AP)—Wheat—Wheat 3/4 higher to 1/2 lower; July 11s, Oct. 11s, Dec. 10 1/2 s.

PORTLAND WHEAT PORTLAND, Ore., June 29 (AP)—Wheat—Hard white, hard white limestone, hard white soft white, western white, 11.10; hard winter, northern spring, 11.35; western red, 11.56.

CHICAGO CASH CHICAGO, June 29 (AP)—Wheat—No. 2 hard, \$1.41 1/2; No. 1 hard, \$1.45 1/2; Corn—No. 2 mixed, 97 1/2; No. 2 yellow, \$1.00 1/2 @ 1.01 1/4.

Wheat Unsettled As Market Closes

CHICAGO, June 29 (AP)—Opening unchanged to 1/2c off, wheat soon took a decided swing upward. Corn was relatively weak starting at 1/2c to 1 1/2c decline and not holding well on rising oats were firmer, provisions advanced.

PORTLAND LIVESTOCK

PORTLAND, Ore., June 29 (AP)—Cattle about steady. Steers, medium, \$5.25 @ 5.75; cows, common and medium, \$3.50 @ 4.00; calves, yearlings, medium to choice, \$9.25 @ 11.00.

ORDER TO SHUT DOWN

PORTLAND, Ore., June 29 (AP)—All fishwheel operators on the upper Columbia were ordered to shut down yesterday as a result of dissolution of a temporary injunction restraining the state from enforcing the legislative act banning fishwheels from the stream.

CHICAGO LIVESTOCK

CHICAGO, June 29 (AP)—Department of Agriculture—Hogs—31,900; generally the highest than Wednesday's average of 29,000. Better grade pigs packing more steady to weak; showing light hog advanced; top, \$9.50; bulk 100 to 200 lbs., \$9.20 @ 9.30.

NEW YORK FRUIT

NEW YORK, June 29 (AP)—Fruit firm steady.

BUTTERFAT

SEAN PHEAN (SFO), June 29 (AP)—Butterfat 7c to 8c. Butter 14c to 15c.

WE ARE CLOSING OUT

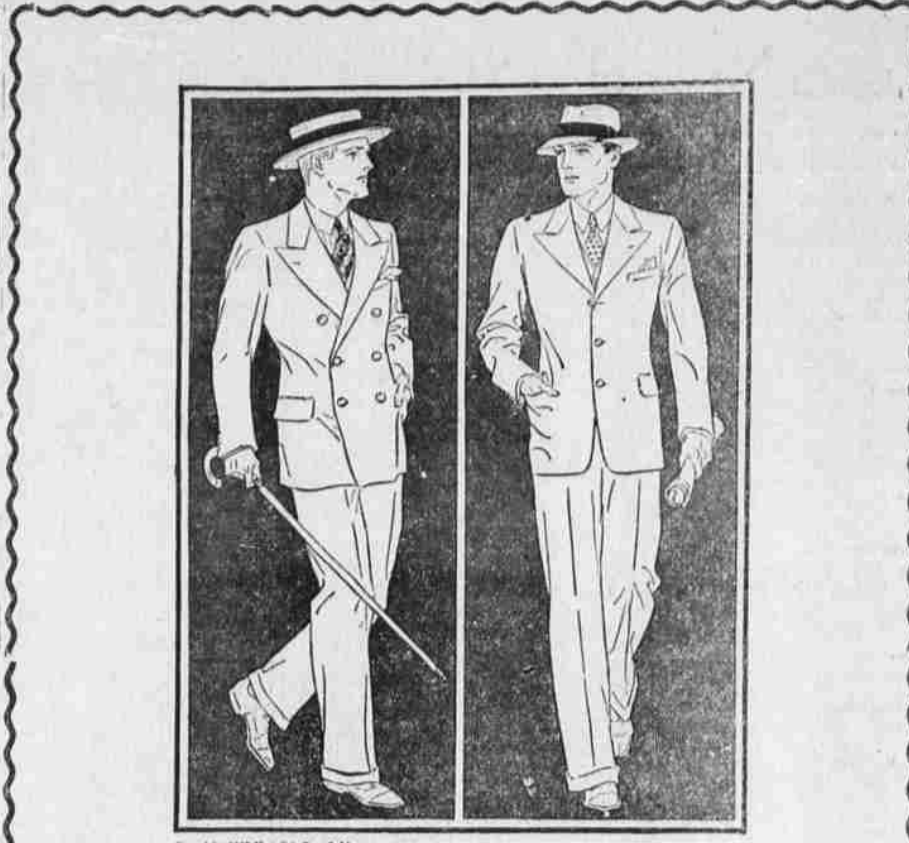
- All khaki colored 2-piece Girls Suits—age 2 to 14, for 98c
Boys' and Girls' Play Suits, age 2 to 8, 79c
Boys' Hats and Caps, 25c to \$1.49
All Girls' Summer Hats, 1/2 price 25c to \$1.98

SWIMMING SUITS

At Special Prices, 49c to \$3.88 The well-known Bradley Knit, size 2 to 16 Several Good Bargains in Discontinued Goods At Less Than Wholesale Price

NORTON'S KIDDY SHOP

Better Merchandise—Lower Prices



Of Course You'll Dress Up for The Fourth!

And What Would Look Better Than One of These Hart Schaffner & Marx Suits WHY not buy your next suit at a store that has the reputation of buying the largest selection of high grade suits in town.

- \$37.50 \$42.50 \$47.50 \$52.50
SHIRTS Fine soft feeling shirts in collar attached and neckband styles in patterns that have style and pep that young men like, made by Manhattan \$2.75 to \$5.00

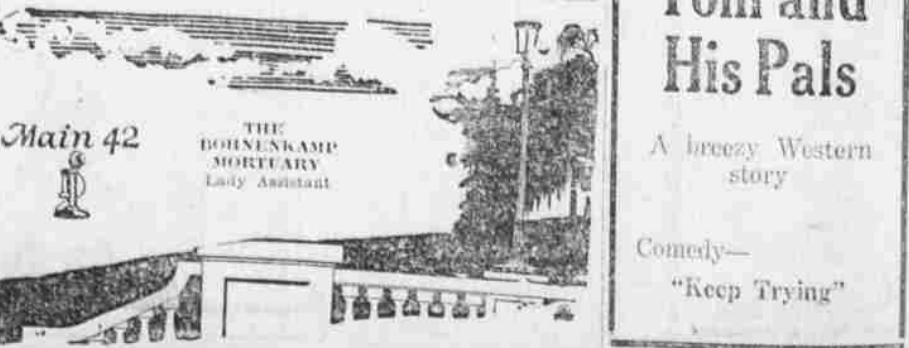
Cool? -- Yes! Because They Are Skeleton Lined FLORSHEIMS may attract the attention of your friends but they never will attract the attention of your feet.

N. K. West & Co., Inc. THE MAN'S STORE

7 a. m. Steamship Paris receives message from Byrd saying he was 10,000 feet up in a dense foresting fog, America was about 600 miles west of Lands End, England.

11:02 a. m. Radio from Byrd picked up at Lands End, England, shows plane has passed below Ireland and is heading for French coast.

12:05 a. m.—Intercepted message to British ship Hecate gives America's position about 100 miles west of Trevone Head, Cornwall.



THE BORNHAMP MORTUARY Lady Assistant

SHERRYS Today Only Tom Tyler -In- Tom and His Pals A breezy Western story Comedy— "Keep Trying"