

IMPROVEMENTS IN HIGHWAYS IS SEEN

Conditions This Year Better Than Last; Cross-Country Route Paved

WASHINGTON, D. C., June 18.—Since the 1926 touring season became a pleasant memory, the road builders of the nation have been more than ordinarily busy, with the result that the motorist caravan of 1927 will find many improvements and additional links of highways over previous years when they take the trail.

pared many pleasant surprises for the man who seeks his summer recreation along the Gasoline Trail.

Big Mileage Added During the past year, according to the statement additions to the Federal Aid System alone totaled 2,486 miles, bringing the aggregate Federal Aid improved highways to 55,903 miles. Equally important extensions have been made to the state primary systems and, in particular, the main East and West and North and South roads.

Regarding conditions on some of the outstanding national motor highways, the American Motorist says:

"An outstanding route, because of its significance as a continental connected highway from Atlantic City, N. J., to San Francisco, is U. S. Highway No. 40. This touches such important cities as Baltimore, Wheeling, Columbus, Indianapolis, St. Louis, Kansas City, Denver, Salt Lake City, and Reno. The entire length is 3,220 miles and the route is paved throughout from Atlantic City to St. Marys, Kans. a distance of 1,392 miles. Equally important, the roadway is chiefly graded earth or gravel, except between

Auburn and San Francisco, where there is a continuous stretch of pavement. This route crosses the Great Salt Lake desert over the famous Wendover cut-off.

Old Oregon Trail Good "Another U. S. route of importance to the tourist is No. 20, which extends from Atlantic City to Portland, Ore. It coincides with the Lincoln highway between Philadelphia and Granger, Wyo., in passing through Pennsylvania the route touches also Lancaster, Gettysburg, Chambersburg, and Pottsville, but passes through Chicago through Chicago Heights and Joliet to Aurora. At Granger, Wyo., Route No. 20 divides into 20 north and 20 south, the southern branch going through Evanston to Ogden, Utah, while the northern division continues into Idaho through Montpelier and Soda Springs. At Pocatello the route follows the Snake river rather closely, and in Nebraska, Idaho, and Oregon it coincides with the Old Oregon Trail. This route is improved with gravel, bituminous macadam, or smooth pavement as far as Wheatland, Iowa, and from Border, Wyo., to Portland, Ore., with varying stretches of gravel or pavement. Nearly 50 per cent is surfaced.

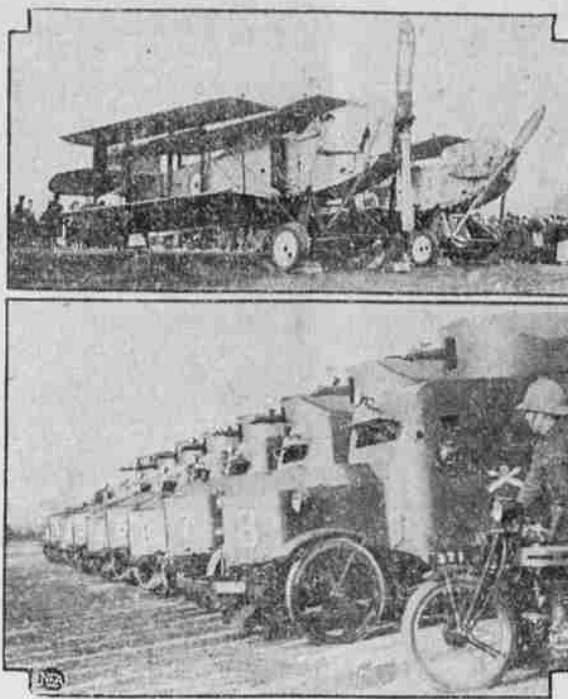
"Route No. 20 will carry the motorist westward from Boston through Albany to Buffalo, and then over a highly improved Canadian road to Detroit. The tourist who seeks a route to follow still farther westward may take No. 10, through Saginaw to Ludington, where Lake Michigan is crossed by ferry to Manitowic, Wis., and then touching Minneapolis, Fargo, Bismarck, Billings, Missoula, to Seattle. About three-fourths of this route is surfaced.

Smoother Route Mapped "An important partial continental route is No. 66, which forms a direct connection between Chicago and Los Angeles by way of St. Louis, Oklahoma City, Albuquerque, and Flagstaff. Its length is 2,245 miles, of which more than half comprises pavement or gravel. The greater part of the unpaved section is maintained in good condition in dry weather.

"The United States North and provides several useful south-south routes of outstanding importance. No. 61 is a good example. Originating at Grand Portage, Mich., this route runs to New Orleans, following the Mississippi river from St. Paul down to the Memphis bridge, where the road crosses to the east side and continues southward along the eastern shore.

"A diagonal route, which is open virtually the whole year, is No. 11, which runs in a southwest-

BRITISH "WAR DOGS" IN CHINA



These British "war dogs" of the land and the air, photographed as they were delivered at Shanghai, may see service in North China soon. Britain is preparing to send a force of airplanes and other war paraphernalia from Shanghai and Tientsin because of alarm over the nationalist drive into Marshal Chang Tso-lin's North China realm. In the upper photo are two huge military biplanes; below, a forbidding battery of armored trucks.

U. S. WILL BUILD SECTION OF ROAD

Will Start Work on Highway from MacDougall Springs to Toll Gate

WALLA WALLA, Wash., June 15.—Umatilla county last year built several miles of standard macadam road to MacDougall's camp, which is the point where the forest boundary is located. With Union county ready to match this improvement on its own side of the mountains, the completion of the new route across the summit remains and conditions will permit. Their action in attacking another six miles this year is accepted as an indication that they will fund the project as rapidly as funds and conditions will permit.

The present road from MacDougall camp to Toll Gate will be repaired again and be in use this summer, as the new survey follows a different route.

Ridge Road May Be Delayed "The road crews which have been assigned to work on the Skyline Toll Gate road along the summit from Toll Gate towards the Dayton-Godman Springs road, probably will not be able to start work before July 1, owing to the snow that remains in the hills. It is planned to complete the last gap in the Dayton-Toll Gate road by fall, although an early fall might be a bar to this.

More road work than in any previous year is thus being authorized by the forest service officials and with this impetus given to the mountain survey, a larger number is looked for this summer, than in all history.

Forty men of the forest service, started work this week on a new road from MacDougall Springs to Toll Gate, in the Umatilla National Forest, following a survey which is now being made by engineers of the Bureau of Public Roads. The new road will have a maximum grade of five per cent and when completed will be gravelled.

Will Be Snow At Toll Gate for the Fourth of July

Visitors to Toll Gate and Langdon lake on July 4 may frolic in the snow if they dare, Albert Baker, forest ranger in charge of the Walla Walla district, predicts. Mr. Baker arrived in town last evening from the mountains, with word that there may still be

round spots in the timber with snow three to five feet deep. Autos are now able to reach Toll Gate, although the trip is a long and tedious one for a portion of the way. Repairs to the road within the forest area will again be made at once so that travel to Toll Gate by auto will soon be possible with usual summer conditions.

Some day an American mayor is going to refuse to be made a member of the Sioux Indians. That will be now.



Hour after Hour over any Road -and always in Comfort!

Advertisement for Chevrolet cars, listing models like The Touring, The Coach, and The Sedan with prices. Includes an image of a Chevrolet car and a testimonial box.

Blue Mountain Garage M. A. HARRISON, Mgr. Opposite Postoffice QUALITY AT LOW COST

WARM WEATHER DRIVING

Calls For More Oil and Grease.

Take advantage of our free crankcase service and complete chassis lubrication facilities. You will then feel free to drive anywhere, knowing that every moving part of your car is protected with fresh oil and grease—not the ordinary kind, but with

TEXACO

Heasty & George

Corner Adams and Second

MANY DEATHS BY AUTO ACCIDENTS

529 Die in 77 Large Cities of United States in One Weeks Time

Number of 1925 to May 21, 1927. The department of commerce announces that during the four weeks ending May 21, 1927, automobile accidents were responsible for 529 deaths in 77 large cities of the United States. This number compares with 493 deaths during the four weeks ending May 25, 1926. Most of these deaths were the result of accidents which occurred within the corporate limits of the city, although some accidents occurred outside of the city limits.

For comparison, the number of deaths due to automobile accidents within city limits is desirable. Such figures are available for the same four-week periods for 52 cities. The four-week figures for 1927 being 220 as contrasted with 306 for the corresponding four weeks in 1926.

Table showing four-week totals of deaths from automobile accidents for various dates from May 21, 1927, to May 29, 1925.

For the 52-week period ending May 21, 1927, and May 22, 1926, the respective totals for the four-week period ending November 5, 1926. The numbers in the 27 periods of four weeks were as follows:

ward directed from Boston Point, N. Y., through Syracuse, N. Y., Saratoga, Va., Lexington, Va., Winchester, Tenn., Birmingham, Ala., and Meridian and Hattiesburg, Miss. Route No. 11 runs from Great Bear, Tex., Miss., and thence to New Orleans and through Texas to El Paso, and thence over Route No. 59 westward to San Diego, Calif.

The tourist whose journeyings are to take him into the Mississippi valley area will have to take into account the ravages of the flood on the through routes. He will do well to make careful inquiry as to the latest road reports before planning his travels in certain directions.

ROADS TO LAKES OPEN TO TRAFFIC

East and Elk Lakes Open to Autoists; Fishing Prospects Good

ELK, Ore., June 18.—With East and Elk lakes open to autoists and the snow line gradually receding into the high country, fishing prospects are the best since the start of the season.

Research Finds Wider Highways Much Needed

The American Research foundation finds that it is becoming a pressing necessity to widen the arterial highways, especially near cities.

WILL CONDUCT SURVEY George O. Brandenburg, secretary-manager of the Oregon State Motor association and Ray Conway of the same organization will conduct a survey of existing conditions over the John Day highway, leaving Ontario and returning by way of the Old Oregon Trail.

REPEALS TOURING BUREAU The Oregon State Motor association has repealed its touring bureau as requested for the summer season. This touring bureau will again be under the direction of Mrs. Martha Payne who has conducted this bureau for the past several years.

Deaths or injuries were reported from 75 of the 77 cities reported. In these 75 cities in this four-week period, the total number of automobile fatalities was 519, but only 450 of these were due to accidents within city limits.

Large advertisement for Oldsmobile cars, featuring the slogan 'LASTING SATISFACTION' and an image of a car. Text describes the car's features and availability at Oldsmobile Sales Co.

Large advertisement for Buick cars, featuring the slogan 'Everything a motor car can offer' and an image of a Buick car. Text describes the car's beauty, performance, comfort, economy, and value.